

# MEMO



DATE: May 17, 2023  
TO: Design Manual Holders  
FROM: Debbie Tanking, P.E., Chief DDT  
Bureau of Road Design  
SUBJECT: *Drainage Design Manual*  
(January 2023 Edition)

Eisenhower State Office Building  
700 S.W. Harrison Street  
Topeka, KS 66603-3745  
kdot#publicinfo@ks.gov  
<http://www.ksdot.org>

---

This is the formal issuance of the Kansas Department of Transportation's (KDOT) *Drainage Design Manual*, January 2023 Edition, which supersedes the previous version of the *Design Manual* (Part C). The manual is now web based and can be found at <https://www.ksdot.gov/bureaus/burRoadDesign/toc.asp>

Please begin using the January 2023 Edition for all KDOT projects to be field checked after May 1, 2023. If there are plan revisions that are necessitated by implementation of the release of the *Drainage Design Manual*, which would substantially impact a project schedule or cost, please contact the Bureau of Road Design before proceeding.

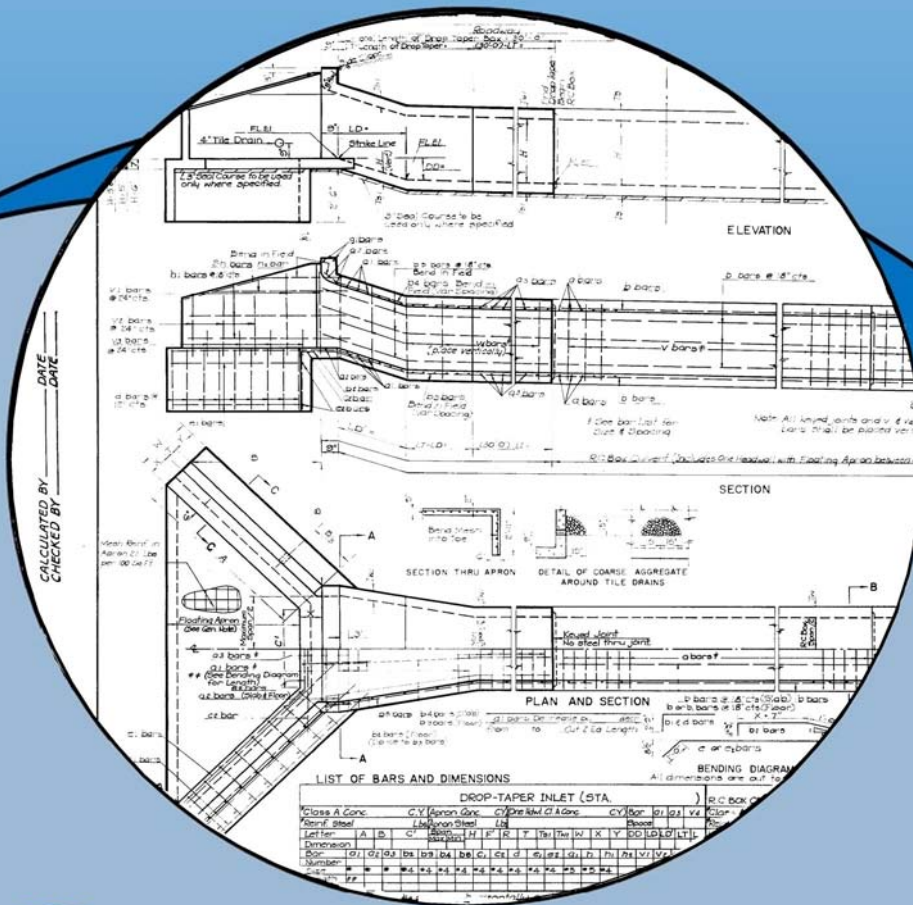
If you have any questions, please contact Steven Cross at (785) 221-6441.

By e-mail: Federal Highway Administration  
Director of Engineering and Design  
District Engineers  
Division of Program and Project Management, Attn: Kris Norton  
Office of Chief Counsel  
Chief, Bureau of Right of Way  
Chief, Bureau of Traffic Engineering  
Chief, Bureau of Transportation Planning  
Chief, Bureau of Research, Attn: Marie Manthe  
Chief, Bureau of Local Projects  
Chief, Bureau of Structures and Geotechnical Services  
Chief, Bureau of Transportation Safety  
Chief, Bureau of Intelligent Transportation Systems  
Bureau of Construction & Materials  
Road Design Leaders  
Road Squad Leaders

# Bureau of Road Design

# Drainage Design Manual

January, 2023 Edition



**Contact Information:**

Questions and comments concerning this manual should be directed to:

**Steven Cross, P.E.**

Road Design Leader

700 S.W. Harrison Street

Eisenhower State Office Building – 11<sup>th</sup> Floor

Topeka, Kansas 66603-3754

Phone (785) 296-3901

E-mail: [steven.cross@ks.gov](mailto:steven.cross@ks.gov)

## **DISCLAIMER**

**Disclaimer:** This website and documents are provided for use by persons outside of the Kansas Department of Transportation as information only. The Kansas Department of Transportation, the State of Kansas, and its officers or employees, by making this website and documents available for use by persons outside of KDOT, do not undertake any duties or responsibilities of any person or entity who chooses to use this website and documents. This website and documents should not be substituted for the exercise of a person's own professional judgment nor the determination by contractors of the appropriate manner and method of construction on projects under their control. It is the user's obligation to make sure that he/she uses the appropriate practices. Any person using this website and documents agrees that KDOT will not be liable for any commercial loss; inconvenience; loss of use, time, data, goodwill, revenues, profits, or savings; or any other special, incidental, indirect, or consequential damages in any way related to or arising from use of this website and documents.

**(This Page Intentionally Left Blank)**

## **EXECUTIVE SUMMARY**

The policies, procedures, and design criteria contained in this manual are applicable to the design of state highways by the KDOT Division of Engineering and Design and its consultants. It may also be used by districts, as appropriate, on projects for which they prepare plans. It is not intended to be applicable to 1R projects. Local units of government may adopt all or any part of this manual as they deem appropriate or as required by contract with KDOT on projects with state or federal funding.

## **KANSAS DEPARTMENT OF TRANSPORTATION ORGANIZATION**

KDOT is a multi-modal transportation agency, with its primary objective being the planning, design, construction, and maintenance of Kansas highways. The Bureau of Road Design plays an essential role in achieving that objective. Nevertheless, it must be recognized that the citizens of the state of Kansas possess ultimate authority over the Department of Transportation.

**(This Page Intentionally Left Blank)**