

ROADS AND ROADWAY FEATURES

- Controlled Access (With Interchange) - Interstate
- Kansas Turnpike (KTA) (With Interchange)
- US Route - Controlled Access (With Interchange)
- US Route - Divided
- US Route - Undivided
- State Route - Controlled Access (With Interchange)
- State Route - Divided
- State Route - Undivided
- RS Route - Divided
- RS Route - Paved
- RS Route - Unpaved
- Side Road or Street in Unincorporated Area
- Minor Road - Paved
- Minor Road - Stone or Gravel
- Minor Road - Soil
- Side Road or Street in Unincorporated Area

ROAD SYSTEM DESIGNATION

- Rural Secondary System
- County Road System

RAILROADS

- Grade Crossing
- Railroad Above
- Railroad Below

AIRWAYS AND AIRPORTS

- Military Field (Some Facilities Available)
- Airfield (Limited Facilities)
- Airway Light Beacon (General)
- Airport (Complete Facilities) (Commercial or Municipal)

DRAINAGE

- Major River
- River
- Major Drainage
- Minor Drainage
- Irrigation Ditch or Canal
- Lake Subject to Flood, Overflow Land
- Lake, Reservoir, or Pond (With Dam)

BRIDGES

- Bridges (Total Span Greater than 20 Feet)
- Open to Traffic
- Closed to Traffic

MISCELLANEOUS

- Roundabout
- Bike and Walking Trail
- Levee or Dike
- Natural or Concrete Ford
- Gate Across Any Road (Any Type)

BOUNDARIES

- State
- County
- City Limits
- Section Lines
- Boundary to Mark Eminent Domain
- Parks and Other Reservations National, State, County or Municipal Park, Indian Reservation, National Monument, Federal Development Project
- Urban Boundary

CONSERVATION AND RECREATION

- Public Recreation
- Scenic, Tourist, or Historical Site
- Trailer Park
- Hotel or Motel
- Camp or Lodge (Permanent Site with Building)
- Small Park (SP - State Park, CP - County Park, MP - Municipal Park, SR - Safety Rest Area)
- Fish Hatchery
- Game Farm
- Game Preserve or Bird Sanctuary
- Rifle Club (Public)
- Golf Course or Country Club
- Riding Academy, Saddle Club, or Stables
- Rock Course or Speedway
- Marina
- Rodeo Grounds
- Fair Grounds

FARM UNITS, DWELLINGS, ETC.

- Dwelling
- Multi Dwelling
- Church or Other Religious Institution
- Cemetery
- Church with Cemetery
- Rest Home
- Hospital
- State Port of Entry or Weigh Station
- Group of Mixed Cultural Features Closely Spaced

INDUSTRIAL

- Store or Small Business Establishment
- Oil or Gas Well(s)
- Storage Tank(s) (Gas or Oil)
- Pumping or Gauging Station
- Orchard or Tree Farm
- Grain Elevator
- Stock Yard - Loading Pen or Corral
- Quarry
- Feed Lot

EDUCATIONAL AND CORRECTIONAL INSTITUTION

- Schoolhouse
- Grange, Townhall, or Community Center
- K.S.U. Agricultural Research Center
- Correctional Institution
- Museum (General)

PUBLIC SERVICE FACILITIES

- Post Office
- Road Maintenance Shop
- Fire Station
- Landfill
- Sewage Disposal Plant
- Salvage Yard
- Power Plant
- Power Substation
- Water Tower
- Water Treatment Plant
- Wind Farm
- Radio Station (With Call Letters)
- U.S. Corps of Engineers Office

NATURAL FEATURES

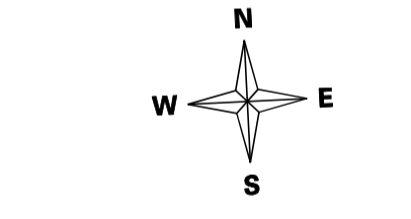
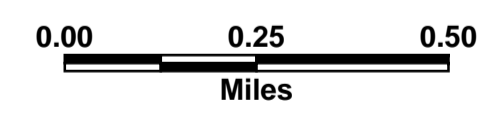
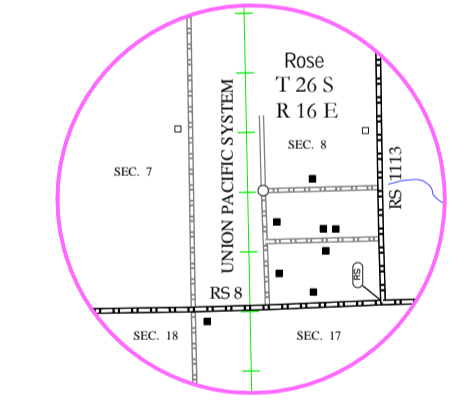
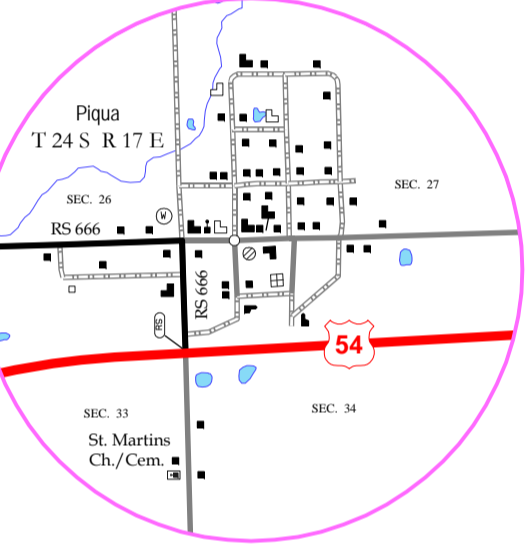
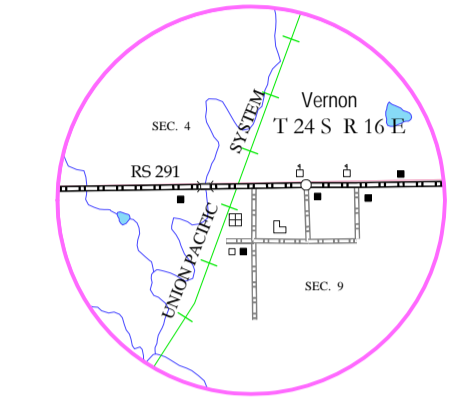
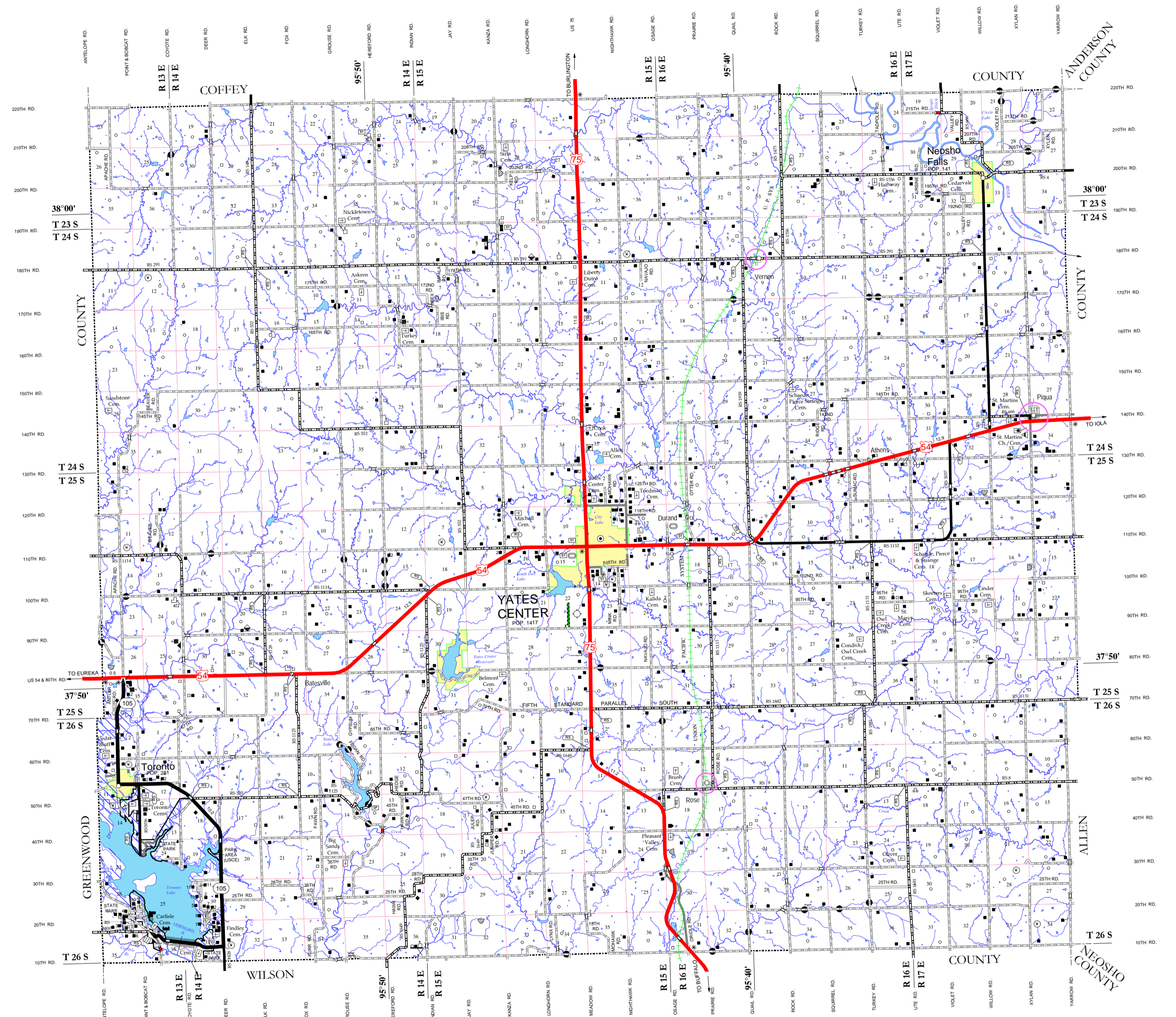
- Prominent Elevation - With Name (Numerals Indicate Elevation Above Sea Level)

MILITARY

- Fort, Army Camp, Barracks, or Other Military Post

CITIES OR NAMED PLACES

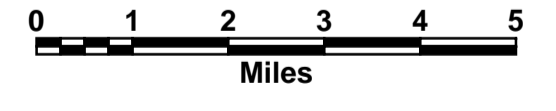
- State Capital
- County Seat
- Populated Places
- Locale
- Incorporated City



**GENERAL HIGHWAY MAP
WOODSON COUNTY
KANSAS**

PREPARED BY THE

**KANSAS DEPARTMENT OF TRANSPORTATION
BUREAU OF TRANSPORTATION PLANNING
IN COOPERATION WITH
U.S. DEPARTMENT OF TRANSPORTATION
FEDERAL HIGHWAY ADMINISTRATION**



DECEMBER 2011

LAMBERT CONFORMAL CONIC PROJECTION

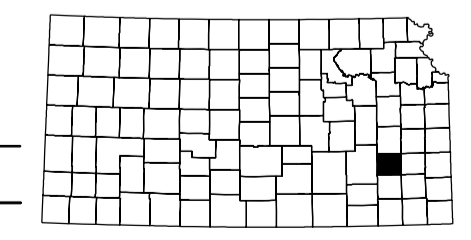
POPULATION - 2000 U.S. CENSUS
JULY 1, 2011 ESTIMATES AS
CERTIFIED TO THE SECRETARY OF STATE
BY DIVISION OF THE BUDGET JULY 1, 2011

REINVENTORY COMPLETED 8-26-2011

RURAL SECONDARY SYSTEMS REVISED TO 8-26-2011

STATE BRIDGE DATA REVISED TO 1-22-2010

NON-SYS BRIDGE DATA REVISED TO 10-8-2008



KDOT makes no warranties, guarantees, or representations for accuracy of this information and assumes no liability for errors or omissions.

COMPUTER GENERATED