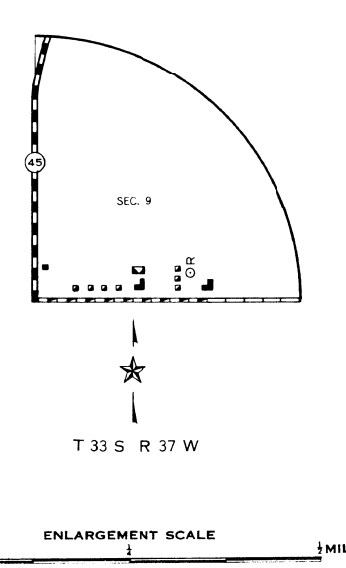


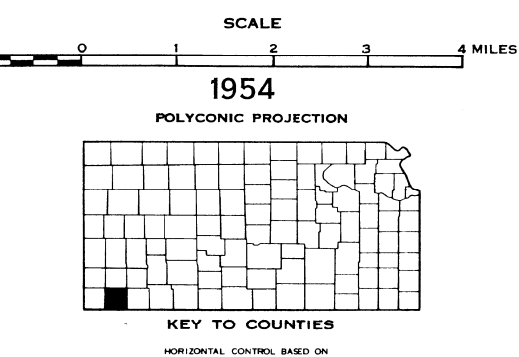
**LEGEND**

- |  |   |
|--|---|
| <p><b>ROADS AND ROADWAY FEATURES</b></p> <ul style="list-style-type: none"> <li>PRIMITIVE ROAD (TYPE A)</li> <li>UNIMPROVED ROAD (TYPE B)</li> <li>GRADED AND DRAINED ROAD (TYPE C)</li> <li>SOIL SURFACED ROAD (TYPE D)</li> <li>GRAVEL OR STONE ROAD</li> <li>NOT GRADED OR DRAINED</li> <li>GRAVEL OR STONE ROAD</li> <li>GRADED AND DRAINED WITH STABILIZED SURFACE (TYPE E)</li> <li>BITUMINOUS ROAD-LOW TYPE (TYPE F)</li> <li>PAVED ROAD (TYPE G)</li> <li>DIVIDED HIGHWAY</li> <li>SEE ROADS AND STREETS IN UNINCORPORATED URBAN COMPACTS AND EXTENSIONS OF LOCAL ROADS WITHIN MUNICIPALITIES</li> <li>4 LANE UNDIVIDED HIGHWAY</li> <li>PRIVATE ROAD</li> <li>PROJECTED ROAD</li> </ul> <p><b>ROAD SYSTEM DESIGNATION</b></p> <ul style="list-style-type: none"> <li>FEDERAL-AID PRIMARY HIGHWAY SYSTEM</li> <li>FEDERAL-AID SECONDARY HIGHWAY SYSTEM</li> <li>FEDERAL-AID URBAN HIGHWAY SYSTEM</li> <li>STATE-AID ROAD</li> </ul> <p>POINTS BETWEEN WHICH DISTANCES ARE MEASURED INDICATED THUS</p> <ul style="list-style-type: none"> <li>TRAFFIC CIRCLE</li> <li>CLOVER LEAF</li> <li>U.S. NUMBERED HIGHWAY</li> <li>STATE HIGHWAY SYSTEM OR STATE NUMBERED HIGHWAY</li> <li>END OF DESIGNATED SYSTEM OR MARKED ROUTE</li> </ul> <p><b>RAILROADS</b></p> <ul style="list-style-type: none"> <li>RAILROAD</li> <li>RAILROAD CROSSING</li> <li>RAILROAD STATION</li> <li>RAILROAD ABOVE</li> <li>RAILROAD BELOW</li> <li>RAILROAD BRIDGE</li> <li>RAILROADS ON STREETS OR ROADS</li> <li>STANDARD GAUGE RAILROAD</li> <li>ELECTRIC RAILROAD</li> </ul> <p><b>AIRWAYS AND AIRPORTS</b></p> <ul style="list-style-type: none"> <li>AIR ROUTE</li> <li>MILITARY FIELD</li> <li>AIRPORT, COMPLETE FACILITIES (COMMERCIAL OR MUNICIPAL)</li> <li>AIRFIELD, LIMITED FACILITIES</li> <li>LANDING AREA OR STRIP (INCLUDING MILITARY AIRFIELD)</li> <li>AIRWAY LIGHT BEACON, GENERAL</li> <li>AIRPORT, GENERAL</li> </ul> <p><b>NAVIGATION</b></p> <ul style="list-style-type: none"> <li>NAVIGABLE STREAM (NOT CONNECTED WITH OTHER NAVIGATION)</li> <li>DRAINAGE</li> <li>INTERMITTENT STREAM</li> <li>PERMANENT STREAM</li> <li>NARROW STREAM</li> <li>WIDE STREAM</li> <li>DRAINAGE DITCH</li> <li>IRRIGATION DITCH</li> <li>LAKE, RESERVOIR OR POND</li> <li>LAKE, RESERVOIR OR POND WITH DAM</li> <li>DRY LAKE SUBJECT TO FLOOD</li> <li>MARSH OR SWAMP LAND</li> <li>OVERFLOW LAND</li> </ul> <p><b>STRUCTURES</b></p> <ul style="list-style-type: none"> <li>HIGHWAY BRIDGE</li> <li>GENERAL</li> <li>SMALL BRIDGES CLOSELY SPACED</li> <li>BRIDGES FOR LONG RIVER CROSSINGS</li> <li>GENERAL</li> <li>ARCH</li> <li>TRUSS OR GIRDER</li> <li>CANTILEVER BRIDGE</li> <li>COVERED BRIDGE</li> <li>HIGHWAY GRADE SEPARATION</li> <li>MISCELLANEOUS STRUCTURES</li> <li>DAM WITH ROAD</li> <li>LEVEE OR DIKE WITH ROAD</li> <li>CONCRETE FORD OR DIP</li> <li>FORD-ROAD ESTABLISHED</li> <li>CATTLE GUARD</li> <li>GATE, ACROSS ROAD (ANY TYPE)</li> </ul> <p><b>BOUNDARIES</b></p> <ul style="list-style-type: none"> <li>STATE</li> <li>CORPORATE LINES</li> <li>BOUNDARY LINES ESTABLISHED FOR DELIMITED URBAN PLACES</li> <li>SECTION LINE</li> <li>WATCH LINE BETWEEN ADJOINING SHEETS OF SAME COUNTY</li> <li>BOUNDARY TO MARK ENLARGEMENT INSET</li> <li>PARKS AND OTHER RESERVATIONS NATIONAL</li> <li>STATE, COUNTY OR MUNICIPAL PARK</li> <li>INDIAN RESERVATION, NATIONAL MONUMENT, FEDERAL DEVELOPMENT PROJECT</li> <li>MONUMENT-SMALL HISTORIC SITE</li> </ul> <p><b>CITY AND VILLAGE CENTERS</b></p> <ul style="list-style-type: none"> <li>STATE CAPITAL</li> <li>COUNTY SEAT</li> <li>OTHER CITIES AND VILLAGES</li> <li>INCORPORATED CITY OR VILLAGE</li> <li>BOUNDARY LIMITS FIXED FOR SPECIAL TAXING AREAS AND OTHER UNINCORPORATED URBAN PLACES DELIMITED</li> </ul> | <p><b>CONSERVATION AND RECREATION</b></p> <ul style="list-style-type: none"> <li>PICNIC GROUND</li> <li>PLAYGROUND, BALL FIELD, ETC.</li> <li>BATHING BEACH OR SWIMMING POOL</li> <li>SCENIC SITE</li> <li>CAMP SITE, NO PERFORMANCE TENT OR TRAILER PARKING</li> <li>TOURIST COURT OR MOTEL</li> <li>CAMP OR LODGE (PERMANENT SITE WITH BUILDINGS)</li> <li>SMALL PARK (PERMANENT SITE WITH BUILDINGS)</li> <li>FISH HATCHERY</li> <li>BIRD SANCTUARY</li> <li>GAME FARM</li> <li>GAME PRESERVE</li> <li>RIFLE CLUB</li> <li>GOLF GROUND OR COUNTRY CLUB</li> <li>POLO GROUNDS</li> <li>RIDING ACADEMY</li> <li>YACHT CLUB</li> <li>AMUSEMENT PARK OR HALL</li> <li>FAIR GROUND, RACE COURSE, SPEEDWAY</li> <li>DRIVE-IN THEATRE</li> </ul> <p><b>FARM UNITS, DWELLINGS, ETC.</b></p> <ul style="list-style-type: none"> <li>FARM UNIT</li> <li>DWELLING (OTHER THAN FARM)</li> <li>MOVIE OR GROUPS OF DWELLINGS CLOSELY SPACED (INDICATES NUMBER OF DWELLINGS)</li> <li>COMBINED DWELLING AND STORE</li> <li>DWELLING AND POST OFFICE</li> <li>DWELLING AND FILLING STATION</li> <li>DWELLING, BUSINESS AND FILLING STATION</li> <li>TENANT HOUSE</li> <li>SEASONAL OR SUMMER COLONY DWELLING</li> <li>HOTEL (INDICATES NUMBER OF ROOMS)</li> <li>CHURCH OR OTHER RELIGIOUS INSTITUTION</li> <li>CHURCH AND SCHOOL</li> <li>CEMETERY</li> <li>CHURCH WITH CEMETERY ADJACENT</li> <li>FRESH AIR FARM OR REST HOME</li> <li>HOSPITAL</li> <li>WELL</li> <li>STATE PORT OF ENTRY OR WEIGHT STATION</li> <li>GROUP OF MIXED CULTURAL FEATURES CLOSELY SPACED (INDICATES NUMBER OF DWELLINGS, BUSINESS, AND FILLING STATIONS)</li> </ul> <p><b>INDUSTRIAL</b></p> <ul style="list-style-type: none"> <li>STORE OR SMALL BUSINESS ESTABLISHMENT</li> <li>BUSINESS AND POST OFFICE</li> <li>BUSINESS, FILLING STATION, AND POST OFFICE</li> <li>FACTORY OR INDUSTRIAL PLANT</li> <li>MINE-SHAFT OR DRIFT (INDICATES DEPTH)</li> <li>OIL OR GAS WELL</li> <li>OIL OR GAS FIELD</li> <li>OIL TANK</li> <li>GAS TANK</li> <li>GROUP OF STORAGE TANKS (OIL OR GAS)</li> <li>FILLING STATION, NOT CONNECTED WITH OTHER BUSINESS</li> <li>PUMPING STATION (OIL OR GAS)</li> <li>GAUGING OR PUMPING STATION (GENERAL)</li> <li>VALVE HOUSE</li> <li>SEASONAL INDUSTRY (CANNERY OR SMALL GRAIN MILL)</li> <li>MILK DEPOT, CREAMERY OR CHEESE FACTORY</li> <li>FRUIT OR NUT ORCHARD</li> <li>FRUIT OR PRODUCE PACKING HOUSE</li> <li>ROAD STAND, FARM PRODUCTS SALES</li> <li>WAREHOUSE-GENERAL (INDICATES NUMBER OF BAYS)</li> <li>GRAIN ELEVATOR</li> <li>C. C. C. STORAGE BINS</li> <li>DRENHOUSE</li> <li>NURSERY</li> <li>STOCK YARD-LOADING PEN OR CORRAL</li> <li>STOCK PEN AT RAILROAD SIDING</li> <li>GRAVEL PIT</li> <li>QUARRY</li> <li>KILN OR OVEN (LIME, CLAY PRODUCTS, COKE, ETC.)</li> </ul> <p><b>EDUCATIONAL AND CORRECTIONAL INSTITUTIONS</b></p> <ul style="list-style-type: none"> <li>SCHOOLHOUSE</li> <li>CONSOLIDATED OR LARGE SCHOOL</li> <li>TOWNHALL, GRANGE, OR COMMUNITY HALL</li> <li>AGRICULTURAL EXPERIMENT STATION</li> <li>COUNTY FARM</li> <li>CORRECTIONAL INSTITUTION</li> </ul> <p><b>PUBLIC SERVICE FACILITIES</b></p> <ul style="list-style-type: none"> <li>POST OFFICE</li> <li>HIGHWAY GARAGE</li> <li>FIRE ENGINE HOUSE</li> <li>GARAGE OR RUBBISH DUMP</li> <li>SEWAGE DISPOSAL PLANT</li> <li>WATER SUPPLY STAND PIPE OR TANK</li> <li>PIPE LINE, GAS</li> <li>PIPE LINE, OIL</li> <li>PIPE LINE, PRODUCTS</li> <li>TRANSMISSION LINE (WITH TRANSFORMER STATIONS)</li> <li>POWER PLANT</li> <li>POWER SUBSTATION</li> <li>BOOSTER STATION</li> <li>UNDERGROUND TELEPHONE OR RADIO CABLE</li> <li>RADIO STATION, WITH FULL EQUIPMENT</li> <li>RADIO RANGE STATION</li> </ul> <p><b>MISCELLANEOUS</b></p> <ul style="list-style-type: none"> <li>FORT, ARMY CAMP, BARRACKS, OR OTHER MILITARY POST</li> <li>TRANSLATION STATION</li> <li>BENCH MARK (WITH ELEVATION)</li> <li>NATURAL FEATURES</li> <li>PROMINENT ELEVATION, WITH NAME</li> <li>SINK OR DEPRESSION</li> </ul> |
|--|---|



**GENERAL HIGHWAY MAP  
STEVENS COUNTY  
KANSAS**

PREPARED BY THE  
STATE HIGHWAY COMMISSION OF KANSAS  
HIGHWAY PLANNING DEPARTMENT  
IN COOPERATION WITH THE  
U. S. DEPARTMENT OF COMMERCE  
BUREAU OF PUBLIC ROADS



1954  
POLYCONIC PROJECTION

KEY TO COUNTIES