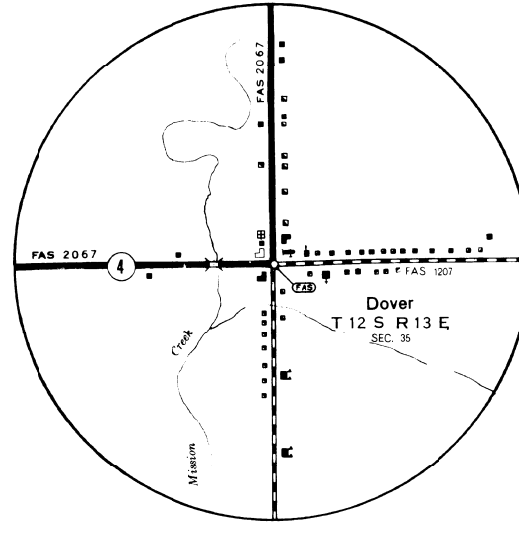
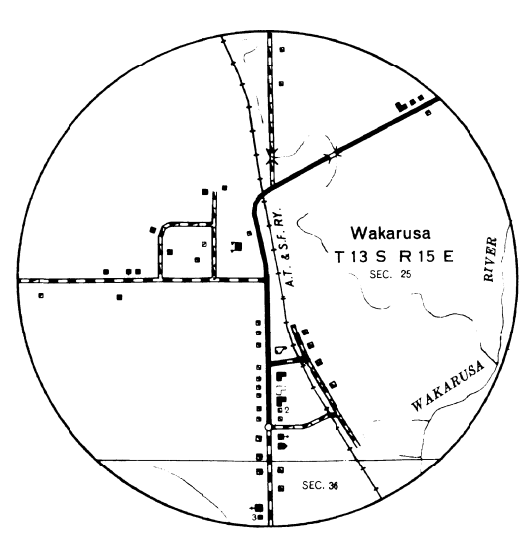
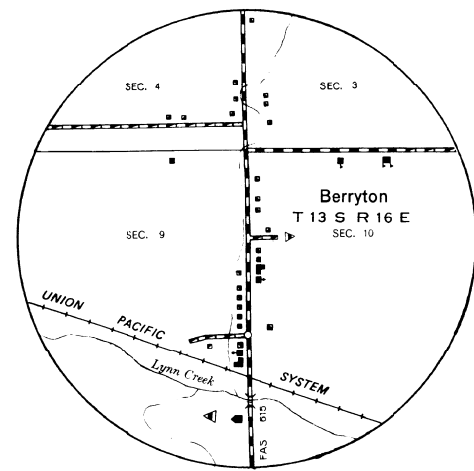
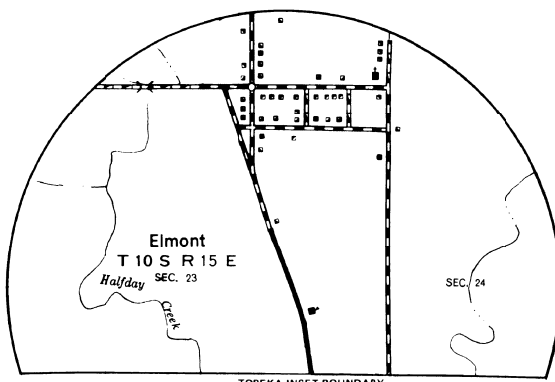
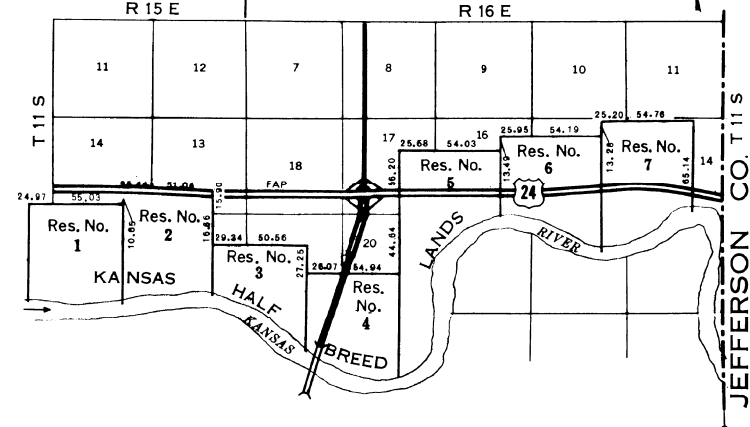
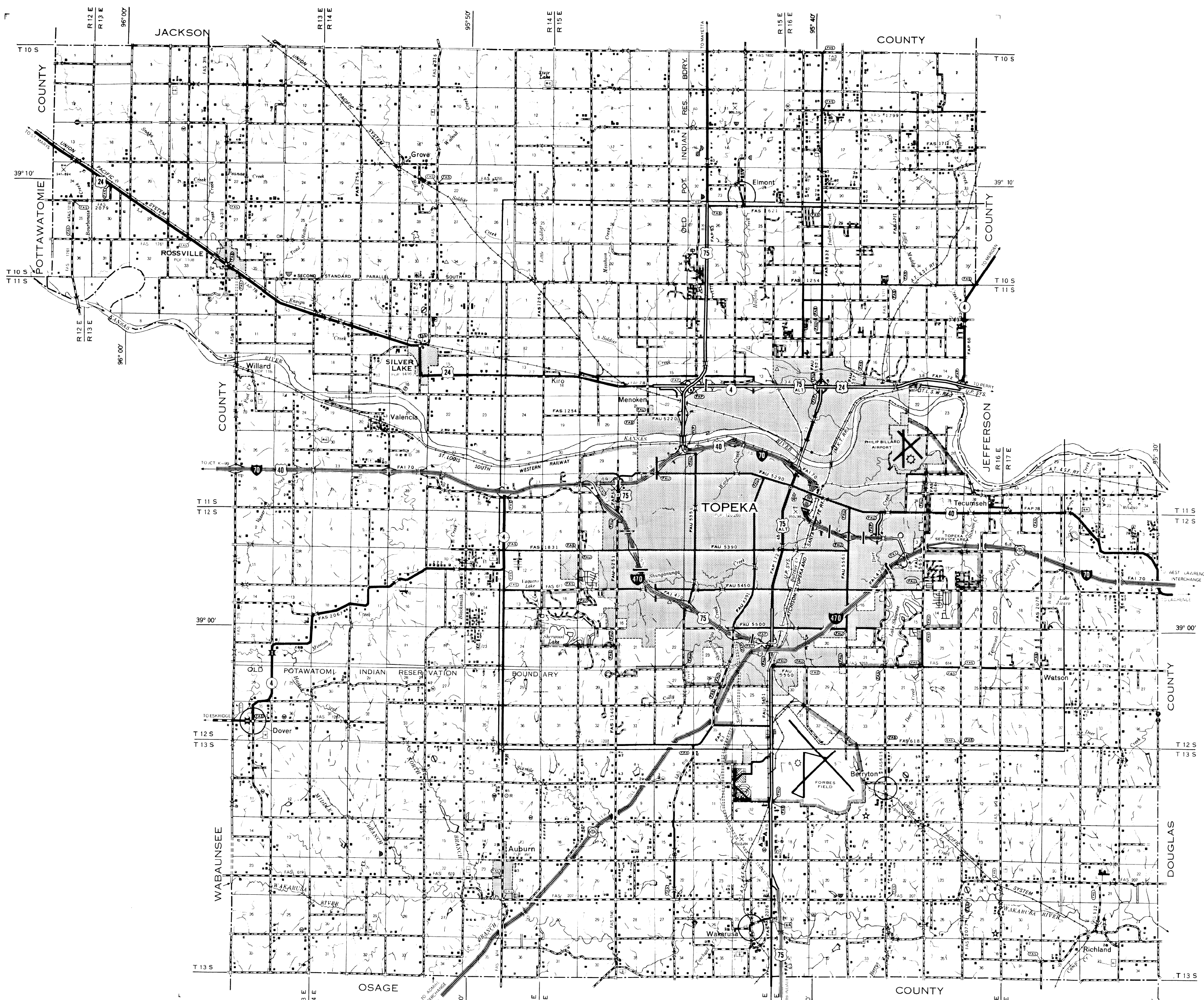


**DETAIL OF KANSAS HALF BREED LANDS
ADJACENT TO NORTH TOPEKA**
MEASUREMENTS PERTAINING TO
RESERVES SHOWN IN CHAINS



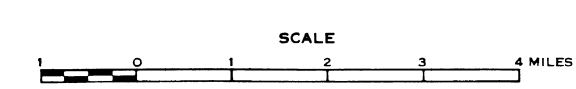
LEGEND

- | | |
|--|---|
| ROADS AND ROADWAY FEATURES | CONSERVATION AND RECREATION |
| <ul style="list-style-type: none"> Unimproved Road (Type A) Graded and Drained Road (Type C) Soil Surfaced Road (Type D) Gravel or Stone Road Not Graded or Drained (Type E-1) Graded and Drained (Type E-2) Gravel or Stone Road With Stabilized Surface (Type E-3) Blumhouse Road—Low Type (Type F, G-1, H-1) Paved Road (Type G-2, H-2, J, K, L) Divided Highway Highway With Full Control of Access Side Roads and Shoulders in Unincorporated Urban Components and Extensions of Local Roads Within Municipalities 4 Lane Unimproved Highway Projected Road | <ul style="list-style-type: none"> Picnic Ground Playground, Ball Field, Etc. Bathing Beach or Swimming Pool Some Site Camp Site, No Permanent (Tents or Trailer Parking) Tourist Court or Motel (Figure Indicates Number of Permanent Cabins or Cottages) Camp or Lodge (Permanent Site With Building) Small Park (SP State, CP County, MP Municipal, SR Safety Rest Area) Fish Hatchery Best Sanctuary Game Farm Game Preserve Rifle Club Golf Course or Country Club Riding Academy Yacht Club Amusement Park or Hall Fair Ground, Race Course, Speedway Drome or Theatre Martini Rooftop Grounds Guide House or Gate House (Add Letters N or S to Indicate National or State Stars) |
| Road System Designation | FARM UNITS, DWELLINGS, ETC. |
| <ul style="list-style-type: none"> Federal-Aid Interstate Highway System Federal-Aid Primary Highway System Federal-Aid Secondary Highway System Federal-Aid Urban Highway System Points Between Which Distances are Measured Interstate Numbered Highway U.S. Numbered Highway State Highway System or State Numbered Highway End of Designated System or Marked Route | <ul style="list-style-type: none"> Farm Unit Dwelling (Other Than Farm) Row or Group of Dwellings Closely Spaced (Figure Denotes Number of Dwellings) Combined Dwelling and Store Dwelling and Post Office Dwelling and Filing Station Dwelling, Business, and Filing Station Tenant House Seasonal or Summer Colony Dwelling Hotel, Inn Nursing Home Church or Other Religious Institution Church and School (Joint Use) Cemetery Church With Cemetery Adjacent Fresh Air Farm or Rest Home Hospital Well State Port of Entry or Weight Station Group of Meat Cures (Features Closely Spaced (Figure above bar indicates number of dwellings included in the group; figures over individual units show number of each included regardless of order)) |
| RAILROADS | INDUSTRIAL |
| <ul style="list-style-type: none"> Railroad (Any Number of Tracks Used by a Single Operating Company or by Trains of Another Carrier Under Trackage Rights) Railroads in Jurisdiction (Two or More) Tracks of Separately Operated Companies on Adjacent Right-of-Way Abandoned Railroad (Track Retained) Railroad Station | <ul style="list-style-type: none"> Store or Small Business Establishment Business and Post Office Business, Filing Station, and Post Office Factory or Industrial Plant Mine (Shaft or Out) (Any Kind) Oil or Gas Well Oil or Gas Field Storage Tank (Gas or Oil) (Figure Denotes Number of Tanks) Filing Station (Not Connected With Other Business) Pumping Station (Oil or Gas) Gauging or Pumping Station (General) Valve House Seasonal Industry (Caney or Oil-Gram Mill) Milk Dipper, Creamery or Cheese Factory Fruit or Nut Orchard Fruit or Produce Packing House Road Stand Farm Products Sales Warehouse—General (If Government Add State or U.S.) Grain Elevator Group of Grain Storage Bins Greenhouse Nursery Stock Yard Loading Pen or Corral Stock Pen at Railroad Siding (Small) Gravel Pit Quarry Mine or Open (Lime, Clay Products, Dike, Etc.) Feed Lot Shopping Center Seasonal Business Sawmill (Sawtooth) |
| RAILROAD CROSSING | EDUCATIONAL AND CORRECTIONAL INSTITUTIONS |
| <ul style="list-style-type: none"> Grade Crossing Railroad Above Railroad Below Railroad Bridge | <ul style="list-style-type: none"> Schoolhouse Consolidated or Large School Township, Grange, or Community Hall Agricultural Experiment Station Correctional Institution Museum—General Public Library |
| AIRWAYS AND AIRPORTS | PUBLIC SERVICE FACILITIES |
| <ul style="list-style-type: none"> Military Field (Some Facilities Available) Airport Complex Facilities (Commercial or Municipal) Airfield, Limited Facilities Landing Area or Strip (Including Private Air Fields) Airway Light Beacon, General Airport, General | <ul style="list-style-type: none"> Post Office Highway Garage Fire Engine House Garbage or Rubbish Dump Sewage Disposal Plant Auto Salvage Yard Transformer Station Power Plant Power Substation Booster Station Water Supply Stand Pipe or Tank Radio Station (With Call Letters) Radio Receiver Station Water Treatment Plant Jurisdiction U.S. Corps of Engineers Office |
| NAVIGATION | MISCELLANEOUS |
| <ul style="list-style-type: none"> Navigable Stream (N) (Instrument navigation) Intermittent Stream (Wide) Intermittent Stream (Narrow) Wide Stream Drainage Ditch Irrigation Ditch Lake, Reservoir or Pond Lake, Reservoir or Pond With Dam Dry, Lake Subject to Flood Marsh or Swamp Land Overflow Land | <ul style="list-style-type: none"> Fort, Army Camp, Barracks, or Other Military Post Transpiration Station Bench Mark (With Elevation) |
| BRIDGES FOR LONG RIVER CROSSINGS | BOUNDARIES |
| <ul style="list-style-type: none"> General Arch Truss or Girder (in wood or steel) Canterlev Bridge Highway Grade Separation | <ul style="list-style-type: none"> State County Corporate Lines Boundary Lines Established For Delimited Urban Places Section Line Boundary to Mark Entanglement Inset Park and Other Reservations National, State, County or Municipal Park, Indian Reservation, National Monument, Federal Development Project Monument—Small, Historic Site |
| MASSIVE STRUCTURES | CITY AND VILLAGE CENTERS |
| <ul style="list-style-type: none"> Levee or Dike With Road Levee or Dike (Without Road) Force Road Established Cattle Guard Gate Across Road (Any Type) | <ul style="list-style-type: none"> State Capital County Seat Other Cities and Villages Incorporated City or Village Boundary Lines Fixed for Special Taxing Areas and Other Unincorporated Urban Places Designated |
| NATURAL FEATURES <td>ENLARGEMENT SCALE</td> | ENLARGEMENT SCALE |
| <ul style="list-style-type: none"> Prominent Elevation—With Name Numbers Indicate Elevation Above Sea Level Sink or Depression | |

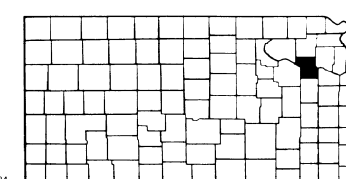


**GENERAL HIGHWAY MAP
SHAWNEE COUNTY
KANSAS**

PREPARED BY THE
KANSAS DEPARTMENT OF TRANSPORTATION
BUREAU OF TRANSPORTATION PLANNING
IN COOPERATION WITH THE
U.S. DEPARTMENT OF TRANSPORTATION
FEDERAL HIGHWAY ADMINISTRATION



1986
POLYCONIC PROJECTION



THE STATE HIGHWAY AND TRAIL MAP FOR ROAD TRAVELERS IS AVAILABLE IN THE U.S. FROM TOKYO, JAPAN

POPULATION - DIVISION OF THE BUREAU OF ECONOMIC ANALYSIS

REVISIONS COMPLETED 2-20-86
F.A. AND STATE SYSTEMS REVISED TO 5-22-86