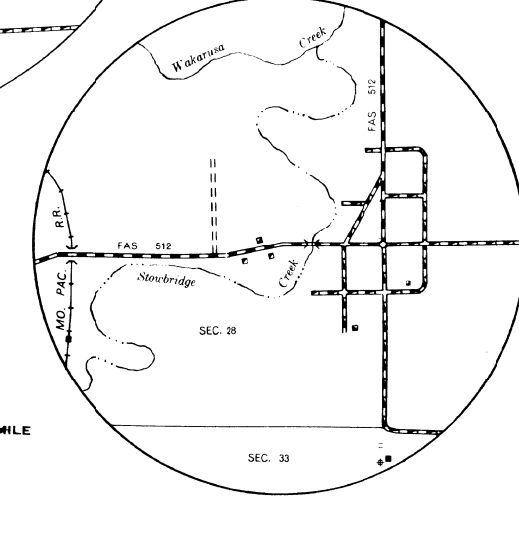
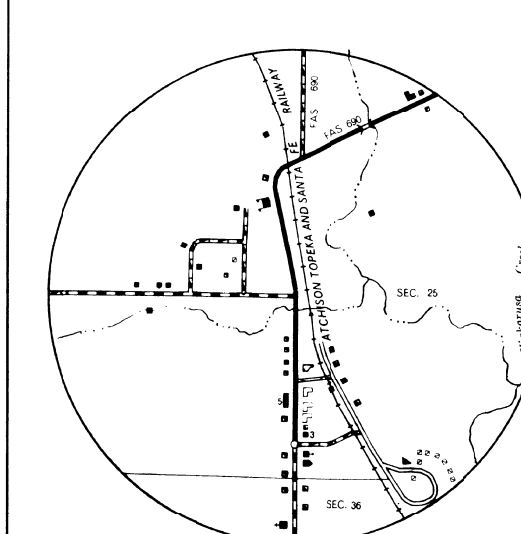
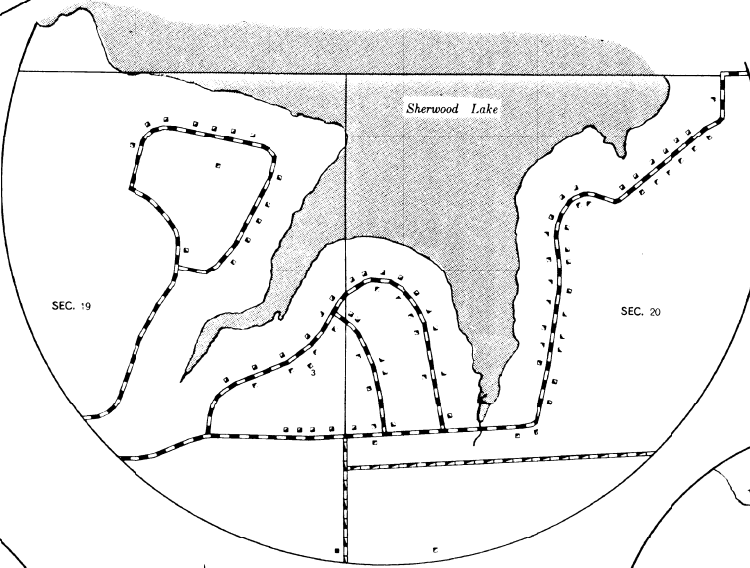
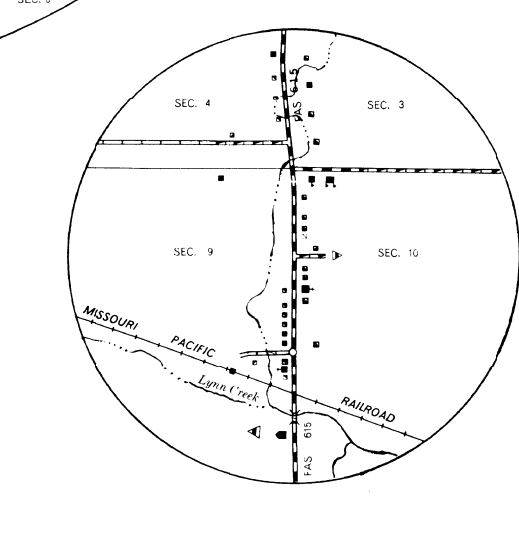
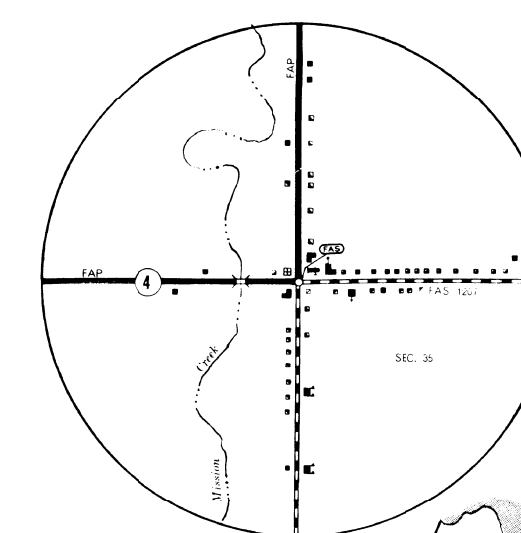
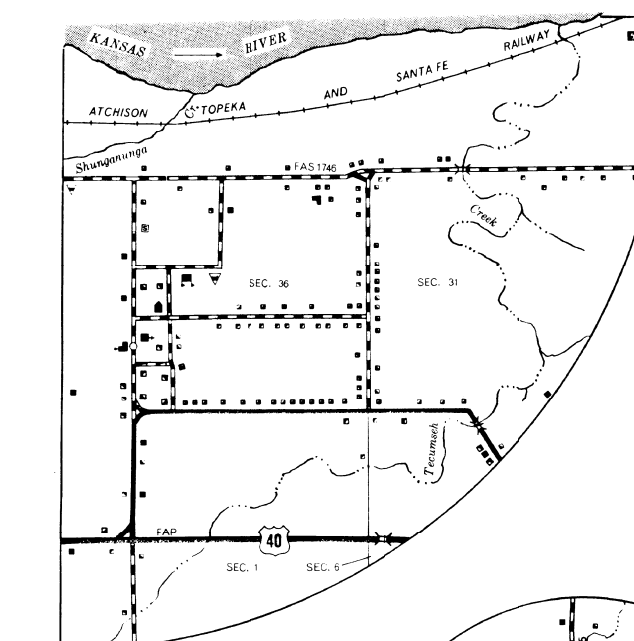
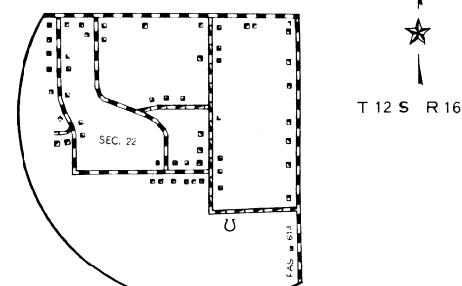
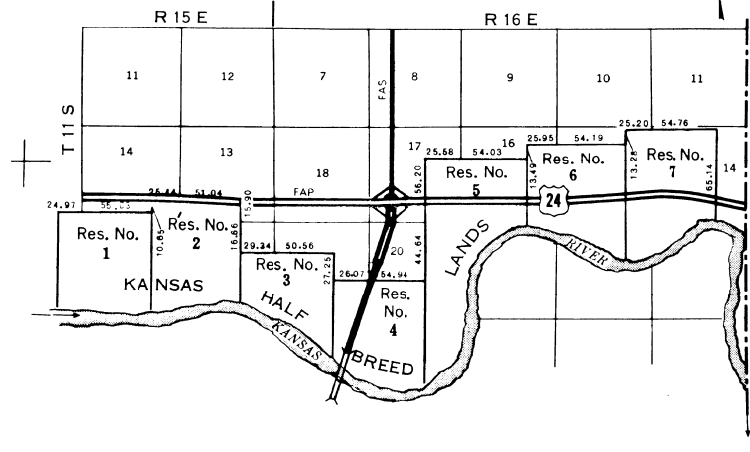


**DETAIL OF KANSAS HALF-BREED LANDS
ADJACENT TO NORTH TOPEKA**



Elmont
T10 S R15 E

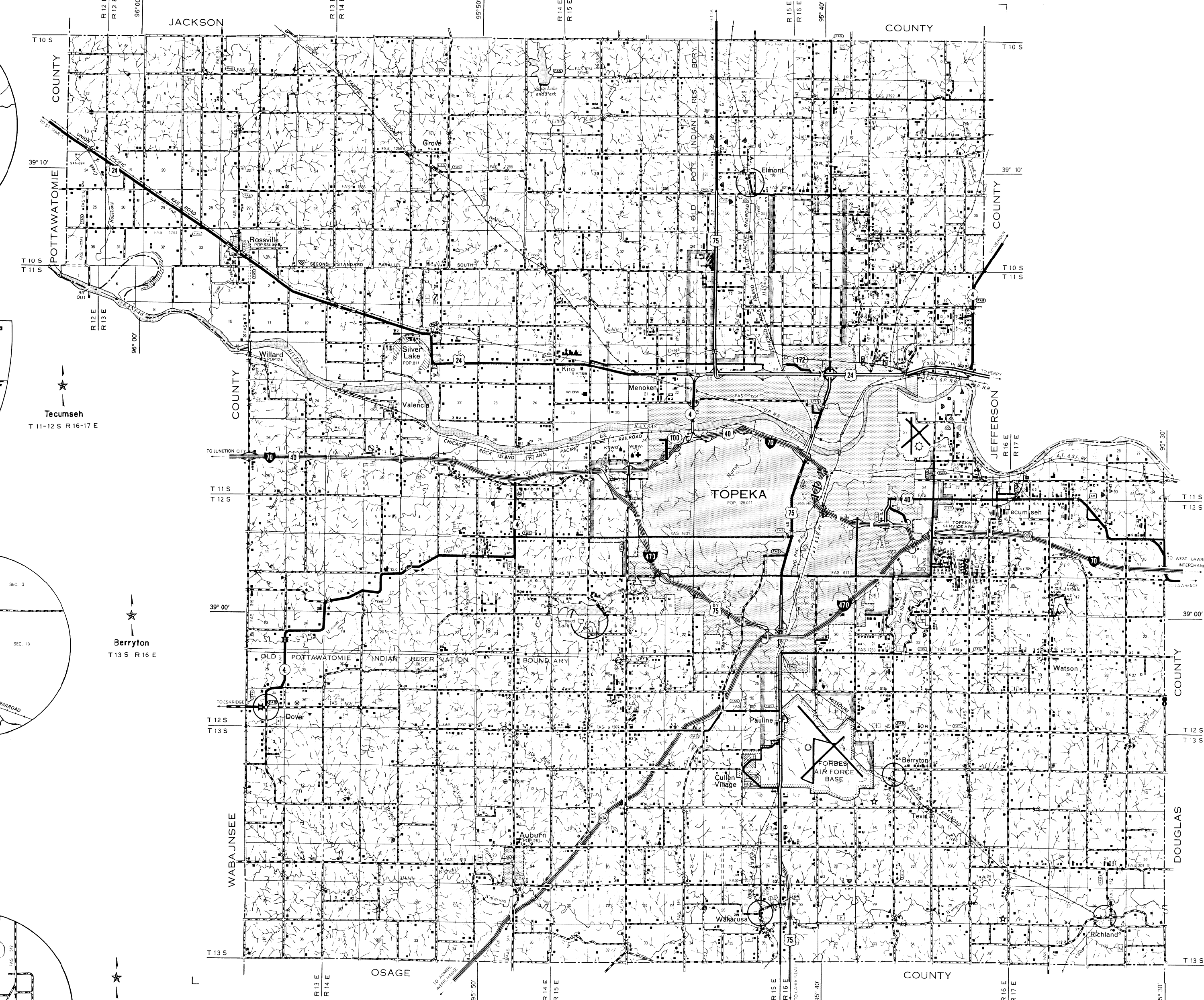
Tecumseh
T11-12 S R16-17 E

Dover
T12 S R13 E

Berryton
T13 S R16 E

Wakarusa
T13 S R15 E

Richland
T13 S R17 E



LEGEND

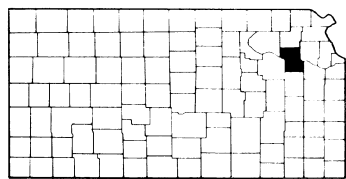
ROADS AND ROADWAY FEATURES	CONSERVATION AND RECREATION
PRIMITIVE ROAD (TYPE A)	PICNIC GROUND
UNIMPROVED ROAD (TYPE B)	PLAYGROUND, BALL FIELD, ETC.
GRADED AND DRAINED ROAD (TYPE C)	BATHING BEACH OR SWIMMING POOL
SOIL SURFACED ROAD (TYPE D)	SCENIC SITE
GRAVEL OR STONE ROAD—NOT GRADED OR DRAINED (TYPE E)	CAMP SITE, NO PERMANENCE (TRAIL OR TRAILER PARKING)
GRAVEL OR STONE ROAD—GRADED AND DRAINED (TYPE F)	TOURIST COURT OR MOTEL (CIRCLE INDICATES)
STABILIZED SURFACE (TYPE G)	CAMP OR LODGE (PERMANENT SITE WITH BUILDINGS)
PAVED ROAD—LOW TYPE (TYPE H)	SMALL PARK (OTHER THAN STATE)
DIVIDED HIGHWAY	FISH HATCHERY
HIGHWAY WITH FULL CONTROL OF ACCESS	BIRD SANCTUARY
SIDE ROADS AND STREETS IN UNINCORPORATED URBAN COMPACTS AND EXTENSIONS OF LOCAL ROADS WITHIN MUNICIPALITIES	GAME FARM
4 LANE UNDIVIDED HIGHWAY	GAME PRESERVE
PRIVATE ROAD	RIFLE CLUB
PROJECTED ROAD	GOLF GROUND OR COUNTRY CLUB
	POLO GROUNDS
	RIDING ACADEMY
	YACHT CLUB
	AMUSEMENT PARK OR HALL
	FAIR GROUND, RACE COURSE, SPEEDWAY
	DRIVE-IN THEATRE
	FARM UNITS, DWELLINGS, ETC.
	FARM UNIT
	DWELLING (OTHER THAN FARM)
	ROWS OR GROUPS OF DWELLINGS CLOSELY SPACED
	COMBINED DWELLING AND STORE
	DWELLING AND POST OFFICE
	DWELLING AND FILLING STATION
	DWELLING, BUSINESS, AND FILLING STATION
	TEENY HOUSE
	SEASONAL OR SUMMER COLONY DWELLING
	HOTEL, INN
	CHURCH OR OTHER RELIGIOUS INSTITUTION
	CHURCH AND SCHOOL (JOINT USE)
	CEMETERY
	CHURCH WITH CEMETERY ADJACENT
	FRESH AIR FARM OR REST HOME
	HOSPITAL
	WELL
	STATE PORT OF ENTRY OR WEIGHT STATION
	GROUP OF MIXED CULTURAL FEATURES CLOSELY SPACED
	INDUSTRIAL
	STORE OR SMALL BUSINESS ESTABLISHMENT
	BUSINESS AND POST OFFICE
	BUSINESS AND FILLING STATION
	BUSINESS, FILLING STATION, AND POST OFFICE
	FACTORY OR INDUSTRIAL PLANT
	MINE-SHAFT OR DRIFT (ANY KIND)
	OIL OR GAS WELL
	OIL OR GAS FIELD
	OIL TANK
	GAS TANK
	GROUP OF STORAGE TANKS (OIL OR GAS)
	FILLING STATION (NOT CONNECTED WITH OTHER BUSINESS)
	PUMPING STATION
	GAUGING OR PUMPING STATION (GENERAL)
	VALVE HOUSE
	SEASONAL INDUSTRY (CANNERY OR SMALL MEAT MILL)
	FRUIT OR NUT ORCHARD
	FRUIT OR PRODUCE PACKING HOUSE
	ROAD STAND, FARM PRODUCTS SALES
	WAREHOUSE—GENERAL (OR GOVERNMENT AND STATE OR U.S.)
	GRAIN ELEVATOR
	GROUP OF GRAIN STORAGE BINS
	GREENHOUSE
	NURSERY
	STOCK YARD—LOADING PEN OR CORRAL
	STOCK PEN AT RAILROAD SIDING (GENERAL)
	GRAVEL PIT
	QUARRY
	KILN OR OVEN (LIME, CLAY PRODUCTS, COKE, ETC.)
	EDUCATIONAL AND CORRECTIONAL INSTITUTIONS
	SCHOOLHOUSE
	CONSOLIDATED OR LARGE SCHOOL
	TOWNHALL, GRANGE, OR COMMUNITY HALL
	AGRICULTURAL EXPERIMENT STATION
	COUNTY FARM
	CORRECTIONAL INSTITUTION
	PUBLIC SERVICE FACILITIES
	POST OFFICE
	HIGHWAY GARAGE
	FIRE ENGINE HOUSE
	GARAGE OR RUBBISH DUMP
	SEWAGE DISPOSAL PLANT
	AUTO SALVAGE YARD
	TRANSFER STATION
	POWER PLANT
	POWER SUBSTATION
	BOOSTER STATION
	WATER SUPPLY, STAND PIPE, OR TANK
	RADIO STATION (WITH CALL LETTERS)
	RADIO RANGE STATION
	U.S. WEATHER STATION
	MISCELLANEOUS
	FORT, ARMY CAMP, BARRACKS, OR OTHER
	MILITARY POST
	TRIANGULATION STATION
	BENCH MARK (WITH ELEVATION)
	NATURAL FEATURES
	PROMINENT ELEVATION (WITH NAME)
	SINK OR DEPRESSION

**GENERAL HIGHWAY MAP
SHAWNEE COUNTY
KANSAS**

PREPARED BY THE
STATE HIGHWAY COMMISSION OF KANSAS
DEPARTMENT OF PLANNING AND DEVELOPMENT
IN COOPERATION WITH THE
U. S. DEPARTMENT OF TRANSPORTATION
FEDERAL HIGHWAY ADMINISTRATION

SCALE
0 1 2 3 4 MILES

1973
POLYCONIC PROJECTION



REVISIONS COMPLETED 12-2-72
P.A. AND STATE SYSTEMS REVISED TO 1-2-73