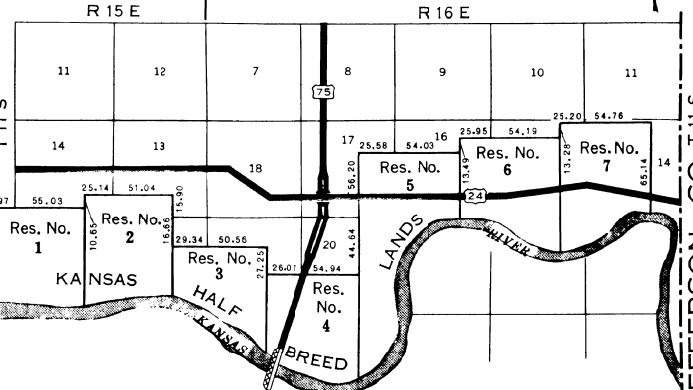


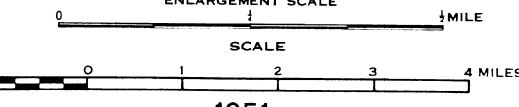
DETAIL OF KANSAS HALF BREED LANDS
ADJACENT TO NORTH TOPEKA
MEASUREMENTS PERTAINING TO
RESERVES SHOWN IN CHAINS



ROADS AND ROADWAY FEATURES		CONSERVATION AND RECREATION	
PRIMITIVE ROAD	UNIMPROVED ROAD	PICNIC GROUNDS	PLAYGROUND, BALL FIELD, ETC.
GRADED AND DRAINED ROAD	SOIL SURFACED ROAD	BATHING BEACH OR SWIMMING POOL	SCENIC SITE
GRAVEL OR STONE ROAD	NOT GRADED OR DRAINED ROAD	CAMP SITE, NO PERMANENCE ITEMS OR TRAILER PARKING	TOURIST STOP, OR MOTEL
GRAVEL OR STONE ROAD WITH STABILIZED SURFACE	BITUMINOUS ROAD	CAMP OR LODGE	SMALL PARK
PAVED ROAD	4 LANE UNDIVIDED HIGHWAY	FISH HATCHERY	BIRD SANCTUARY
SIDE ROADS AND STREETS IN UNINCORPORATED AREAS AND EXTENSIONS OF LOCAL ROADS WITHIN MUNICIPALITIES	PROJECTED ROAD	GAME PRESERVE	RIFLE CLUB
ROAD SYSTEM DESIGNATION	FEDERAL-AID PRIMARY HIGHWAY SYSTEM	GOLF GROUND OR COUNTRY CLUB	POLO GROUNDS
FEDERAL-AID SECONDARY HIGHWAY SYSTEM	FEDERAL-AID URBAN HIGHWAY SYSTEM	RIDING ACADEMY	YACHT CLUB
STATE-AID ROAD	POINTS BETWEEN WHICH DISTANCES ARE MEASURED INDICATED THUS	AMUSEMENT PARK OR HALL	FAIR GROUNDS RACE COURSE, SPEEDWAY
TRAFFIC CIRCLE	U.S. NUMBERED HIGHWAY	DRIVE-IN THEATRE	
CLOVER LEAF	STATE HIGHWAY SYSTEM OR STATE NUMBERED HIGHWAY		
END OF DESIGNATED SYSTEM OR MARKED ROUTE	RAILROADS		
RAILROADS IN JUNCTION	RAILROADS IN JUNCTION		
NARROW GAUGE RAILROAD	ELECTRIC INTERURBAN OR SUBURBAN		
ELECTRIC INTERURBAN OR SUBURBAN	ABANDONED RAILROAD (TRACK REMOVED)		
ABANDONED RAILROAD (TRACK REMOVED)	RAILROAD STATION		
RAILROAD STATION	RAILROAD CROSSINGS		
RAILROAD CROSSINGS	RAILROADS ON STREETS OR ROADS		
RAILROADS ON STREETS OR ROADS	ELECTRIC RAILROAD		
ELECTRIC RAILROAD	AIRWAYS AND AIRPORTS		
AIRWAYS AND AIRPORTS	AIR ROUTE		
AIR ROUTE	MILITARY FIELD (SEMI-FACILITIES AVAILABLE)		
MILITARY FIELD (SEMI-FACILITIES AVAILABLE)	AIRPORT, COMPLETE FACILITIES (COMMERCIAL OR MILITARY)		
AIRPORT, COMPLETE FACILITIES (COMMERCIAL OR MILITARY)	AIRFIELD, LIMITED FACILITIES		
AIRFIELD, LIMITED FACILITIES	LANDING AREA OR STRIP		
LANDING AREA OR STRIP	AIRWAY LIGHT BEACON, GENERAL		
AIRWAY LIGHT BEACON, GENERAL	AIRPORT, GENERAL		
AIRPORT, GENERAL	NAVIGATION		
NAVIGATION	NAVIGABLE STREAM		
NAVIGABLE STREAM	INTERMITTENT STREAM		
INTERMITTENT STREAM	INTERMITTENT STREAM		
INTERMITTENT STREAM	NARROW STREAM		
NARROW STREAM	WIDE STREAM		
WIDE STREAM	DRAINAGE DITCH		
DRAINAGE DITCH	IRRIGATION DITCH		
IRRIGATION DITCH	LAKE, RESERVOIR, OR POND		
LAKE, RESERVOIR, OR POND	LAKE, RESERVOIR, OR POND WITH DAM		
LAKE, RESERVOIR, OR POND WITH DAM	DRY LAKE SUBJECT TO FLOOD		
DRY LAKE SUBJECT TO FLOOD	MARSH OR SWAMP LAND		
MARSH OR SWAMP LAND	OVERFLOW LAND		
OVERFLOW LAND	STRUCTURES		
STRUCTURES	HIGHWAY BRIDGES		
HIGHWAY BRIDGES	SMALL BRIDGES CLOSELY SPACED		
SMALL BRIDGES CLOSELY SPACED	BRIDGES FOR LONG RIVER CROSSING		
BRIDGES FOR LONG RIVER CROSSING	TRUSS OR GIRDER		
TRUSS OR GIRDER	CANTILEVER BRIDGE		
CANTILEVER BRIDGE	COVERED BRIDGE		
COVERED BRIDGE	HIGHWAY GRADE SEPARATION		
HIGHWAY GRADE SEPARATION	MISCELLANEOUS STRUCTURES		
MISCELLANEOUS STRUCTURES	DAM WITH ROAD		
DAM WITH ROAD	LEVEE OR DIKE WITH ROAD		
LEVEE OR DIKE WITH ROAD	CONCRETE FORD OR DIP		
CONCRETE FORD OR DIP	FORD-ROAD ESTABLISHED		
FORD-ROAD ESTABLISHED	GATE ACROSS ROAD		
GATE ACROSS ROAD	BOUNDARIES		
BOUNDARIES	STATE		
STATE	COUNTY		
COUNTY	BOUNDARY LINES ESTABLISHED FOR DELIMITED URBAN PLACES		
BOUNDARY LINES ESTABLISHED FOR DELIMITED URBAN PLACES	SECTION LINE		
SECTION LINE	MATCH LINE BETWEEN ADJOINING SHEETS OF SAME COUNTY		
MATCH LINE BETWEEN ADJOINING SHEETS OF SAME COUNTY	BOUNDARY TO MARK ENLARGEMENT (INSET)		
BOUNDARY TO MARK ENLARGEMENT (INSET)	PARKS AND OTHER RESERVATIONS NATIONAL		
PARKS AND OTHER RESERVATIONS NATIONAL	STATE, COUNTY, OR MUNICIPAL PARK		
STATE, COUNTY, OR MUNICIPAL PARK	INDIAN RESERVATION, NATIONAL MONUMENT, FEDERAL DEVELOPMENT PROJECT		
INDIAN RESERVATION, NATIONAL MONUMENT, FEDERAL DEVELOPMENT PROJECT	MONUMENT--SMALL, HISTORIC SITE		
MONUMENT--SMALL, HISTORIC SITE	CITY AND VILLAGE CENTERS		
CITY AND VILLAGE CENTERS	STATE CAPITAL		
STATE CAPITAL	COUNTY SEAT		
COUNTY SEAT	OTHER CITIES AND VILLAGES		
OTHER CITIES AND VILLAGES	INCORPORATED CITY OR VILLAGE		
INCORPORATED CITY OR VILLAGE	BOUNDARY LIMITS FIXED FOR GREAT TALKING AREAS AND OTHER UNINCORPORATED URBAN PLACES DELIMITED		
BOUNDARY LIMITS FIXED FOR GREAT TALKING AREAS AND OTHER UNINCORPORATED URBAN PLACES DELIMITED			

GENERAL HIGHWAY MAP SHAWNEE COUNTY KANSAS

PREPARED BY THE
STATE HIGHWAY COMMISSION OF KANSAS
HIGHWAY PLANNING DEPARTMENT
IN COOPERATION WITH THE
U. S. DEPARTMENT OF COMMERCE
BUREAU OF PUBLIC ROADS



1951
POLYCONIC PROJECTION

