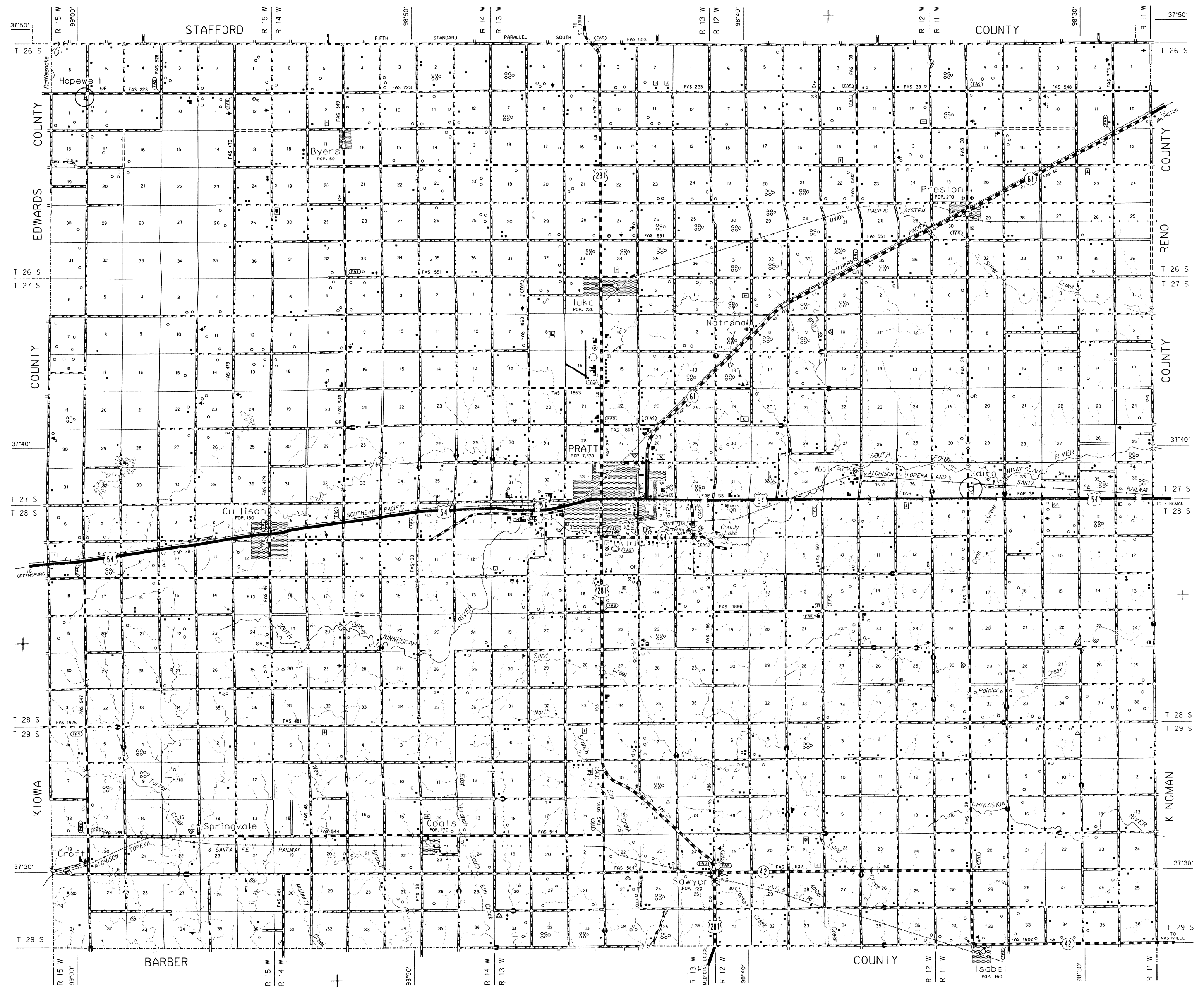
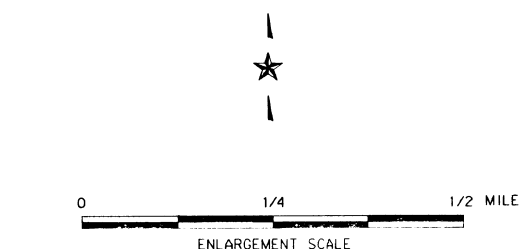
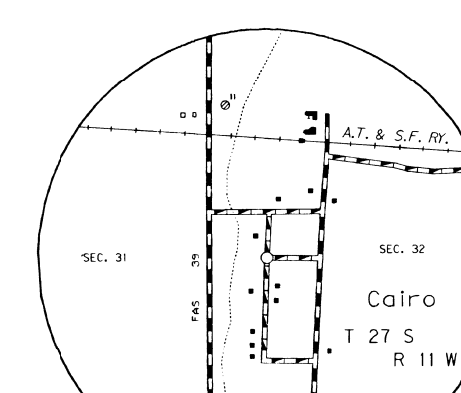
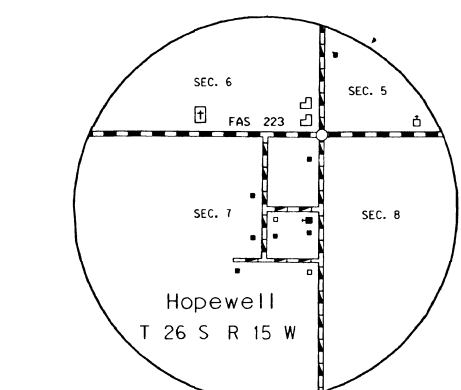


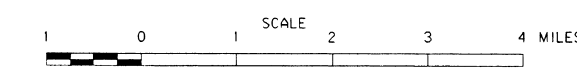
LEGEND

ROADS AND ROADWAY FEATURES	CONSERVATION AND RECREATION
Primitive Road (Type A)	Public Ground
Unimproved Road (Type B)	Flagground (Field, Etc.)
Graded and Drained Road (Type C)	Bathing Beach or Swimming Pool
Soil Surfaced Road (Type D)	Scenic Site
Gravel or Stone Road - Not Graded or Drained (Type E-1)	Camp Site No Permanent Tent or Trailer Parking
Gravel or Stone Road - Graded and Drained (Type E-2)	Tourist Court or Hotel (Figure Indicated)
Gravel or Stone Road With Stabilized Surface (Type E-3)	Number of Permanent Cabins or Cottages
Stump Road - Low Type (Type F-1, 2, 3, 4)	Camp or Lodge (Permanent Site with Buildings)
Paved Road (Type G-1, 2, 3, 4, 5, 6, 7, 8, 9, 10)	Small Park, 1/2-1/4 State, CP-County
Divided Highway	Wildlife Refuge, 1/2-1/4 State, Res. Area
Highway With Full Control of Access	Fish Hatchery
Side Roads and Streets in Unincorporated Urban Centers and Extensions of Local Roads Within Municipalities	Bird Sanctuary
4 Lane Unimproved Highway	Game Farm
Projected Road	Game Preserve
Road System Designation	State Park
Federal-Aid Interstate Highway System	State Game Refuge
Federal-Aid Primary Highway System	State Game Refuge
Federal-Aid Secondary Highway System	State Game Refuge
Federal-Aid Other Highway System	State Game Refuge
Route Between Which Distances are Measured	State Game Refuge
State Numbered Highway	State Game Refuge
State Highway System or State Numbered Highway	State Game Refuge
End of Designated System or Marked Route	State Game Refuge
RAILROADS	RAILROADS
Railroad (Any Number of Tracks Used by a Single Operating Company or by Tracks of Another Carrier Under Trackage Right)	Railroad (Any Number of Tracks Used by a Single Operating Company or by Tracks of Another Carrier Under Trackage Right)
Railroad in Discontinuance (Class of or Name of Formerly Operated Company)	Railroad in Discontinuance (Class of or Name of Formerly Operated Company)
Trackage of Separately Operated Companies	Trackage of Separately Operated Companies
Railroad Station	Railroad Station
Grade Crossing	Grade Crossing
Railroad Above	Railroad Above
Railroad Below	Railroad Below
RAILROADS AND AIRPORTS	RAILROADS AND AIRPORTS
Military Field (Some Facilities Available)	Military Field (Some Facilities Available)
Airport Complete Facilities (Commercial or Municipal)	Airport Complete Facilities (Commercial or Municipal)
Airfield, Limited Facilities	Airfield, Limited Facilities
Landing Area or Strip (Including Private Air Field)	Landing Area or Strip (Including Private Air Field)
Airport, General	Airport, General
NAVIGATION	NAVIGATION
Navigable Stream (No Interstream Navigation)	Navigable Stream (No Interstream Navigation)
DRAINAGE	DRAINAGE
River	River
Major Drainage	Major Drainage
Minor Drainage	Minor Drainage
Drainage Ditch	Drainage Ditch
Irrigation Ditch	Irrigation Ditch
Lake, Reservoir, or Pond	Lake, Reservoir, or Pond
Lake, Reservoir, or Pond With Dam	Lake, Reservoir, or Pond With Dam
Dry Lake Subject to Flood	Dry Lake Subject to Flood
Marsh or Swamp Land	Marsh or Swamp Land
Overflow Land	Overflow Land
STRUCTURES	STRUCTURES
Highway Bridge, General	Highway Bridge, General
Total Span Greater Than 20 Feet	Total Span Greater Than 20 Feet
Small Bridges Closely Spaced	Small Bridges Closely Spaced
Bridges For Long River Crossings	Bridges For Long River Crossings
Canal	Canal
Double Bridge Way	Double Bridge Way
Twin Bridge Way	Twin Bridge Way
Highway Grade Separation	Highway Grade Separation
Levee or Dike	Levee or Dike
Levee or Dike With Road	Levee or Dike With Road
Concrete Ford or Dip	Concrete Ford or Dip
Ford Road Established	Ford Road Established
Catch Sand	Catch Sand
Gate Across Road (Any Type)	Gate Across Road (Any Type)
State	State
County	County
Corporate Lines	Corporate Lines
Boundary Lines Established For Delimited Urban Places	Boundary Lines Established For Delimited Urban Places
Section Lines	Section Lines
Boundary to Mark Encroachment Inlet	Boundary to Mark Encroachment Inlet
Parks and Other Reservations (National, State, County or Municipal Park, Indian Reservation, National Monument, Federal Development Project)	Parks and Other Reservations (National, State, County or Municipal Park, Indian Reservation, National Monument, Federal Development Project)
Monument - Small, Historic Site	Monument - Small, Historic Site
State Capital	State Capital
County Seat	County Seat
Other Cities and Villages	Other Cities and Villages
Incorporated City or Village	Incorporated City or Village
Boundary Limits Fixed For Special Taxing Areas and Other Unincorporated Urban Places (Delimited)	Boundary Limits Fixed For Special Taxing Areas and Other Unincorporated Urban Places (Delimited)
NATURAL FEATURES	NATURAL FEATURES
Permanent Elevation - With Name	Permanent Elevation - With Name
(Numerals Indicate Elevation Above Sea Level)	(Numerals Indicate Elevation Above Sea Level)
EDUCATIONAL AND CORRECTIONAL INSTITUTION	EDUCATIONAL AND CORRECTIONAL INSTITUTION
Schoolhouse	Schoolhouse
Consolidated or Large School	Consolidated or Large School
Orange-Tan Hall or Community Hall	Orange-Tan Hall or Community Hall
Agricultural Experiment Station	Agricultural Experiment Station
Correctional Institution	Correctional Institution
Prison - State or Federal	Prison - State or Federal
Public Library	Public Library
PUBLIC SERVICE FACILITIES	PUBLIC SERVICE FACILITIES
Post Office	Post Office
Highway Garage	Highway Garage
Fire Engine House	Fire Engine House
Garbage or Rubbish Dump	Garbage or Rubbish Dump
Storage (Copper) Plant	Storage (Copper) Plant
Auto Salvage Yard	Auto Salvage Yard
Transformer Station	Transformer Station
Power Plant	Power Plant
Pump Station	Pump Station
Booster Station	Booster Station
Water Supply Stand Pipe or Tank	Water Supply Stand Pipe or Tank
Radio Station, With Call Letters	Radio Station, With Call Letters
Radio Range Station	Radio Range Station
Water Treatment Plant	Water Treatment Plant
Jurisdiction	Jurisdiction
U.S. Corps of Engineers Office	U.S. Corps of Engineers Office
MISCELLANEOUS	MISCELLANEOUS
Fort, Army Camp, Barracks or Other Military Post	Fort, Army Camp, Barracks or Other Military Post
Trigonometric Station	Trigonometric Station

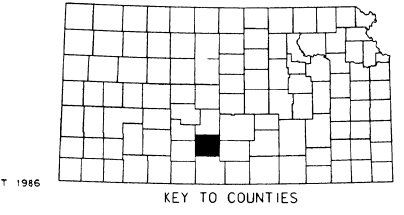


# GENERAL HIGHWAY MAP PRATT COUNTY KANSAS

PREPARED BY THE  
KANSAS DEPARTMENT OF TRANSPORTATION  
BUREAU OF TRANSPORTATION PLANNING  
IN COOPERATION WITH THE  
U. S. DEPARTMENT OF TRANSPORTATION  
FEDERAL HIGHWAY ADMINISTRATION



1987  
POLYCONIC PROJECTION



POPULATION DIVISION OF THE BUREAU 1986  
REVISIONS COMPLETED 10-27-87  
SYSTEMS REVISED TO 1-20-88

COMPUTER  
GENERATED

DIGITIZED FROM U.S.G.S. QUADRANGLE MAPS