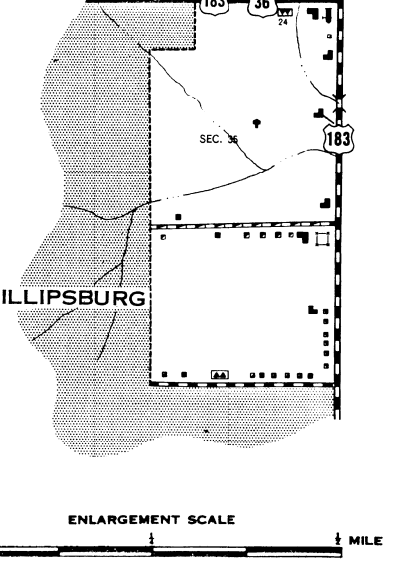
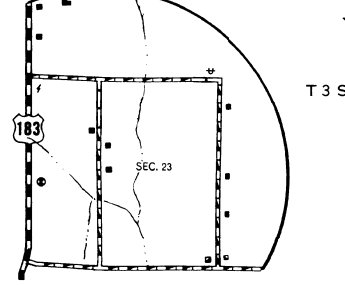
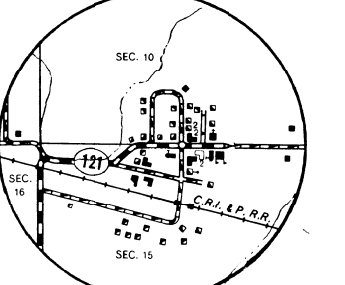
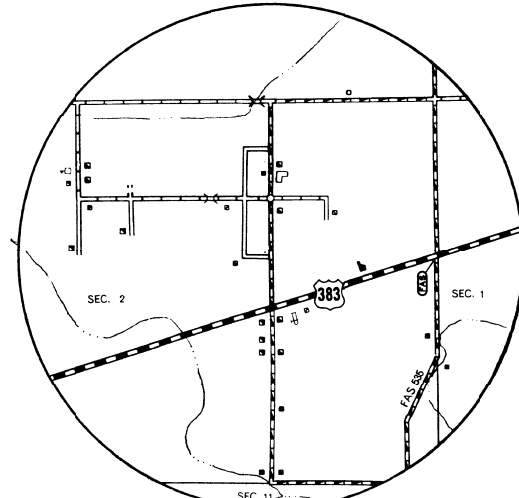


LEGEND

- | | |
|--|--|
| <p>ROADS AND ROADWAY FEATURES</p> <ul style="list-style-type: none"> PRIMITIVE ROAD TYPE 1 UNIMPROVED ROAD TYPE 2 GRADED AND DRAINED ROAD TYPE 3 SOIL SURFACED ROAD TYPE 4 GRAVEL OR STONE ROAD GRAVEL OR STONE ROAD - NOT GRADED OR DRAINED TYPE 5 GRAVEL OR STONE ROAD - GRADED AND DRAINED TYPE 6 GRAVEL OR STONE ROAD - STABILIZED SURFACE TYPE 7 BITUMINOUS ROAD-LOW TYPE TYPE 8 PAVED ROAD TYPE 9 DIVIDED HIGHWAY HIGHWAY WITH FULL CONTROL OF ACCESS SIDE ROADS AND STREETS IN URBAN PORATED URBAN COMPACTS AND EXTENSIONS ROADS WITHIN MUNICIPALITIES 4 LANE UNDIVIDED HIGHWAY PRIVATE ROAD PROJECTED ROAD <p>ROAD SYSTEM DESIGNATION</p> <ul style="list-style-type: none"> FEDERAL-AID INTERSTATE HIGHWAY SYSTEM FEDERAL-AID PRIMARY HIGHWAY SYSTEM FEDERAL-AID SECONDARY HIGHWAY SYSTEM POINTS BETWEEN WHICH DISTANCES ARE MEASURED INDICATED THUS INTERSTATE NUMBERED HIGHWAY U NUMBERED HIGHWAY STATE HIGHWAY SYSTEM OR STATE NUMBERED HIGHWAY END OF DESIGNATED SYSTEM OR MARKED ROUTE <p>RAILROADS</p> <ul style="list-style-type: none"> RAILROAD RAILROAD IN JUNCTION RAILROAD IN JUNCTION NARROW GAUGE RAILROAD ELECTRIC INTERURBAN OR SUBURBAN RAILROAD ABANDONED RAILROAD ABANDONED ELECTRIC LINE RAILROAD STATION <p>RAILROAD CROSSINGS</p> <ul style="list-style-type: none"> RAILROAD ABOVE RAILROAD BELOW RAILROAD BRIDGE <p>AIRWAYS AND AIRPORTS</p> <ul style="list-style-type: none"> AIR ROUTE MILITARY FIELD AIRPORT, COMPLETE FACILITIES AIRFIELD, LIMITED FACILITIES LANDING AREA OR STRIP AIRWAY LIGHT BEACON AIRPORT, GENERAL <p>NAVIGATION</p> <ul style="list-style-type: none"> NAVIGABLE STREAM INTERMITTENT STREAM DRAINAGE INTERMITTENT STREAM NARROW STREAM WIDE STREAM DRAINAGE DITCH IRIGATION DITCH LAKE, RESERVOIR, OR POND LAKE, RESERVOIR, OR POND WITH DAM DRY LAKE SUBJECT TO FLOOD MARSH OR SWAMP LAND GROUP OF GRAM STORAGE BINS OVERFLOW LAND <p>STRUCTURES</p> <ul style="list-style-type: none"> HIGHWAY BRIDGE, GENERAL RAILROAD BRIDGE SMALL BRIDGES CLOSELY SPACED BRIDGES FOR LONG RIVER CROSSINGS GENERAL ARCH TRUSS OR GIRDER CANTILEVER BRIDGE COVERED BRIDGE HIGHWAY GRADE SEPARATION MISCELLANEOUS STRUCTURES DAM WITH ROAD LEVEE OR DIKE LEVEE OR DIKE WITH ROAD CONCRETE FORD OR DIP FORD-ROAD ESTABLISHED CATTLE GUARD GATE ACROSS ROAD <p>BOUNDARIES</p> <ul style="list-style-type: none"> STATE COUNTY CORPORATE LINES BOUNDARY LINES ESTABLISHED FOR DELIMITED URBAN PLACES SECTION LINE MATCH LINE BETWEEN ADJOINING SHEETS OF SAME COUNTY BOUNDARY TO MARK ENLARGEMENT INSET PARKS AND OTHER RESERVATIONS NATIONAL, STATE, COUNTY OR MUNICIPAL PARK INDIAN RESERVATION, NATIONAL MONUMENT, FEDERAL DEVELOPMENT PROJECT MONUMENT-SMALL HISTORIC SITE CITY AND VILLAGE CENTERS STATE CAPITAL OTHER CITIES AND VILLAGES INCORPORATED CITY OR VILLAGE BOUNDARY LIMITS FIXED FOR SPECIAL TAXING AREAS AND OTHER UNINCORPORATED URBAN PLACES DELIMITED | <p>CONSERVATION AND RECREATION</p> <ul style="list-style-type: none"> PICNIC GROUND PLAYGROUND, BALL FIELD, ETC. BATHING BEACH OR SWIMMING POOL SCENIC SITE CAMP SITE, NO PERMANENCE TOURIST COURT OR MOTEL CAMP OR LODGE FISH HATCHERY BIRD SANCTUARY GAME FARM GAME PRESERVE RIFLE CLUB GOLF GROUND OR COUNTRY CLUB POLO GROUNDS RIDING ACADEMY YACHT CLUB AMUSEMENT PARK OR MALL FAIR GROUND, RACE COURSE, SPEEDWAY DRIVE-IN THEATRE <p>FARM UNITS, DWELLINGS, ETC.</p> <ul style="list-style-type: none"> FARM UNIT DWELLING ROWS OR GROUPS OF DWELLINGS CLOSELY SPACED COMBINED DWELLING AND STORE DWELLING AND FILLING STATION DWELLING, BUSINESS, AND FILLING STATION TENANT HOUSE SEASONAL OR SUMMER COLONY DWELLING HOTEL, INN CHURCH OR OTHER RELIGIOUS INSTITUTION CHURCH AND SCHOOL CEMETERY CHURCH WITH CEMETERY ADJACENT FRESH AIR FARM OR REST HOME HOSPITAL WELL STATE PORT OF ENTRY OR WEIGHT STATION GROUP OF MIXED CULTURAL FEATURES CLOSELY SPACED <p>INDUSTRIAL</p> <ul style="list-style-type: none"> STORE OR SMALL BUSINESS ESTABLISHMENT BUSINESS AND POST OFFICE BUSINESS, FILLING STATION, AND POST OFFICE FACTORY OR INDUSTRIAL PLANT MINE-SHAFT OR DRIFT OIL OR GAS WELL OIL OR GAS FIELD OIL TANK GAS TANK GROUP OF STORAGE TANKS FILLING STATION PUMPING STATION CAUSING OR PUMPING STATION VALVE HOUSE SEASONAL INDUSTRY MILK DEPOT, CREAMERY OR CHEESE FACTORY FRUIT OR NUT ORCHARD ROAD STAND FARM PRODUCTS SALES BARNSHED-GENERAL GRAIN ELEVATOR GROUP OF GRAM STORAGE BINS GREENHOUSE NURSERY STOCK YARD-LOADING PEN OR CORRAL STOCK PEN AT RAILROAD SIDING GRAVEL PIT QUARRY MILK OR OVEN LINE <p>EDUCATIONAL AND CORRECTIONAL INSTITUTIONS</p> <ul style="list-style-type: none"> SCHOOLHOUSE CONSOLIDATED OR LARGE SCHOOL TOWNHALL, GRANGE, OR COMMUNITY HALL AGRICULTURAL EXPERIMENT STATION COUNTY FARM CORRECTIONAL INSTITUTION <p>PUBLIC SERVICE FACILITIES</p> <ul style="list-style-type: none"> POST OFFICE HIGHWAY GARAGE FIRE ENGINE HOUSE GARAGE OR RUBBISH GUMP SEWAGE DISPOSAL PLANT AUTOSALVAGE YARD TRANSFORMER STATION POWER PLANT POWER SUBSTATION BOOSTER STATION WATER SUPPLY, STAND PIPE, OR TANK RADIO STATION RADIO RANGE STATION US WEATHER STATION <p>MISCELLANEOUS</p> <ul style="list-style-type: none"> FORT, ARMY CAMP, BARRACKS, OR OTHER MILITARY POST TRIANGULATION STATION BENCH MARK <p>NATURAL FEATURES</p> <ul style="list-style-type: none"> PROMINENT ELEVATION WITH NAME SINK OR DEPRESSION |
|--|--|



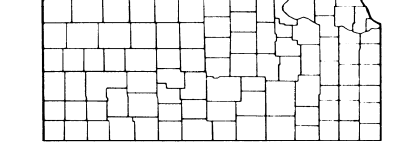
**GENERAL HIGHWAY MAP
PHILLIPS COUNTY
KANSAS**

PREPARED BY THE
STATE HIGHWAY COMMISSION OF KANSAS
DEPARTMENT OF PLANNING AND DEVELOPMENT
IN COOPERATION WITH THE
U. S. DEPARTMENT OF TRANSPORTATION
FEDERAL HIGHWAY ADMINISTRATION
BUREAU OF PUBLIC ROADS

SCALE 0 1 2 3 4 MILES

1974

POLYGONIC PROJECTION



REVISIONS COMPLETED 12-28-74
KANSAS STATE PRINTING PLANT
U.S. GEOLOGICAL SURVEY
SYSTEMS REVISED TO 3-5-75