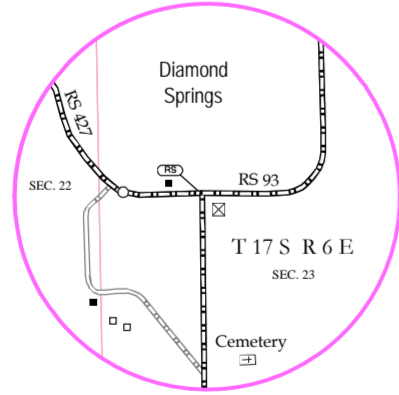
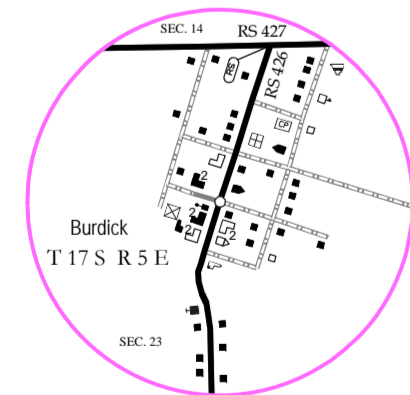
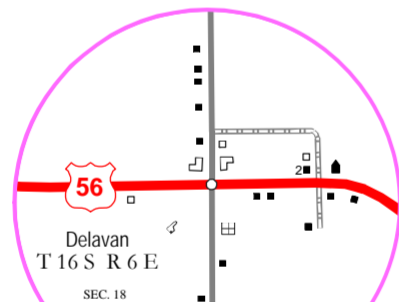
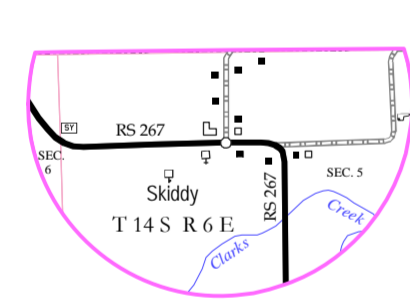
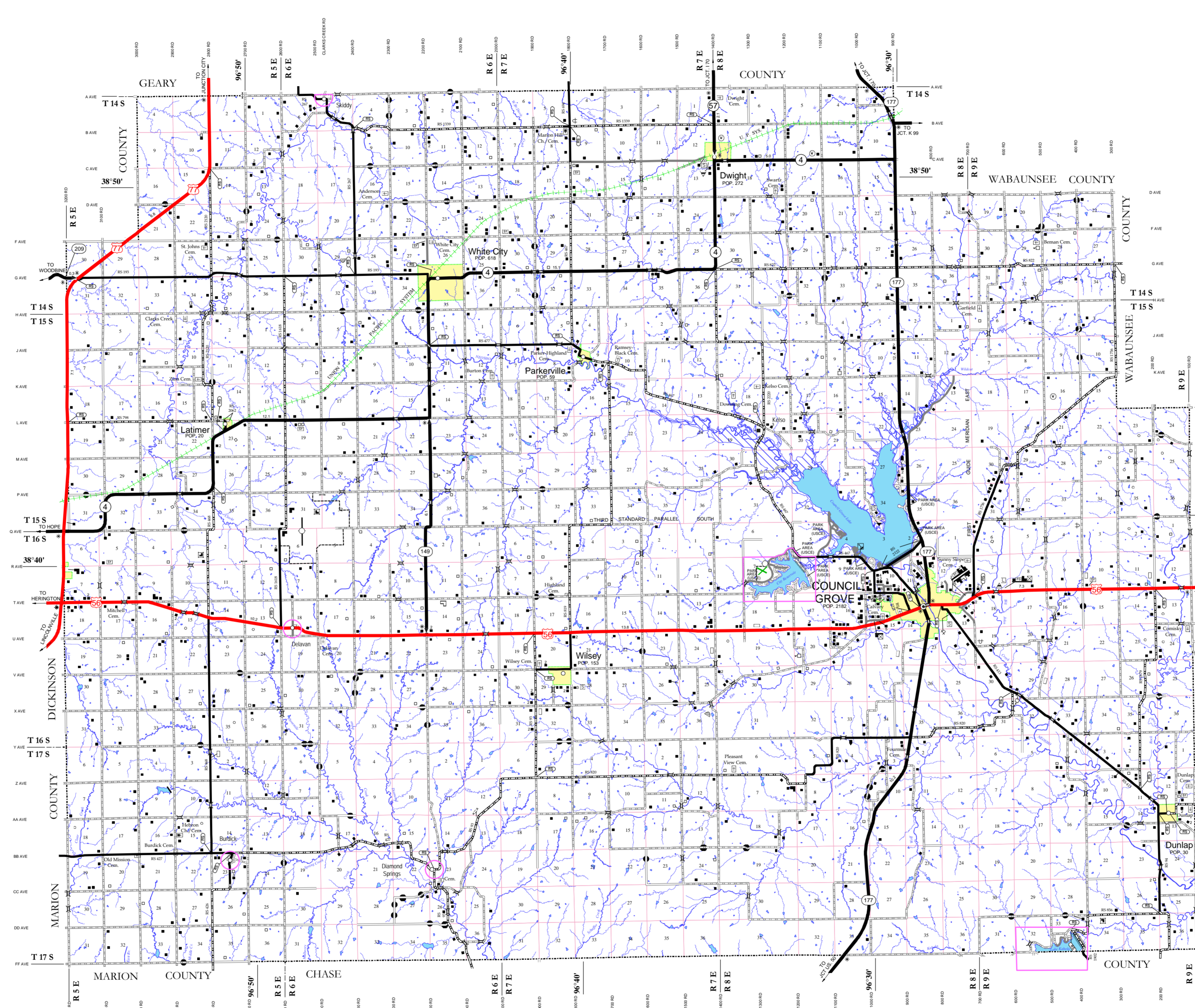


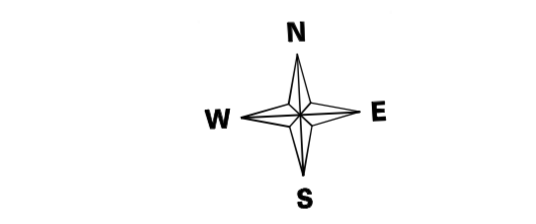
ENLARGED 5 NOT 8  
0.00 0.25 0.50  
Miles



0.00 0.25 0.50  
Miles



ROADS AND ROADWAY FEATURES		LEGEND	
Controlled Access (With Interchange) - Interstate		CONSERVATION AND RECREATION	
Kansas Turnpike (KTA) (With Interchange)		Public Recreation	
US Route - Controlled Access (With Interchange)		Scenic, Tourist, or Historical Site	
US Route - Divided		Trailer Park	
US Route - Undivided		Hotel or Motel	
State Route - Controlled Access (With Interchange)		Camp or Lodge (Permanent Site with Building)	
State Route - Divided		Small Park (SP - State Park, CP - County Park, MP - Municipal Park, SR - Safety Rest Area)	
State Route - Undivided		Game Farm	
RS Route - Divided		Fish Hatchery	
RS Route - Paved		Game Preserve or Bird Sanctuary	
RS Route - Unpaved		Rifle Club (Public)	
Minor Road - Paved		Golf Course or Country Club	
Minor Road - Stone or Gravel		Riding Academy, Saddle Club, or Stables	
Minor Road - Soil		Race Course or Speedway	
Side Road or Street in Unincorporated Area		Marina	
ROAD SYSTEM DESIGNATION		Rodeo Grounds	
Rural Secondary System		Fair Grounds	
County Road System		FARM UNITS, DWELLINGS, ETC. IN USE ABANDONED	
Points Between Which Distances are Measured		Dwelling	
Interstate Numbered Highway		Multi Dwelling	
U.S. Numbered Highway		Storage Tanks (Gas or Oil)	
State Highway System or State Numbered Highway		Cemetery	
End of Designated System or Marked Route		Church with Cemetery	
Kansas Turnpike Authority		Rest Home	
RAILROADS		Hospital	
Railroad (Operating Company)		State Port of Entry or Weigh Station	
Grade Crossing		Group of Mixed Cultural Features Closely Spaced	
Railroad Above		INDUSTRIAL	
Railroad Below		Store or Small Business Establishment	
AIRWAYS AND AIRPORTS		Mine	
Military Field (Some Facilities Available)		Oil or Gas Wells	
Airfield (Limited Facilities)		Storage Tanks (Gas or Oil)	
Airway Light Beacon (General)		Pumping or Gauging Station	
Airport (Complete Facilities) (Commercial or Municipal)		Orchard or Tree Farm	
DRAINAGE		Grain Elevator	
Major River		Stock Yard - Loading Pen or Corral	
River		Quarry	
Major Drainage		Feed Lot	
Minor Drainage		EDUCATIONAL AND CORRECTIONAL INSTITUTION	
Irrigation Ditch or Canal		Schoolhouse	
Lake Subject to Flood, Overflow Land		Grange, Townhall, or Community Center	
Lake, Reservoir, or Pond (With Dam)		U.S. Agricultural Research Center	
BRIDGES		Correctional Institution	
Bridges (Total Span Greater than 20 Feet)		Museum (General)	
Open to Traffic		PUBLIC SERVICE FACILITIES	
Closed to Traffic		Post Office	
Highway Grade Separation		Road Maintenance Shop	
MISCELLANEOUS		Fire Station	
Roadside		Landfill	
Blue and Walking Trail		Sewage Disposal Plant	
Levee or Dike		Salvage Yard	
Natural or Concrete Ford		Power Plant	
Gate Across Any Road (Any Type)		Power Substation	
BOUNDARIES		Water Tower	
State		Water Treatment Plant	
County		Wind Farm	
City Limits		Radio Station (With Call Letters)	
Section Lines		U.S. Corps of Engineers Office	
Boundary to Mark Enlargement Inset		NATURAL FEATURES	
Parks and Other Reservations National, State, County or Municipal Park, Indian Reservation, National Monument, Federal Development Project		Prominent Elevation - With Name (Numerals Indicate Elevation Above Sea Level)	
Urban Boundary		MILITARY	
CITIES OR NAMED PLACES		Fort, Army Camp, Barracks, or Other Military Post	
State Capital		CITIES OR NAMED PLACES	
County Seat		State Capital	
Populated Places		County Seat	
Locale		Populated Places	
Incorporated City		Locale	
		Incorporated City	



# GENERAL HIGHWAY MAP MORRIS COUNTY KANSAS

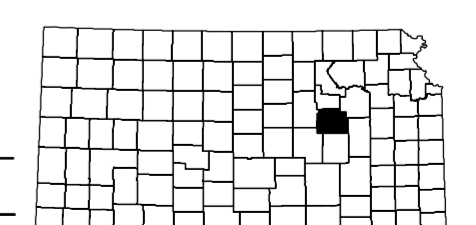
PREPARED BY THE  
**KANSAS DEPARTMENT OF TRANSPORTATION  
BUREAU OF TRANSPORTATION PLANNING**  
IN COOPERATION WITH  
**U.S. DEPARTMENT OF TRANSPORTATION  
FEDERAL HIGHWAY ADMINISTRATION**

0 1 2 3 4 5  
Miles

September 2012  
LAMBERT CONFORMAL CONIC PROJECTION

POPULATION - 2000 U.S. CENSUS  
JULY 1, 2011 ESTIMATES AS  
CERTIFIED TO THE SECRETARY OF STATE  
BY DIVISION OF THE BUDGET JULY 1, 2011

REINVENTORY COMPLETED 12-21-2010  
RURAL SECONDARY SYSTEMS REVISED TO 11-04-2003  
STATE BRIDGE DATA REVISED TO 01-22-2010  
NON-SYS BRIDGE DATA REVISED TO 10-08-2008



KDOT makes no warranties, guarantees, or representations for accuracy of this information and assumes no liability for errors or omissions.

COMPUTER GENERATED