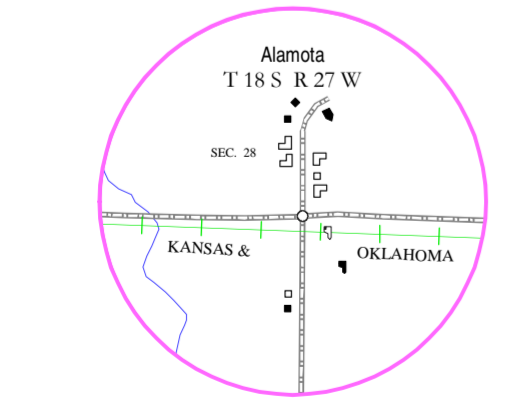
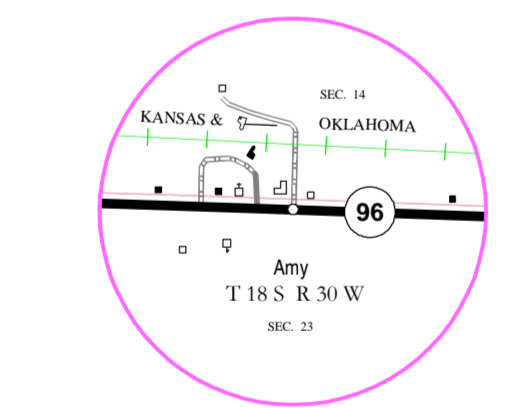
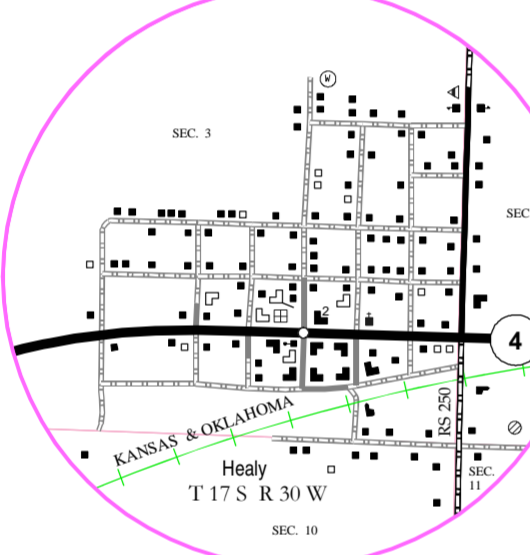
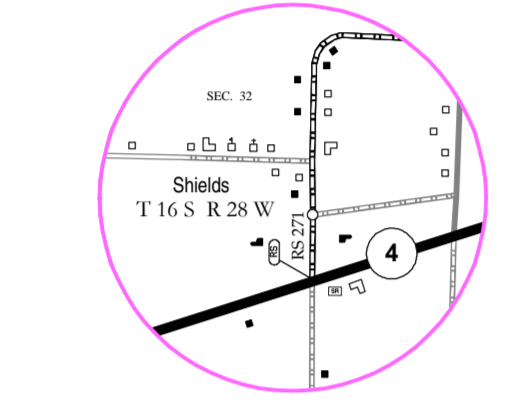
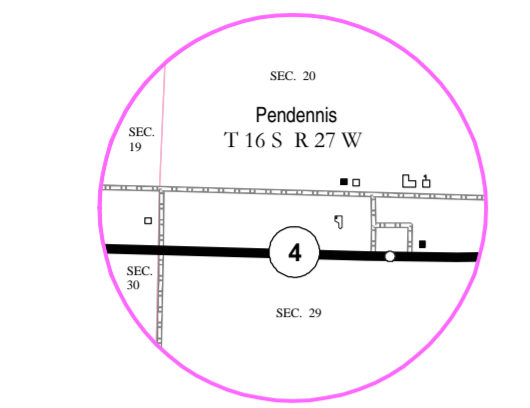


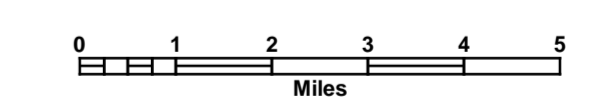
ROADS AND ROADWAY FEATURES	
Controlled Access (With Interchange) - Interstate	
Kansas Turnpike (KTA) (With Interchange)	
US Route - Controlled Access (With Interchange)	
US Route - Unimproved	
State Route - Controlled Access (With Interchange)	
State Route - Unimproved	
RS Route - Divided	
RS Route - Paved	
RS Route - Unpaved	
Minor Road - Paved	
Minor Road - Stone or Gravel	
Minor Road - Soil	
Side Road or Street in Unincorporated Area	
ROAD SYSTEM DESIGNATION	
Rural Secondary System	
County Road System	
County Road System	
Points Between Which Distances are Measured	
Interstate Numbered Highway	
U.S. Numbered Highway	
State Highway System or State Numbered Highway	
End of Designated System or Marked Route	
Kansas Turnpike Authority	
RAILROADS	
Railroad (Operating Company)	
Grade Crossing	
Railroad Above	
Railroad Below	
AIRWAYS AND AIRPORTS	
Military Field (Some Facilities Available)	
Airfield (Limited Facilities)	
Airway Light Beacon (General)	
Airport (Complete Facilities) (Commercial or Municipal)	
DRAINAGE	
Major River	
River	
Major Drainage	
Minor Drainage	
Irrigation Ditch or Canal	
Lake Subject to Flood, Overflow Land	
Lake, Reservoir, or Pond (With Dam)	
BRIDGES	
Bridges (Total Span Greater than 20 Feet)	
Open to Traffic	
Closed to Traffic	
Highway Grade Separation	
MISCELLANEOUS	
Roundabout	
Blue and Walking Trail	
Levee or Dike	
Natural or Concrete Ford	
Gate Across Any Road (Any Type)	
BOUNDARIES	
State	
County	
City Limits	
Section Lines	
Boundary to Mark Enlargement Inset	
Parks and Other Reservations National, State, County or Municipal Park, Indian Reservation, National Monument, Federal Development Project	
Urban Boundary	



GENERAL HIGHWAY MAP LANE COUNTY KANSAS

PREPARED BY THE

**KANSAS DEPARTMENT OF TRANSPORTATION
BUREAU OF TRANSPORTATION PLANNING**
IN COOPERATION WITH
**U.S. DEPARTMENT OF TRANSPORTATION
FEDERAL HIGHWAY ADMINISTRATION**



JUNE 2010

LAMBERT CONFORMAL CONIC PROJECTION

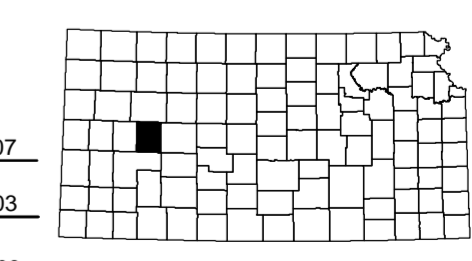
POPULATION - 2000 U.S. CENSUS
JULY 1, 2007 ESTIMATES AS
CERTIFIED TO THE SECRETARY OF STATE
BY DIVISION OF THE BUDGET JULY 1, 2008

REINVENTORY COMPLETED 10-8-2007

RURAL SECONDARY
SYSTEMS REVISED TO 11-4-2003

STATE BRIDGE DATA
REVISED TO 10-26-2008

NON-SYS BRIDGE DATA
REVISED TO 10-8-2008



KDOT makes no warranties, guarantees, or
representations for accuracy of this information and
assumes no liability for errors or omissions.

**COMPUTER
GENERATED**