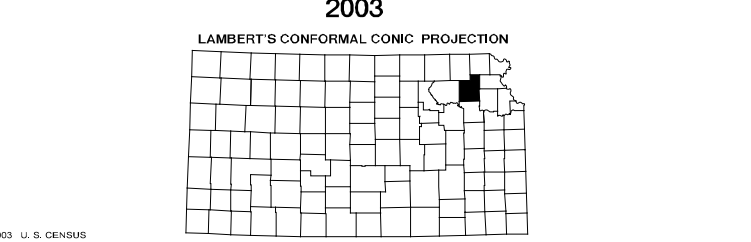
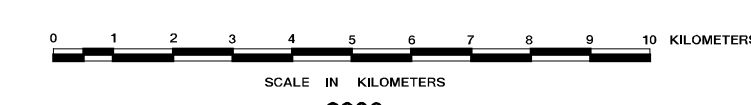
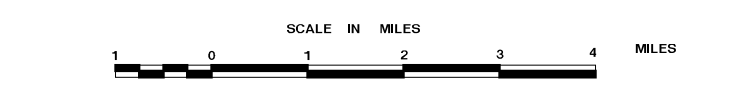


ROADS AND ROADWAY FEATURES		CONSERVATION AND RECREATION	
Soil Surfaced Road	Public Recreation	▲
Gravel or Stone Road	Scenic, Tourist or Historical Site	□
Paved Road	Trailer Park	▲
Divided RS Route	Hotel or Motel	▲
Highway With Full Control of Access	Camp or Lodge (Permanent Site with Building)	▲
4 Lane Undivided Highway	Small Park (SP-State, CP-County)	□
Divided Highway	MP-Municipal, SS-Safety Rest Area	□
Paved Highway	Fish Hatchery	□
Projected Road	Game Farm	□
Side Roads and Streets In Unincorporated Places	Game Preserve or Bird Sanctuary	□
ROAD SYSTEM DESIGNATION		Rifle Club (Public)	□
Rural Secondary System	Golf Course or Country Club	□
County Road System	Riding Academy, Saddle Club, Stables	□
Points Between Which Distances are Measured	Race Course, Speedway	□
Interstate Numbered Highway	Marina	□
U. S. Numbered Highway	Rodeo Grounds	□
State Highway System or State Numbered Highway	Fairgrounds	□
End of Designated System or Metrol Route	FARM UNITS, DWELLINGS, ETC.	
Kansas Turnpike Authority	Dwelling	○
RAILROADS	Multi Dwelling	○
Railroad - Operating Company	Church or Other Religious Institution	○
Grade Crossing	Cemetery	□
Railroad Above	Church With Cemetery	□
Railroad Below	Rest Home	□
AIRWAYS AND AIRPORTS		Hospital	□
Military Field (Some Facilities Available)	State Port of Entry or Weight Station	□
Airfield, Limited Facilities	Group or Mixed Cultural Features Closely Spaced	□
Airway Light Beacon, General	Figure above bar indicates number of dwellings	□
Airport, Complete Facilities (Commercial or Municipal)	Included in the group. Figures over individual units show the number of each included regardless of order	□
DRAINAGE		INDUSTRIAL	
Major River	Store or Small Business Establishment	□
Wares	Factory	□
Minor Drainage	Mine	□
Irrigation Ditch-Canal	Oil or Gas Well (a)	○
Lake Subject to Flood, Overflow Land	Storage Tank(s) (Gas or Oil)	○
Lake, Reservoir, or Pond (With Dam)	Purging or Gauging Station	□
STRUCTURES		Orchard or Tree Farm	□
Highway Bridge, General	Grain Elevator	□
(Total Span Greater Than 20 Feet)	Stock Yard-Loading Pen or Corral	□
Small Bridges Closely Spaced	Quarry	□
Bridges General	Feed Lot	□
Twin Bridges	Shopping Center	□
Interstate Highway Double Bridge	EDUCATIONAL AND CORRECTIONAL INSTITUTION	
Interstate Highway Twin Bridge	Schoolhouse	□
Highway Grade Separation	Grange, Townhall or Community Hall	□
Roundabout	K.S.U. Agricultural Research Center	□
Miscellaneous		Correctional Institution	□
Bike and Walking Trail	Museum (General)	□
Levee or Dike	Public Library	□
Natural or Concrete Ford	PUBLIC SERVICE FACILITIES	
Gate Across Road (Any Type)	Post Office	□
BOUNDARIES		Road Maintenance Shop	□
State	Fire Station	□
County	Landfill	□
City Limits	Sewage Disposal Plant	□
Section Lines	Salvage Yard	□
Boundary to Mark Entanglement Inset	Power Plant	□
Parks and Other Reservations National, State, County or Municipal Park, Indian Reservation, National Monument, Federal Development Project	Power Substation	□
Urban Boundary	Water Tower	□
CITIES OR NAMED PLACES		Rack Station (With Call Letters)	□
State Capital	Water Treatment Plant	□
County Seat	U. S. Corps of Engineers Office	□
Populated Place	NATURAL FEATURES	
Locale	Prominent Elevation - With Name	○
Incorporated City	(Numerals Indicate Elevation Above Sea Level)	○
		MISCELLANEOUS	
		Fort, Army Camp, Barracks or Other Military Post	□

GENERAL HIGHWAY MAP JACKSON COUNTY KANSAS

PREPARED BY THE
KANSAS DEPARTMENT OF TRANSPORTATION
BUREAU OF TRANSPORTATION PLANNING
IN COOPERATION WITH THE
U. S. DEPARTMENT OF TRANSPORTATION
FEDERAL HIGHWAY ADMINISTRATION



POPULATION - 2003 U. S. CENSUS
DESIGNED BY THE SECRETARY OF STATE
BY DIVISION OF THE BUREAU JULY 1, 2004
REVISIONS COMPLETE, 5-19-2003
FROM SECRETARY
SYSTEMS REVISIONS TO 12-7-2004

COMPUTER
GENERATED