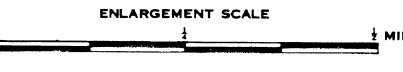
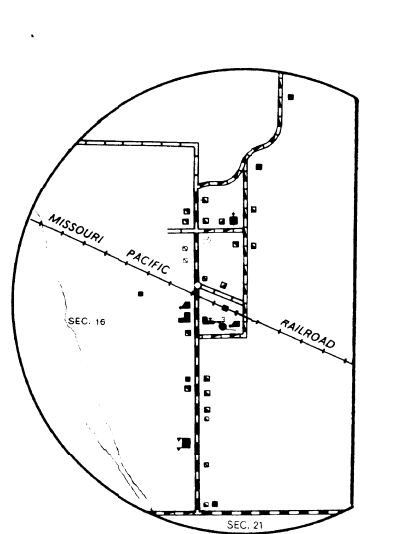
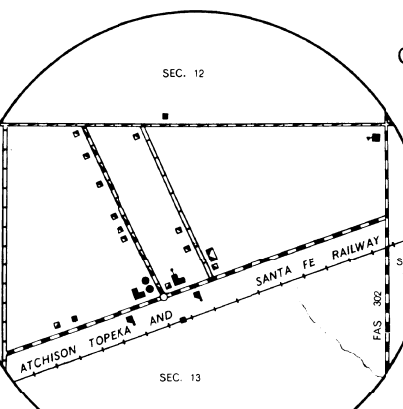
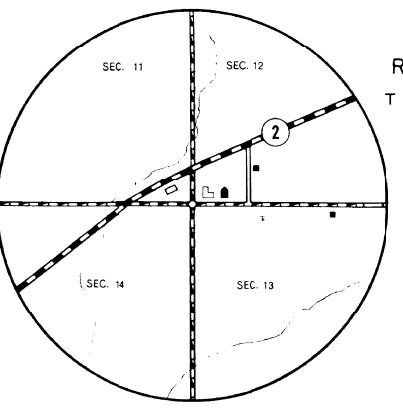
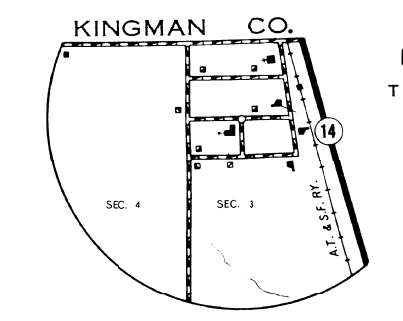
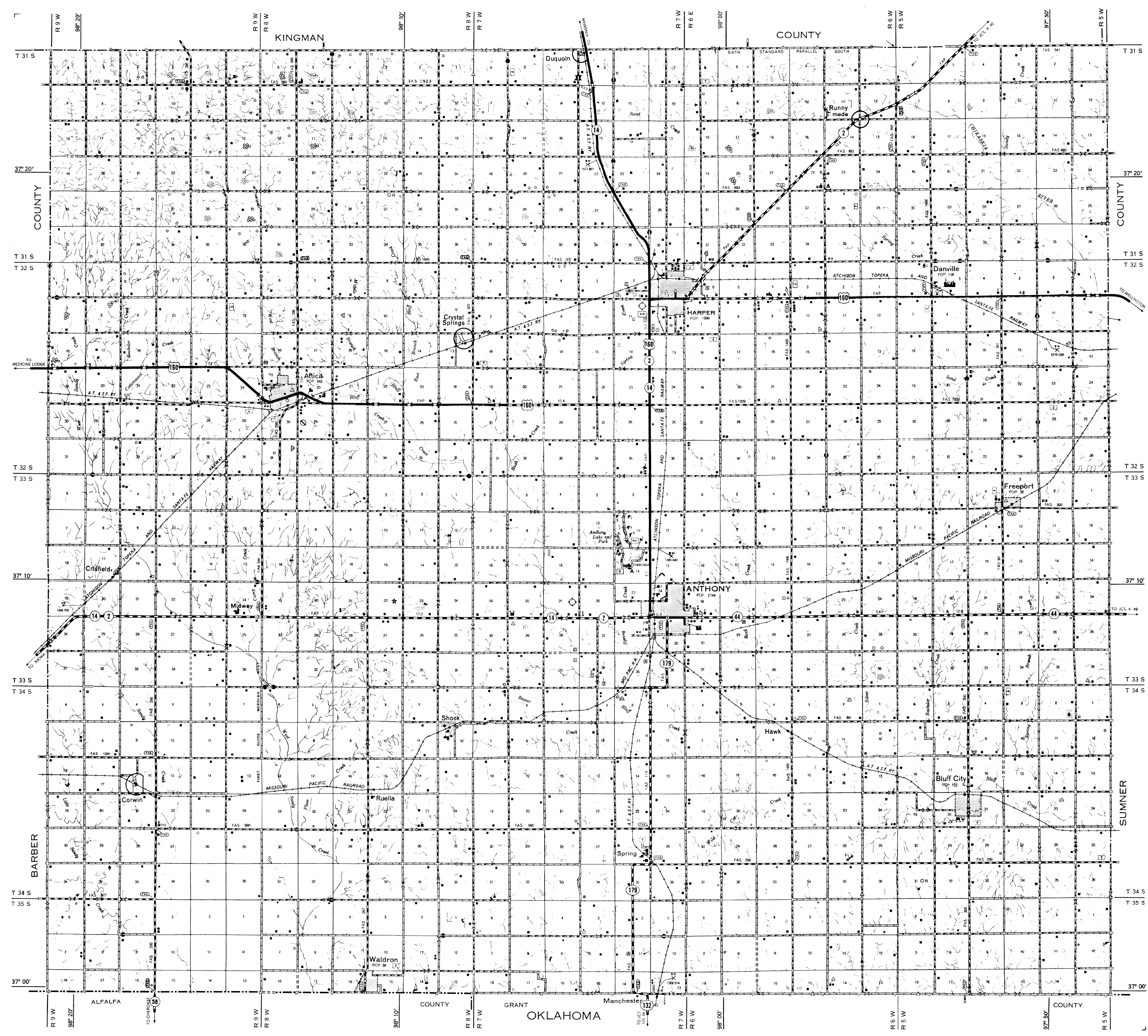


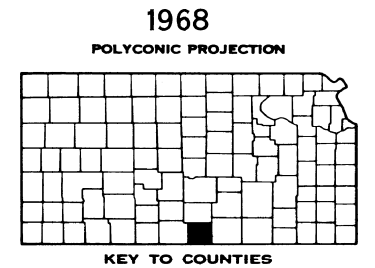
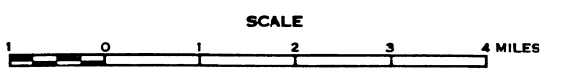
LEGEND

ROADS AND ROADWAY FEATURES	CONSERVATION AND RECREATION
PRIMITIVE ROAD	PICNIC GROUND
UNIMPROVED ROAD	PLAYGROUND, BALL FIELD, ETC.
GRADED AND DRAINED ROAD	BATHING BEACH OR SWIMMING POOL
SOIL SURFACED ROAD	SCENIC SITE
GRAVEL OR STONE ROAD	CAMP SITE, NO PERMANENCE TENT OR TRAILER PARKING
NOT GRADED OR DRAINED ROAD	TOURIST COURT OR MOTEL, TOURIST HOSPITALITY
GRAVEL OR STONE ROAD	CAMP OF LODGE, PERMANENCE TENT WITH BUILDINGS
GRADED AND DRAINED ROAD	SMALL PARK
PAVED ROAD	FISH HATCHERY
STABILIZED SURFACE ROAD	GAME PRESERVE
BITUMINOUS ROAD-LOW TYPE	BIRD SANCTUARY
PAVED ROAD	GAME FARM
DIVIDED HIGHWAY	GAME PRESERVE
HIGHWAY WITH FULL CONTROL OF ACCESS	RIFLE CLUB
SIDE ROADS AND STREETS IN UNINCORPORATED URBAN COMPACTS AND EXTENSIONS OF LOCAL ROADS WITHIN MUNICIPALITIES	GOLF GROUND OR COUNTRY CLUB
4 LANE UNDIVIDED HIGHWAY	YACHT CLUB
PRIVATE ROAD	AMUSEMENT PARK OR HALL
PROJECTED ROAD	FAIR GROUND, RACE COURSE, SPEEDWAY
	DRIVE-IN THEATRE
ROAD SYSTEM DESIGNATION	FARM UNITS, DWELLINGS, ETC.
FEDERAL AID INTERSTATE HIGHWAY SYSTEM	FARM UNIT
FEDERAL AID PRIMARY HIGHWAY SYSTEM	ROWS OR GROUPS OF DWELLINGS CLOSELY SPACED
FEDERAL AID SECONDARY HIGHWAY SYSTEM	COMBINED DWELLING AND STORE
POINTS BETWEEN WHICH DISTANCES ARE MEASURED INDICATED THIS	DWELLING AND POST OFFICE
INTERSTATE NUMBERED HIGHWAY	DWELLING AND FILLING STATION
U.S. NUMBERED HIGHWAY	DWELLING, BUSINESS, AND FILLING STATION
STATE HIGHWAY SYSTEM OR STATE NUMBERED HIGHWAY	TENANT HOUSE
END OF DESIGNATED SYSTEM OR MARKED ROUTE	SEASONAL OR SUMMER COLONY DWELLING
	HOTEL, INN
	CHURCH OR OTHER RELIGIOUS INSTITUTION
RAILROADS	CHURCH AND SCHOOL
RAILROAD	CEMETERY
RAILROAD IN JUNCTION	CHURCH WITH CEMETERY ADJACENT
RAILROAD	FRESH AIR FARM OR REST HOME
ELECTRIC INTERURBAN OR SUBURBAN RAILROAD	HOSPITAL
RAILROAD	WELL
ABANDONED RAILROAD	STATE PORT OF ENTRY OR WEIGHT STATION
ABANDONED ELECTRIC LINE	GROUP OF MIXED CULTURAL FEATURES CLOSELY SPACED
RAILROAD STATION	GROUP OF MIXED CULTURAL FEATURES CLOSELY SPACED
	RAILROAD CROSSINGS
	GRADE CROSSING
	RAILROAD ABOVE
	RAILROAD BELOW
	RAILROAD BRIDGE
	AIRWAYS AND AIRPORTS
	AIR ROUTE
	MILITARY FIELD
	AIRPORT, COMPLETE FACILITIES
	AIRFIELD LIMITED FACILITIES
	LANDING AREA OR DRIFTP
	AIRWAY LIGHT BEACON, GENERAL
	AIRPORT, GENERAL
	NAVIGATION
	NAVIGABLE STREAM
	INTERMITTENT STREAM
	INTERMITTENT STREAM
	NARROW STREAM
	WIDE STREAM
	DRAINAGE DITCH
	IRRIGATION DITCH
	LAKE, RESERVOIR, OR POND WITH DAM
	LAKE, RESERVOIR, OR POND WITH DAM
	DRY LAKE SUBJECT TO FLOOD
	MARSH OR SWAMP LAND
	OVERFLOW LAND
	STRUCTURES
	HIGHWAY BRIDGE, GENERAL
	SMALL BRIDGES CLOSELY SPACED
	BRIDGES FOR LONG RIVER CROSSING
	GENERAL
	ARCH
	TRUSS OR GIRDER
	CANTILEVER BRIDGE
	COVERED BRIDGE
	HIGHWAY GRADE SEPARATION
	MISCELLANEOUS STRUCTURES
	DAM WITH ROAD
	LEVEE OR DIKE WITH ROAD
	CONCRETE FORD OR DIP
	FORD-ROAD ESTABLISHED
	CATTLE GUARD
	GATE ACROSS ROAD
	BOUNDARIES
	STATE
	COUNTY
	CORPORATE LINES
	DELIMITED URBAN PLACES
	SECTION LINE
	MATCH LINE BETWEEN ADJOINING SHEETS OF SAME COUNTY
	BOUNDARY TO MARK ENLARGEMENT INSET
	PARKS AND OTHER RESERVATIONS NATIONAL
	STATE, COUNTY, OR MUNICIPAL PARK
	INDIAN RESERVATION, NATIONAL MONUMENT, FEDERAL DEVELOPMENT PROJECT
	MONUMENT-SMALL, HISTORIC SITE
	CITY AND VILLAGE CENTERS
	STATE CAPITAL
	COUNTY SEAT
	OTHER CITIES AND VILLAGES
	INCORPORATED CITY OR VILLAGE
	BOUNDARY LIMITS FIXED FOR SPECIAL AREAS AND OTHER UNINCORPORATED URBAN PLACES DELIMITED
	PUBLIC SERVICE FACILITIES
	POST OFFICE
	HIGHWAY GARAGE
	FIRE ENGINE HOUSE
	GARAGE OR RUBBISH DUMP
	SEWAGE DISPOSAL PLANT
	AUTO SALVAGE YARD
	TRANSFORMER STATION
	POWER PLANT
	POWER SUBSTATION
	BOILER STATION
	WATER SUPPLY, STAND PIPE, OR TANK
	RADIO STATION
	RADIO RANGE STATION
	MISCELLANEOUS
	FORT, ARMY CAMP, BARRACKS, OR OTHER
	MILITARY POST
	TRIANGULATION STATION
	BENCH MARK
	NATURAL FEATURES
	PROMINENT ELEVATION WITH NAME
	SINK OR DEPRESSION



**GENERAL HIGHWAY MAP
HARPER COUNTY
KANSAS**

PREPARED BY THE
**STATE HIGHWAY COMMISSION OF KANSAS
PLANNING AND RESEARCH DEPARTMENT**
IN COOPERATION WITH THE
**U. S. DEPARTMENT OF TRANSPORTATION
FEDERAL HIGHWAY ADMINISTRATION
BUREAU OF PUBLIC ROADS**



REINVENTORY COMPLETED 2-28-59
F.A. AND STATE SYSTEM REVISED TO 5-28-58