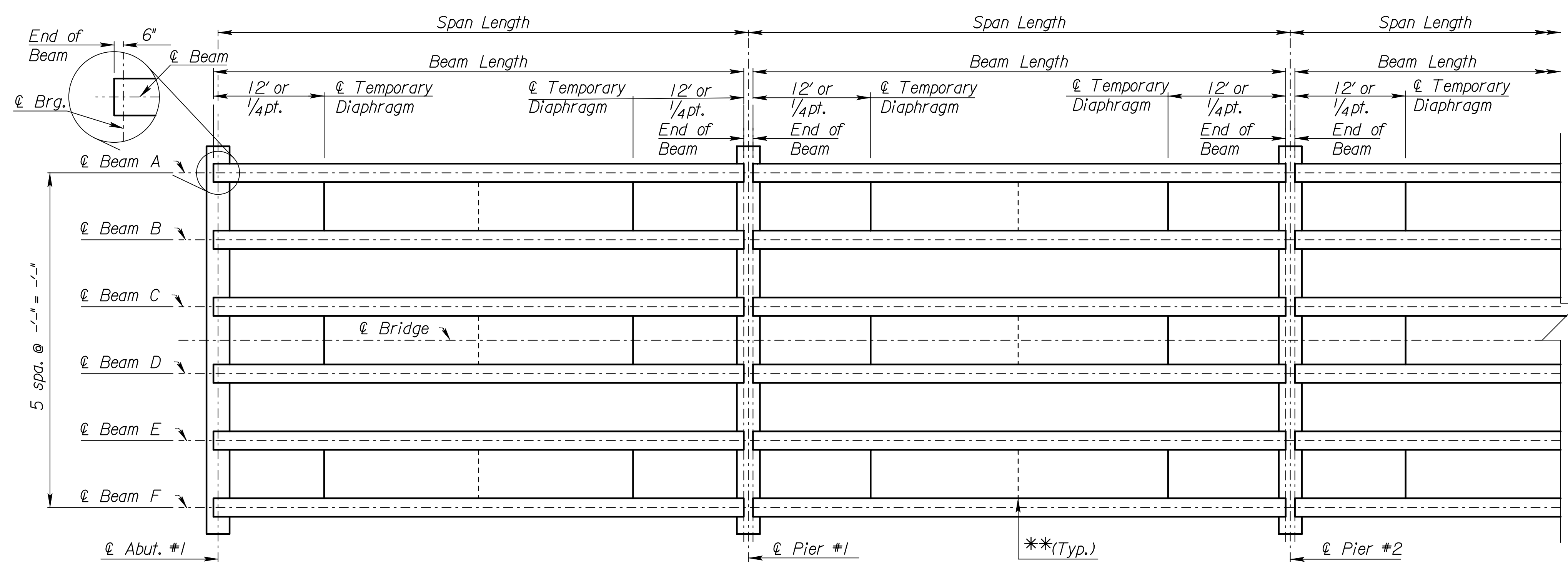


STATE	PROJECT NO.	YEAR	SHEET NO.	TOTAL SHEETS
KANSAS	Proj. No.	YEAR	0	0

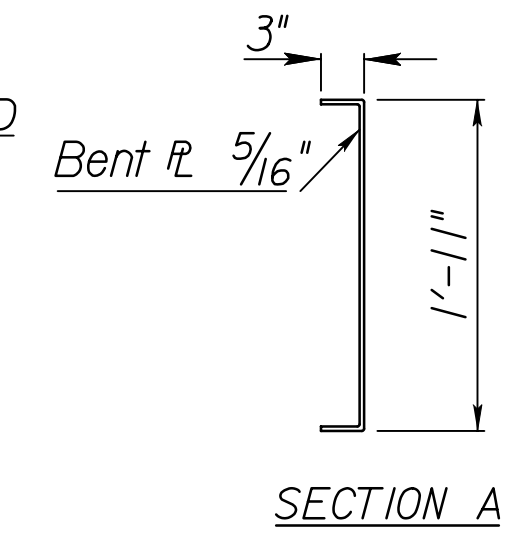
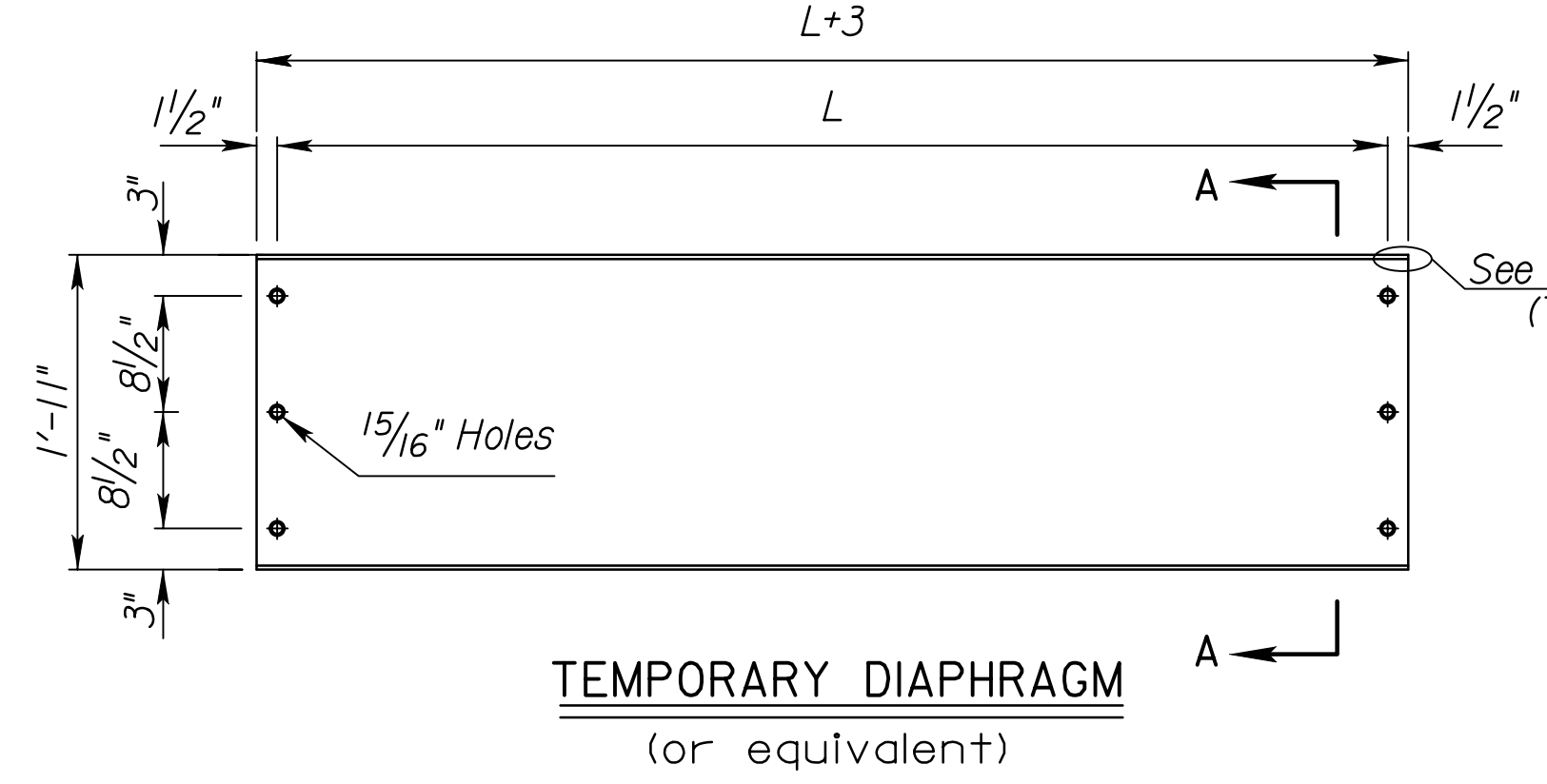
Purple color text/dimension/details are designer information to be adapted for each structure. Remove/modify as needed.



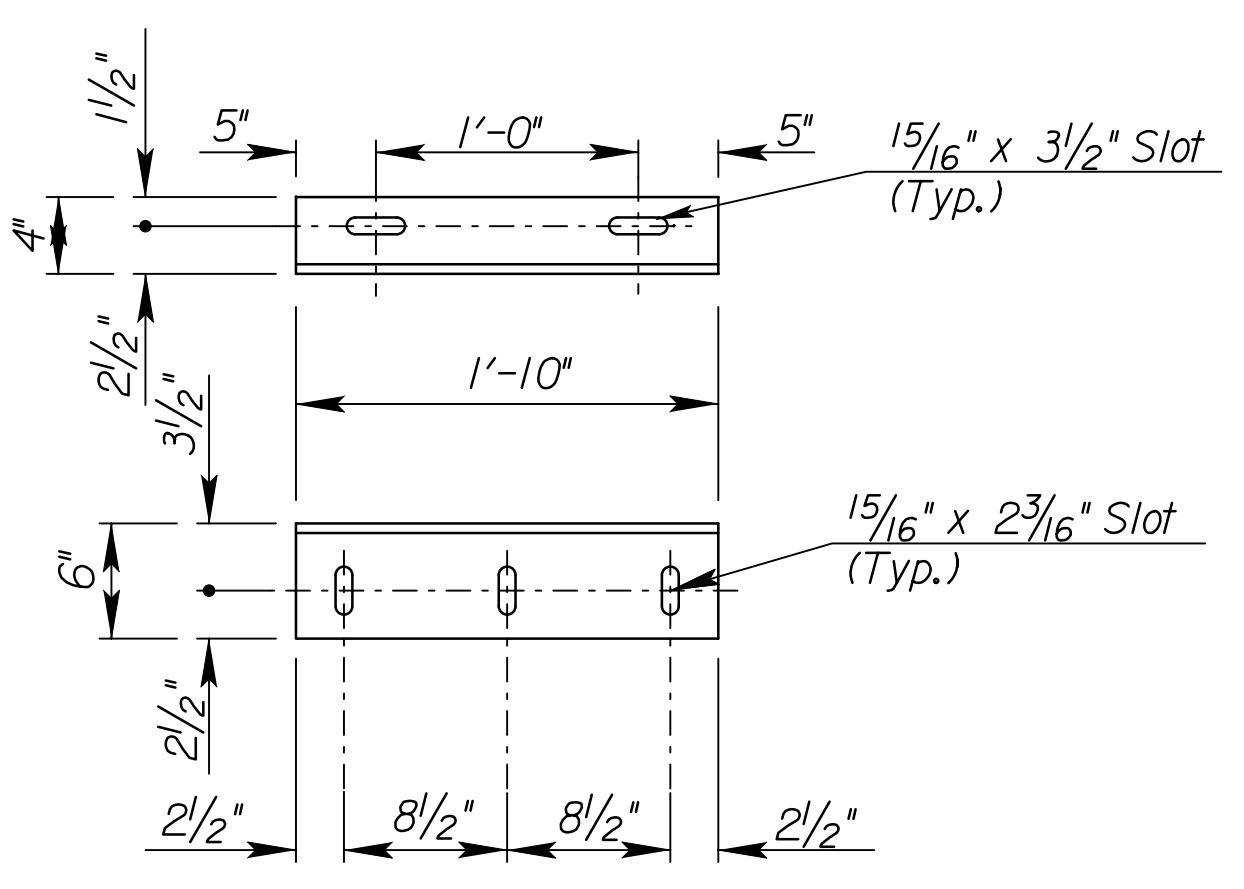
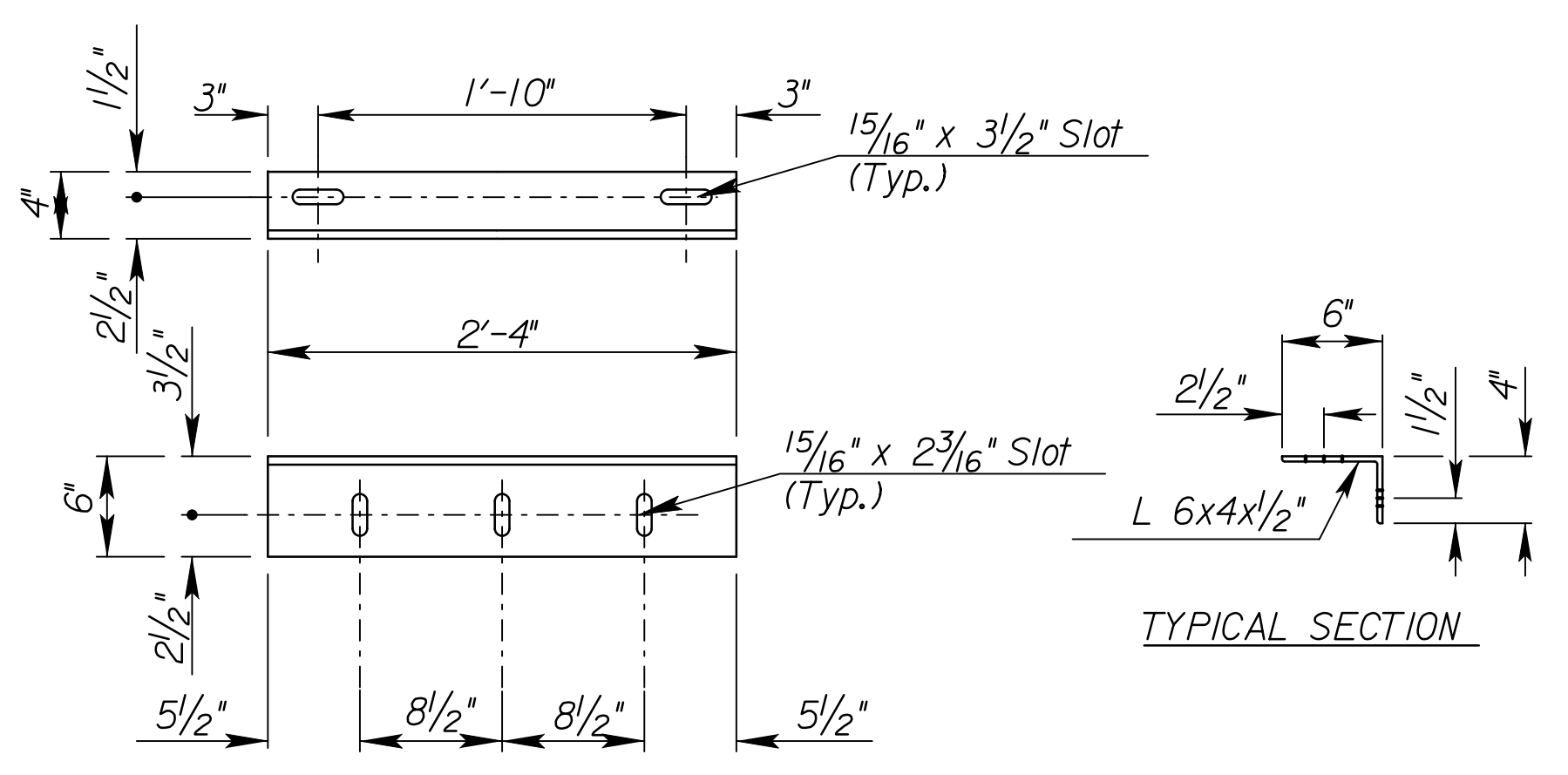
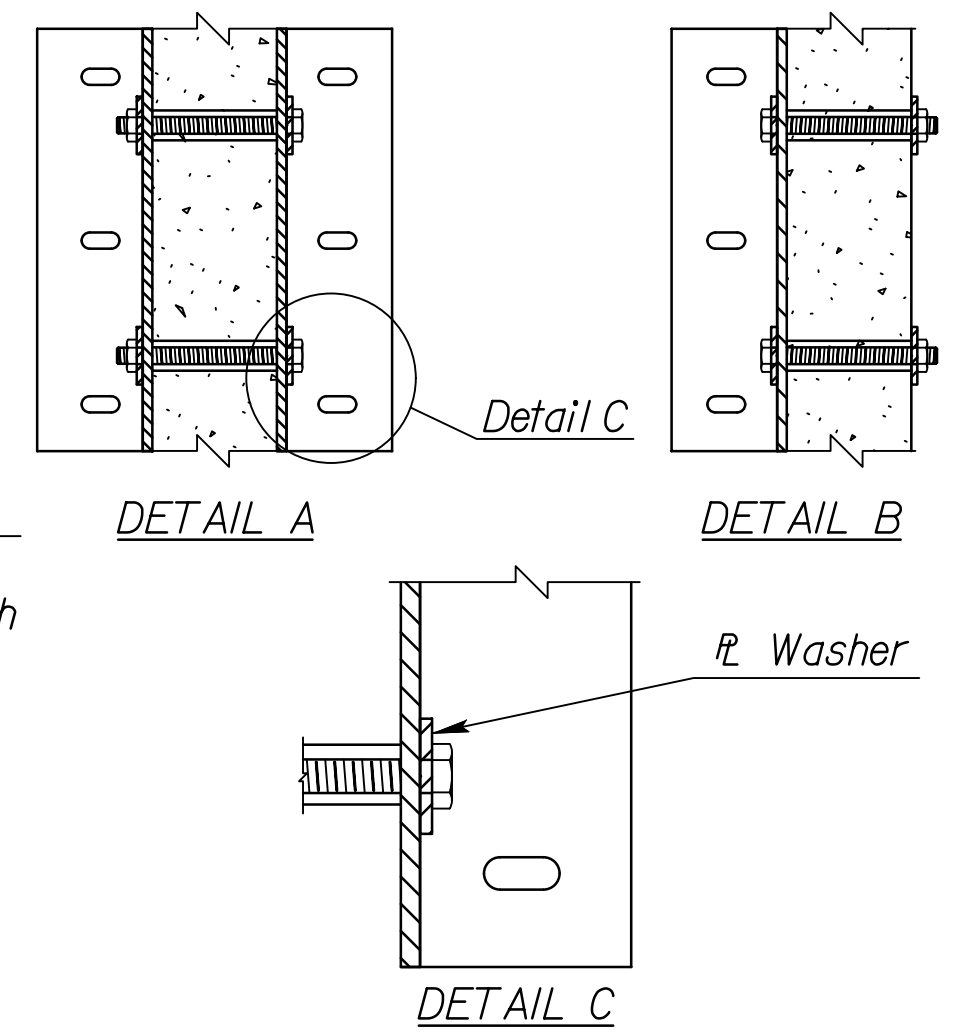
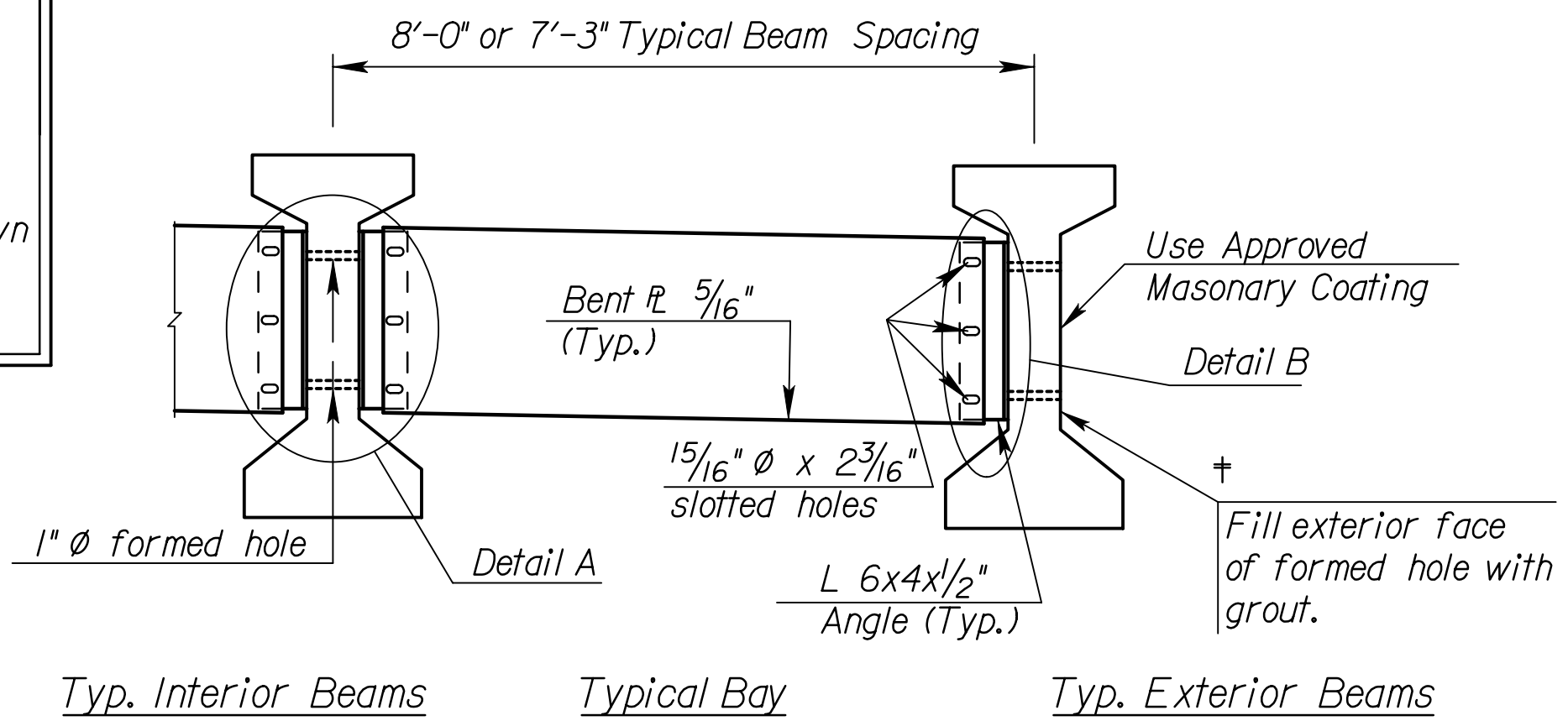
TEMPORARY DIAPHRAGMS: Use galvanized ASTM A709 Gr. 36 steel for all angles and bent plates for temporary diaphragms. All bolts, nuts, and washers for fasteners shall conform to the heavy hex structural requirements of ASTM A325, Type 1. Use hardened steel washers over any oversized holes. Use 5/16" plate washers over any slotted holes along with hardened washers under the turned elements. Use the turn-of-the-nut tightening method. DT's are not required. Install the temporary diaphragms, as shown in the details, prior to placing any superstructure concrete. Leave the temporary diaphragms in place until the concrete diaphragms and deck have cured. Remove the angles from the beams and fill the holes in the prestressed beams with an approved epoxy grout. The bent plate diaphragms, angles, nuts, bolts, and washers shall remain the property of the Contractor. Submit shop drawings of the temporary diaphragms to the KDOT Bridge Section for review and approval. The material, equipment, and labor necessary for the installation of the temporary diaphragms, including filling the bolt holes, shall not be paid for directly, but shall be subsidiary to the bid item "Prestressed Concrete Beams".

FRAMING PLAN

** Temp. Dia. Span Requirement	
Span	Required
< 40 Ft.	None
40 - 80 Ft.	1st & 3rd Quarter Points
80 - 120 Ft.	All Quarter Points
> 120 Ft.	Special Design



Note: It is intended that all bays have temp. diaphragms, however, as shown above, bridges with even numbers of beams may have diaphragms in every other bay with beams connected in pairs. Open holes are preferred and shown here, coil inserts may be used for heavily skewed or splayed beams.



2'-4" CONNECTION ANGLE
(-- each Req'd.)
(Weight = 37.8 Lb. each)

CONNECTION ANGLE DETAILS
(or equivalent)

1'-10" CONNECTION ANGLE
(-- each Req'd.)
(Weight = 29.7 Lb. each)

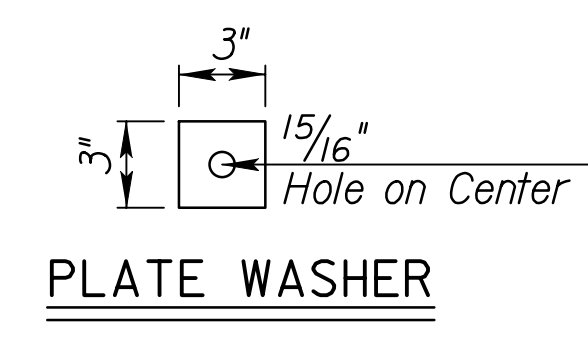
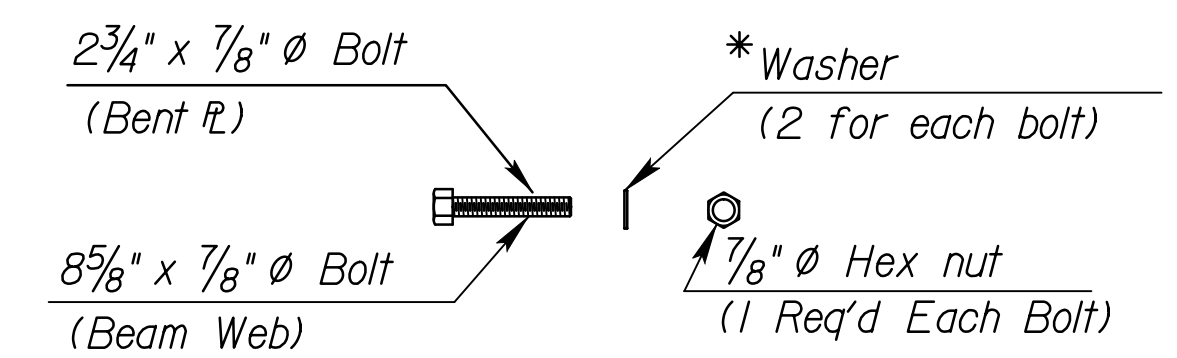


PLATE WASHER



FASTENER DETAILS

* Plate washers required for slotted holes.

Plotted By: rlong
File: C:\Documents and Settings\rlong\Desktop\3.5.2 PS Concrete\DWG\BR305.dwg
Plot Date: 8/21/2008

KANSAS DEPARTMENT OF TRANSPORTATION				
TEMPORARY DIAPHRAGM DETAILS (K3 and K4 Beams)				
SHEET NO.	OF	SCALE	APP'D	
DESIGNED	DETAIL	QUANTITIES	CADD	RAA
DESIGN CK.	DETAIL CK.	QUAN. CK.	CADD CK.	CADD CK.