



Visitor Resources & Kansas Travel Information Centers

Kansas has several Travel Information Centers throughout the state. Friendly travel counselors will give you helpful state information and direct you to points of regional interest. Clean restrooms, drinking water, free coffee, picnic areas and pet exercise areas are also available at some centers.

The following centers are open year-round except New Year's Day, Easter, Thanksgiving and Christmas. Hours 9 a.m. to 6 p.m. May 15 - Sept. 15, 9 a.m. to 5 p.m. Sept. 16 - May 14.

Belle Plaine 135 Kansas Turnpike at milepost 28. Accessible from both northbound and southbound lanes. Hours: 11:30 a.m. to 5:30 p.m. eastbound at milepost 7.

Kansas Road Conditions: Website: kandrive.org

Traveler Information Hot Line: Within Kansas Call 511. From anywhere in the US: Call 1-800-511-KDOT (5368). TTY: Hearing impaired users call 711.

Road Information:
Kansas Highway Patrol (785) 827-3065 & (785) 296-3102
Emergency (Fire, Police, 911)
Cellular Telephone Users: Highway Emergencies: 479

Kansas Turnpike Authority
(316) 280-4527
kturnpike.com
Cellular Telephone Users: KTRA

For More Information:

Kansas Department of Transportation
700 SW Harrison St.
2nd Floor West
Topeka, KS 66603-3745
(785) 296-3566
TTY (785) 296-3585

Kansas Department of Wildlife, Parks & Tourism
1230 S Kansas Ave., Rm. 200
Topeka, KS 66612-1327
(785) 296-2281
1-800-2-KANSAS
KSOutdoors.com
TravelKS.com

Kansas.gov provides online access to state and local government information and services. Kansas.gov

Sam Brownback, Kansas Governor

RECREATION AREAS
Kansas Department of Wildlife, Parks & Tourism
(800) 676-9911, KSOutdoors.com
- U.S. Army Corp of Engineers

Map	Name	Phone	Fishing	Hunting	Full Utility	Accessibility	Disc Golf	Swimming	Boating	Primitive Camping	Complimentary Campsites	Restrooms	Shower Buildings	Boat Rental	Boat Ramp	Interpretive	Scenic
F11	Big Hill Reservoir	(800) 336-9741															
D5	Cedar Bluff State Park and Reservoir	(785) 793-2028															
D8	Cherokee State Park and Reservoir	(316) 548-3694															
D7	Cherokee Botone Wildlife Area	(800) 793-3066															
F12	Chimney Rock National Monument	(800) 677-4981															
C11	Clinton Reservoir	(785) 843-7695															
C13	Climax State Park	(785) 842-8628															
D10	Council Grove Reservoir	(800) 797-6166															
F12	Crowford State Park at Fattington Lake	(800) 336-9741															
D11	Cross Timbers State Park at Toronto Lake	(800) 677-6213															
D12	December State Park at Melvern Lake	(785) 698-4026															
D9	El Dorado State Park	(316) 321-7180															
F11	Elk City Reservoir	(800) 336-9741															
F13	Elk City State Park	(800) 331-6256															
F10	Fall River Reservoir	(800) 677-6213															
F10	Fall River State Park	(800) 677-6213															
D11	Flint Hills National Wildlife Refuge	(800) 336-9553															
B7	Glen Elder State Park at Weonoda Lake	(785) 545-3345															
D12	Hillside Reservoir	(800) 793-4398															
D12	Hillside State Park	(800) 793-4397															
D11	John Redmond Reservoir	(316) 364-6613															
D8	Kanopolis Reservoir	(785) 548-3694															
D8	Kanopolis State Park	(785) 548-3694															
C11	Kaw River State Park	(785) 273-6740															
B6	Kirwin National Wildlife Refuge	(785) 543-9573															
B7	Levewell State Park and Reservoir	(785) 753-4771															
E13	Manassas des Cygnes National Wildlife Refuge	(913) 358-8866															
D9	Marion Reservoir	(800) 336-2640															
F14	Meadle State Park	(800) 677-6213															
D11	Melvorn Lake	(785) 549-3218															
D9	Milford Reservoir	(785) 238-9774															
C9	Milford State Park	(785) 238-3014															
C7	Mushroom Rock State Park	(785) 548-6656															
D11	Perry Reservoir	(785) 547-6144															
C11	Perry State Park	(785) 548-3448															
D11	Perona Reservoir	(785) 453-2920															
D11	Perona State Park	(785) 828-4633															
B5	Prarie Dog State Park at Keith Sebelius Lake	(785) 677-2963															
D12	Prarie Spirit Rail Trail State Park	(785) 448-9787															
B7	Quivira National Wildlife Refuge	(800) 449-2930															
E8	Sand Hills State Park	(316) 548-3694															
D3	Scott State Park and Lake	(800) 672-2081															
D10	Tallgrass Prairie National Preserve	(800) 672-2081															
D11	Toronto Lake	(800) 658-4445															
C10	Tuttle Creek Reservoir	(785) 539-6611															
C10	Tuttle Creek State Park	(785) 539-7941															
B5	Weauble State Park and Reservoir	(785) 426-6775															
C7	Wilson Reservoir	(785) 698-5561															
C7	Wilson State Park	(785) 698-6456															

Reference icons on map for location of Recreation Areas
The Kansas Department of Wildlife, Parks & Tourism and the U.S. Army Corp of Engineers often maintain recreation areas at the same lakes in Kansas. Separate permits and regulations may apply to these areas.

This is not a comprehensive list.
The Kansas Department of Wildlife, Parks & Tourism and the U.S. Army Corp of Engineers often maintain recreation areas at the same lakes in Kansas. Separate permits and regulations may apply to these areas.

There's no place like Kansas
Official State Transportation Map
2015-2016



There's No Place Like Kansas
TravelKS.com
For Free Distribution 1.800.2.Kansas

- Connect with us and experience for yourself **There's No Place Like Kansas!**
- TravelKS.com
 - Request a Travel Guide
 - Sign up for our e-news
 - Follow a Yellow Brick Road Trip or use our Trip Planner
 - Search our events calendar
 - Read blogger recommendations
- [f](#) /TravelKS
[t](#) @TravelKS
[v](#) /TravelKS
[i](#) /KansasTourism
[p](#) /TravelKS
- KSOutdoors.com**
 • Buy hunting and fishing licenses
 • Download hunting and fishing atlases and regulations
 • Review weekly fishing reports
 • Reserve a State Park cabin
 • Search our events calendar
- [f](#) /KDWP
[t](#) @KDWP
[v](#) /KDWPinfo

Tour the top-to-bottom renovated Kansas State Capitol
Following a comprehensive renovation, the Kansas State Capitol has been restored to the original architect's vision and enhanced with modern features. Enjoy the famous Winter and Curry murals, including *Tragic Prelude*, depicting abolitionist John Brown. If you don't lose your breath on the 286-step climb to the top of the dome, the 360-degree view will certainly take it away. Visit KSHS.org for tour information.

Kansas State Capitol, Topeka



Take a break from the Interstate
Experience Kansas up close and personal - diverse wildlife-viewing opportunities, charming small towns and breathtaking landscapes - by exploring Kansas' 11 scenic and historic byways, such as the Wetlands & Wildlife National Scenic Byway shown here. Learn more at KSByways.com.

Wetlands & Wildlife National Scenic Byway



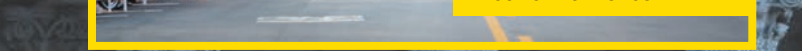
Cheney State Park



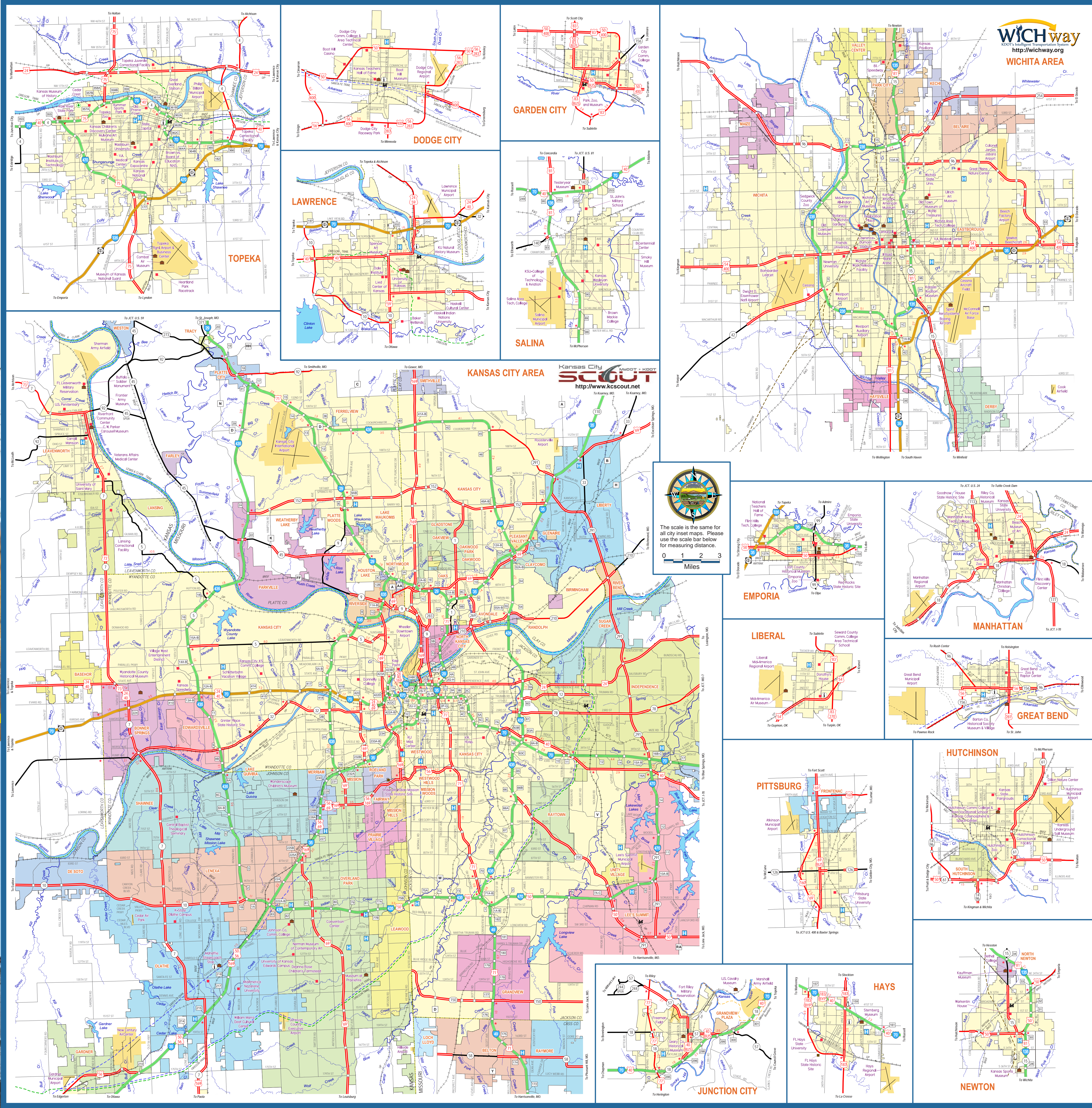
Flint Hills



Kaw dancer



Tour of Lawrence



WICHway
Wichita Area
<http://wichway.org>

GARDEN CITY

DODGE CITY

LAWRENCE

TOPEKA

SALINA

KANSAS CITY AREA
Kansas City Scout
<http://www.kcscout.net>



The scale is the same for all city inset maps. Please use the scale bar below for measuring distance.

EMPORIA

MANHATTAN

LIBERAL

GREAT BEND

HUTCHINSON

PITTSBURG

NORTH NEWTON

JUNCTION CITY

NEWTON

HAYS