

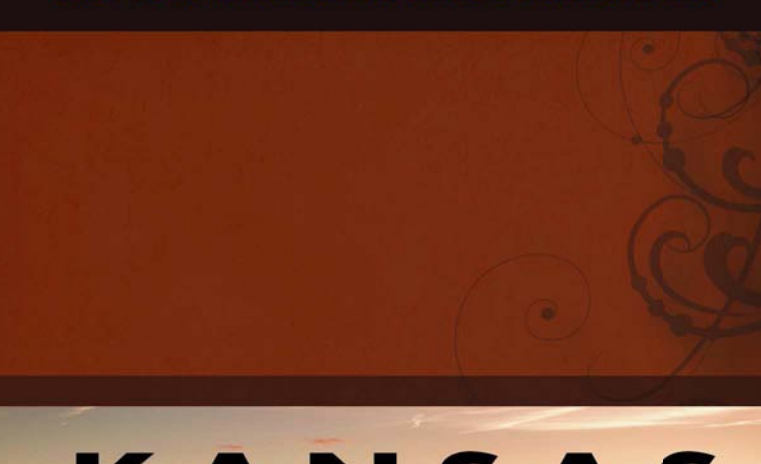


KANSAS ROAD CONDITIONS
 Web site: <http://11.kdot.org>
 Traveler Information Hot Line:
 (800) 455-4545
 Within Kansas: Call 511
 From anywhere in the US:
 Call 1-866-411-KDOT (5368)
 TTY (Hearing Impaired) users, call 711.
 The Kansas 511 Advanced Traveler Information System provides route-specific road conditions, weather, construction/tour and road closure information for the Kansas State Highway System and the Kansas Turnpike 24 hours per day.

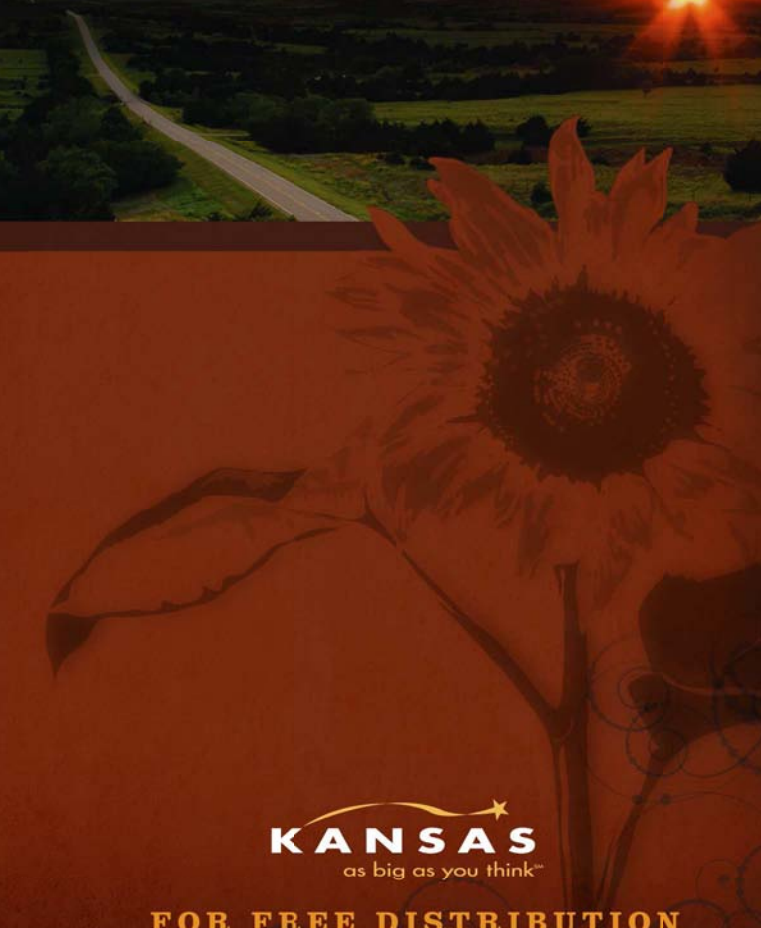


VISITOR RESOURCES
KANSAS TRAVEL INFORMATION CENTERS
 Kansas has several Travel Information Centers located throughout the state. Friendly travel counselors will give you helpful state information and direct you toward points of regional interest. Clean restrooms, drinking water, free coffee, picnic areas and pet exercise areas are also available at some centers.
 The following centers are open year-round except New Year's Day, Easter, Thanksgiving, and Christmas. Hours: 8 a.m. to 6 p.m. May 15 through September 15; 9 a.m. to 5 p.m. September 16 through May 14.
 Belle Plaine: 1-35 Kansas Turnpike at milepost 26. Accessible from both northbound and southbound lanes. Goodland: 170 eastbound at milepost 7.
 Kansas.gov provides online access to state and local government information and services. www.kansas.gov
 The State of Kansas is an Equal Opportunity Employer. View employment opportunities at www.jobs.ks.gov

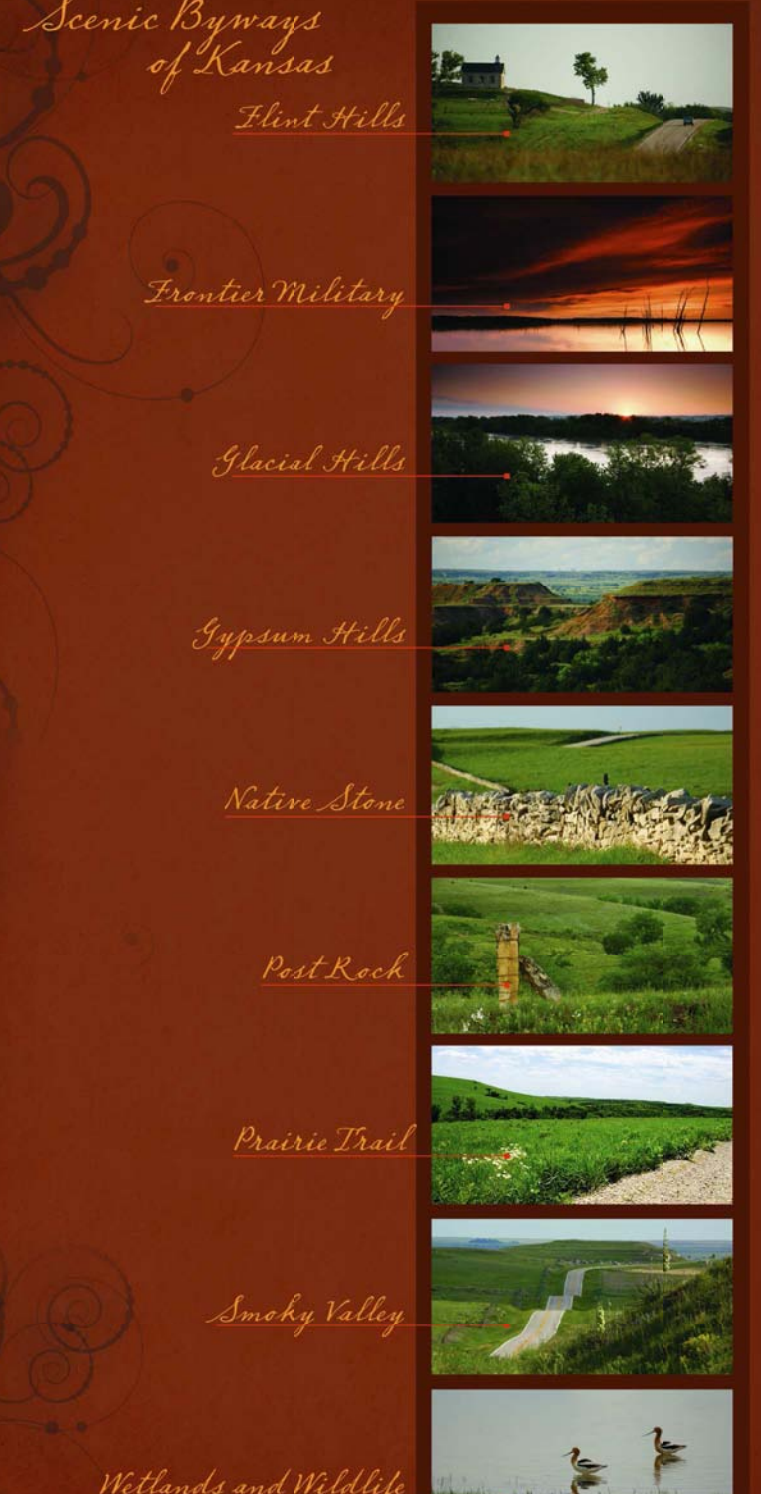
KANSAS
 2009-10 OFFICIAL STATE TRANSPORTATION MAP



KANSAS
 on big as you think



KANSAS
 on big as you think
 FOR FREE DISTRIBUTION



1-800-2KANSAS TravelKS.com

RECREATION AREAS

Kansas Wildlife and Parks
 (620) 672-9911, www.kdwp.state.ks.us

Map Name	Phone	Fishing	Hunting	Full Utility	Electricity	Water	Dump Station	Primitive Camping	Recreation Sites	Shelters	Meat Hatchery	Drinking Water	Trail	Equitation Trail	Historic Features	Recreation and Beach	Boating	Boat Ramp	Boat Ramp	Competition Dock	
M-1 Big Hill Lake	(620) 334-2741
D-5 Cedar Bluff State Park & Lake	(785) 724-3212
E-8 Chaney State Park & Lake	(316) 542-3644
D-7 Cheyenne National Grassland	(620) 793-8666
C-11 Clinton Lake	(785) 843-7665
C-10 Council Grove Lake	(620) 792-5195
F-12 Crawford State Park	(620) 362-3671
E-9 El Dorado Lake	(316) 321-9974
F-10 Elk City Lake	(620) 534-2741
F-11 Elk City State Park	(620) 331-6295
D-10 Fall River Lake	(620) 742-5195
F-10 Fall River State Park	(620) 637-2213
B-7 Glen Elder State Park, Wacoona Lake	(785) 843-3345
D-12 Hillside Lake	(913) 783-4366
D-11 Hillside State Park	(913) 783-4307
D-11 John Radmond Lake	(316) 364-8413
D-11 Flies Hills National Wildlife Refuge	(620) 392-5553
D-8 Kanopolis Lake	(785) 544-2294
D-8 Kanopolis State Park	(785) 544-2365
B-8 Kirwin National Wildlife Refuge	(785) 543-5673
B-7 Lowell State Park & Lake	(785) 724-4771
E-13 Marais des Cygnes National Wildlife Refuge	(913) 352-8956
D-9 Marion Lake	(620) 382-2101
F-4 McAlester State Park	(620) 873-2572
D-11 Eisenhower State Park	(785) 528-4102
C-9 Milford Lake	(785) 238-3714
D-9 Milford State Park	(785) 238-3074
C-11 Mushroom Rock State Park	(785) 544-2365
D-11 Perry Lake	(785) 597-5144
D-11 Perry State Park	(785) 246-3449
D-11 Ponoma Lake	(785) 453-2201
B-5 Prairie Dog State Park, Keith Sebelius Lake	(785) 828-4933
D-12 Prairie Spire Roll Trail	(785) 448-6767
E-7 Quivira National Wildlife Refuge	(620) 484-2393
E-6 Sand Hills State Park	(316) 542-3664
D-10 Scott State Park & Lake	(620) 872-2061
D-10 Tallgrass Prairie National Preserve	(620) 273-8494
E-11 Toronto Lake	(620) 658-4445
D-11 Crown Timbers State Park	(620) 637-2213
D-11 Tuttle Creek Lake	(785) 539-8511
D-11 Tuttle Creek State Park	(785) 539-7941
C-5 Wakarusa State Park & Lake	(785) 455-8775
C-7 Wilson Lake	(785) 658-2551
C-7 Wilson State Park	(785) 658-2465

Reference icons on map for location of Recreation Areas
 The Kansas Department of Wildlife & Parks and the U.S. Corps of Engineers often both maintain recreation areas at the same lakes in Kansas. Separate permits and regulations may apply to those areas.
 This is not a comprehensive list.

Scenic Byways of Kansas

Kansas is full of amazing beauty and diverse points of interest, and the best way to experience it all is by driving our scenic byways. There are nine in total, and two of them are officially designated National Scenic Byways. Each one holds a fascinating history, an amazing story and an abundance of activities to enjoy along the way. For more information about Kansas travel and scenic byways visit www.TravelKS.com.

Flint Hills

Across the Grassland Sea
 This famed route showcases the continent's largest remaining tract of tallgrass prairie, and features 47 miles of rolling hills, historic sites, waving grasses and wildlife. (D-10)



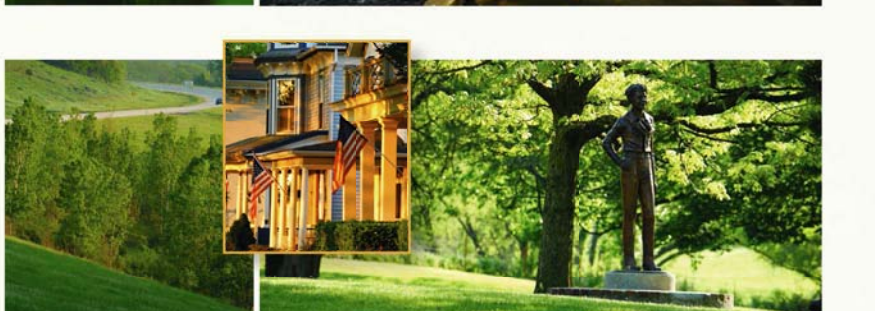
Frontier Military

Marching Through History
 Discover Kansas' important role in history along this 167-mile route, which approximates the old military trail used by the Army to transport troops and supplies. (C-12)



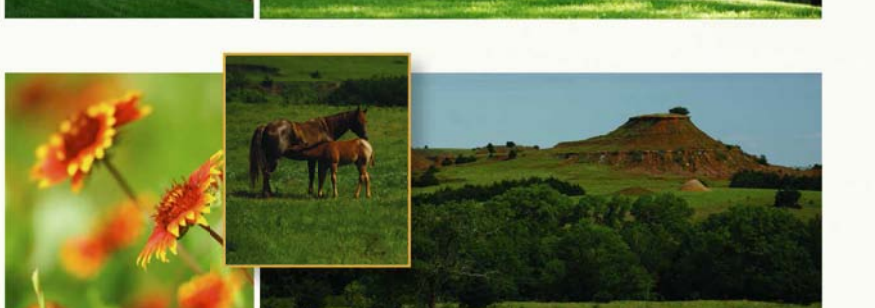
Glacial Hills

The Pioneering Spirit
 See some of the oldest communities in Kansas on this 63-mile byway, as well as a variety of wooded hills, rock-strewn soil and valleys with streams meandered by receding glaciers. (B-12)



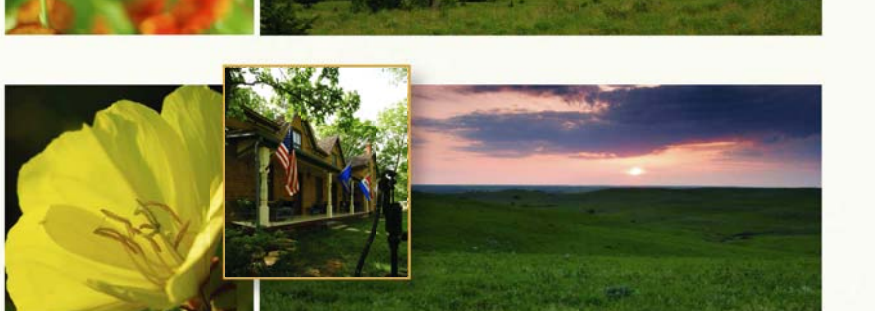
Gypsum Hills

A Colorful Heritage
 "Picturesque" describes this unique 42-mile adventure between Medicine Lodge and Coloway, thanks to the rolling farmland, midgrass prairie and gypsum-capped shale mesas. (F-4)



Native Stone

A Slice of American Landscape
 This winding 48-mile byway cuts through the eastern Flint Hills, and offers a look at rural life in Kansas through an assortment of limestone fences, bridges and buildings. (C-10)



Post Rock

Nature's Roller Coaster
 Enjoy spectacular views of Wilson Lake, as well as the prairies where buffalo once roamed, on this 18-mile route. It's named for the native limestone fence posts in the area. (C-7)



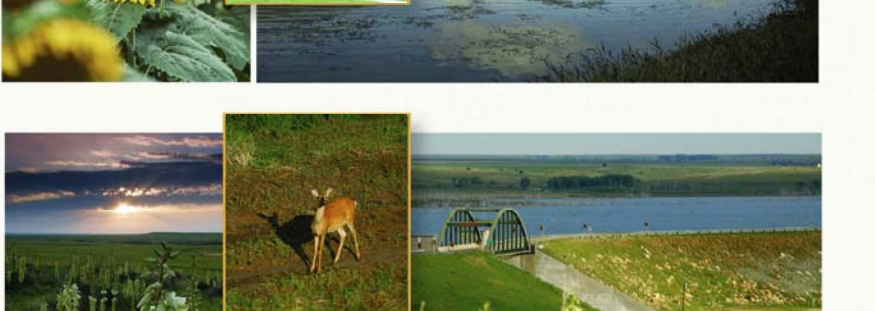
Prairie Trail

A Trail of Adventure
 Experience everything from Swedish culture to outdoor recreation opportunities to spectacular nature on this 56-mile byway through McPherson and Ellsworth counties. (D-8)



Smoky Valley

Into the Valley
 Grazing cattle, picturesque windmills and native wildflowers can be enjoyed on this 90-mile route through the Smoky Hill River Valley in west central Kansas. (C-5)



Wetlands & Wildlife

Time to Fly
 Anchoring two of the world's largest wetland ecosystems, this 76-mile byway offers a wealth of incredible nature-based activities from wildlife viewing to bird watching. (D-6)



We look forward to seeing you on the road!
ksbyways.org

