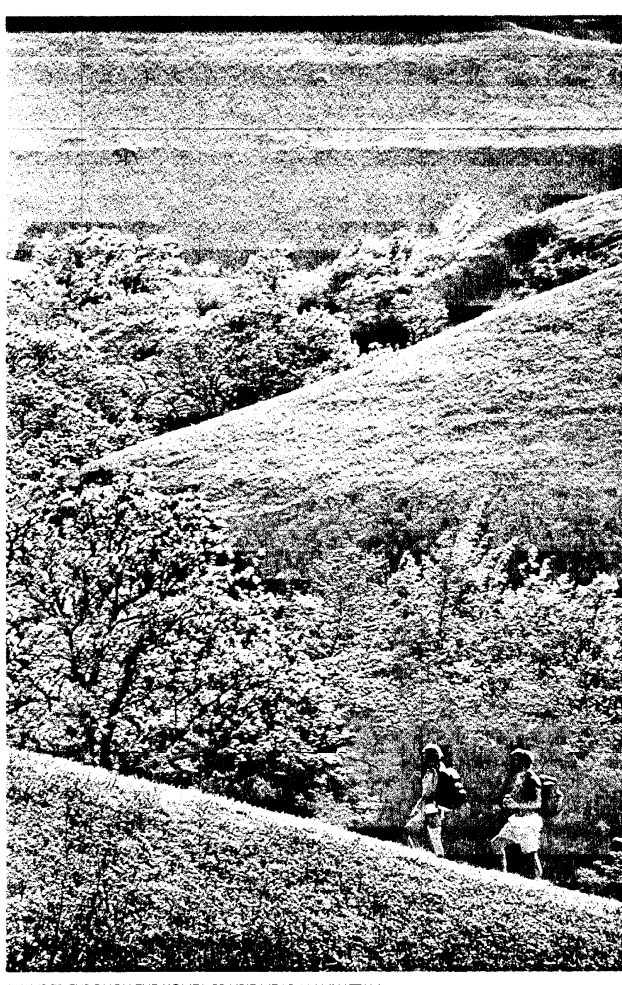


L I M P L Y W O N D E R F U L



THIS YEAR, GET BACK TO BASICS AND BACK TO SIMPLE PLEASURES. FIND KANSAS' WONDERFUL WIDE OPEN SCENERY, OUTDOOR ADVENTURES, WILD WEST HISTORY, FESTIVALS, HISTORIC SITES AND A BUNDLE OF OTHER SIMPLY WONDERFUL TREASURES.

TAKE THE LONG WAY HOME

Wander through historic small towns. Cruise through the bustle of vibrant cities and cosmopolitan suburban communities. Wind along scenic country roads in search of old barns, forgotten ghost towns and hidden treasures. And always expect a friendly wave from people you meet along your way.

Travel back in time and discover Kansas' rich history. If you "Like Ike," don't miss the Eisenhower Center in Abilene. See the home, library and final resting place of the former president and five-star general. For a look at the past, stop at the Kansas History Center and State Capitol building in Topeka, and the NCAA Hall of Champions in Overland Park. And take a memorable voyage into outer space at the Kansas Cosmosphere and Space Center in Hutchinson. There are many other wonderful history and art museums across Kansas. Love beautiful scenery? The Flint Hills and the Konza Prairie are places where you can still wander and explore the magnificent grassland prairies, unchanged since the days when covered wagons roled across the plains. In northwest Kansas, find the most unique rock formations around at Monument Rocks National Landmark near Oakley and Castle Rock southeast of Quinter. While you're traveling across Kansas, you'll always find friendly and affordable accommodations. Whether it's a comfortable leather inn in a honey-moon suite, you'll find the right place to stay.

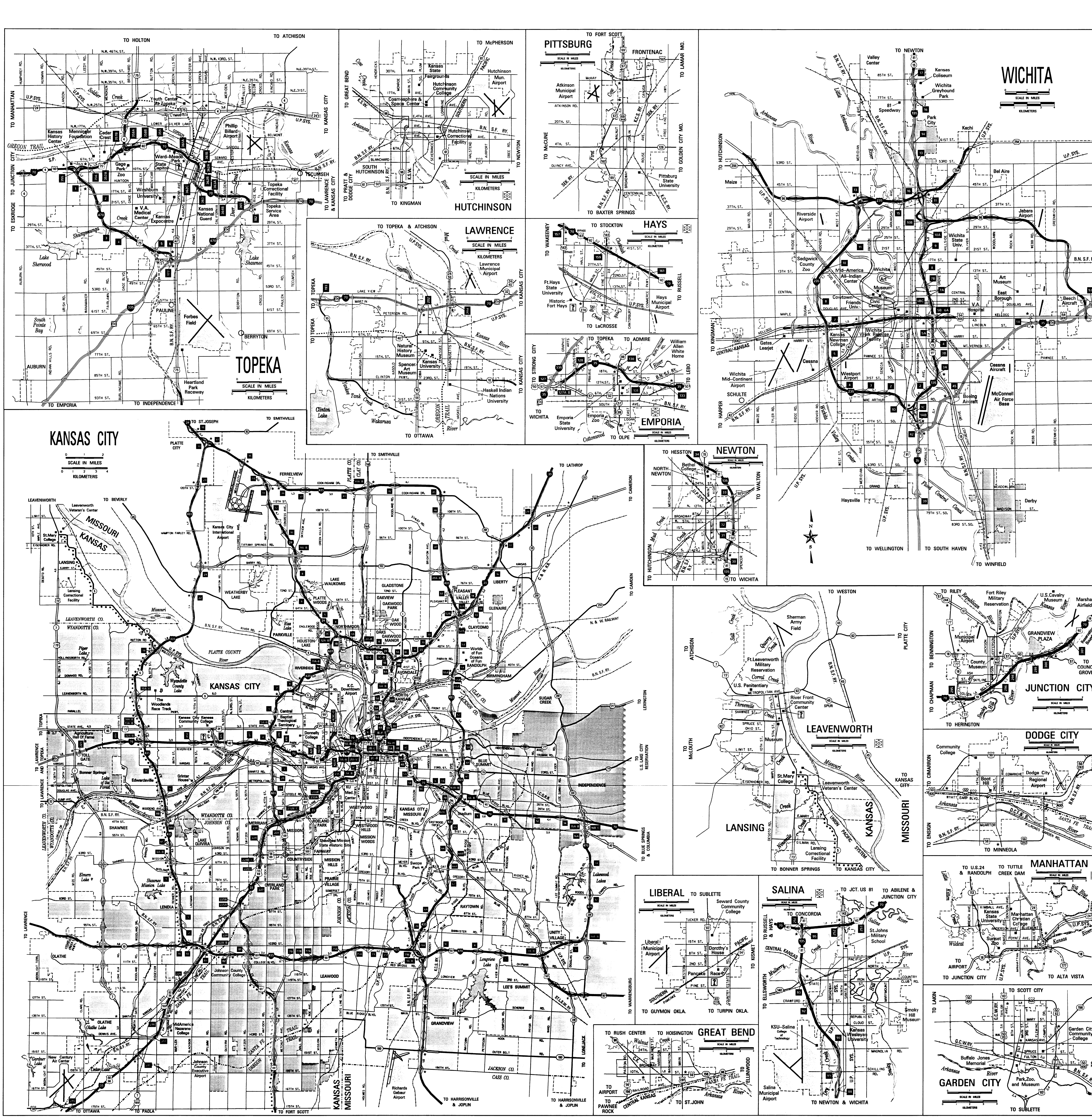
GO OUT & PLAY

Ready to shop? In Kansas you'll discover a treasure of out-of-the-way antique shops, unique boutiques, large shopping malls and more than 100 outlet shops. Go ahead and shop until you drop. Then relax with some first-class theatre and live entertainment. The New Theatre Restaurant in Overland Park, Sandstone Amphitheatre in Bonner Springs, the Lied Center in Lawrence and the Topeka Performing Arts Center are just a few great choices. The Kansas State Fair in Hutchinson is full of excitement and fun for the whole family. And it's a good bet you'll find plenty of thrills with Indian Gaming in northeast Kansas and greyhound racing in Bonner Springs and Wichita. Watch national auto racing events, world class Heartland Park Topeka. And animal lovers won't want to miss one of the finest zoos in the Midwest. At the Sedgewick County Zoo in Wichita, see more than 1,000 animals roam their native habitat on 212 landscaped acres. It's only natural that you can bike, hike, jog, camp at scenic lakes and parks throughout Kansas. With more than 200 lakes, 85,000 acres, 15,000 campsites and many hiking, biking and nature trails, there are plenty of opportunities to get out and play. For golfers, variety is the name of the game. Let yourself go at Kansas celebrations, county fairs, events, expos, festivals, fairs, carnivals, powwows, races and much, much more. To get a full listing of Kansas festivals and events, call for your Kansas Travel & Event Guide at 1-800-2-KANSAS.

PLAY HOOKY FROM THE 20TH CENTURY

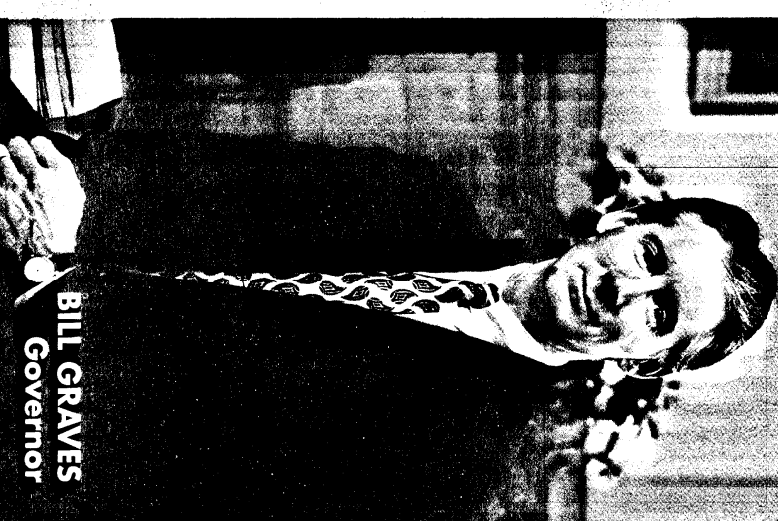
After the Civil War, railroads rolled into Kansas and made way for the great Texas longhorn cattle drives and the birth of the Wild West. Notorious "cattowns" like Dodge City, Abilene and Wichita thrived. Wild West legends like Wild Bill Hickok, Bat Masterson and Wyatt Earp all tried to keep the peace. Capture the 1870s heyday of rip-roarin', gun-slingin' Wild West adventure at Dodge City's Boot Hill Museum and Frontier Street complex and Wichita's Old Cowntown Museum. In Kansas you can still wander and explore some of America's most nostalgic trails. It's the only place you'll find the adventure of the Salina, Fe, Oregon and Chisholm trails. You can also explore the Smoky Hill Trail and the Pony Express route. So saddle up and hit the trail in Kansas. Round up the troops and rendezvous with history at the Kansas Frontier Forts. Relive the frontier struggle on the rugged prairie. The forts open to visitors include: Fort Dodge, Fort Hays, Fort Larned National Historic Site, Fort Leavenworth, Fort Riley, Fort Scott National Historic Site, Fort Wallace and Fort Harker.

CALL FOR YOUR FREE KANSAS FRONTIER FORTS & TRAILS



FOR ADDITIONAL INFORMATION:
 Kansas Department of Transportation
 915 Hamilton, 7th Floor
 Topeka, KS 66612-1588
 (913) 296-5356
Kansas Department of Commerce & Housing
 Kansas Department of Development
 700 West
 Topeka, KS 66606-5712
 (913) 296-3009 TTY (913) 296-3487
Kansas Department of Wildlife & Parks
 906 SW Jackson, 5th Floor
 Topeka, KS 66606-1233
 (913) 296-2275

IMPORTANT INFORMATION:
 Highway Plan/Itinerary: (913) 296-5372
 Emergency (acc, help): 911
 Local Information: 411
CALL TOLL TELEPHONE SERVICES
 Highway Information/Kansas Highway Patrol: 47
KANSAS TRANSPORTATION
 1-800-885-ROAD
 For 24-hour recorded road conditions information on Kansas highways, call 1-800-885-ROAD. In Topeka, call 291-3000. This information is available on TTY through the Kansas Relay Center at 1-800-997-7272. National Motorist Reliance is a national Motorist Reliance Authorized Agent.



KANSAS TRAVEL INFORMATION CENTERS

Kansas operates 11 Information Centers where you can get vital state information and direct you toward points of regional interest. Call for more information, including hours of operation, at 1-800-885-ROAD. For more information, call 1-800-885-ROAD.

OLATH: 133 East 2nd, East on 10th Street
 Topeka, KS 66606-1588
TOPEKA: State Capitol Building, first floor
 Information Booth, 10th and Harrison
 Topeka, KS 66606-1588
WICHITA: 509 W. Santa Fe, Santa Fe Plaza, 509 W. Santa Fe
 Topeka, KS 66606-1588

Other Information Centers:
 Abilene, KS: 15th and Harrison
 Bonner Springs, KS: 15th and Harrison
 Dodge City, KS: 15th and Harrison
 Emporia, KS: 15th and Harrison
 Garden City, KS: 15th and Harrison
 Hays, KS: 15th and Harrison
 Junction City, KS: 15th and Harrison
 Lawrence, KS: 15th and Harrison
 Leavenworth, KS: 15th and Harrison
 Manhattan, KS: 15th and Harrison
 Newton, KS: 15th and Harrison
 Overland Park, KS: 15th and Harrison
 Shawnee, KS: 15th and Harrison
 Topeka, KS: 15th and Harrison
 Wichita, KS: 15th and Harrison

