



178c
OFFICIAL
**Transportation
Map**
For Free Distribution

Build Your Own Tour

Attractions

Castle Rock and Chalk Pyramids (C-4) Cove County - tower majestically over the granite in naturally carved sandstone.

El Cuartelejo (D-3) Scott City - inhabited by ancient Indians and was later the first white settlement in Kansas.

The Windsor Hotel (E-3) Garden City - 1886 Waldorf of the Prairies' hotel.

Dorothy's House (E-9) Liberal - recreates Dorothy's home as described in *The Wizard of Oz*.

Dalton Gang Hideout (F-4) Meade - tour headquarters, gateway tunnel and museum.

Front Street (E-4) Dodge City - West Wild West replica. Includes Long Branch Saloon and western variety show.

World's Largest Hand Dug Well (F-6) Greensburg - 109 feet deep and was dug in 1885.

Old Fort Hays (C-6) Hays - preserved frontier fort.

Cathedral of the Plains (C-6) Victoria - stands as one of the turn-of-the-century's great architectural triumphs.

Fort Larned National Historic Site (E-6) Larned - protected the Santa Fe Trail until 1878.

Santa Fe Trail Center (E-6) Larned - museum of Spanish, Indian, pioneer and railroad activities.

Cary Nation Home (F-7) Medicine Lodge - home of stormy temperance leader.

Mushroom Rocks (D-7) Ellsworth - landmark rock formations.

Garden of Eden (C-9) Lucas - unique concrete masterpiece.

Continental Sculpture Hall (E-6) Osborne - features over 1400 unique sculptures of American history.

Brown Grand Opera House (B-8) Concordia - restores the grandeur of 1906 entertainment with original woodwork and furnishings.

Rock City (C-8) Minneapolis - unworldly, smooth, large sandstone formations.

Eisenhower Center (C-9) Abilene - President's boyhood home, museum, library and burial site.

Greyhound Hall of Fame (C-9) Abilene - includes history, exhibits, and a theater.

Old Abilene Town (C-9) Abilene - recreated wild cowtown.

Indian Burial Pit (C-8) Salina - prehistoric burial site for more than 140 Indians.

Brookville Hotel (D-8) Brookville - historic hotel and nationally famous dining establishment.

Rigger Sandman Memorial Gallery (D-8) Lindsborg - displays works of internationally praised Swedish-American painter.

Coronado Heights (D-9) Lindsborg - Coronado once camped here in search of the Seven Cities of Gold.

Kansas Cosmothes and Space Discovery Center (E-8) Hutchinson - 70 mm Omnimax projection system and over 1400 space artifacts on display.

Fun Valley (E-8) Hutchinson - 350 acres outdoor family recreation complex.

Watersville Opera House (B-9) Watersville - hosts a full summer theatre season.

Hollenberg Pony Express Station (E-9) Gray - nation's only remaining unaltered Pony Express Station.

Fort Markley (B-10) Seneca - authentically restored frontier village.

Gage Park Zoo and Rainforest (C-11) Topeka - over 400 animals and indoor Tropical Rain Forest.

State Capitol (C-11) Topeka - tour six floors of the statehouse and 50-acre grounds.

EFA Reinisch Rose Garden (C-11) Topeka - over 400 rose varieties in more than 7000 plants.

Amelia Earhart's Home (B-11) Atchison - historic items from this famous aviatrix's life.

Fort Leavenworth (C-12) Leavenworth - largest collection of horse drawn vehicles in the world.

Agricultural Hall of Fame (C-12) Bonner Springs - honors people and events that have shaped American agriculture.

Old Shawnee Town (C-12) Shawnee - Kansas' first jail, cabin, and other original buildings.

Vassar Junction (B-11) Vassar - Vassar Shoreline restaurant and Playhouse summer theater.

Quayle Rare Bible Collection (D-12) Baldwin City - ancient tablets, scrolls, leaves and Bibles.

John Brown Memorial Park (D-12) Osawatimie - a log cabin museum and "The Old Stone Church" dedicated in 1861.

Fort Scott National Historic Site (E-12) Fort Scott - authentically restored military post of 1842.

General Frederick Funston Home (E-11) Iola - relics from the life of this amazing explorer and soldier.

Little House on the Prairie (F-11) Independence - restored log cabin on the actual site of the original Laura Ingalls Wilder's "Little House on the Prairie."

Ralph Mitchell Zoo (F-11) Independence - over 50 species, plus a beautiful park and playground.

Brown Mansion (C-11) Coffeyville - authentically furnished grand old mansion and museum of early 1900's.

William Allen White Memorial Sculpture (B-10) Emporia - located in Peter Pan Park this sculpture honors the famous editor.

Historic Trails

Santa Fe Trail - opened the Great Southwest. Extends across the state roughly paralleling U.S. Hwy. 86.

Chisholm Trail - famous cattle drive trail. Over one million Texas cattle were driven to the great shipping center of Abilene.

Oregon Trail - followed the south bank of the Kansas River and crossed the river where Topeka is now located.

Smoky Hill or Butterfield Overland Dispatch - the quietest route to the Denver goldfields that were discovered in 1859.

Pony Express Route - segment of the trail used by Pony Express riders to relay mail from St. Joseph, Missouri, to Sacramento, California.

Scenic Trails & Rides

Gypsum Hills Trail Rides (F-7) Medicine Lodge - scenic canyons, mesa and buttes.

Hawthorne Ranch Trail Rides (E-10) Emporia - scenic 1 1/2 day pioneer adventure by wagon train.

William Allen White Memorial Self Guided Tour (B-10) Emporia - walking tour to landmarks and memorabilia of this Pulitzer Prize winner.

Platt Hills Scenic Tours (F-11) Paxico - buffalo herd, a century-old home, a pioneer village and prairie scenery.

Prepared by Kansas Department of Transportation, Bureau of Transportation Planning
Kansas Department of Economic Development, Travel and Tourism Division

Museums

Indian Raid Museum (B-4) Oberlin - replicas of the Indian raid in Kansas.

High Plains Museum (B-2) Goodland - frontier relics and the world's first helicopter.

Fort Wallace Museum (C-2) Wallace - recreates the Dalton raid on two Coffeyville banks in 1892.

Booth Hill Museum (E-4) Dodge City - a notorious collection of graves, guns and western relics.

Barbed Wire Museum (D-6) La Crosse - over 500 specimens of barbed wire and related items.

Pioneer Adobe House & Museum (D-9) Hillsboro - original dwelling built by Menomotte Indians in the 1870's.

Norman No. 1 Oil Well Museum (F-11) Neodesha - replica of the first successful oil well west of the Mississippi River.

Old Mill Museum (D-8) Lindsborg - old river mill and exhibits.

Menomotte Heritage Complex (E-8) Goessel - three-building museum conveying the art and spirit of Menomotte life.

Kansas Health Museum (E-8) Halstead - human body described in 21 exhibits.

Edwin A. Ulrich Museum of Art (F-9) Wichita - features American art, and a 82-by-28-foot Miro mosaic.

Cherokee Strip Living Museum (G-9) Arkansas City - history of the Cherokee Strip.

Kaw Methodist Mission and Museum (D-10) Council Grove - first Kansas school for Indians and pioneer children.

U.S. Cavalry Museum (C-8) Fort Riley - displays the army's role in taming the West.

Koester Museum (B-9) Marysville - 1876 grandly preserved home.

Kansas State Historical Society Museum (C-11) Topeka - largest collection of Kansas' artifacts.

Combat Air Museum (C-11) Topeka - rare collection of World War II aircraft.

Spencer Art Museum (C-12) Lawrence - only comprehensive art museum in Kansas, has 7 permanent galleries and 3 galleries of changing exhibits.

Museum of Natural History (C-12) Lawrence - displays U.S. Cavalry horse, Comanche, the only survivor of the Battle of the Little Bighorn.

Old Castle Museum Complex (D-12) Baldwin City - three historical buildings, including a Santa Fe Trail museum.

Old Depot Museum (D-12) Ottawa - wide array of exhibits (Civil War to NASA).

Maria Dea Cygnus Museum (E-12) Pleasanton - restored buildings and artifacts from the turbulent "Bleeding Kansas" days.

State Parks & Lakes

Cedar Bluff (C-3), 23 miles SE of Wakeeney on K-147.

Cheney (F-9), 20 miles NW of Wichita on K-53.

Clinton (C-12), 4 miles W of Lawrence on K-57.

El Dorado (E-9), 5 miles E of El Dorado on K-177.

Elk City (F-11), 7 miles N of Independence on US-169.

Fall River (F-11), 17 miles NW of Fredonia on K-96.

Glen Elder (B-7), 10 miles W of Beloit on US-24.

Kanopolis (D-7), 21 miles SE of Ellsworth on K-141.

Lowevell (F-11), 15 miles NE of Mankato on K-14.

Meads (F-4), 13 miles SW of Meade on K-368.

Prairie Dog (B-4), 3 miles W of Norton on US-36.

Sand Hills (E-8), 3 miles NE of Hutchinson.

Scott (D-3), 12 miles N of Scott City on K-95.

Toronto (E-11), 17 miles SW of Yates Center on K-105.

Tuttle Creek (B-10), 5 miles N of Manhattan on US-24.

Webster (B-5), 8 miles W of Stockton on US-24.

Wilson (C-7), 8 miles N of Wilson on K-222.

Historic Trails

Santa Fe Trail - opened the Great Southwest. Extends across the state roughly paralleling U.S. Hwy. 86.

Chisholm Trail - famous cattle drive trail. Over one million Texas cattle were driven to the great shipping center of Abilene.

Oregon Trail - followed the south bank of the Kansas River and crossed the river where Topeka is now located.

Smoky Hill or Butterfield Overland Dispatch - the quietest route to the Denver goldfields that were discovered in 1859.

Pony Express Route - segment of the trail used by Pony Express riders to relay mail from St. Joseph, Missouri, to Sacramento, California.

Scenic Trails & Rides

Gypsum Hills Trail Rides (F-7) Medicine Lodge - scenic canyons, mesa and buttes.

Hawthorne Ranch Trail Rides (E-10) Emporia - scenic 1 1/2 day pioneer adventure by wagon train.

William Allen White Memorial Self Guided Tour (B-10) Emporia - walking tour to landmarks and memorabilia of this Pulitzer Prize winner.

Platt Hills Scenic Tours (F-11) Paxico - buffalo herd, a century-old home, a pioneer village and prairie scenery.

Museums

Indian Raid Museum (B-4) Oberlin - replicas of the Indian raid in Kansas.

High Plains Museum (B-2) Goodland - frontier relics and the world's first helicopter.

Fort Wallace Museum (C-2) Wallace - recreates the Dalton raid on two Coffeyville banks in 1892.

Booth Hill Museum (E-4) Dodge City - a notorious collection of graves, guns and western relics.

Barbed Wire Museum (D-6) La Crosse - over 500 specimens of barbed wire and related items.

Pioneer Adobe House & Museum (D-9) Hillsboro - original dwelling built by Menomotte Indians in the 1870's.

Norman No. 1 Oil Well Museum (F-11) Neodesha - replica of the first successful oil well west of the Mississippi River.

Old Mill Museum (D-8) Lindsborg - old river mill and exhibits.

Menomotte Heritage Complex (E-8) Goessel - three-building museum conveying the art and spirit of Menomotte life.

Kansas Health Museum (E-8) Halstead - human body described in 21 exhibits.

Edwin A. Ulrich Museum of Art (F-9) Wichita - features American art, and a 82-by-28-foot Miro mosaic.

Cherokee Strip Living Museum (G-9) Arkansas City - history of the Cherokee Strip.

Kaw Methodist Mission and Museum (D-10) Council Grove - first Kansas school for Indians and pioneer children.

U.S. Cavalry Museum (C-8) Fort Riley - displays the army's role in taming the West.

Koester Museum (B-9) Marysville - 1876 grandly preserved home.

Kansas State Historical Society Museum (C-11) Topeka - largest collection of Kansas' artifacts.

Combat Air Museum (C-11) Topeka - rare collection of World War II aircraft.

Spencer Art Museum (C-12) Lawrence - only comprehensive art museum in Kansas, has 7 permanent galleries and 3 galleries of changing exhibits.

Museum of Natural History (C-12) Lawrence - displays U.S. Cavalry horse, Comanche, the only survivor of the Battle of the Little Bighorn.

Old Castle Museum Complex (D-12) Baldwin City - three historical buildings, including a Santa Fe Trail museum.

Old Depot Museum (D-12) Ottawa - wide array of exhibits (Civil War to NASA).

Maria Dea Cygnus Museum (E-12) Pleasanton - restored buildings and artifacts from the turbulent "Bleeding Kansas" days.

State Parks & Lakes

Cedar Bluff (C-3), 23 miles SE of Wakeeney on K-147.

Cheney (F-9), 20 miles NW of Wichita on K-53.

Clinton (C-12), 4 miles W of Lawrence on K-57.

El Dorado (E-9), 5 miles E of El Dorado on K-177.

Elk City (F-11), 7 miles N of Independence on US-169.

Fall River (F-11), 17 miles NW of Fredonia on K-96.

Glen Elder (B-7), 10 miles W of Beloit on US-24.

Kanopolis (D-7), 21 miles SE of Ellsworth on K-141.

Lowevell (F-11), 15 miles NE of Mankato on K-14.

Meads (F-4), 13 miles SW of Meade on K-368.

Prairie Dog (B-4), 3 miles W of Norton on US-36.

Sand Hills (E-8), 3 miles NE of Hutchinson.

Scott (D-3), 12 miles N of Scott City on K-95.

Toronto (E-11), 17 miles SW of Yates Center on K-105.

Tuttle Creek (B-10), 5 miles N of Manhattan on US-24.

Webster (B-5), 8 miles W of Stockton on US-24.

Wilson (C-7), 8 miles N of Wilson on K-222.

Historic Trails

Santa Fe Trail - opened the Great Southwest. Extends across the state roughly paralleling U.S. Hwy. 86.

Chisholm Trail - famous cattle drive trail. Over one million Texas cattle were driven to the great shipping center of Abilene.

Oregon Trail - followed the south bank of the Kansas River and crossed the river where Topeka is now located.

Smoky Hill or Butterfield Overland Dispatch - the quietest route to the Denver goldfields that were discovered in 1859.

Pony Express Route - segment of the trail used by Pony Express riders to relay mail from St. Joseph, Missouri, to Sacramento, California.

Scenic Trails & Rides

Gypsum Hills Trail Rides (F-7) Medicine Lodge - scenic canyons, mesa and buttes.

Hawthorne Ranch Trail Rides (E-10) Emporia - scenic 1 1/2 day pioneer adventure by wagon train.

William Allen White Memorial Self Guided Tour (B-10) Emporia - walking tour to landmarks and memorabilia of this Pulitzer Prize winner.

Platt Hills Scenic Tours (F-11) Paxico - buffalo herd, a century-old home, a pioneer village and prairie scenery.

Museums

Indian Raid Museum (B-4) Oberlin - replicas of the Indian raid in Kansas.

High Plains Museum (B-2) Goodland - frontier relics and the world's first helicopter.

Fort Wallace Museum (C-2) Wallace - recreates the Dalton raid on two Coffeyville banks in 1892.

Booth Hill Museum (E-4) Dodge City - a notorious collection of graves, guns and western relics.

Barbed Wire Museum (D-6) La Crosse - over 500 specimens of barbed wire and related items.

Pioneer Adobe House & Museum (D-9) Hillsboro - original dwelling built by Menomotte Indians in the 1870's.

Norman No. 1 Oil Well Museum (F-11) Neodesha - replica of the first successful oil well west of the Mississippi River.

Old Mill Museum (D-8) Lindsborg - old river mill and exhibits.

Menomotte Heritage Complex (E-8) Goessel - three-building museum conveying the art and spirit of Menomotte life.

Kansas Health Museum (E-8) Halstead - human body described in 21 exhibits.

Edwin A. Ulrich Museum of Art (F-9) Wichita - features American art, and a 82-by-28-foot Miro mosaic.

Cherokee Strip Living Museum (G-9) Arkansas City - history of the Cherokee Strip.

Kaw Methodist Mission and Museum (D-10) Council Grove - first Kansas school for Indians and pioneer children.

U.S. Cavalry Museum (C-8) Fort Riley - displays the army's role in taming the West.

Koester Museum (B-9) Marysville - 1876 grandly preserved home.

Kansas State Historical Society Museum (C-11) Topeka - largest collection of Kansas' artifacts.

Combat Air Museum (C-11) Topeka - rare collection of World War II aircraft.

Spencer Art Museum (C-12) Lawrence - only comprehensive art museum in Kansas, has 7 permanent galleries and 3 galleries of changing exhibits.

Museum of Natural History (C-12) Lawrence - displays U.S. Cavalry horse, Comanche, the only survivor of the Battle of the Little Bighorn.

Old Castle Museum Complex (D-12) Baldwin City - three historical buildings, including a Santa Fe Trail museum.

Old Depot Museum (D-12) Ottawa - wide array of exhibits (Civil War to NASA).

Maria Dea Cygnus Museum (E-12) Pleasanton - restored buildings and artifacts from the turbulent "Bleeding Kansas" days.

State Parks & Lakes

Cedar Bluff (C-3), 23 miles SE of Wakeeney on K-147.

Cheney (F-9), 20 miles NW of Wichita on K-53.

Clinton (C-12), 4 miles W of Lawrence on K-57.

El Dorado (E-9), 5 miles E of El Dorado on K-177.

Elk City (F-11), 7 miles N of Independence on US-169.

Fall River (F-11), 17 miles NW of Fredonia on K-96.

Glen Elder (B-7), 10 miles W of Beloit on US-24.

Kanopolis (D-7), 21 miles SE of Ellsworth on K-141.

Lowevell (F-11), 15 miles NE of Mankato on K-14.

Meads (F-4), 13 miles SW of Meade on K-368.

Prairie Dog (B-4), 3 miles W of Norton on US-36.

Sand Hills (E-8), 3 miles NE of Hutchinson.

Scott (D-3), 12 miles N of Scott City on K-95.

Toronto (E-11), 17 miles SW of Yates Center on K-105.

Tuttle Creek (B-10), 5 miles N of Manhattan on US-24.

Webster (B-5), 8 miles W of Stockton on US-24.

Wilson (C-7), 8 miles N of Wilson on K-222.

Historic Trails

Santa Fe Trail - opened the Great Southwest. Extends across the state roughly paralleling U.S. Hwy. 86.

Chisholm Trail - famous cattle drive trail. Over one million Texas cattle were driven to the great shipping center of Abilene.

Oregon Trail - followed the south bank of the Kansas River and crossed the river where Topeka is now located.

Smoky Hill or Butterfield Overland Dispatch - the quietest route to the Denver goldfields that were discovered in 1859.

Pony Express Route - segment of the trail used by Pony Express riders to relay mail from St. Joseph, Missouri, to Sacramento, California.

Scenic Trails & Rides

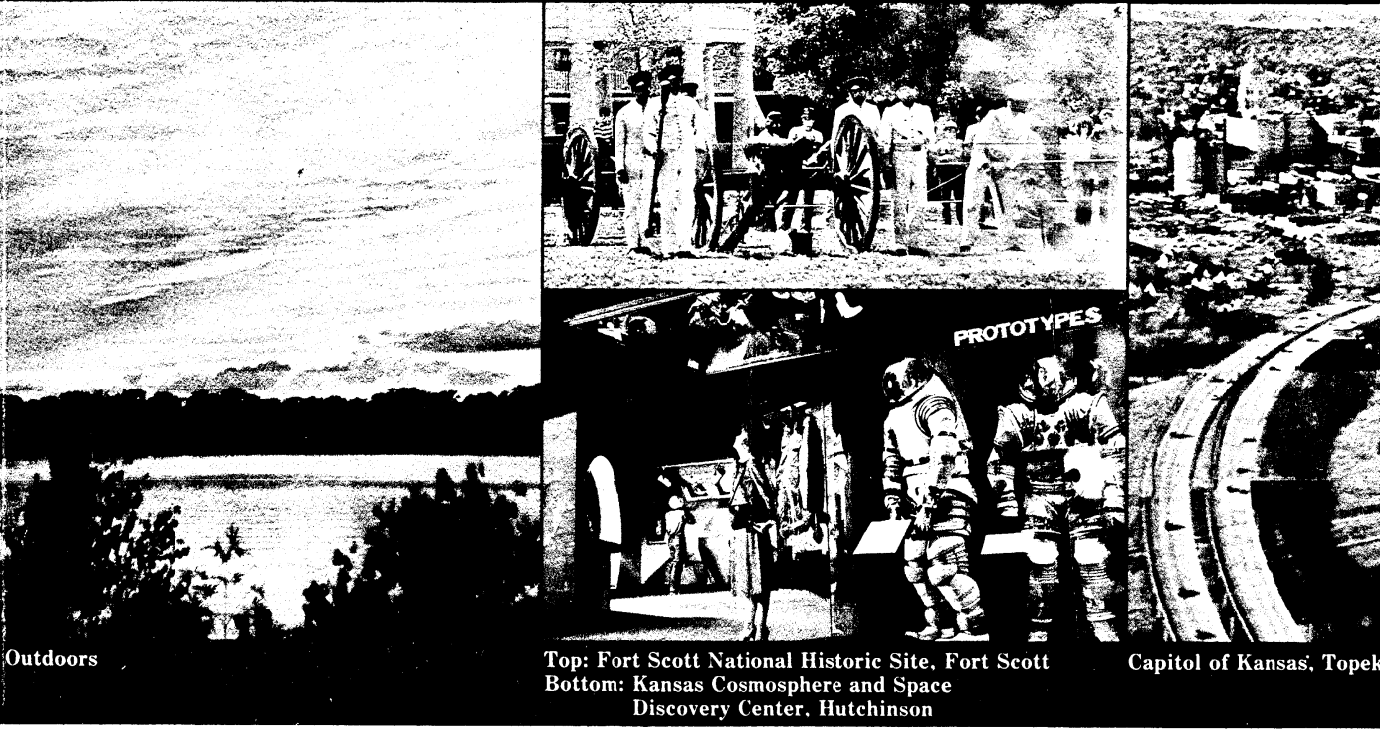
Gypsum Hills Trail Rides (F-7) Medicine Lodge - scenic canyons, mesa and buttes.

Hawthorne Ranch Trail Rides (E-10) Emporia - scenic 1 1/2 day pioneer adventure by wagon train.

William Allen White Memorial Self Guided Tour (B-10) Emporia - walking tour to landmarks and memorabilia of this Pulitzer Prize winner.

Platt Hills Scenic Tours (F-11) Paxico - buffalo herd, a century-old home, a pioneer village and prairie scenery.

Ah! Kansas



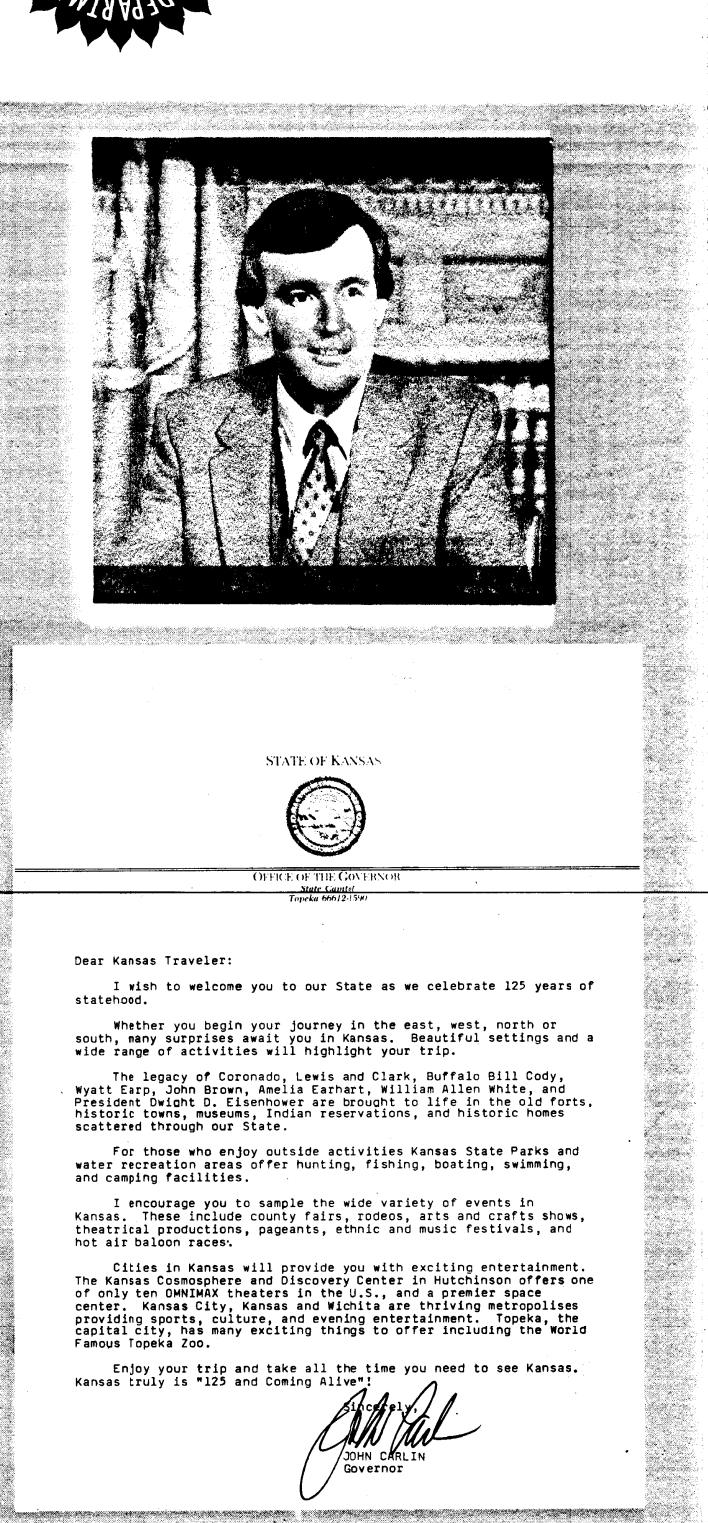
Top: Fort Scott National Historic Site, Fort Scott
Bottom: Spectators, International Pancake Race, Liberal

Wind your way through miles of American history, right here in Kansas. Relive the past in the historic pioneer towns and forts. Discover the geological wonders, tranquil lakes and streams, scenic trails, and hundreds of museums. Celebrate life at the warmhearted fairs and colorful festivals. Come alive in Kansas.



Top: Staged Gunfight at Booth Hill Museum, Inc., Dodge City
Bottom: Spectators, International Pancake Race, Liberal

Kansas
JOHN B. KEMP, Secretary
STATE OFFICE BUILDING - TOPEKA, KANSAS 66612-1569



WICHITA

POPULATION OF CITIES AND TOWNS

- Over 100,000
- 50,000-100,000
- 25,000-50,000
- 5,000-25,000
- Over 5,000
- Airport

HAYS

JUNCTION CITY

GREAT BEND

SALINA

DODGE CITY

GARDEN CITY

TOPEKA

LIBERAL

HUTCHINSON

EMPIRIA

MANHATTAN

KANSAS CITY

Prepared by Kansas Department of Transportation, Bureau of Transportation Planning
Kansas Department of Economic Development, Travel and Tourism Division