

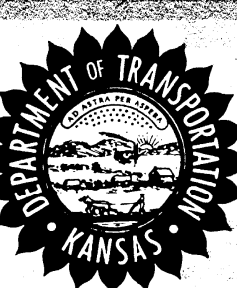
1984

Kansas

TRANSPORTATION MAP

JOHN B. KEMP, Secretary

For Free Distribution





Kansas

"Land of Ahs"

Build Your Own Yellow Brick Road Tour

- #### Attractions
- Castle Rock and Chalk Pyramids (C-4) Gove County - tower majestically over the prairie in naturally carved sandstone.
 - El Cuartelejo (D-3) Scott City - inhabited by ancient Indians and was their first white settlement in Kansas.
 - The Windsor Hotel (E-3) Garden City - 1886 "Waldorf of the Prairies" hotel.
 - Dorothy's House (G-3) Liberal - recreates Dorothy's home as described in *The Wizard of Oz*.
 - Dutton Gang Hideout (F-4) Meade - tour headquarters, getaway tunnel and museum.
 - Front Street (E-4) Dodge City - Wild West replica. Includes Long Branch Saloon and summer variety show.
 - World's Largest Hand Dug Well (F-6) Greenburg - 109 feet deep and was dug in 1885.
 - Old Fort Hays (C-6) Hays - preserved frontier fort.
 - Cathedral of the Plains (C-6) Victoria - stands as one of the century's great architectural triumphs.
 - Fort Larned National Historic Site (E-6) Larned - protected the Santa Fe Trail until 1876.
 - Santa Fe Trail Center (E-6) Larned - museum of Spanish, Indian, pioneer and railroad activities.
 - Curry Nation Home (F-7) Medicine Lodge - home of stormy temperance leader.
 - Mushroom Rocks (D-7) Ellsworth - landmark rock formations.
 - Garden of Eden (C-7) Lucas - unique concrete masterpiece.
 - Continental Sculpture Hall (B-6) Osborne - features over 1400 unique sculptures of American history.
 - Brown Grand Opera House (B-8) Concordia - restores the grandeur of 1906 entertainment with original woodwork and furnishings.
 - Rock City (C-8) Minneapolis - unworldly, smooth large sandstone formations.
 - Riesenhower Center (C-9) Abilene - President's boyhood home, museum, library and burial site.
 - Greenwood Hall of Fame (C-9) Abilene - includes history, exhibits, and a theater.
 - Old Abilene Town (C-9) Abilene - recreated wild cowtown.
 - Eisenhower Center, Abilene
 - Indian Burial Pit (C-8) Salina - prehistoric burial site for more than 140 Indians.
 - Brookville Hotel (D-8) Brookville - historic hotel and nationally famous dining establishment.
 - Birger Sandzen Memorial Gallery (D-8) Lindsborg - displays works of internationally praised Swedish-American painter.
 - Coronado Heights (D-8) Lindsborg - Coronado once camped here in search of the Seven Cities of Gold.
 - Kansas Cosmospere and Space Discovery Center (E-8) Hutchinson - 70 mm Omnimax projection system and over 1400 space artifacts on display.
 - Fun Valley (E-8) Hutchinson - 350 acres outdoor family recreation complex.



Bartlett Arboretum, Belle Plaine

Historic Cottomwood Museum (F-9) Wichita - recreates historic Wichita.

Mid-America All Indian Center, Inc. (F-9) Wichita - serves the cultural and social needs of Native Americans.

Sedgewick County Zoo (F-9) Wichita - 1000 animals living on 212 landscaped acres.

Bartlett Arboretum (F-9) Belle Plaine - vegetation from all over the world.

Eureka Downs (E-10) Eureka - quarterhorse racing.

Chase County Courthouse (D-10) Cottonwood Falls - oldest fully operating courthouse in Kansas.

John M. Davis Memorial (D-11) Hixson - one of the best known unique tombs in the country.

Louisburg Cider Mill and Country Store (D-12) Louisburg - working antique cider mill and authentically furnished country store.

Cimarron Hotel (E-4) Cimarron - renovated Old West hotel and restaurant.

American Institute of Baking (C-10) Manhattan - the only school of baking, research and sanitation education institute in the world.

Lane Union (C-11) Leocompton - attended by Eisenhower's parents and built on foundation of what was to be the first Kansas Capitol.

Constitution Hall (C-11) Leocompton - Kansas' first pro-slavery constitution was written and signed here.

Museums

- Indian Raid Museum (B-4)** Oberlin - replicas of the last Indian raid in Kansas.
- High Plains Museum (B-2)** Goodland - frontier relics and the world's first helicopter.
- Fort Wallace Museum (C-2)** Wallace - portrays days of the Old West.
- Fick Fossil Museum (C-3)** Oakley - captures Kansas geology of 100 million years ago.
- Gas and Historical Museum (F-2)** Hugoton - history of natural gas development.
- Sternberg Memorial Museum (C-6)** Hays - natural history of western Kansas.
- Riley Wallace Museum (F-9)** Wallace - portrays days of the Old West.
- Waterville Opera House (B-9)** Waterville - boasts a full summer theatre season.
- Hollenberg Pony Express Station (B-9)** Hanover - nation's only remaining unaltered Pony Express Station.
- Fort Marley (B-10)** Seneca - authentically restored village.
- Gage Park Zoo and Rainforest (C-11)** Topeka - over 400 animals and indoor Tropical Rain Forest.
- State Capitol (C-11)** Topeka - tour six floors of the statehouse and 20-acre grounds.
- EFA Reinisch Rose Garden (C-11)** Topeka - over 400 rose varieties in more than 7000 plants.
- Amelia Earhart's Home (B-11)** Atchinson - historic items from the famous aviator's life.
- Fort Leavenworth (C-12)** Leavenworth - largest collection of horse drawn vehicles in the world.
- Agricultural Hall of Fame (C-12)** Bonner Springs - honors people and events that have shaped American agriculture.
- Old Shawnee Town (C-12)** Shawnee - Kansas' first jail, cabin, and other original buildings.
- Vassar Junction (B-11)** Vassar - Vassar Shoreline restaurant and Playhouse summer theater.
- Quayle Rare Bible Collection (D-12)** Baldwin City - ancient tablets, scrolls, leaves and Bibles.
- John Brown Memorial Park (D-12)** Osawatimie - a log cabin museum and "The Old Stone Church" dedicated in 1861.
- Fort Scott National Historic Site (E-12)** Fort Scott - authentically restored military post of 1842.
- General Frederick Funston Home (E-11)** Iola - relics from the life of this amazing explorer and soldier.
- Little House on the Prairie (F-11)** Independence - restored log cabin on the actual site of the original Laura Ingalls Wilder's "Little House on the Prairie."
- Ralph Mitchell Zoo (F-11)** Independence - over 50 species, plus a beautiful park and playground.
- Brown Mansion (G-11)** Coffeyville - authentically furnished grand old mansion and museum of early 1900's.
- William Allen White Memorial Sculpture (B-10)** Emporia - located in Peter Pan Park this sculpture honors the famous editor.

State Parks & Lakes

- Cedar Bluff (C-5)**, 23 miles SE of Wakefeny on K-147.
- Cheney (F-9)**, 29 miles NW of Wichita on K-251.
- Clinton (C-13)**, 8 miles W of Lawrence on US-40.
- Crawford (F-12)**, 10 miles E of Girard on K-177.
- El Dorado (E-9)**, 5 miles NE of Dorado on K-177.
- Elk City (F-11)**, 7 miles NE of Independence on US-160.
- Fall River (F-11)**, 17 miles NW of Fredonia on K-56.
- Glen Elder (B-7)**, 10 miles W of Beloit on US-24.
- Kanopolis (D-7)**, 21 miles SE of Ellsworth on K-141.
- Lowewell (B-7)**, 15 miles NE of Mauckato on K-14.
- Meade (F-4)**, 13 miles SW of Meade on K-53.
- Melvorn (D-11)**, 8 miles SW of Lyndon on K-278.
- Milford (C-9)**, 2 miles NW of Junction City on K-57.
- Perry (C-11)**, 16 miles NE of Ottawa on K-308.
- Pomona (D-11)**, 16 miles W of Norton on US-35.
- Prairie Dog (B-5)**, 3 miles W of Norton on US-35.
- Sand Hills (E-8)**, 9 miles NE of Hutchinson.
- Scott (D-8)**, 12 miles N of Scott City on K-356.
- Toronto (E-11)**, 17 miles SW of Yates Center on US-107.
- Tuttle Creek (B-10)**, 5 miles N of Manhattan on US-24.
- Weber (B-5)**, 8 miles W of Stockton on US-24.
- Wilson (C-7)**, 8 miles N of Wilson on K-232.

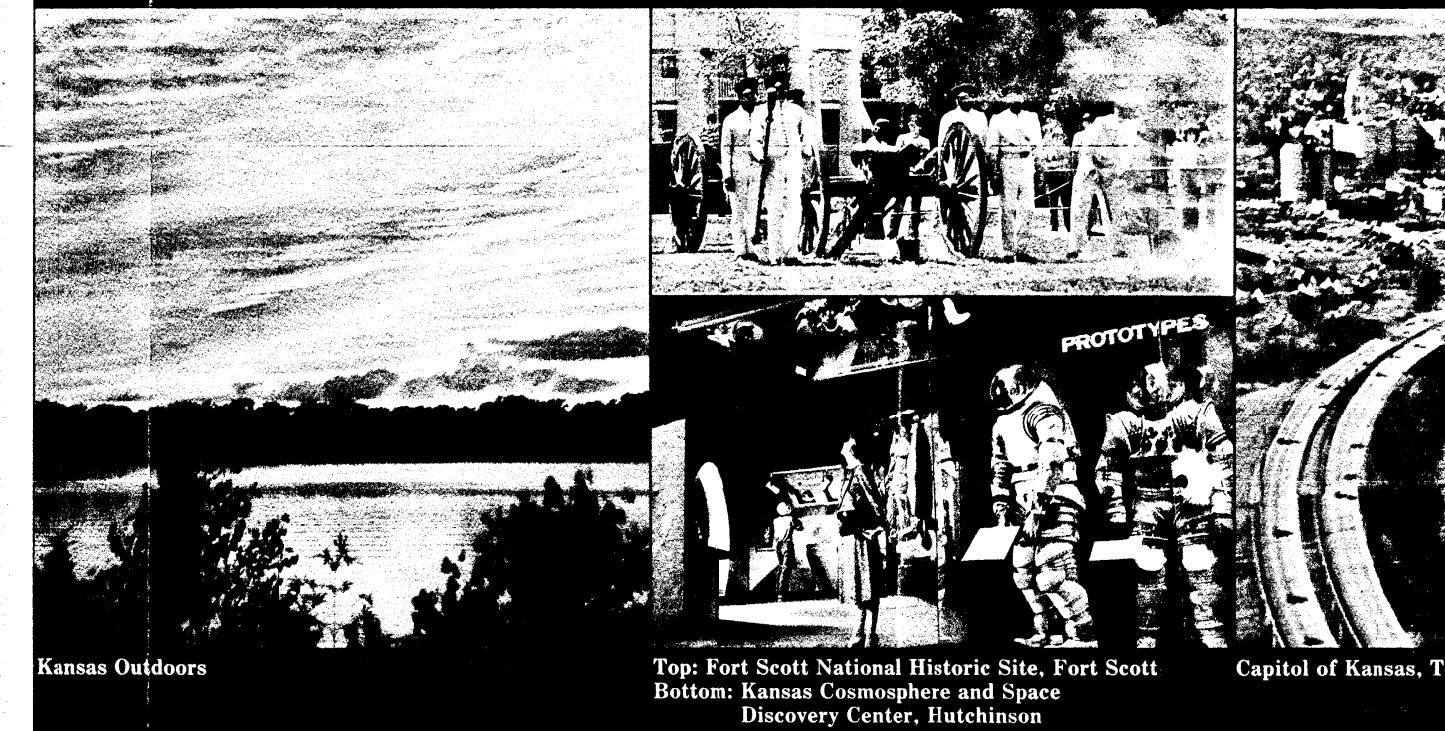
Historic Trails

- Santa Fe Trail** - opened the Great Southwest. Extends across the state roughly paralleling U.S. Hwy. 56.
- Chisholm Trail** - famous cattle drive trail. Over one million Texas cattle were driven to the great shipping center of Abilene.
- Oregon Trail** - followed the south bank of the Kansas River and crossed the river where Topeka is now located.
- Smoky Hill or Butterfield Overland Dispatch** - the quickest route to the Denver goldfields that were discovered in 1859.
- Pony Express Route** - segment of the trail used by Pony Express riders to relay mail from St. Joseph, Missouri, to Sacramento, California.

Scenic Trails & Rides

- Gypsum Hills Trail Rides (E-7)** Medicine Lodge - scenic horseback or hayride through a series of canyons, mesas and buttes.
- Flint Hills Overland Wagon Trips (E-9)** El Dorado - scenic 1 1/2 day pioneer adventure by wagon train.
- Hawthorne Ranch Trail Rides (E-10)** Eureka-horseback riding, hiking, camping, canoeing and fishing on 960 acre working ranch.
- William Allen White Memorial Self Guided Tour (B-10)** Emporia - walking tour to landmarks and memorabilia of this Pulitzer Prize winner.
- Flint Hills Scenic Tours (F-11)** Paxico - buffalo herd, a century-old home, a pioneer village and prairie scenes.

Ah...Kansas!



Top: Fort Scott National Historic Site, Fort Scott
Bottom: Kansas Cosmospere and Space Discovery Center, Hutchinson

Follow the yellow brick road through acres of sparkling lakes and rivers, miles of heart pleasing scenery and dazzling sunsets.

A land of western history, pioneer mansions, stirring cities, county fairs, and friendly people. Follow it through Kansas. A Land of Ah's.

Radio Stations

Radio and weather information provided from the National Weather Service and the Kansas Department of Transportation. Radio stations are listed by county.

County	City	Call Letters	Frequency
ADAMS	Adams	KADZ	107.5
	Adams	KADZ	107.5
	Adams	KADZ	107.5
	Adams	KADZ	107.5
AGAWAMONT	Agawamont	KAGW	107.5
	Agawamont	KAGW	107.5
	Agawamont	KAGW	107.5
	Agawamont	KAGW	107.5
ALFORD	Alford	KALF	107.5
	Alford	KALF	107.5
	Alford	KALF	107.5
	Alford	KALF	107.5
ANDERSON	Anderson	KAND	107.5
	Anderson	KAND	107.5
	Anderson	KAND	107.5
	Anderson	KAND	107.5
BARNEYS	Barneys	KBAR	107.5
	Barneys	KBAR	107.5
	Barneys	KBAR	107.5
	Barneys	KBAR	107.5
BARTLESVILLE	Bartlesville	KBTV	107.5
	Bartlesville	KBTV	107.5
	Bartlesville	KBTV	107.5
	Bartlesville	KBTV	107.5
BEECHER	Beecher	KBEE	107.5
	Beecher	KBEE	107.5
	Beecher	KBEE	107.5
	Beecher	KBEE	107.5
BELL	Bell	KBEL	107.5
	Bell	KBEL	107.5
	Bell	KBEL	107.5
	Bell	KBEL	107.5
BENNING	Benning	KBEN	107.5
	Benning	KBEN	107.5
	Benning	KBEN	107.5
	Benning	KBEN	107.5
BERNARD	Bernard	KBER	107.5
	Bernard	KBER	107.5
	Bernard	KBER	107.5
	Bernard	KBER	107.5
BLISS	Bliss	KBLI	107.5
	Bliss	KBLI	107.5
	Bliss	KBLI	107.5
	Bliss	KBLI	107.5
BOYD	Boyd	KBOY	107.5
	Boyd	KBOY	107.5
	Boyd	KBOY	107.5
	Boyd	KBOY	107.5
BOYD	Boyd	KBOY	107.5
	Boyd	KBOY	107.5
	Boyd	KBOY	107.5
	Boyd	KBOY	107.5
BOYD	Boyd	KBOY	107.5
	Boyd	KBOY	107.5
	Boyd	KBOY	107.5
	Boyd	KBOY	107.5

Highway Patrol Division Stations

These are 24-hour stations. For information on other stations, call the nearest station. Call the nearest station for information on other stations.

Station	Location	Hours
1	Lawrence	24 hours
2	Lawrence	24 hours
3	Lawrence	24 hours
4	Lawrence	24 hours
5	Lawrence	24 hours
6	Lawrence	24 hours
7	Lawrence	24 hours
8	Lawrence	24 hours
9	Lawrence	24 hours
10	Lawrence	24 hours
11	Lawrence	24 hours
12	Lawrence	24 hours
13	Lawrence	24 hours
14	Lawrence	24 hours
15	Lawrence	24 hours
16	Lawrence	24 hours
17	Lawrence	24 hours
18	Lawrence	24 hours
19	Lawrence	24 hours
20	Lawrence	24 hours
21	Lawrence	24 hours
22	Lawrence	24 hours
23	Lawrence	24 hours
24	Lawrence	24 hours

NEWTON

MANHATTAN

LAWRENCE

TOPEKA

KANSAS CITY

TOPEKA

KANSAS CITY

TOPEKA

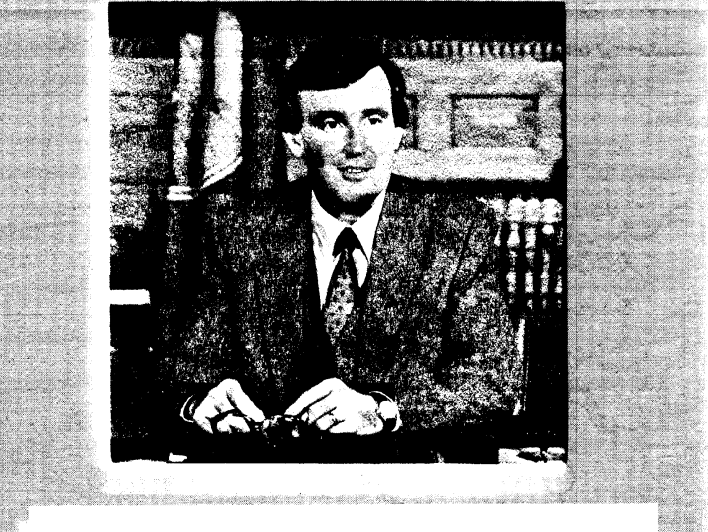
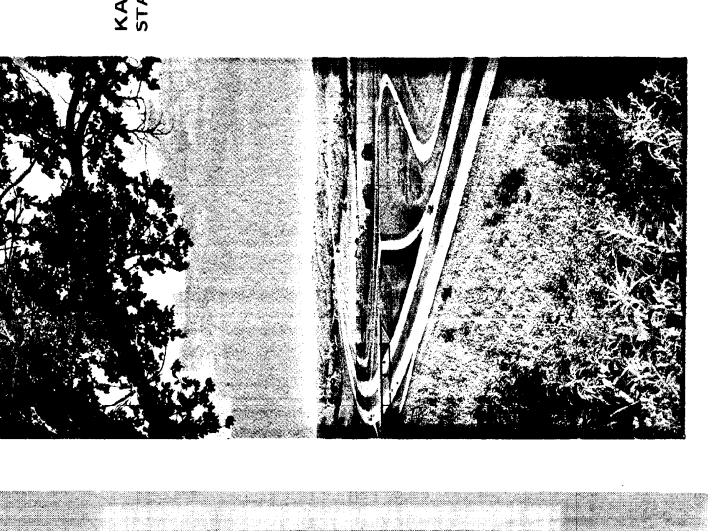
KANSAS CITY

TOPEKA

KANSAS CITY

KANSAS TRANSPORTATION MAP

KANSAS DEPARTMENT OF TRANSPORTATION
STATE EMPLOYEES BUILDING - TOPEKA, KANSAS 66603



Dear Kansas Traveler:

Many suggestions await you in Kansas whether you begin your trip in the heart of the state or in the heart of the country. The heart of the state is in the heart of the country. The heart of the country is in the heart of the state.

Kansas is a place for history buffs interested in the Wild West and the heart of the state. The heart of the state is in the heart of the country. The heart of the country is in the heart of the state.

Kansas also offers a wide range of scenic spots to visit. From the heart of the state to the heart of the country, there is always a scenic spot to visit.

State parks and nature preservation areas are excellent for scenic viewing, swimming and fishing. There is always a scenic spot to visit.

Thank you for your interest in Kansas. The Kansas Department of Transportation will help you make your trip even more enjoyable.

Welcome to the "Land of Ahs!"

John B. Kemp
Secretary

POPULATION OF CITIES AND TOWNS

Population	Symbol
Over 100,000	Large square
50,000-100,000	Medium square
25,000-50,000	Small square
5,000-25,000	Very small square
Under 5,000	Small circle
Airport	Circle with 'A'

WICHITA

WICHITA

WICHITA

WICHITA

TOPEKA

TOPEKA

KANSAS CITY

KANSAS CITY