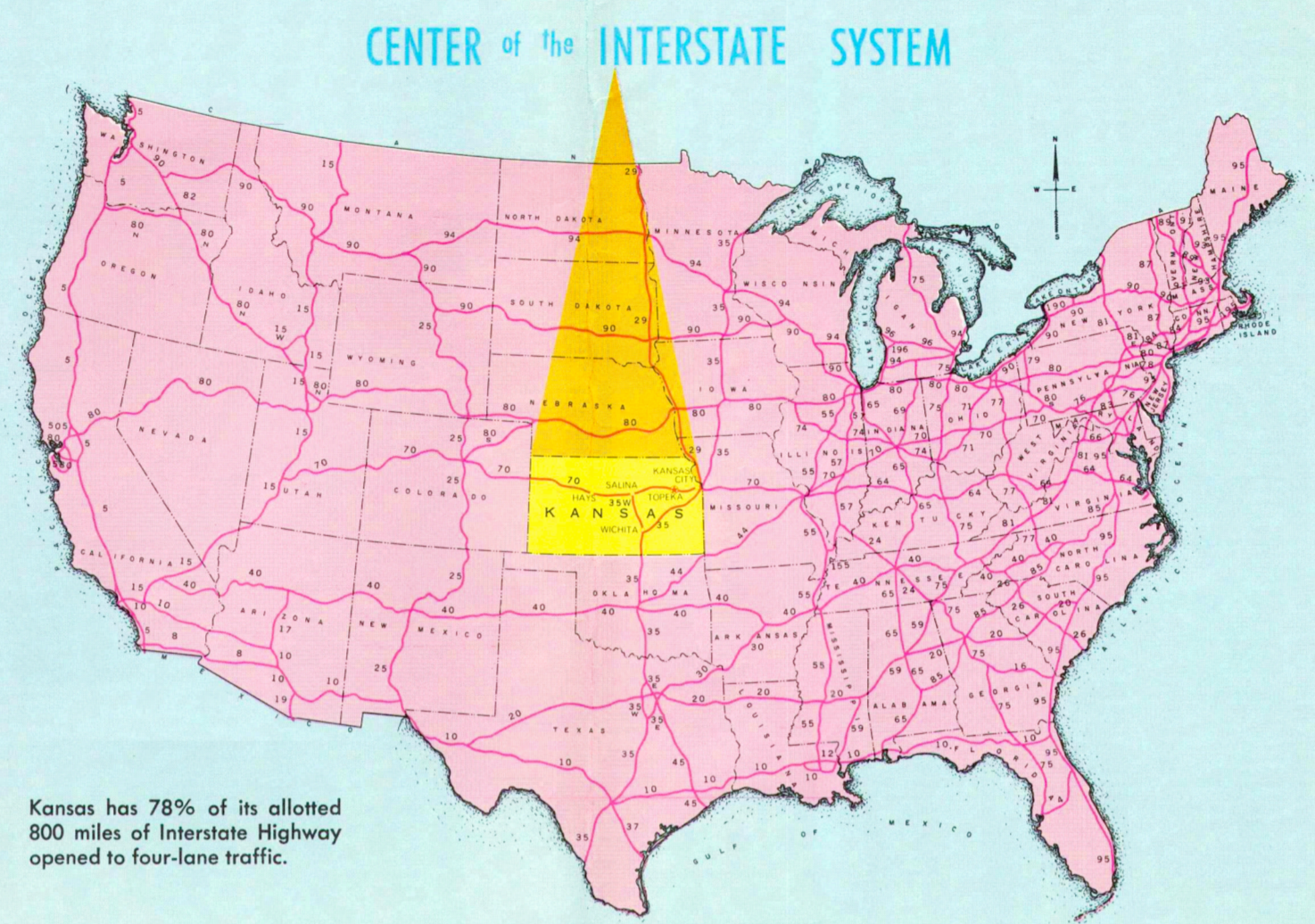
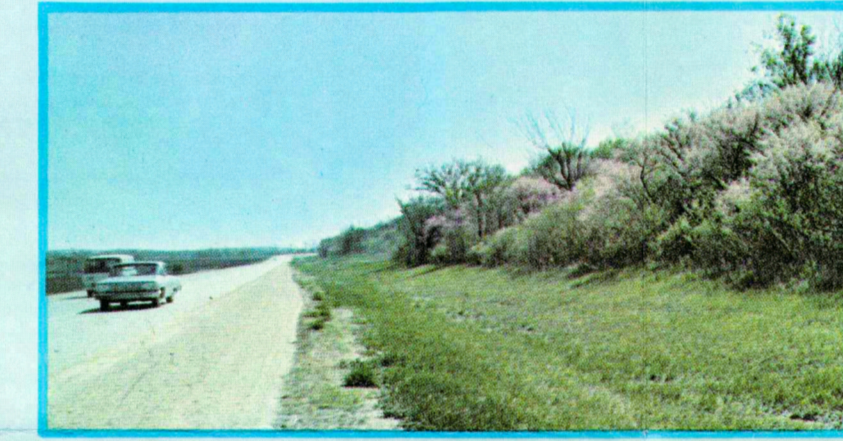
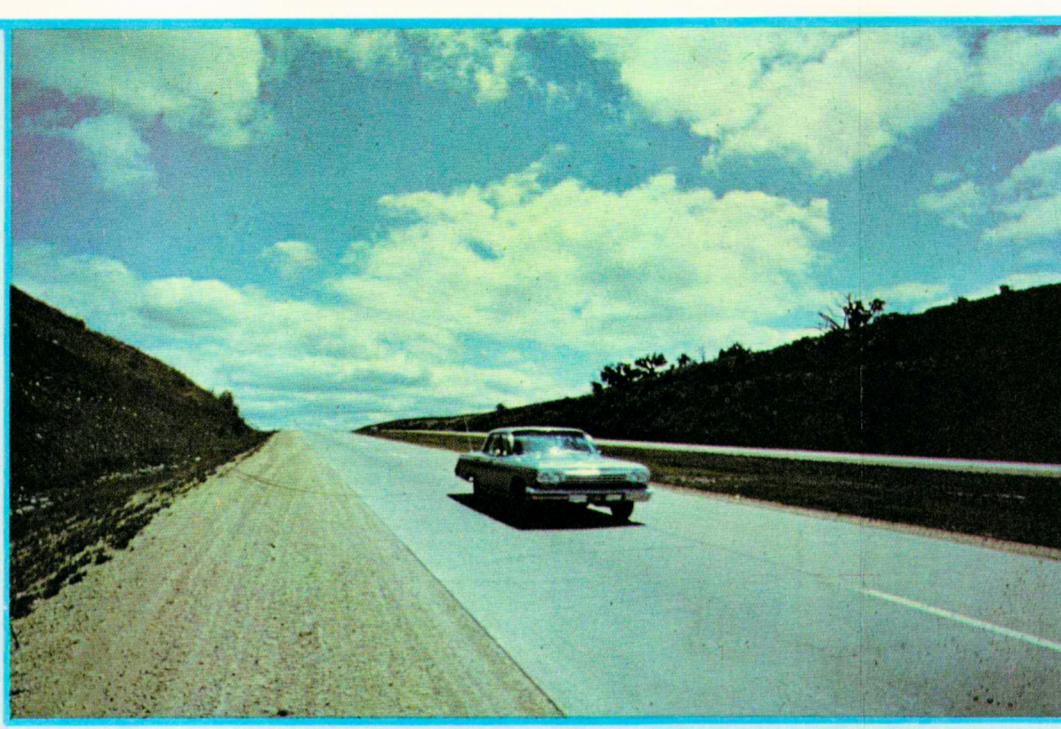
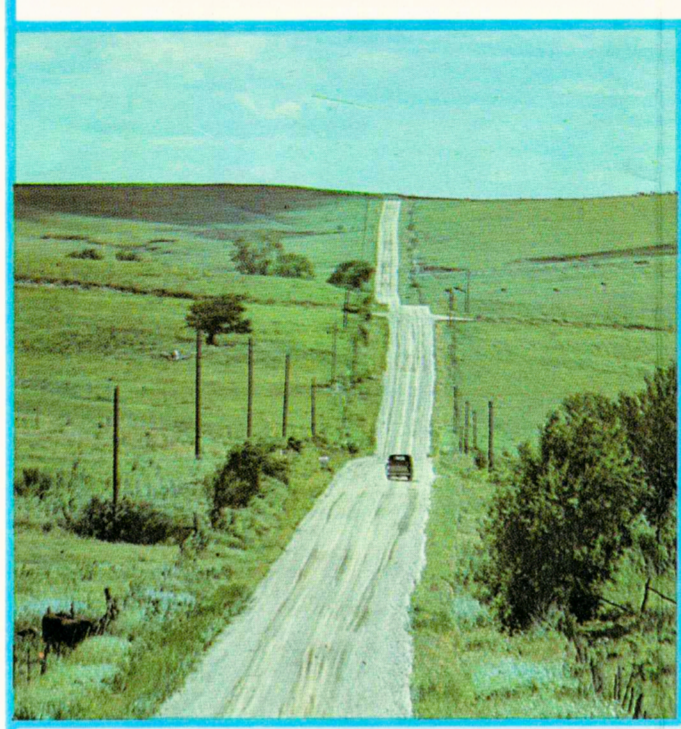
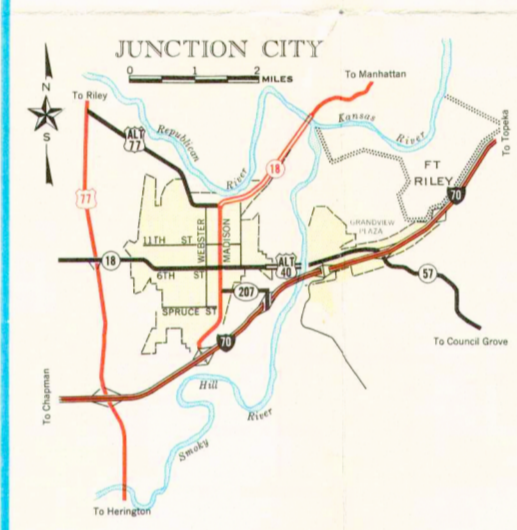
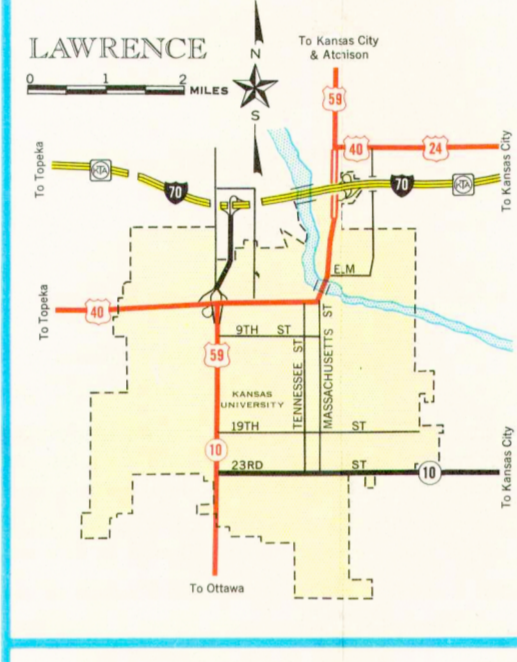
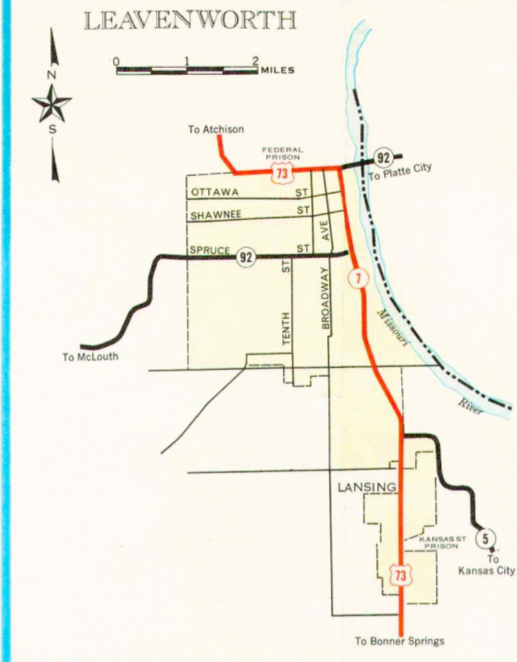
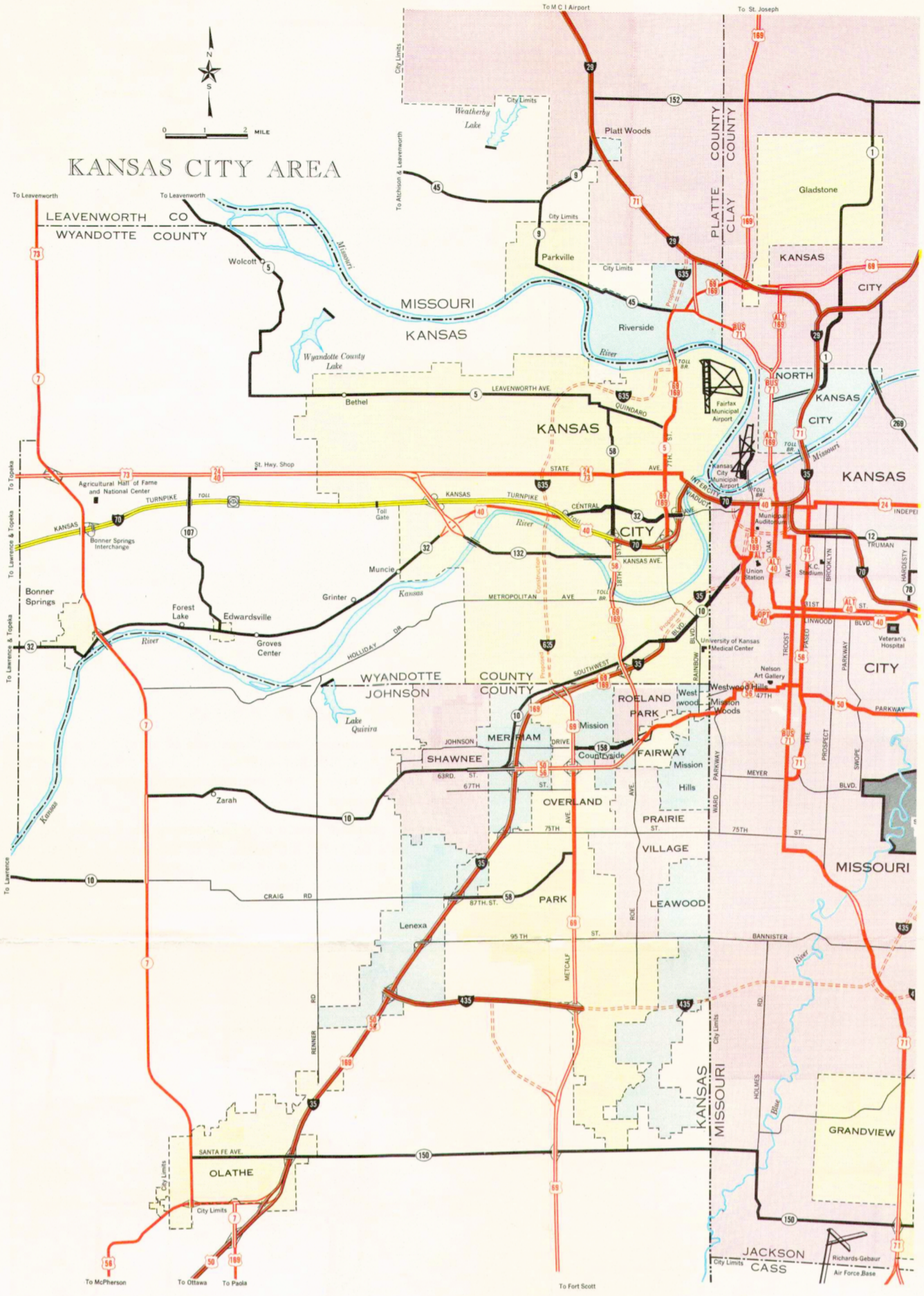
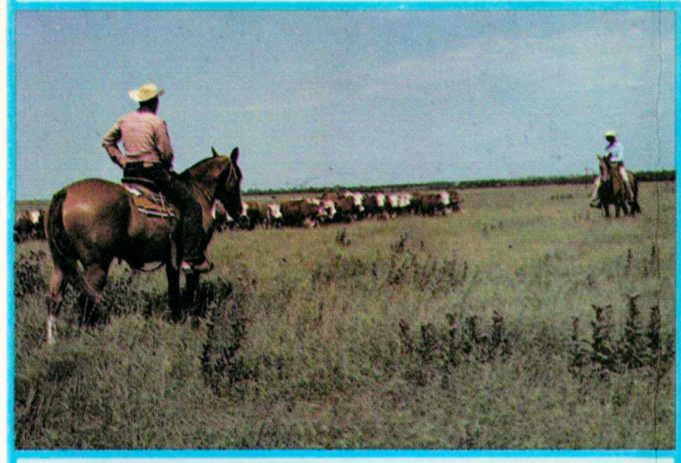
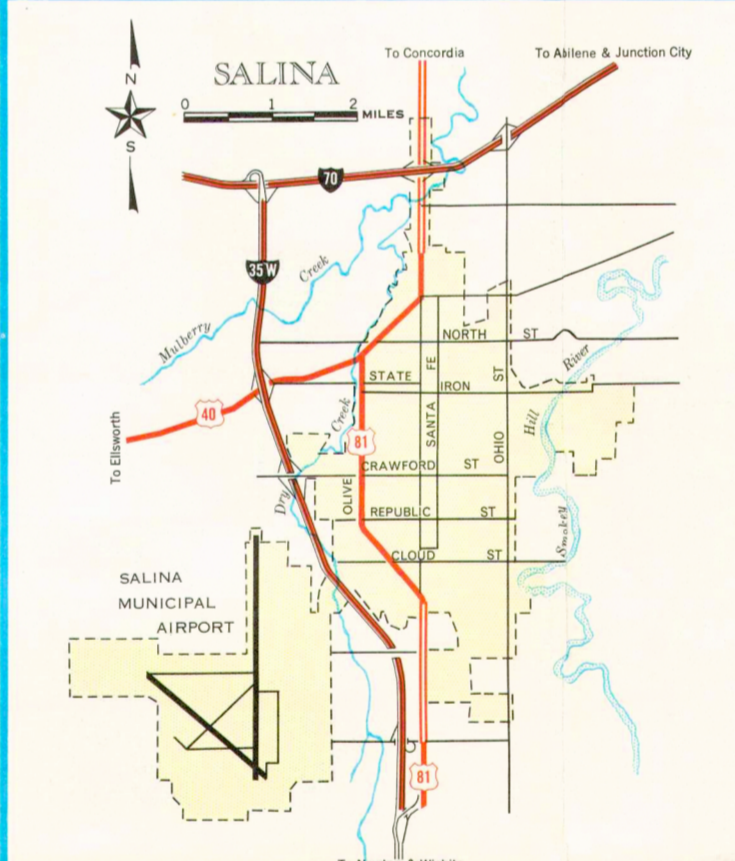
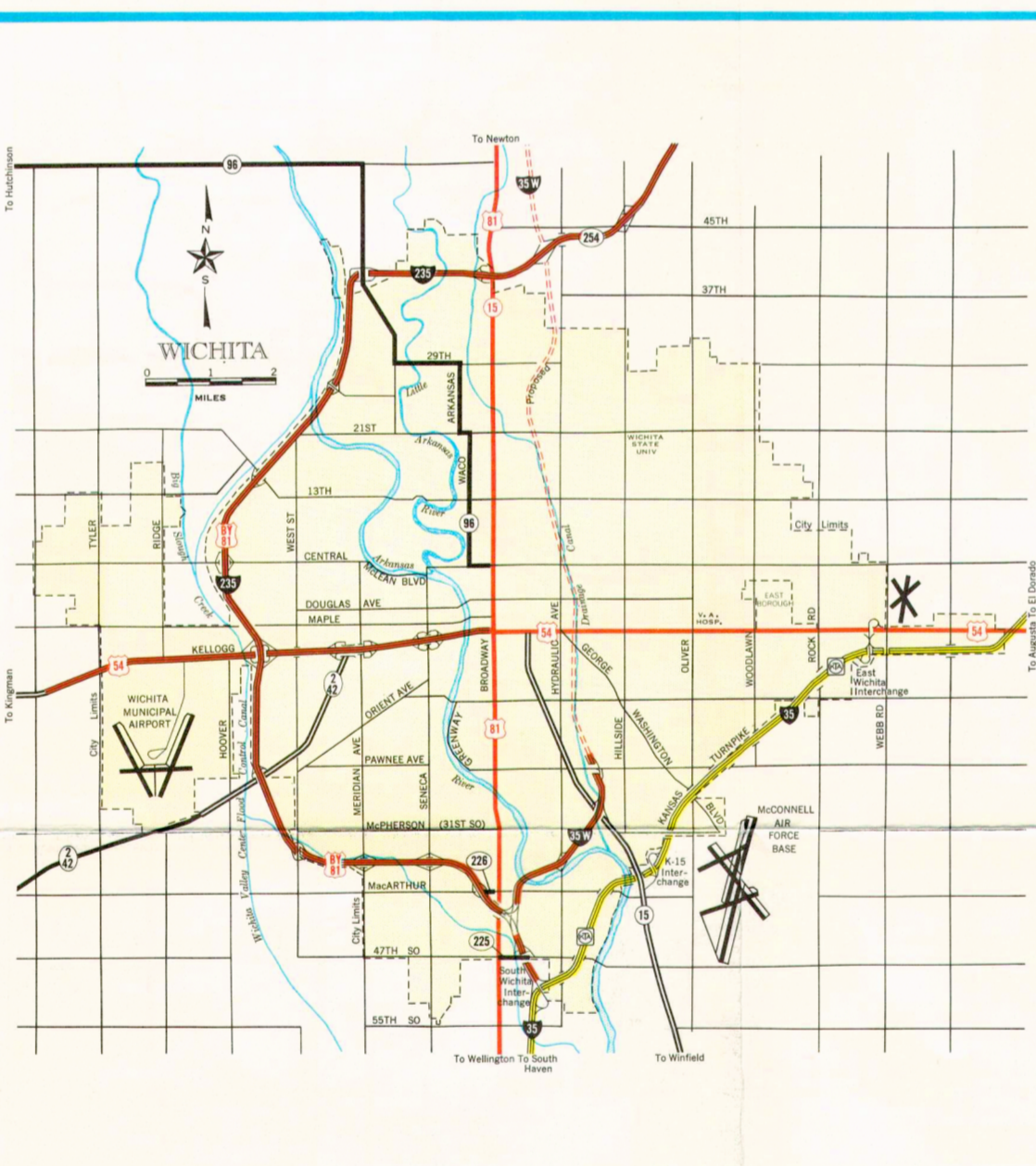




# HIGHWAYS and BYWAYS in BEAUTIFUL KANSAS



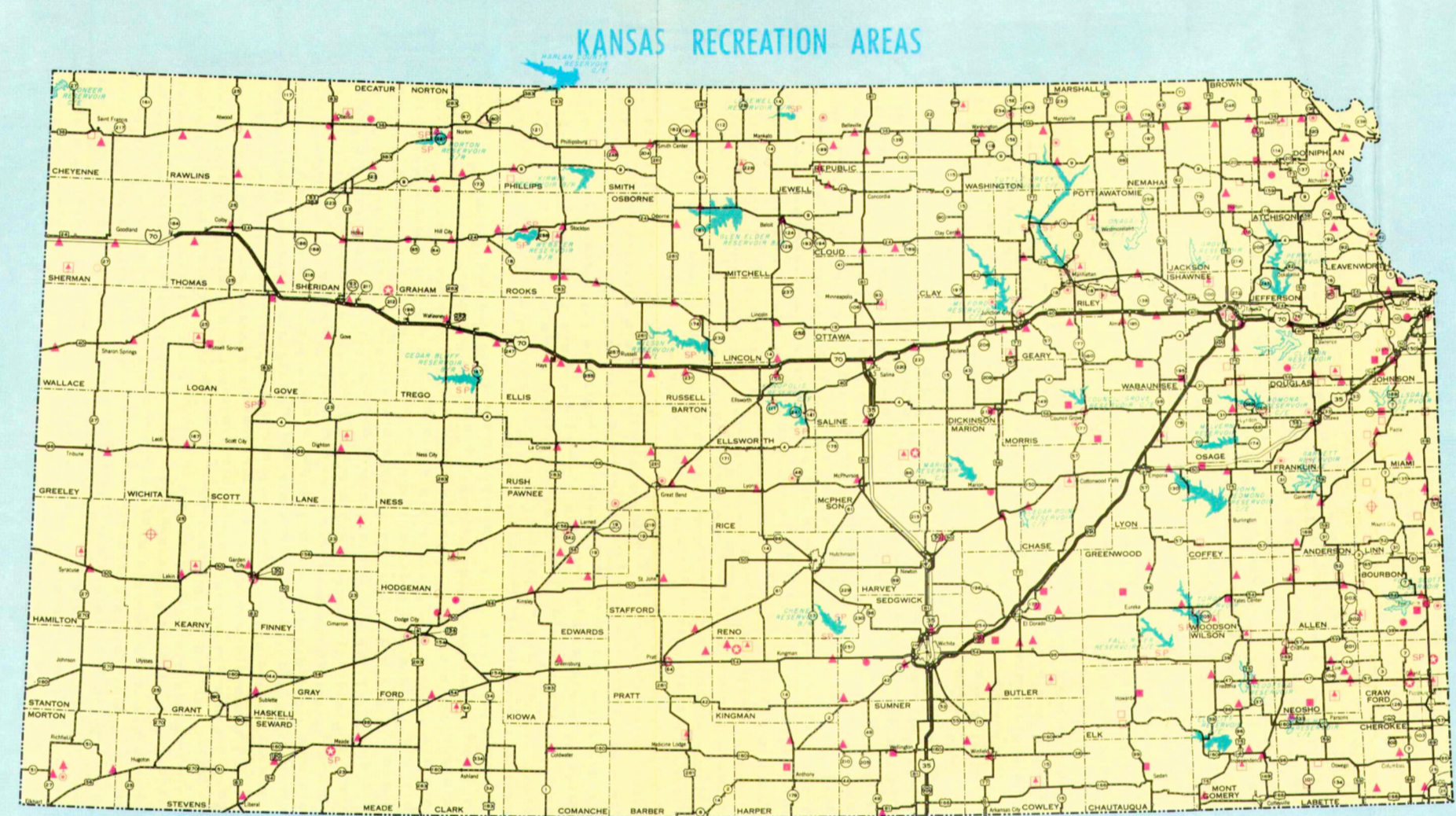
Kansas has 78% of its allotted 800 miles of Interstate Highway opened to four-lane traffic.



## KANSAS RADIO STATIONS

Weather and road information may be obtained by listening to any of the following:

Station	Kilowatts	Station	Kilowatts
KAB-Abilene	1560	KNDY-Marysville	1570
KAR-Arkansas City	1280	KNEX-McPherson	1540
KAR-Atchison	1470	KBEA-Mission	1480
KCB-Charotte	1460	KRG-Newton	950
GGF-Coffeyville	690	KNB-Norton	1530
KXX-Clay	790	KOFO-Ottawa	1220
KNCK-Candora	1390	KKPC-Parsons	1540
KED-Dodge City	1550	KKAN-Phillipsburg	1490
KONO-Dodge City	1370	KOAM-Pittsburg	860
KETO-EI Dorado	1260	KKIC-Pittsburg	1340
KVO-Emporia	1400	KWNS-Pratt	1290
KMDO-Fort Scott	1600	KRSL-Russell	990
KIUL-Garden City	1240	KFRM-Salina	550
KUPK-Garden City	1950	KLS-Salina	910
KLOE-Goodland	730	KSAL-Salina	1150
KVGB-Great Bend	1590	KFLA-Scott City	1310
KAYS-Hays	1400	KEW-Topeka	1440
KWBW-Hutchinson	1450	KTOP-Topeka	1490
KWHK-Hutchinson	1260	WIBW-Topeka	580
KIND-Independence	1010	WREN-Topeka	1250
KALN-Iola	1370	KULY-Ulysses	1420
KJCK-Junction City	1420	KLEY-Wallington	1130
KCEN-Kansas City	1340	KAKE-Wichita	1240
KANS-Larned	1510	KFDI-Wichita	1070
KLWN-Lawrence	1320	KFH-Wichita	1330
KCLO-Leavenworth	1410	KLEO-Wichita	1480
KLB-Liberal	1470	KSIB-Wichita	900
KSCB-Liberal	1270	KWBB-Wichita	1410
KMAN-Manhattan	1350	KNIC-Winfield	1550



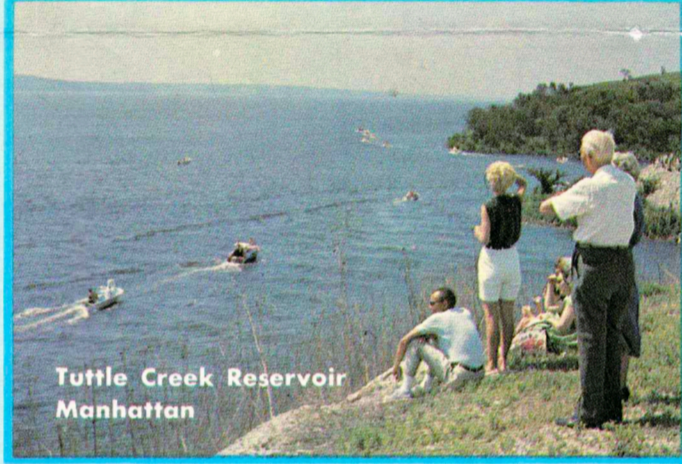
**FORESTRY FISH AND GAME**  
LAKE  
WILDLIFE AND WATERFOWL  
OTHER MANAGEMENT

**PARK AND RESOURCES BOARD**  
HISTORIC SITE  
STATE HIGHWAY ROADSIDE PARK

**LEGEND**

**MUNICIPAL LAKES**  
GREATER THAN 50 ACRES  
LESS THAN 50 ACRES  
IMPOUNDMENTS BY OTHERS  
GREATER THAN 50 ACRES  
LESS THAN 50 ACRES

**CORPS OF ENGINEERS PROJECTS**  
BUREAU OF RECLAMATION PROJECTS  
COMPLETED OR UNDER CONSTRUCTION  
AUTHORIZED



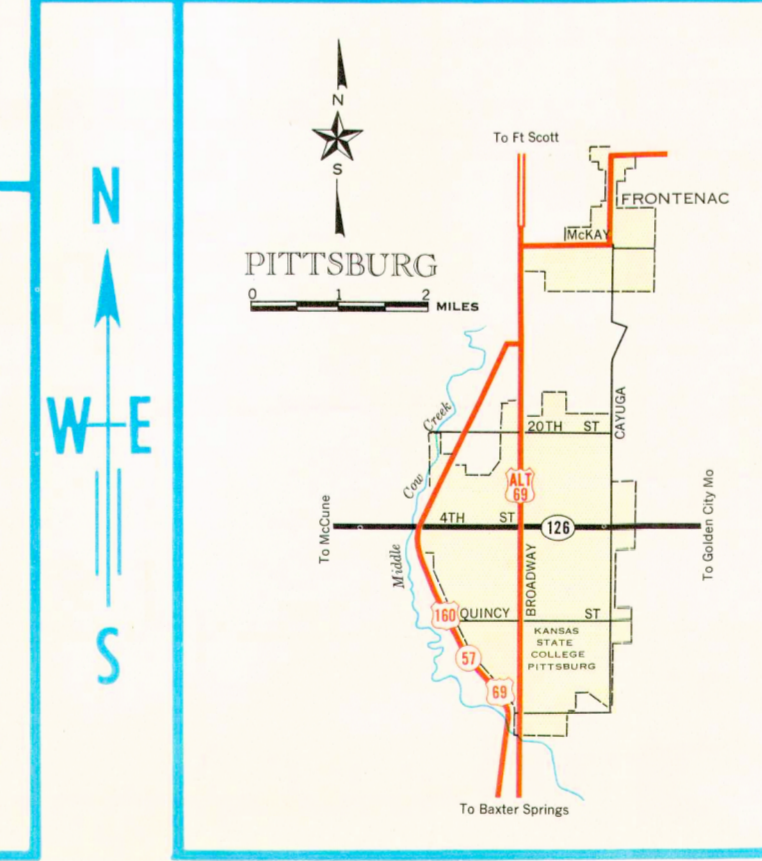
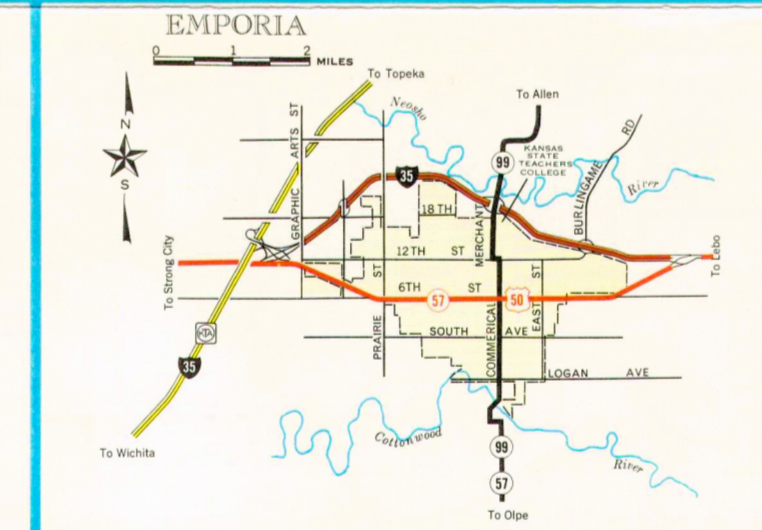
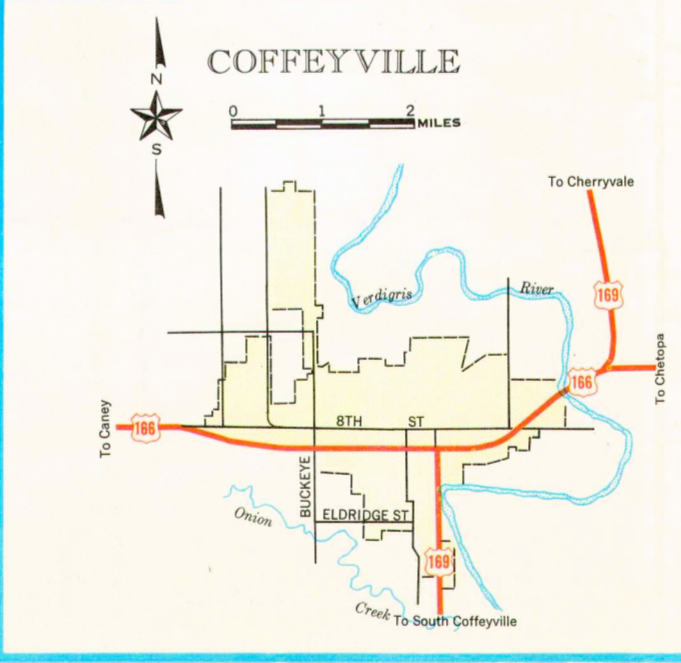
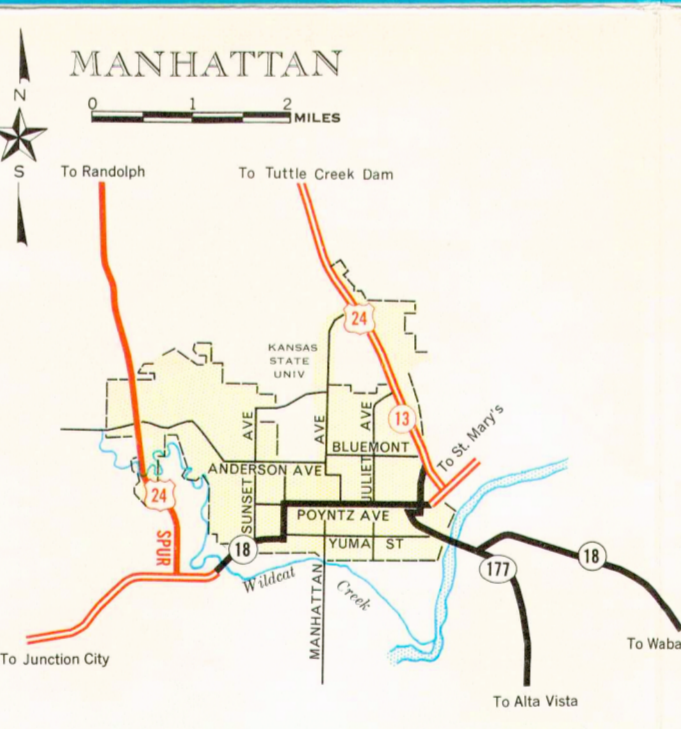
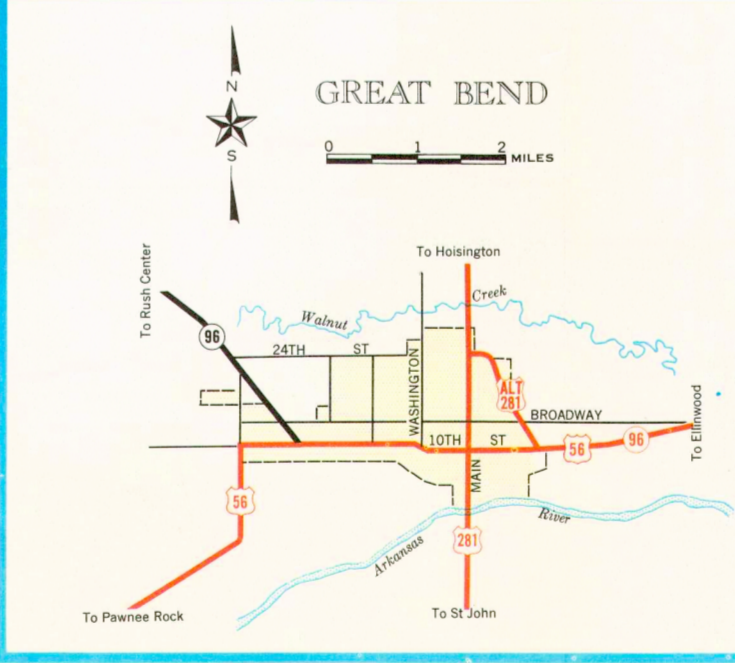
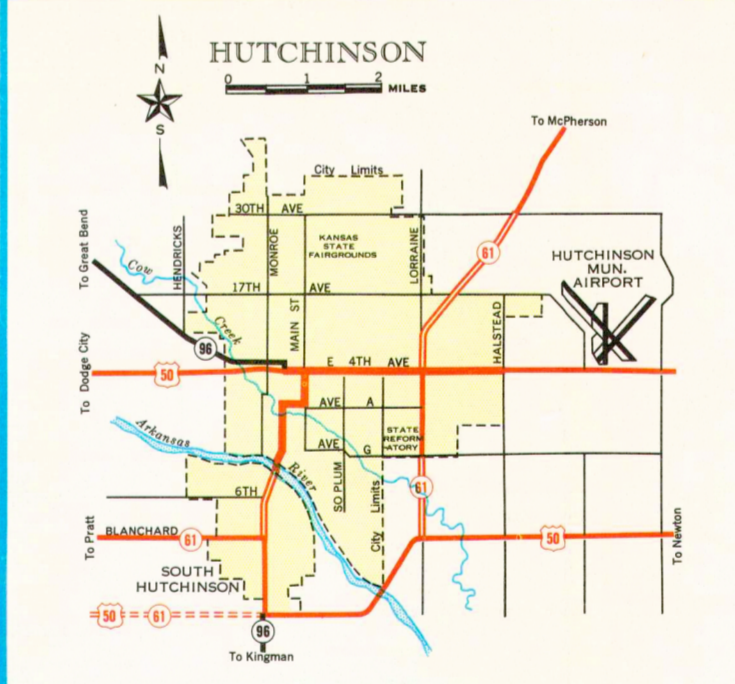
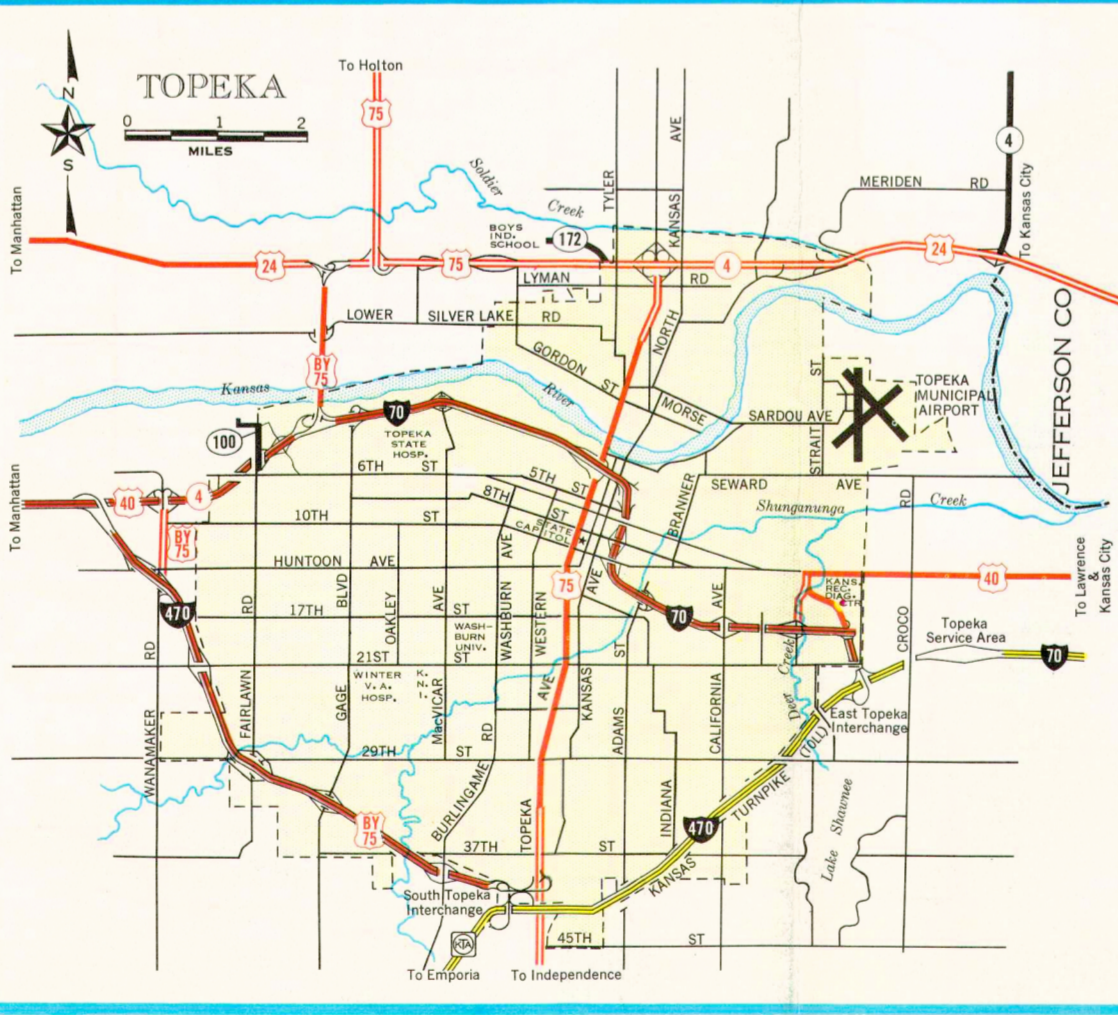
Tuttle Creek Reservoir  
Manhattan




Eisenhower Museum  
Abilene



Fort Larned  
Larned



  
ROBERT B. DOCKING  
Governor of Kansas

This is your invitation and guide to the highways and byways of Kansas. Drive our fine, high speed freeways and through highways or enjoy a more leisurely pace on our secondary routes. Watch the ever changing panorama that is Kansas unfold as you cross the state.

Pause at our excellent Highway Safety Rest Areas; take time to stop at our beautiful state parks and lakes; visit our historical sites. Kansas are never too busy to be hospitable.

Our blend of agriculture, business, industry, transportation, education, religion and government is providing a new color for our rainbow—"PROGRESS!"

May your trip be pleasant and safe.

Sincerely,  
*Robert B. Docking*

STATE HIGHWAY COMMISSION OF KANSAS  
JOHN D. MONTGOMERY, Director of Highways  
WALTER JOHNSON, State Highway Engineer

COMMISSIONERS  
Harry "Bud" Timberlake, Leavenworth  
J. Rex Duwe, Lucas  
E. W. Pete Armstrong, Wichita  
Bob Kent, Salina  
Karl A. Brueck, Paola  
Louis Kampshroeder, Garden City



1967

# KANSAS

SAFETY REST AREAS  
CENTERED ALONG I-70

OFFICIAL STATE HIGHWAY MAP