

# 1861-100 YEARS OF ACHIEVEMENT-1961



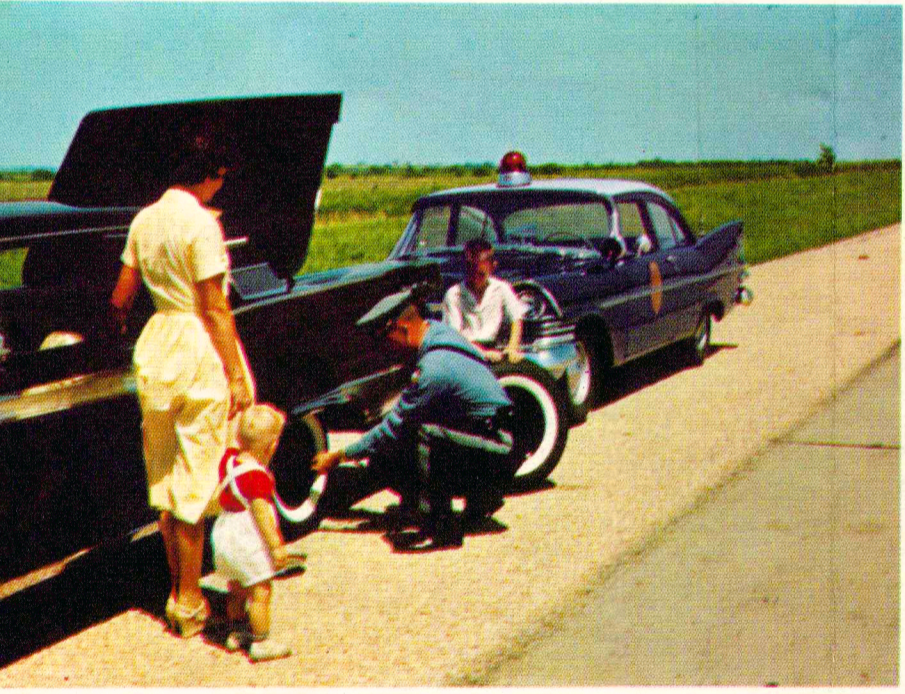
Front Street Replica—Dodge City



Flint Hills Round-Up—Near Emporia



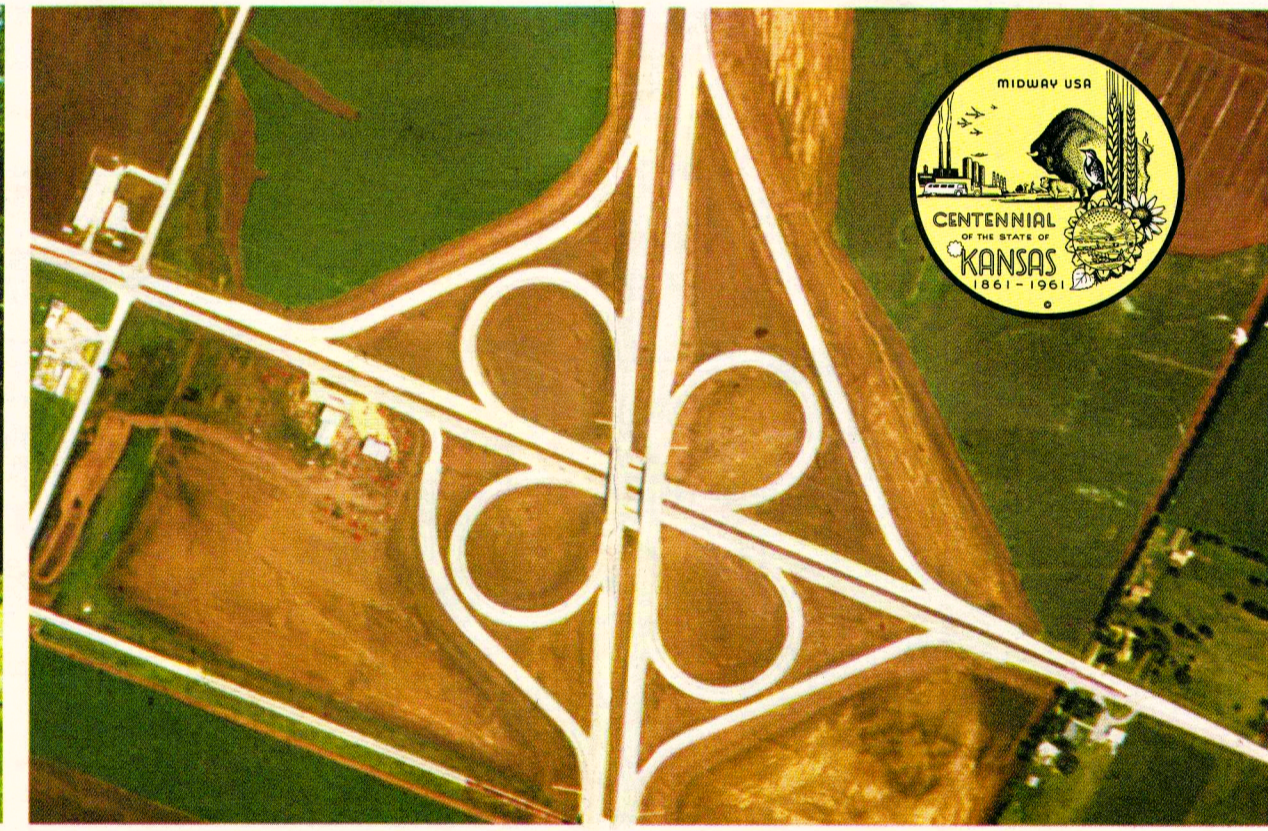
Shawnee Methodist Mission—Fairway



Highway Patrolman Lends a Hand



First Territorial Capitol—Ft. Riley



Interstate 35 Interchange—Near Ottawa



Present Capitol Building—Topeka



Old Abilene Town—Abilene



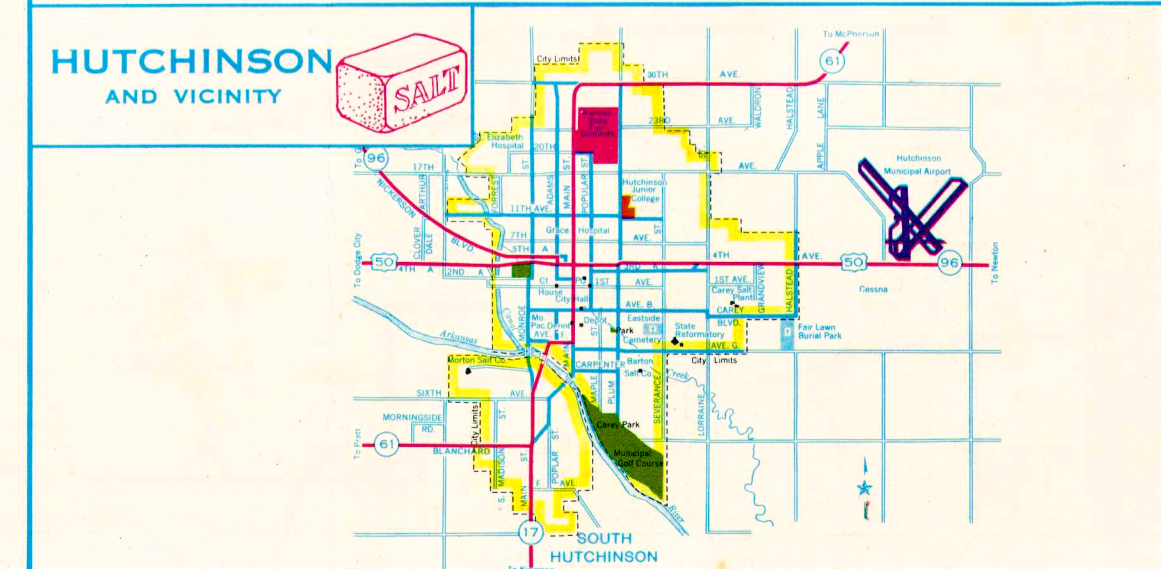
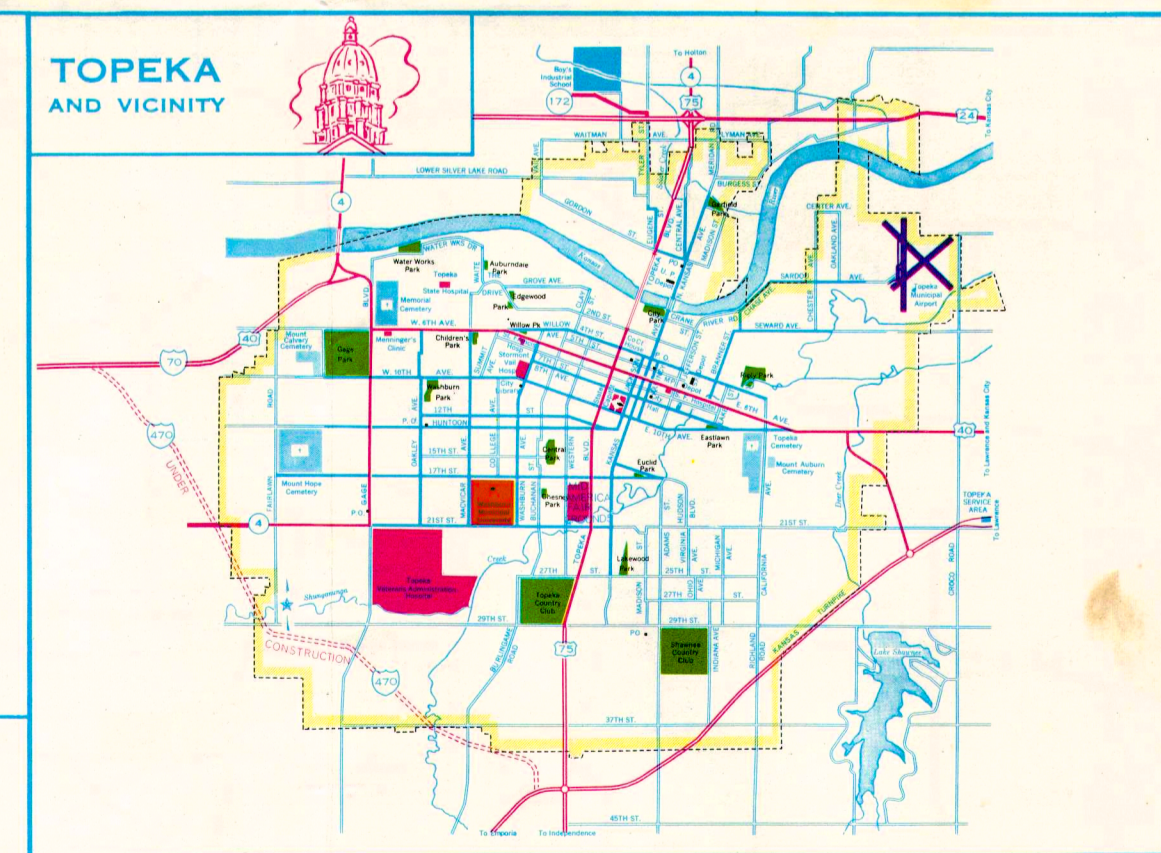
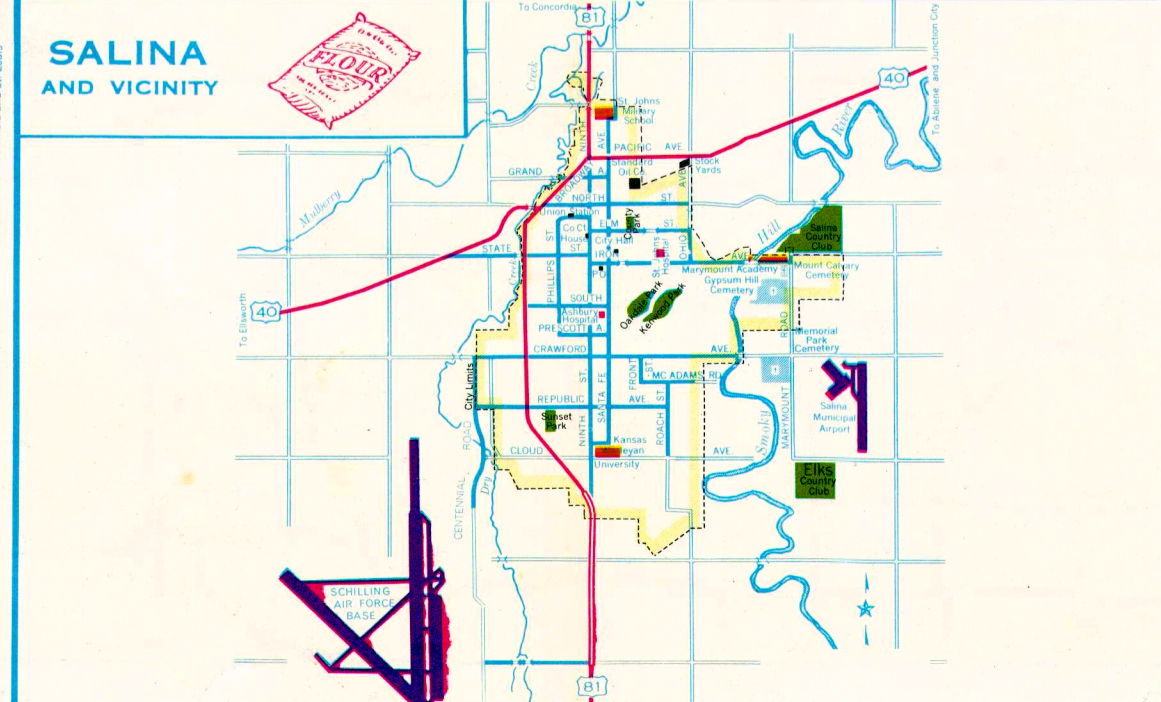
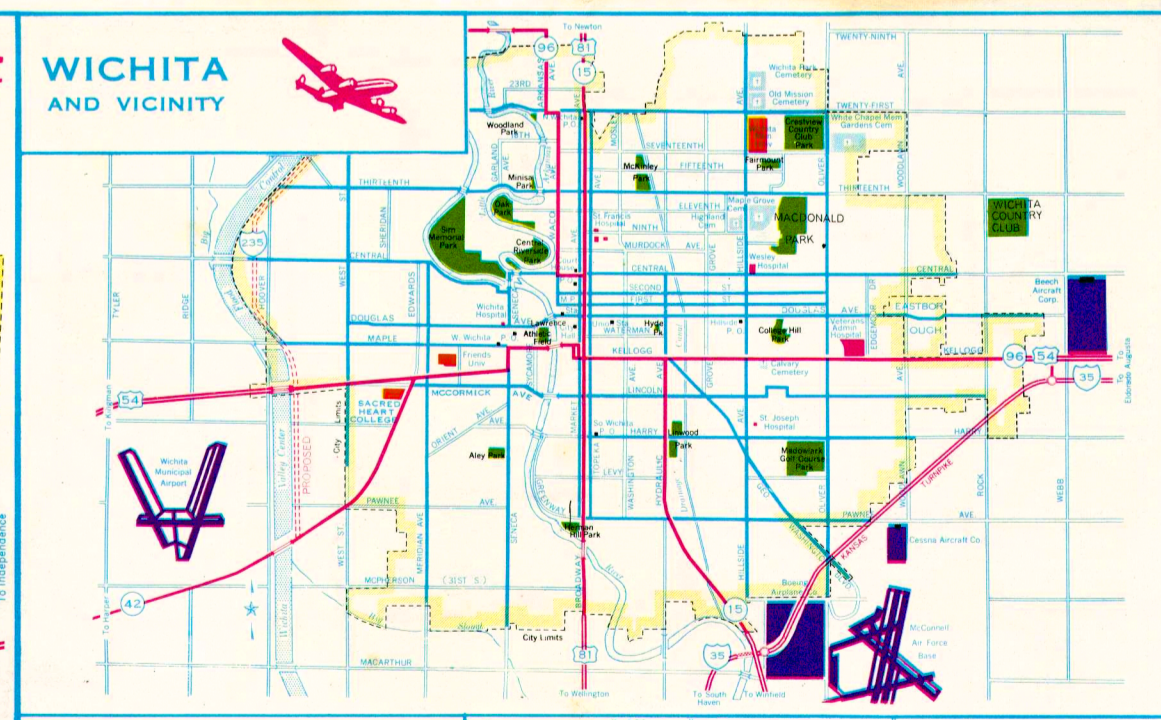
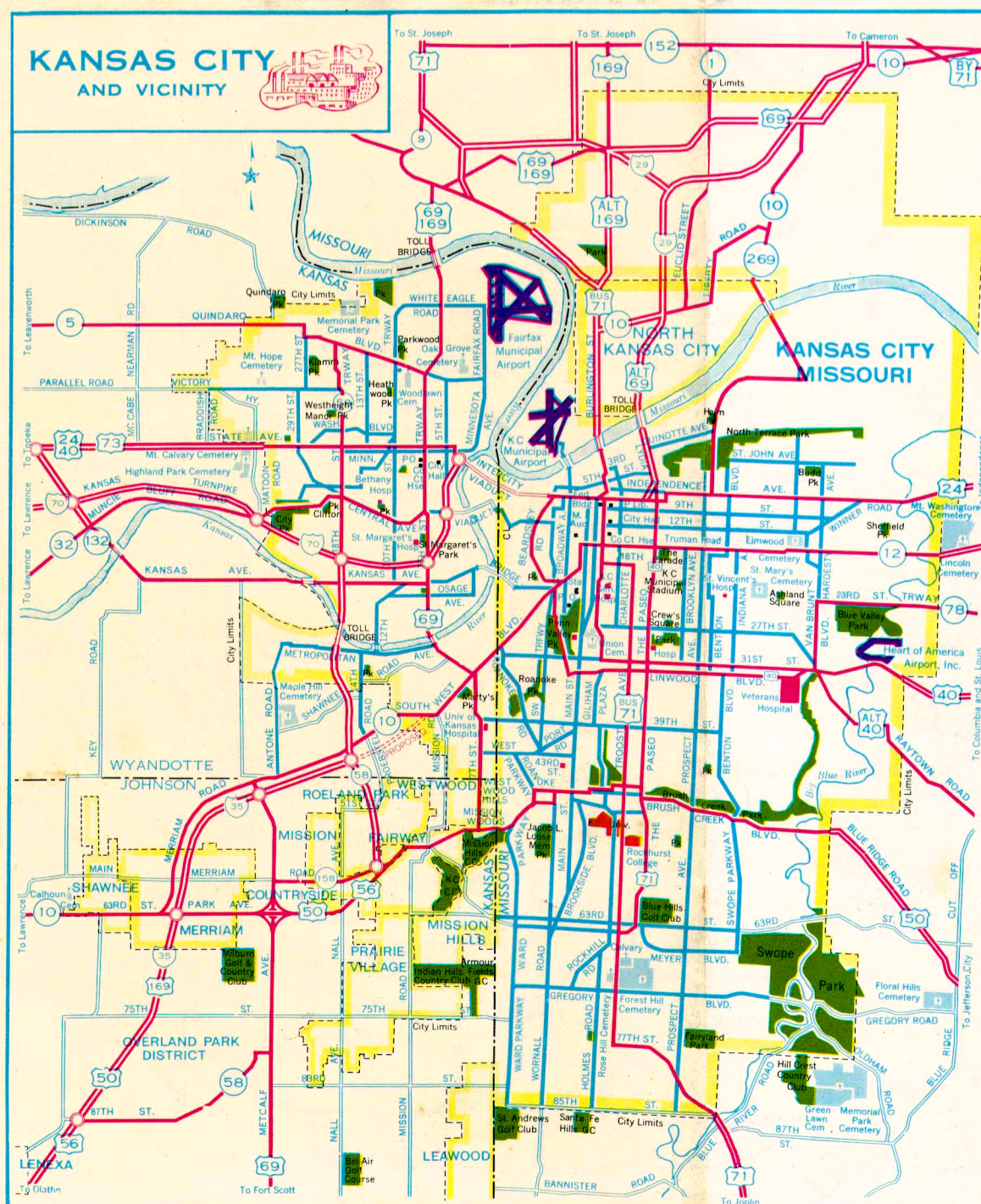
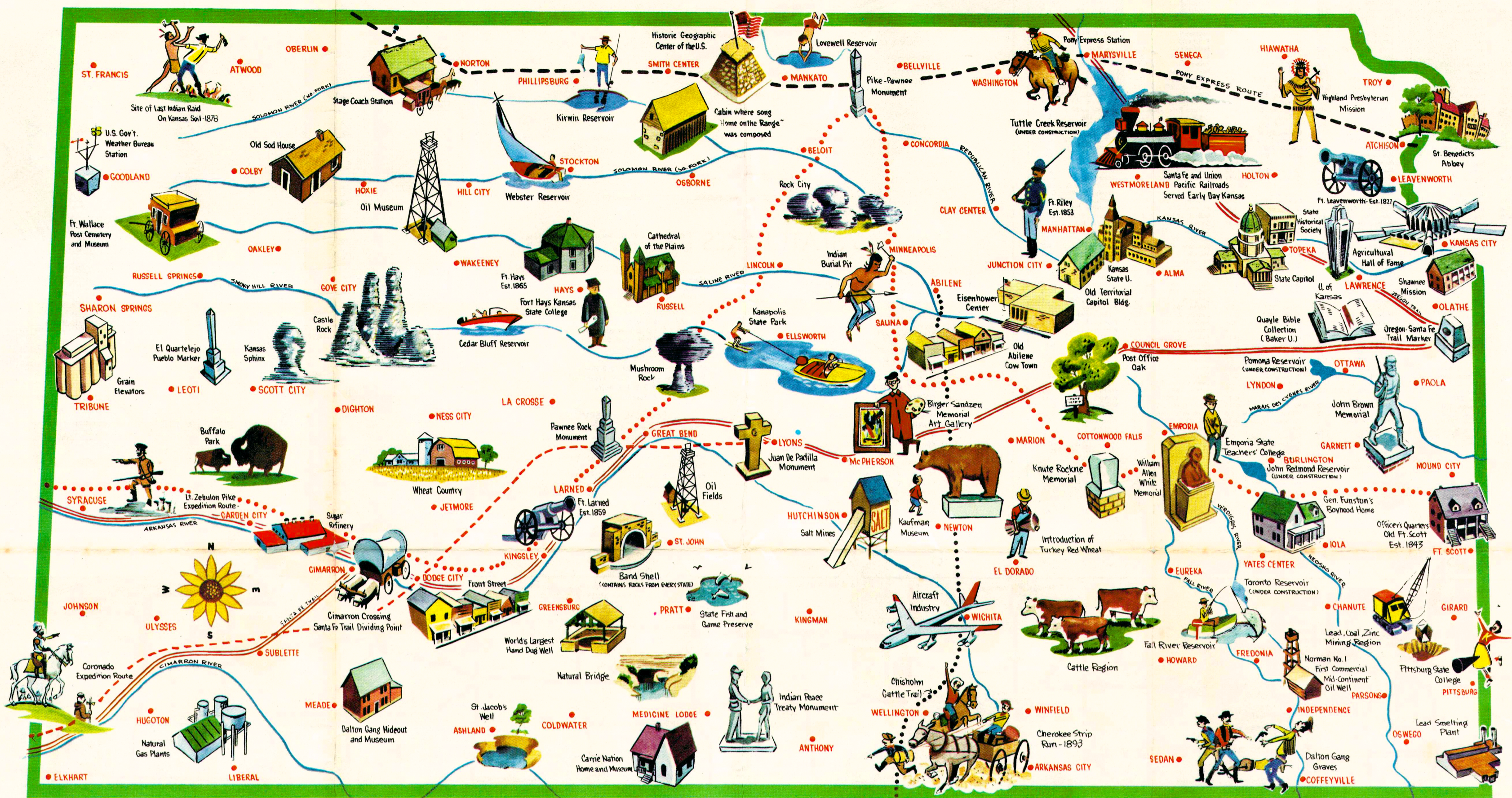
"Wheat State" Harvest—Hutchinson



"Toadstool" Picnic Shelter—Kanopolis State Park



Transportation Serves Industry—Kansas City



Governor Docking  
Mrs. Docking

Governor's Mansion—Topeka

**"From Our Home to Your Home"**

Kansas, rich in history, achievement and tradition, welcomes you to enjoy its hospitality as it marks its Centennial year. You will find our people friendly, and delighted to meet you. Kansas offers extensive recreational facilities, beautiful roadside parks and museums for your visiting pleasure. As you travel our modern highways, designed for comfort and safety, you are sure you will thrill to our scenic beauty and century of progress.

You are urged to linger awhile—taking plenty of time to enjoy Kansas as you travel. Our best wishes for a pleasant trip. We invite you to return often.

Sincerely,  
Virginia and George Docking

"MIDWAY USA"

# KANSAS

OFFICIAL CENTENNIAL MAP

1861 1961

STATE HIGHWAY COMMISSION OF KANSAS

GEORGE DOCKING, Governor of Kansas  
MAURICE MARTIN, Director of Highways  
WALTER JOHNSON, State Highway Engineer

State Highway Commissioners

Joseph J. Polzner, Kansas City  
John D. Montgomery, Junction City  
Richard M. Driscoll, Russell

Jack L. Goodrich, Parsons  
G. I. Robinson, Ellwood  
Louis Kampschroeder, Garden City