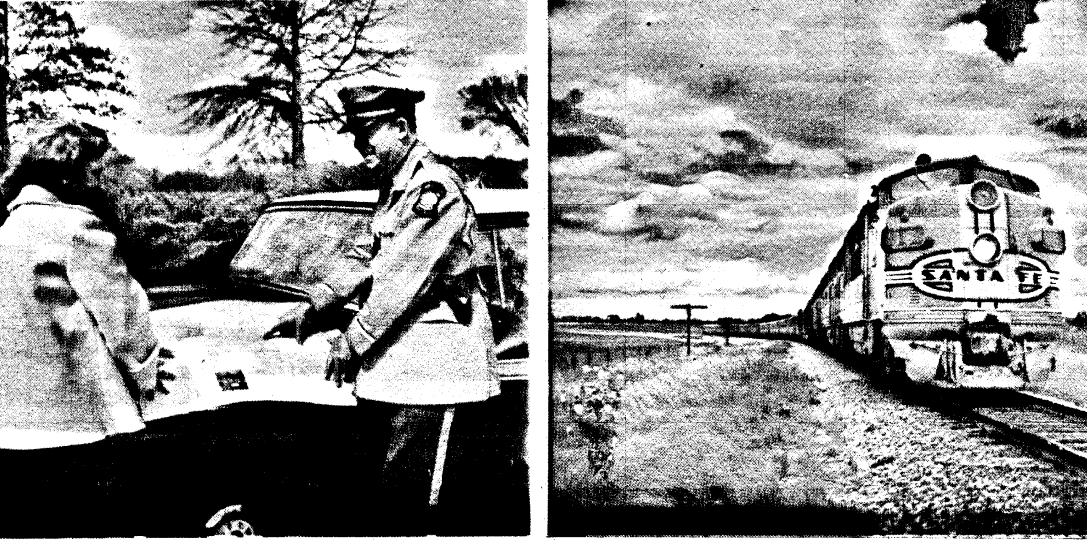
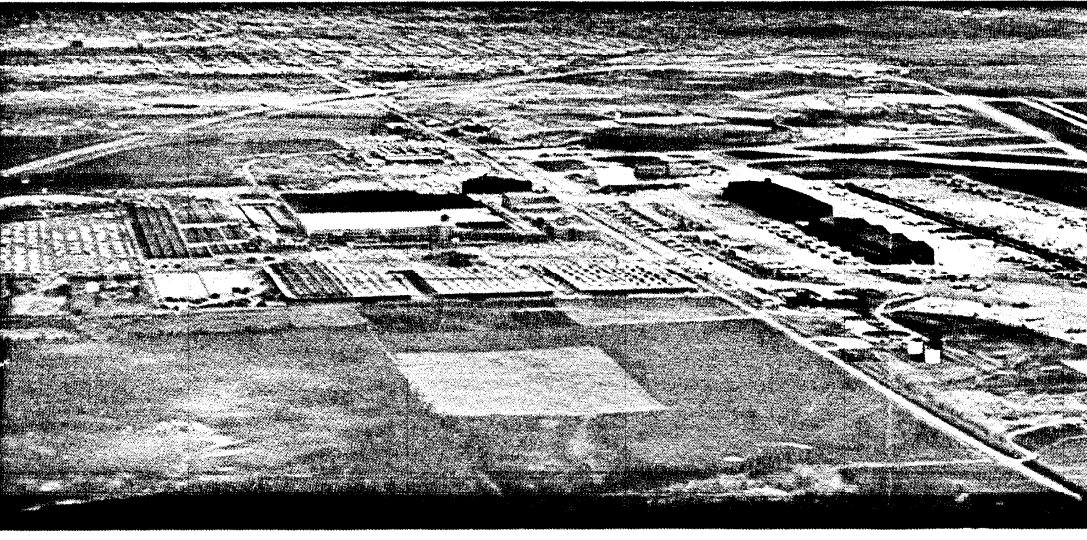


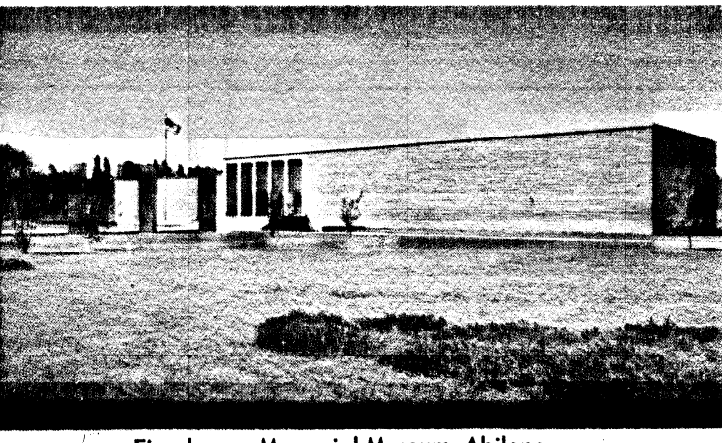
State Capitol Building, Topeka



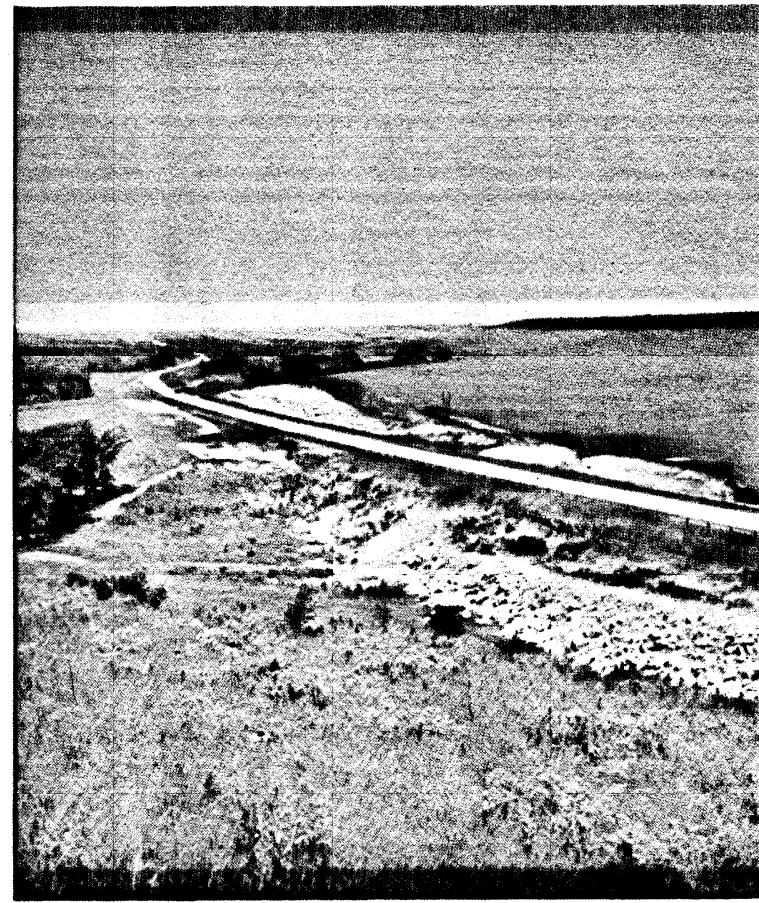
The State Highway Patrol Kansas Corporation, One of Nation's Largest



Boeing's Aircraft Plant, Wichita



Eisenhower Memorial Museum, Abilene



Kansas Valley, Hillside and Highway



A Wheat Harvest Scene



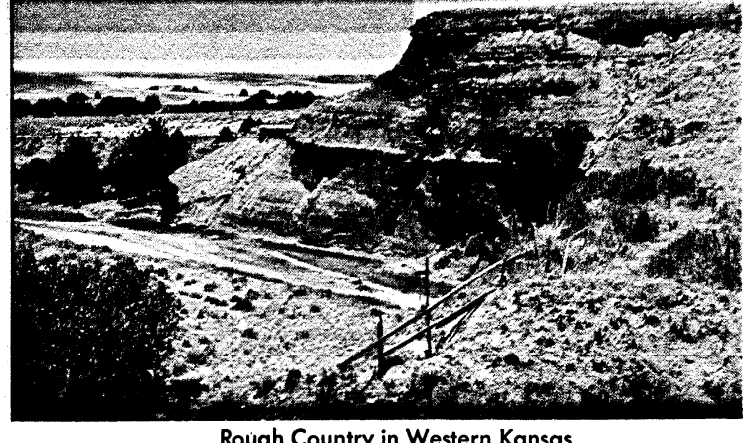
Good Fishing in the Lakes



Scene in Wichita's 'Cow Town'



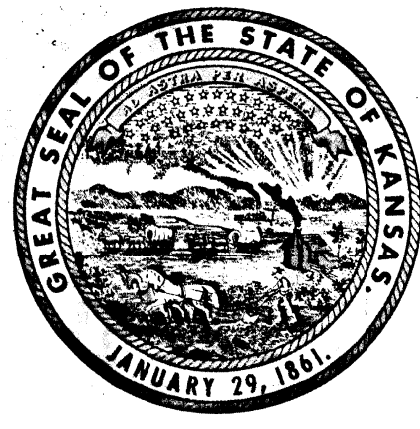
Beech Aircraft, Wichita



Rough Country in Western Kansas

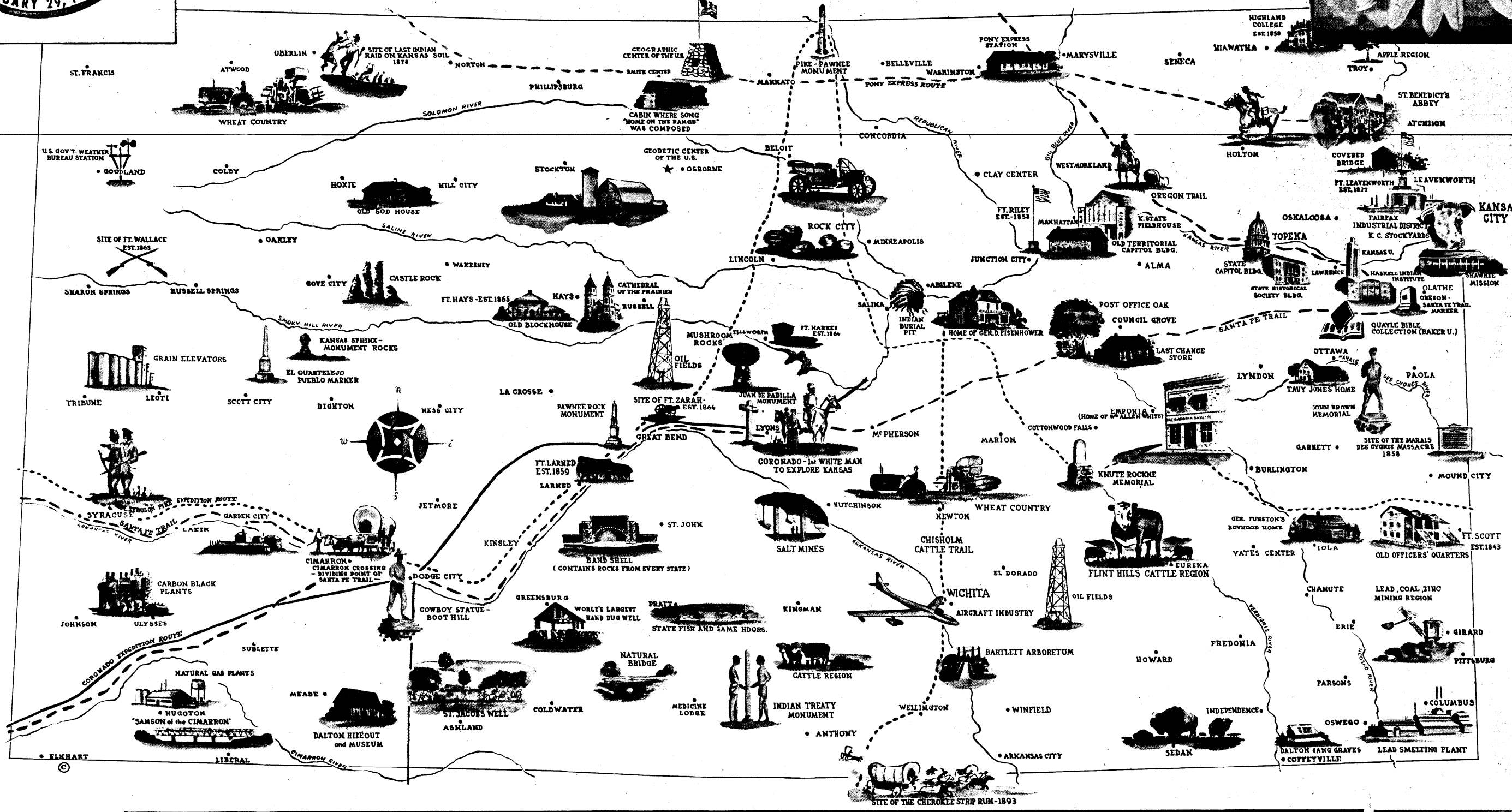


A Turnpike Interchange

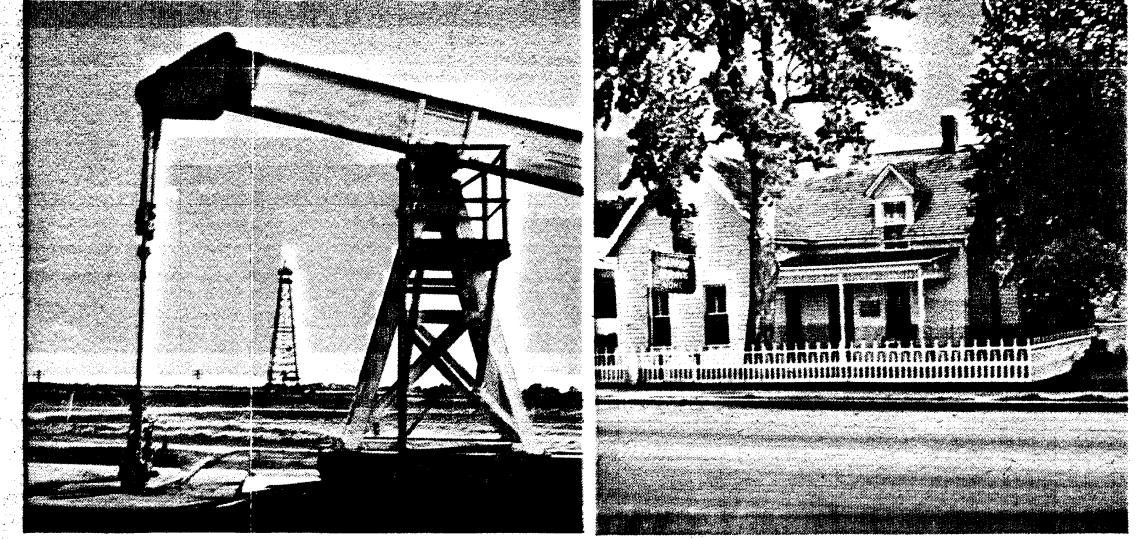


Welcome to Kansas

YOU WILL ENJOY YOUR VISIT HERE



State Office Building, Topeka

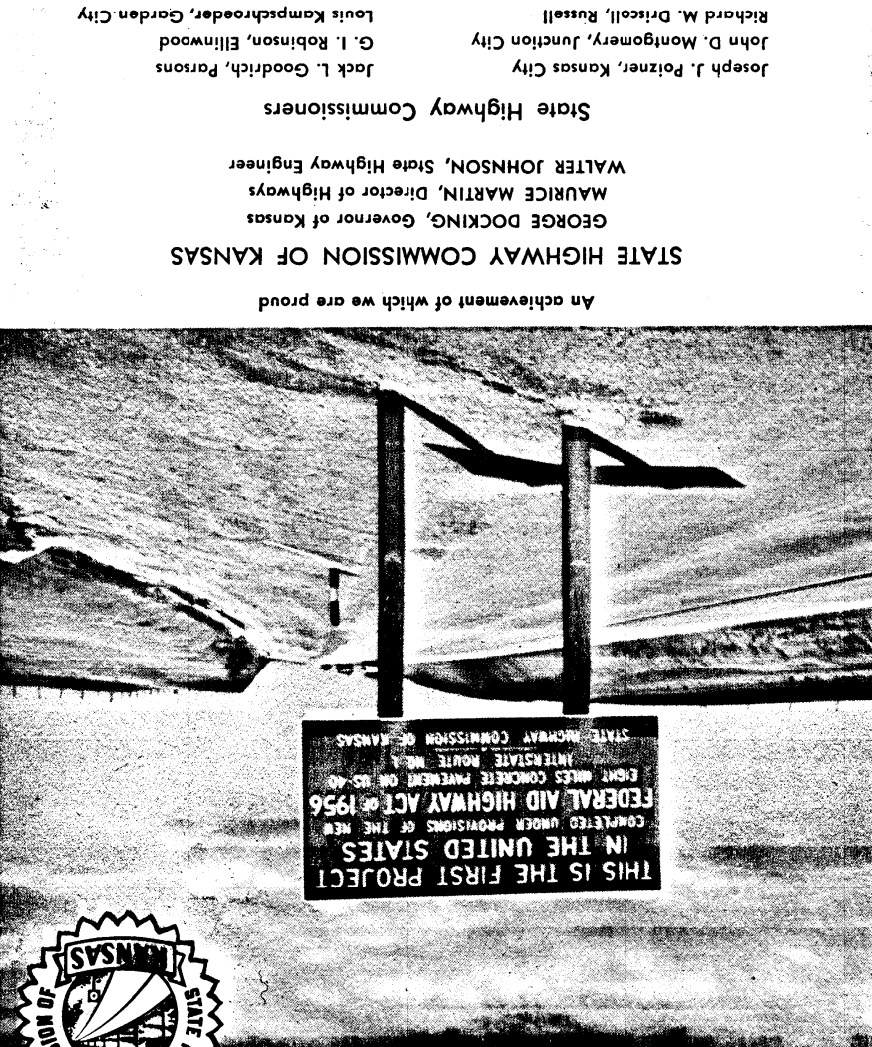


A Kansas Oil Field Walter Chrysler Boyhood Home, Ellis



Sod House at Colby

A friendly, interesting state—that's Kansas. And fine highways lead you to every part of it. While driving in this state, travelers will find many beautiful rural scenes, clean and progressive cities, excellent and hospitable tourist accommodations. In virtually every area one may see progress in industries including oil, wheat, cattle and aircraft production. Kansas is in the very heart of the nation. The exact center of the United States is marked by a park monument near Lebanon north of the junction of US-36 and US-281 in Smith county. This is the land of the great cattle trails, the cowboy, gunfighter and courageous marshal of the early west. It is a state which has made much of this nation's history. It continues to make history today in agricultural production, oil, gas, salt, aircraft, farm machinery, boots and countless other items. Many points of interest are pictured in drawings and photos on this map. You are invited to visit as many of them as possible. You will enjoy Kansas and its friendly citizens. It will add much enjoyment to your trip if you take just a little longer and see a little more while you are driving through this state.



KANSAS

