

Avoid Accidents Speed VICTORY

Tourists are cordially invited to visit Kansas where State Highways are patrolled by carefully trained and equipped personnel to insure safe and pleasant travel. Patrolmen are constantly on the alert to give assistance to motorists who may need highway information, have flat tires, or run out of gasoline while on a highway.

INFORMATION FOR MOTORISTS
(War Speed 35 M.P.H.)
Cars... Business District—20 M.P.H.
Residence District—30 M.P.H.
Open Highway—reasonable and prudent.
Buses... Passenger—55 M.P.H.
School—35 M.P.H.
Trucks... Under 5,000 lbs.—35 M.P.H.
Over 5,000 lbs.—40 M.P.H.

HAND SIGNALS
Left hand out straight for left turn
Left hand dropped for stop
Left hand up for right turn

Do not cross center line if there is a second line in your lane. Do not pass on curves, hills, or intersections. Be as considerate of motorists as you are of motorists whom you entertain in your bank.

**When Accidents Occur
Don't Be There.**



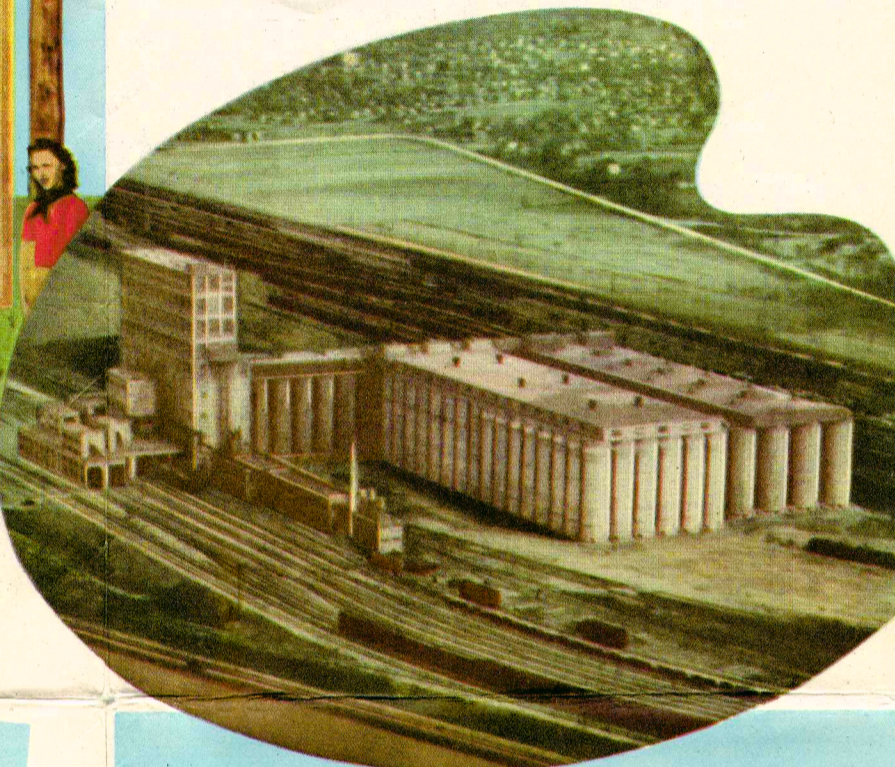
Facts About Kansas

First in Wheat—First in Flour Milling—First in Alfalfa Seed—First in Wheat Storage Capacity—First in Volcanic Ash—First in Newspapers per Capita.
Produces annually 400 million dollars of farm crops—250 million dollars of livestock and poultry—175 million dollars of minerals.
Outranks 39 states in mineral production—Produces annually five times the mineral wealth of Alaska.
More than 2,600 manufacturers and processors.
Geographic center of the United States and geodetic center of the North American continent.
Altitude varies from 660 feet in the eastern to 4,000 feet in the western part of the State.
Sunshine is the state's greatest climatic asset—More than 300 clear days per year.
Area 82,158 square miles—Population (1940) 1,801,028.
18 principal rivers draining 4 watersheds.
More than 13,000 acres of recreational areas containing over 4,000 acres of water.
The Name Kansas, derived from the Kansas Indians, means "People of the South Wind."
21st state admitted to the Union—January 29, 1861.
105 counties represented in the state legislature by 125 representatives and 40 senators—Legislature convenes biennially in odd numbered years at Topeka, the state capital.

STATE MOTTO... Ad Astra Per Aspera (To the stars through difficulties)
STATE BIRD... Western Meadow Lark STATE TREE... Cottonwood
STATE FLOWER... Sunflower STATE NICKNAME... Sunflower state

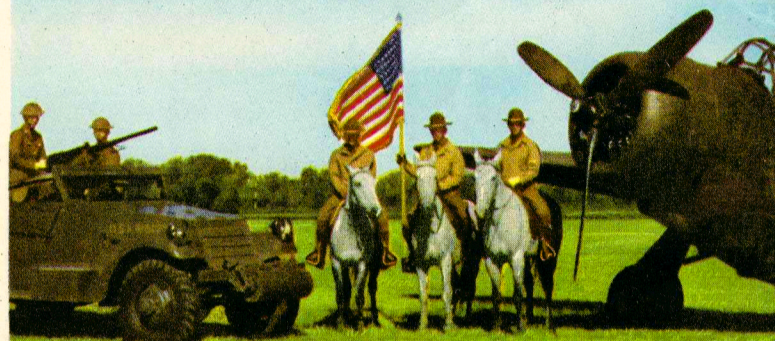
Investigate Kansas for good living conditions, pleasant environment, and outstanding industrial opportunities.
KANSAS INDUSTRIAL DEVELOPMENT COMMISSION
801 HARRISON
TOPEKA, KANSAS

Santa Fe Elevator "A"
10,200,000 Bushels of Wheat
Largest in the United States
Near Main Highways,
Kansas City, Kansas



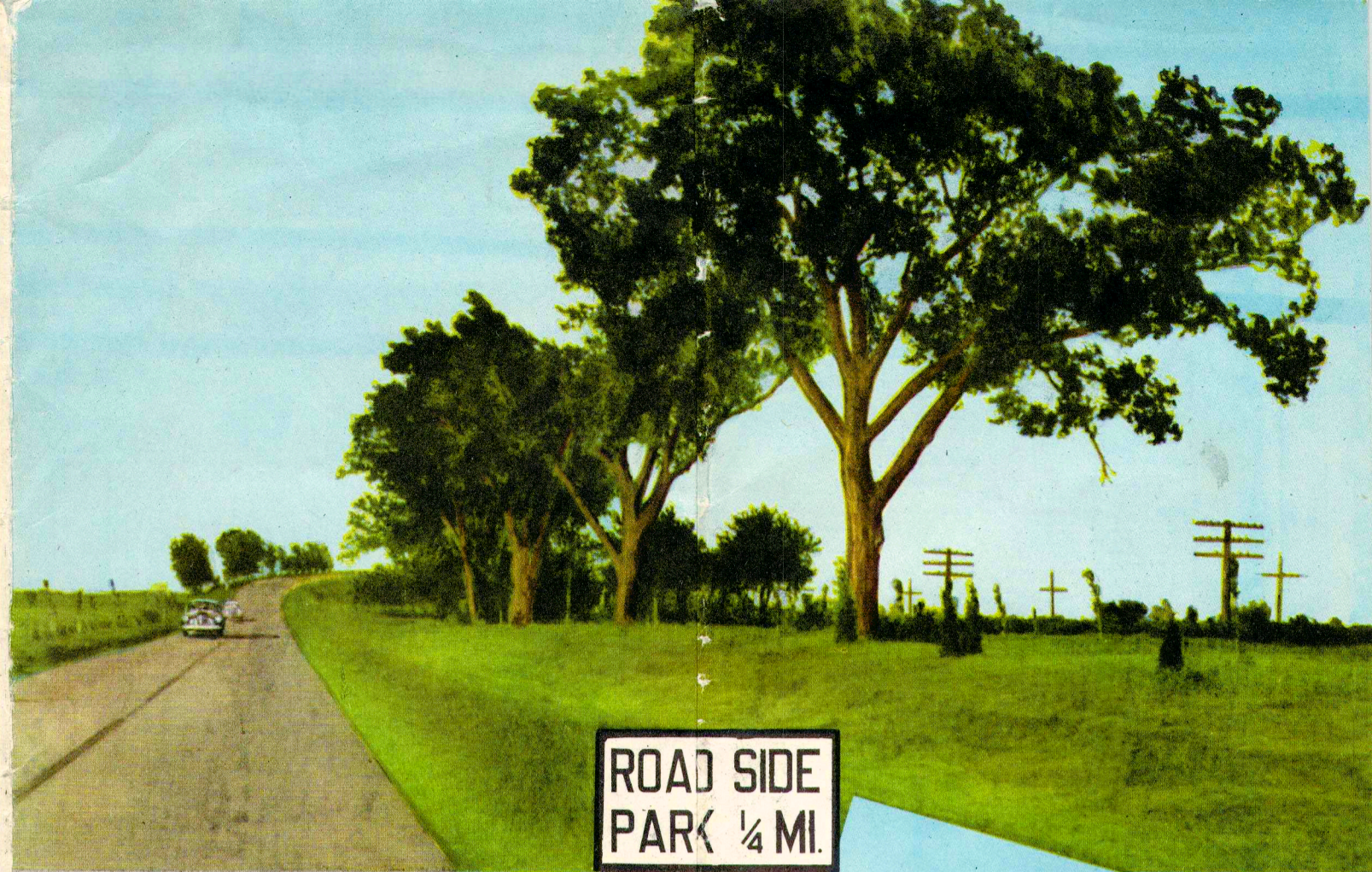
Travel KANSAS

CROSS-ROADS OF A CONTINENT



ISSUED 1945
STATE HIGHWAY COMMISSION OF KANSAS
TOPEKA
GOVERNOR ANDREW F. SCHOEPEL
D. J. FAIR, DIRECTOR
R. C. KEELING, HIGHWAY ENGINEER
F. QUENTIN BROWN, SECRETARY
COMMISSIONERS BY DIVISIONS
FIRST—H. K. SNIDER FIFTH—ROY W. COX
SECOND—W. S. ARBUTHNOT SIXTH—GUY RHEA
THIRD—C. L. CUSHING
OFFICIAL MAP

KANSAS in DEFENSE
Food—Fiber—Minerals—Agriculture—Industry



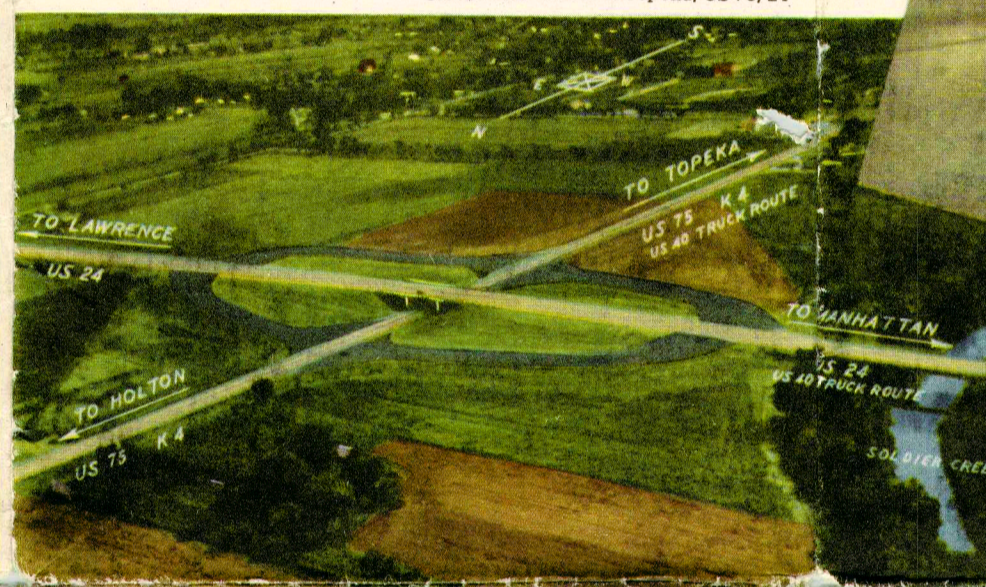
Broad Highway, Stately Trees, Roadside Park
US-24, 40, near Belvue

**ROAD SIDE
PARK 1/4 MI.**

Watch for this Sign



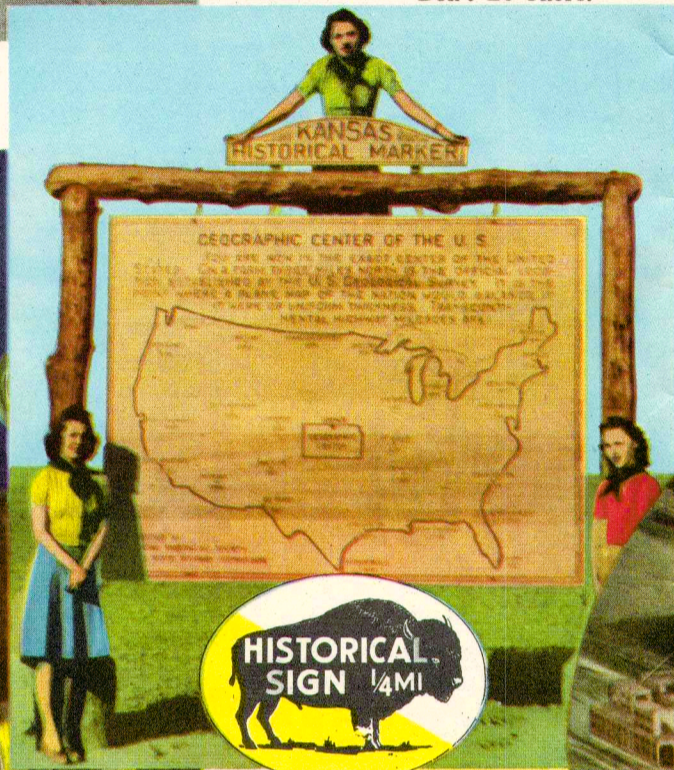
Over and Under for Safety
"Clover Leaf" North of Topeka, US-75, 24



Four Lanes, Medial Divider
West of Kansas City, Kansas, US-24, 40



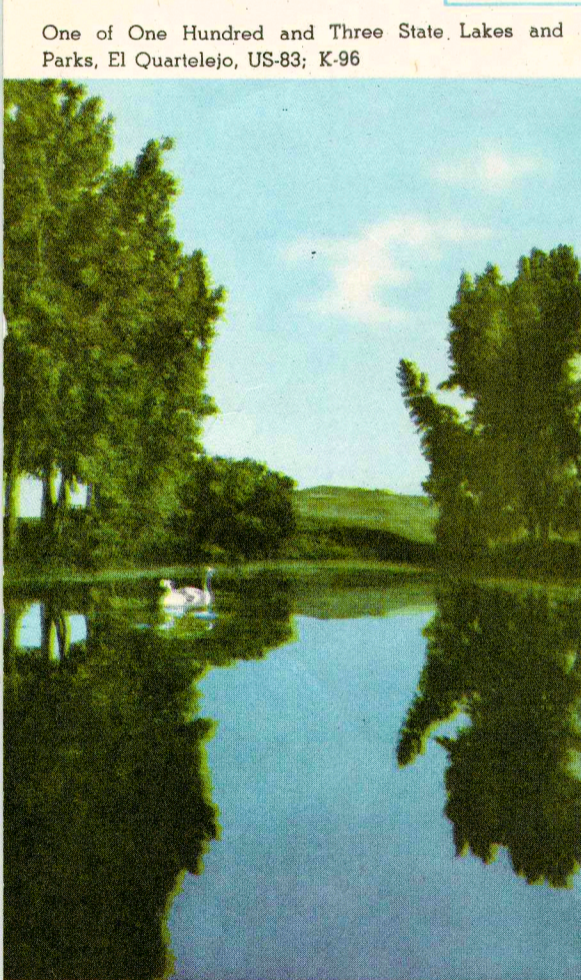
Gasoline Making at Night
Fractionating Tower (Cracking Still)
Oil Refinery, US 54, 77



**HISTORICAL
SIGN 1/4 MI.**

Watch for this Sign

Heart of America's Sweethearts
Betty, Jean and Beth Merrill
Triplets at U. S. Geographic
Center, Lebanon, US-36, 281



One of One Hundred and Three State Lakes and
Parks, El Quartelejo, US-83; K-96

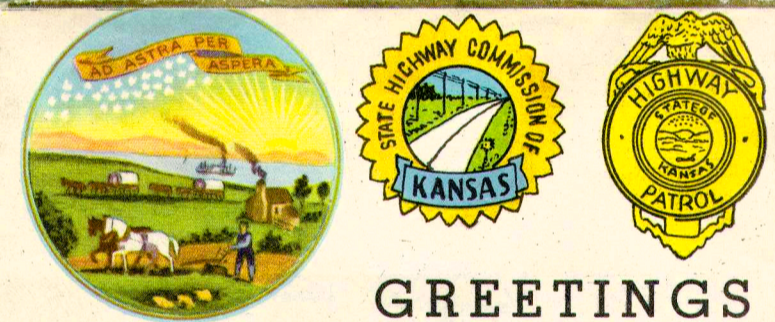


Native Born Kansans Hold to
Many Religions of their Pioneer
Forefathers
Cathedral, K-10, Topeka

Shrine for Education; Prize-Winning Architec-
ture in Wichita High School North, near US-81,
54; K-15, 96



Ramparts on Coronado Heights
Picnic Mound near Lindsborg, US-81, K4
Spanish Saw These High Prairies 401 Years Ago



GREETINGS TO THE MOTORING PUBLIC

THROUGH the issuance of this highway map the State Highway Commission of Kansas extends to all America a hearty welcome. It is our hope it will be accepted as an expression of our sincere desire to serve you—to make your travels a bit more pleasant.

Our state is comprised of an area which offers a great and promising future in America, both in agriculture and industry. Today Kansas lives by the "open road." While she ranks 13th among the states in area, 29th in population, 15th in assessed valuation, 17th in motor vehicle registration, 1st in wheat production, 10th in corn, 11th in livestock and livestock products, 5th in oil, 3rd in salt, 6th in lead and zinc, and 5th in natural gas production, she ranks 2nd in the total road mileage (128,000 miles)—enough miles to reach around the earth 5 1/4 times.

The "open road" has contributed much to the economic and social achievements of the state and holds promise of playing a still greater part in providing adequate transportation to the state's increasing new business enterprises.

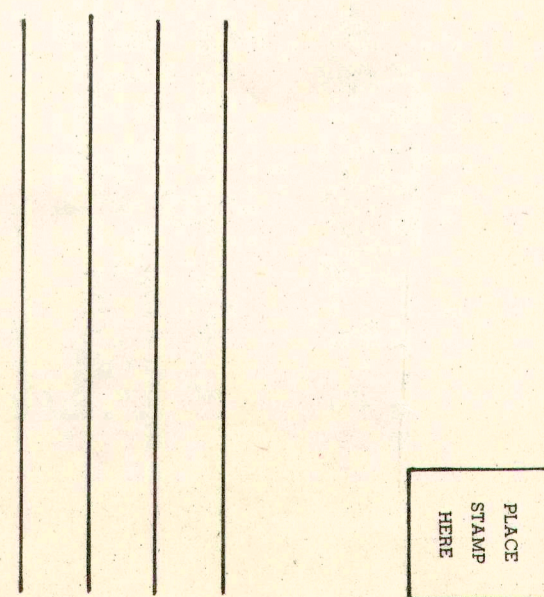
With the geographic center of the United States located in Kansas, the state's highways become truly the cross-roads of America.

STATE HIGHWAY SYSTEM MILEAGE BY SURFACE TYPES (9,372 miles)

Earth	348
Gravel, Stone and Chat	2,376
Bituminous	5,167
Concrete	1,359
Brick	131

As of January 1, 1944

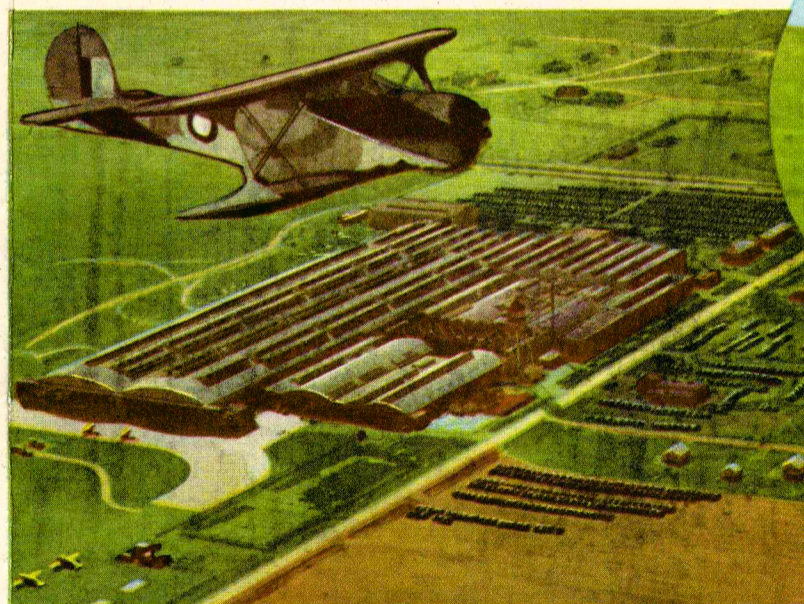
STATE HIGHWAY COMMISSION
D. J. FAIR, Director of Highways



PLACE
STAMP
HERE



Like Sentinels Guarding Oil and Gas Supply
Derricks on US-40, the 50s, 54, 75, 77, 81, 83, 160, 169, 270, 281



Kansas Keeps 'Em Flying
Aviation Production, US-
24, 40, 69, 54; K-15



Three Men on Two Horses
Monkey Drill
United States Cavalry
Fort Riley, US-40, 77



State House; Topeka, US-
24, 40, 75; K-4, 10
John Stuart Curry Murals
Memorial Building and
Museum Nearby