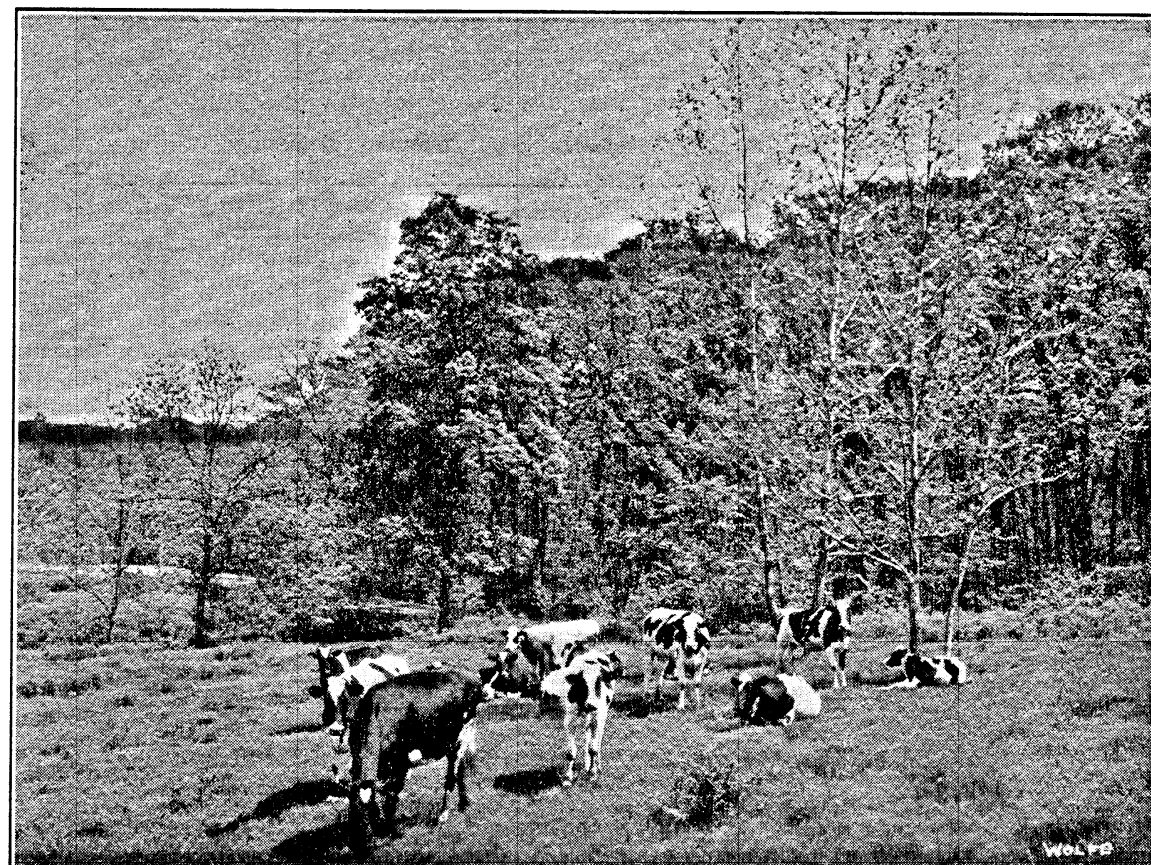
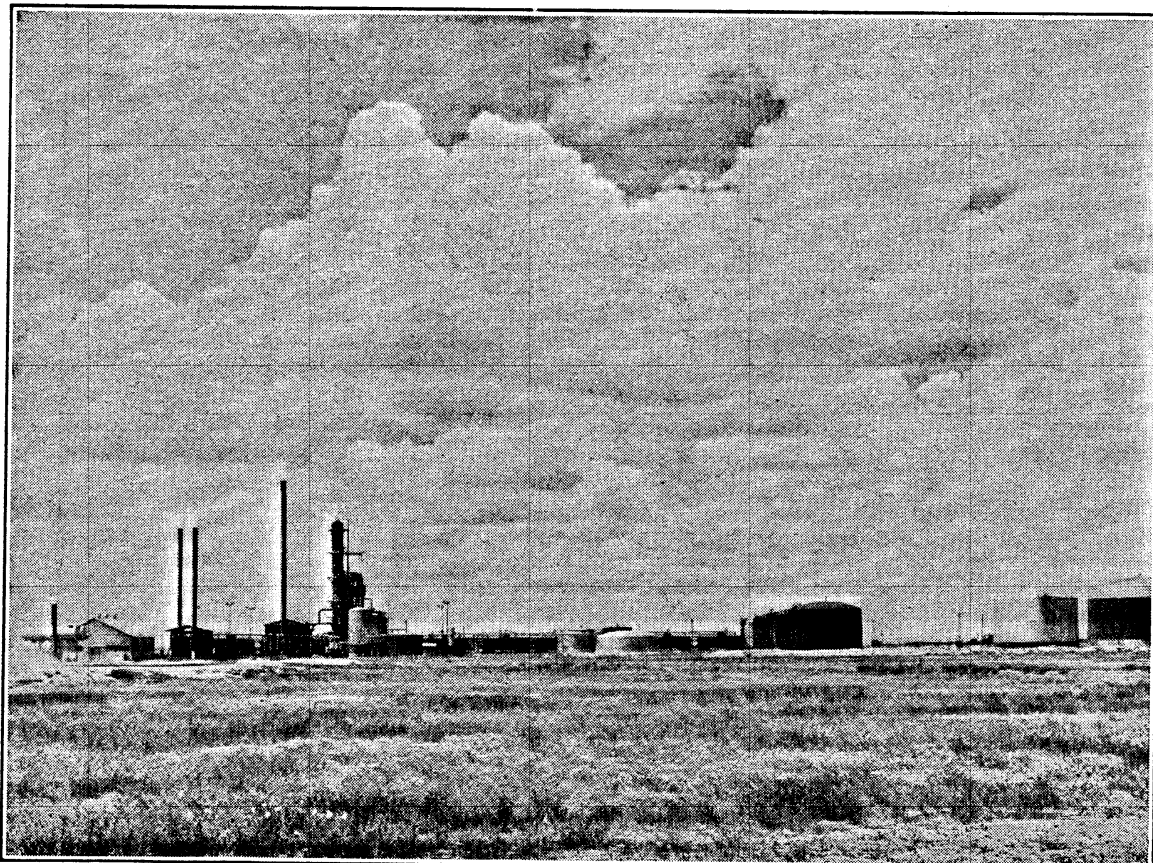


HORTON LAKE, BROWN COUNTY



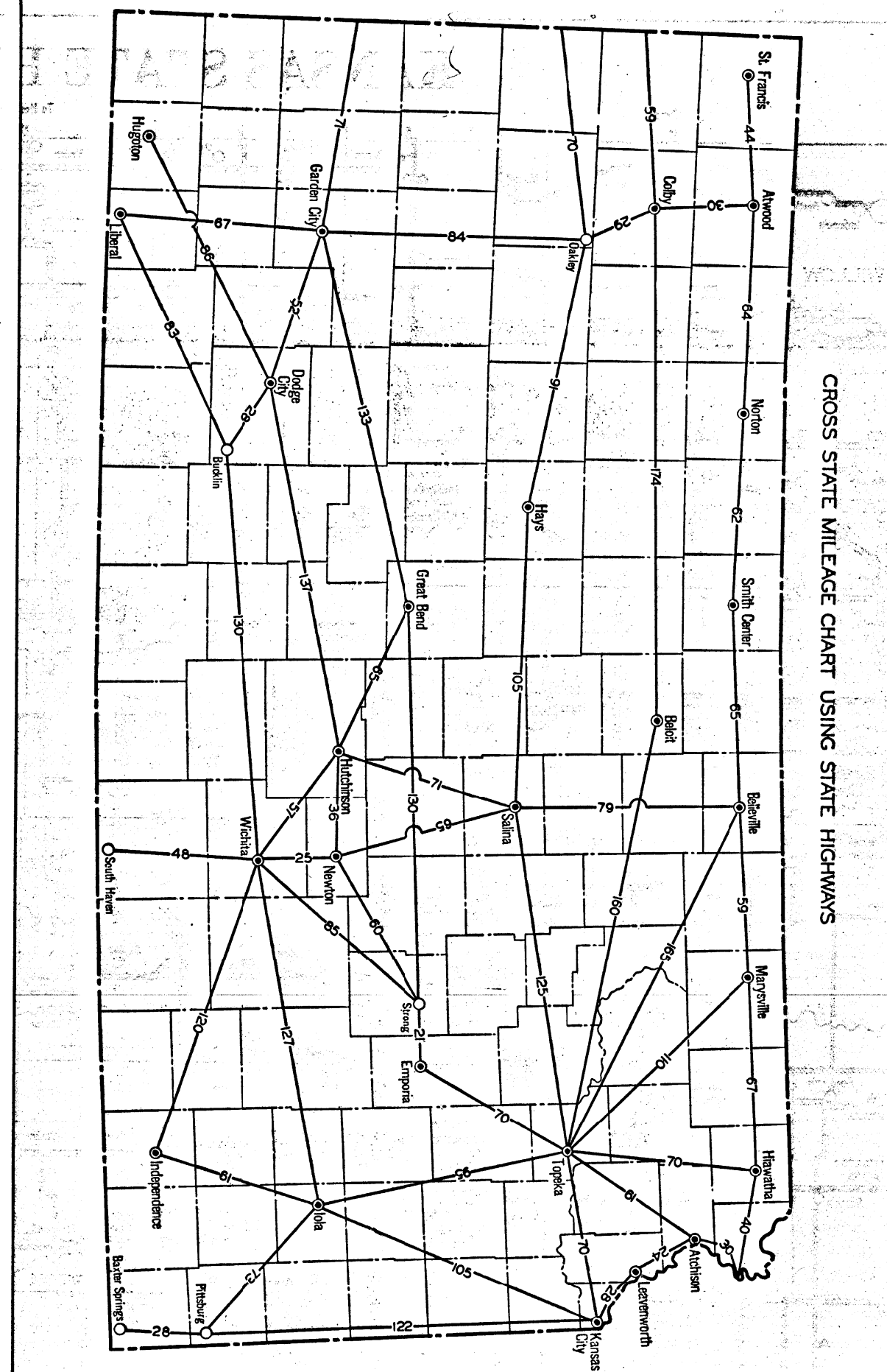
FARM SCENE NEAR TOPEKA



REFINERY IN SCOTT COUNTY



FT. LEAVENWORTH



CROSS STATE MILEAGE CHART USING STATE HIGHWAYS

# KANSAS



## DO YOU KNOW

The state law requires the driver of any vehicle involved in an accident in which there is personal injury, or property damage of fifty dollars or more, to make a report to the Motor Vehicle Commissioner within twenty-four hours. Those reports are to be made on forms furnished by that Commissioner and are obtainable from all sheriffs, police departments and highway patrolmen. In case of an accident, notify the sheriff of the county, the chief of police of the nearest city, any highway patrol station or patrolman.

You are required to have your driver's license with you at all times while operating a motor vehicle in the state.

It is unlawful to pass on hills or curves or to operate your car without due regard to conditions of the road or the traffic thereon.

The law also requires every vehicle operating on the highway to carry legible registration plates, front and rear. There is no period of grace for attaching these plates. They must be on the car when it is in operation. If one tag is lost the owner should make application to the Motor Vehicle Commissioner for a set of "L" tags.

While there is no maximum speed law in Kansas for either trucks or pleasure cars, the law is so worded that officers can make arrests for speeding. Section 32 of chapter 283, Laws of 1937, provides that "no person shall drive a vehicle on a highway at a speed greater than is reasonable and prudent under the conditions then existing."

The slow driver is a distinct menace on our highways. Persons who insist on driving at twenty to twenty-five miles per hour in heavy traffic on a through highway cause congestion and that frequently results in other travelers' taking unsafe chances to pass in heavy traffic.

Failure of travelers to properly signal turns and stops is the cause of numerous accidents. Every car driver should familiarize himself with the state law on this subject and should properly signal his operations. The law is strict and drivers should exercise caution by stopping at the signs protecting main highways.

The State Highway Patrol is conducting an intensive campaign against drunken drivers and all arrests for such violations are vigorously prosecuted.

Every member of the Kansas Highway Patrol has passed a course in Red Cross First Aid training and is qualified to render assistance to persons injured on highways. All highway patrol cars carry a first aid kit, extra gasoline, blanket, shovel, broom, fire extinguisher, hydraulic jack and tow chain. The patrolman will give assistance to distressed motorists.

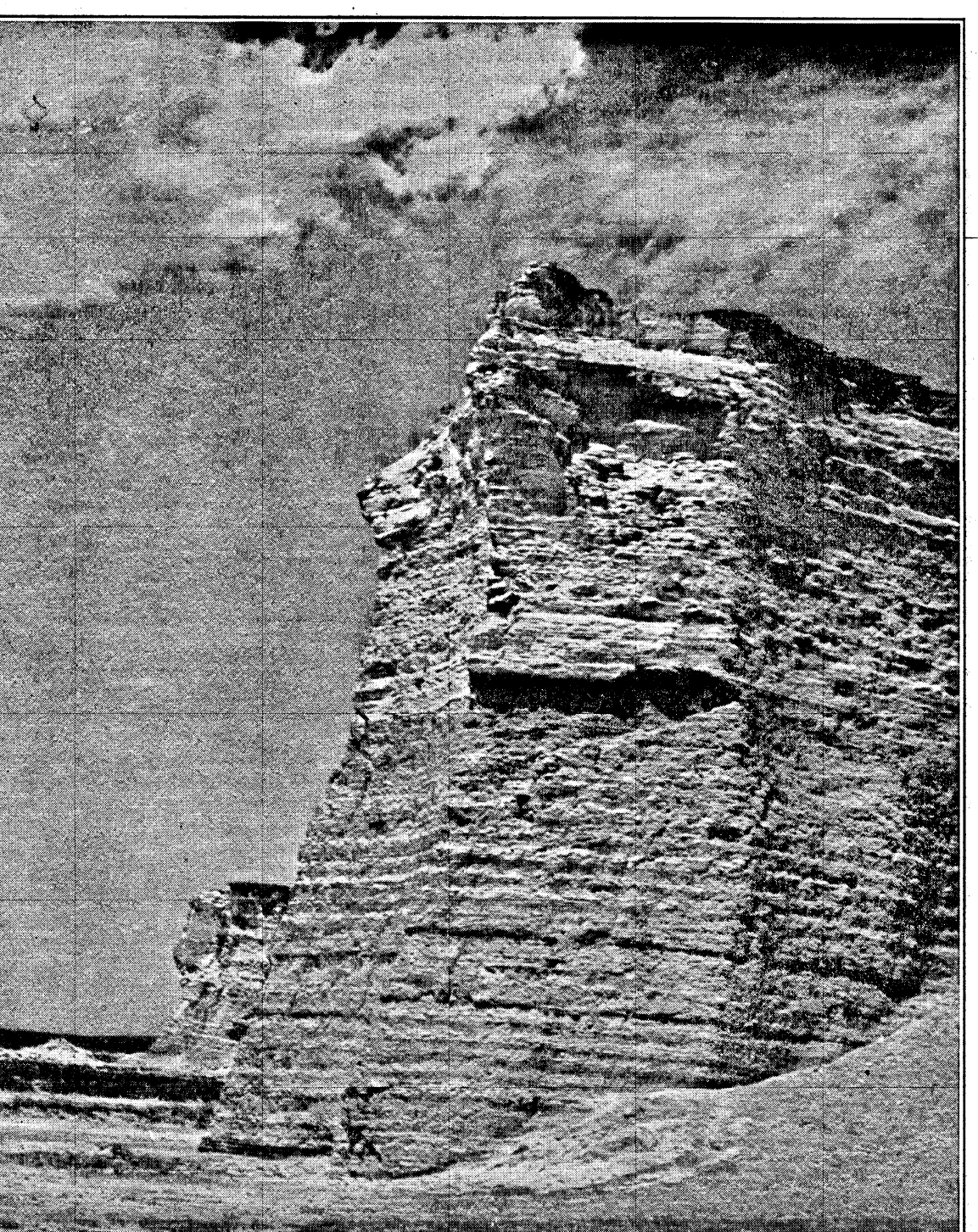
An automobile traveling 60 miles per hour goes 88 feet per second and requires 251 feet to stop with perfect four-wheel brakes on the best type of road surface under the most favorable conditions.

## DRIVE SANELY

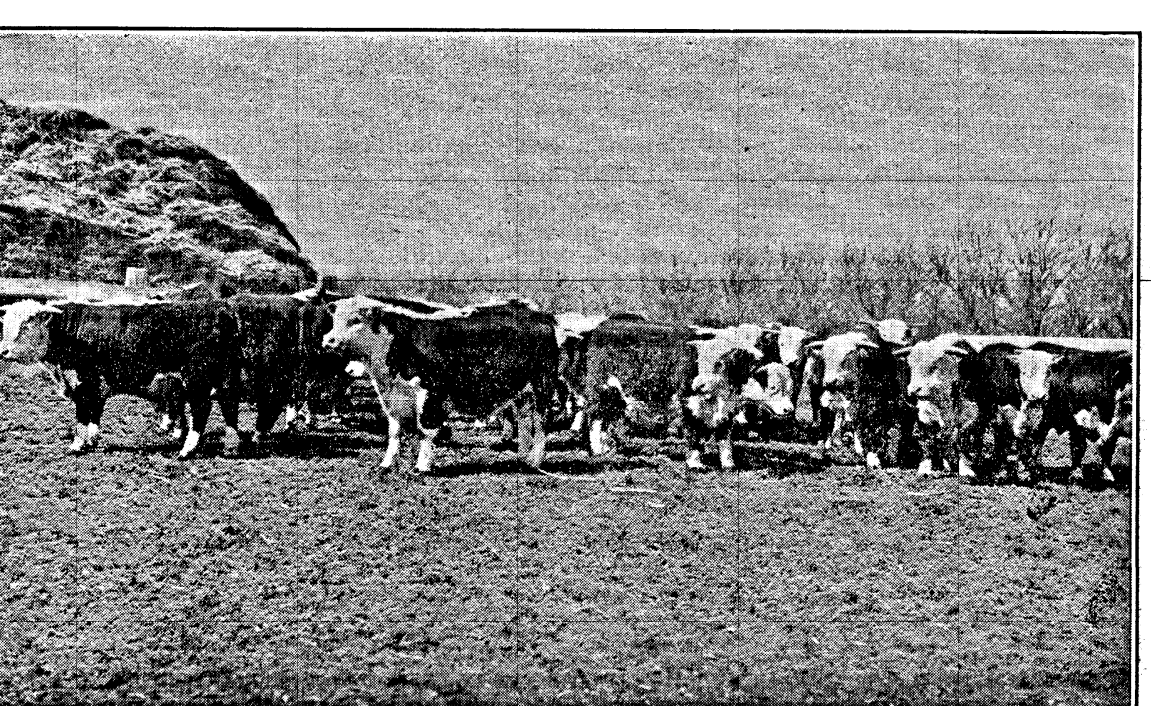
### THANK YOU

#### HIGHWAY PATROL OFFICE TELEPHONES

Arkansas City..... 2-5380	Parsons .....	750
Colby .....	Pittsburg .....	1666J
497	3702	
Garden City..... 820	Pratt .....	744
988	Salina .....	3165
Hays .....	Topeka .....	3349
1274	4330	
1276	4331	
Horton .....	5552	
485	2-3200	
Hutchinson .....	2-6355	
292	2-7976	
Independence .....	3-2668	
367	Dr. 6215	
Kansas City .....	2-5360	
2-8112	Wichita .....	2-8112
Larned .....	2-8762	
291	2849	4-1334
Lawrence .....	4308	Winfield .....
2817	1765	
Manhattan .....	208	Yates Center .....
4308	523	



Chalk deposit in Gove county near US 83. Erosion has cut out many fantastic shapes that take on resemblances to suit the imagination.



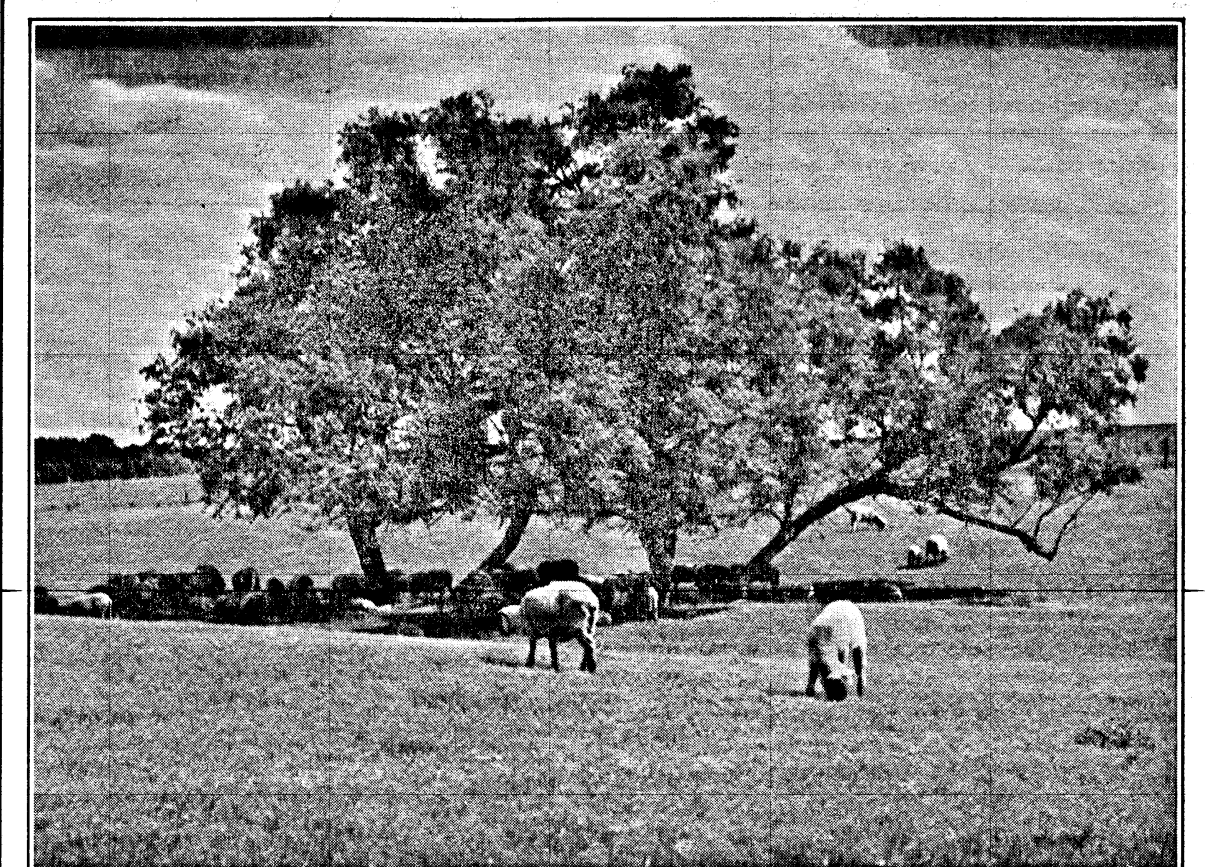
HEREFORDS NEAR GARDEN CITY



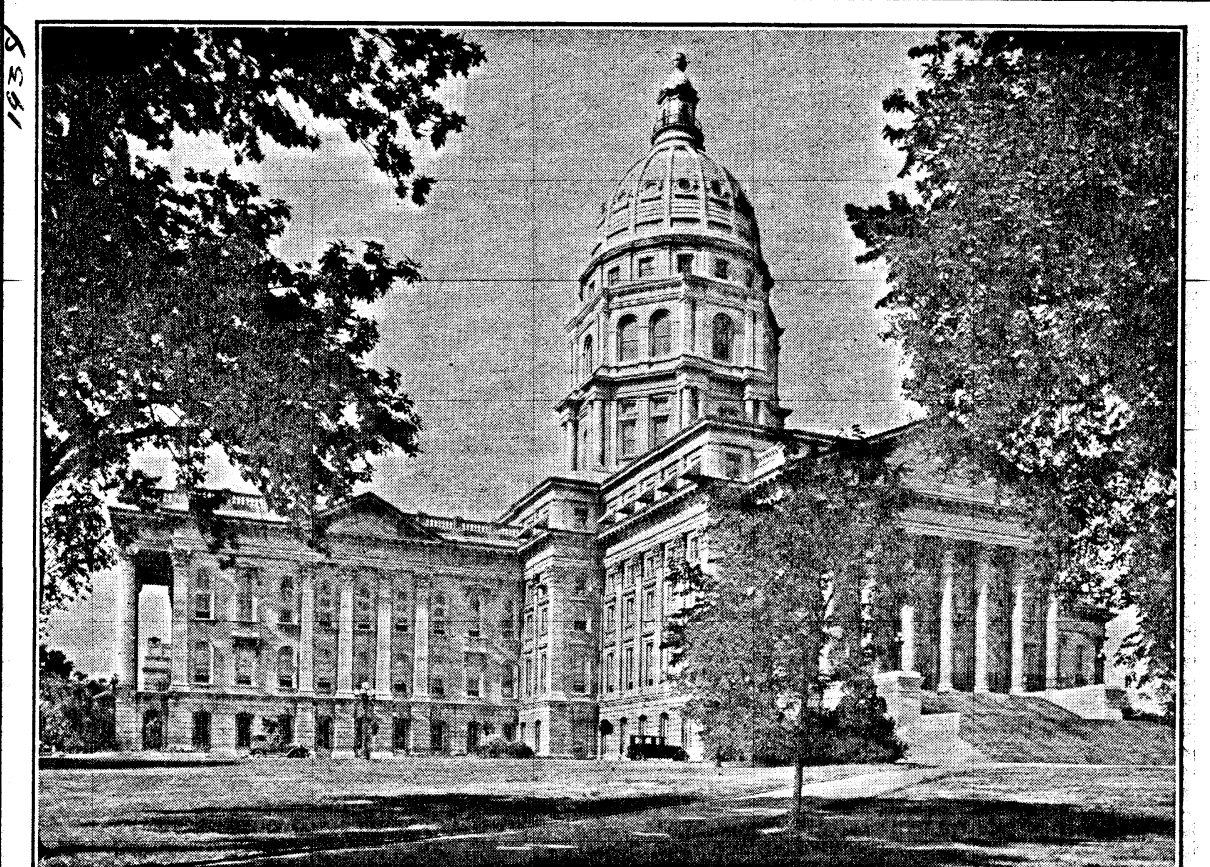
US 75, OSAGE COUNTY



WHITING CITY LAKE



US 36, MARSHALL COUNTY



Kansas State Capitol Building at Topeka—Showing North and East Wings

This is your copy of the  
Kansas Highway Map  
(July, 1938)

FROM  
KANSAS STATE HIGHWAY COMMISSION  
TOPEKA, KANSAS

To \_\_\_\_\_

17-4842-2 7-38-10M

WALTER A. HUEMAN  
Governor  
EVAN GRIFFITH  
Director of Highways  
JOSEPH J. FOJNER  
Secretary to the Commission

STATE HIGHWAY COMMISSION  
CHARLES E. MILLER CHAS. WELLS  
GUS BENGTSON B. H. SALTERS  
JERRY E. DRISCOLL FRANK MCCOY  
A. B. NUSS  
State Highway Engineer