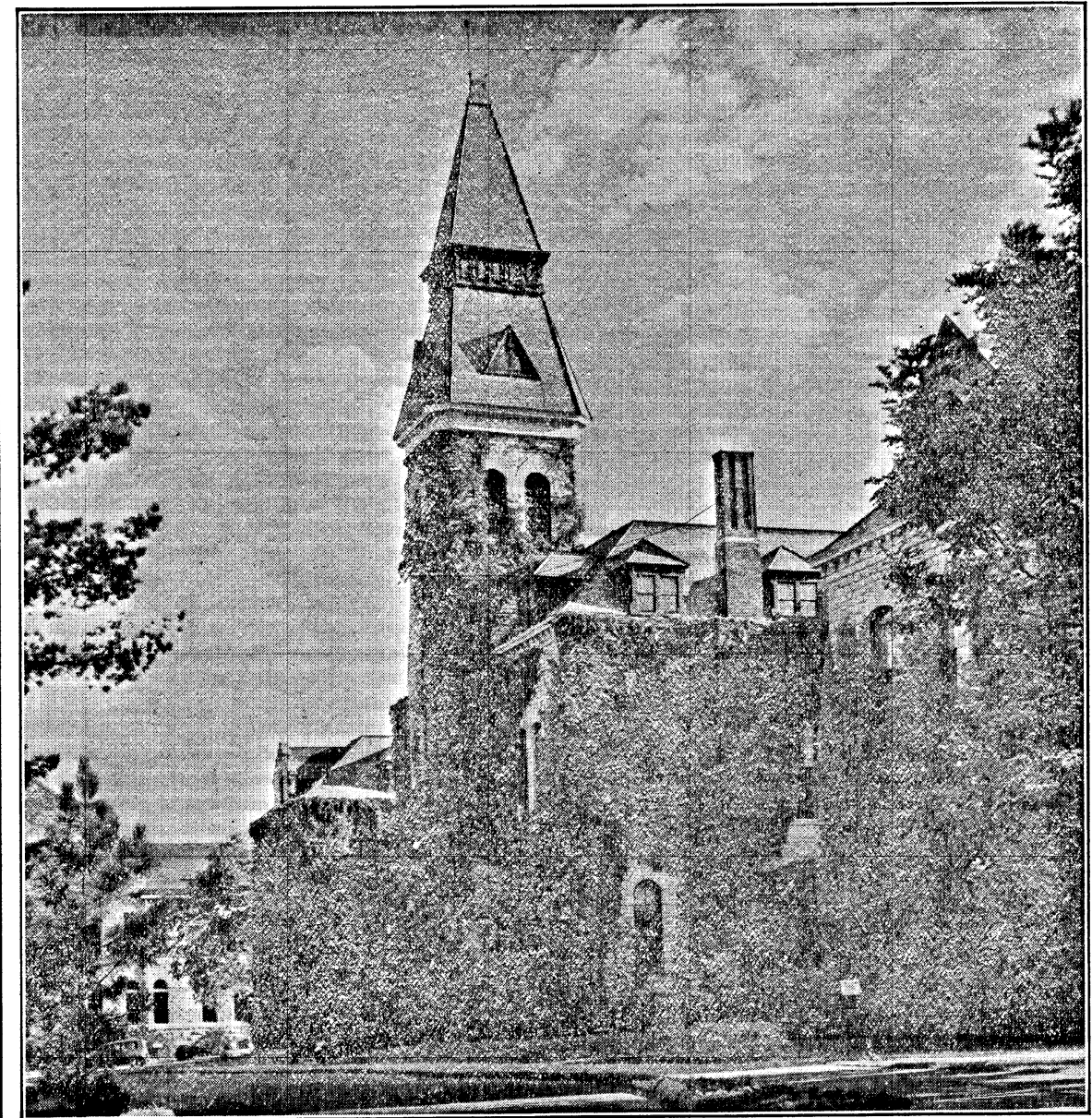
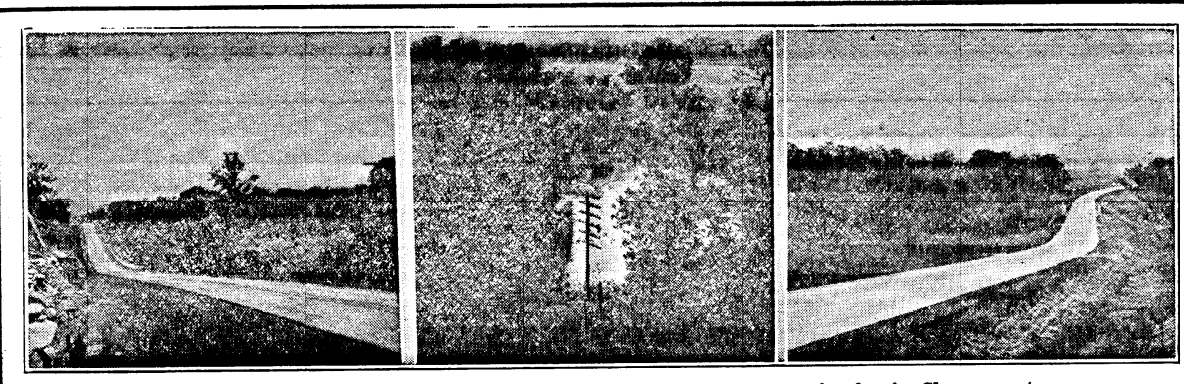


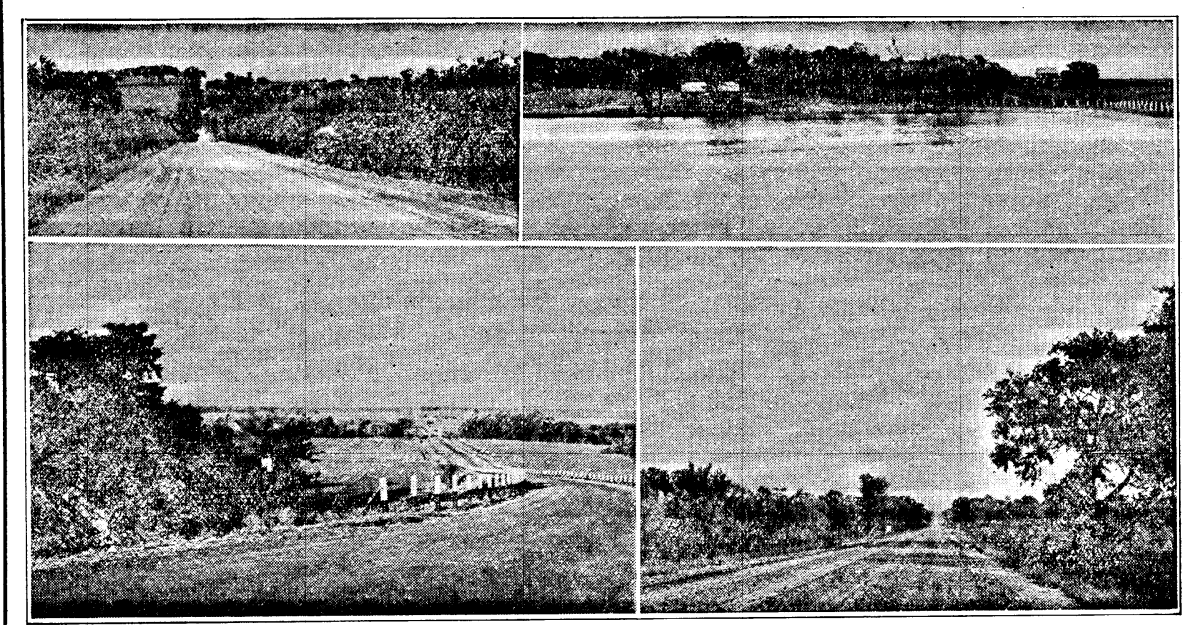
Beautiful drives and places of scenic beauty on Kansas Highways.



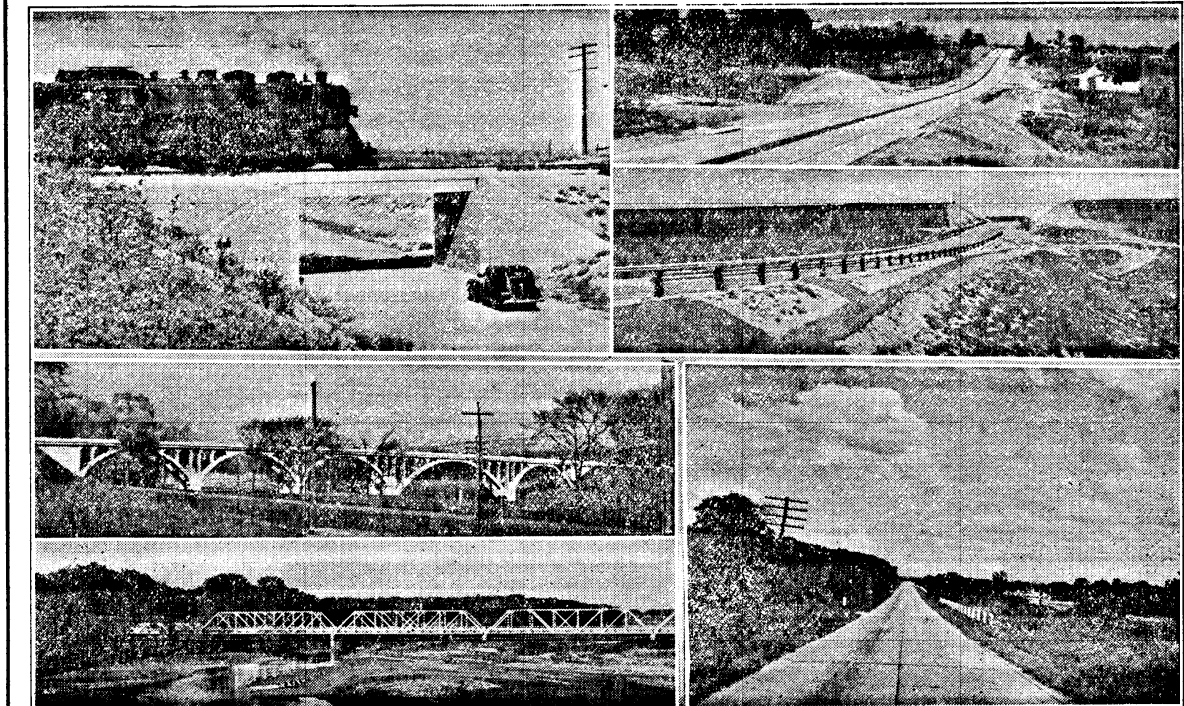
Anderson Hall, at Kansas State College, Manhattan. One of the many beautiful buildings on the college campus.



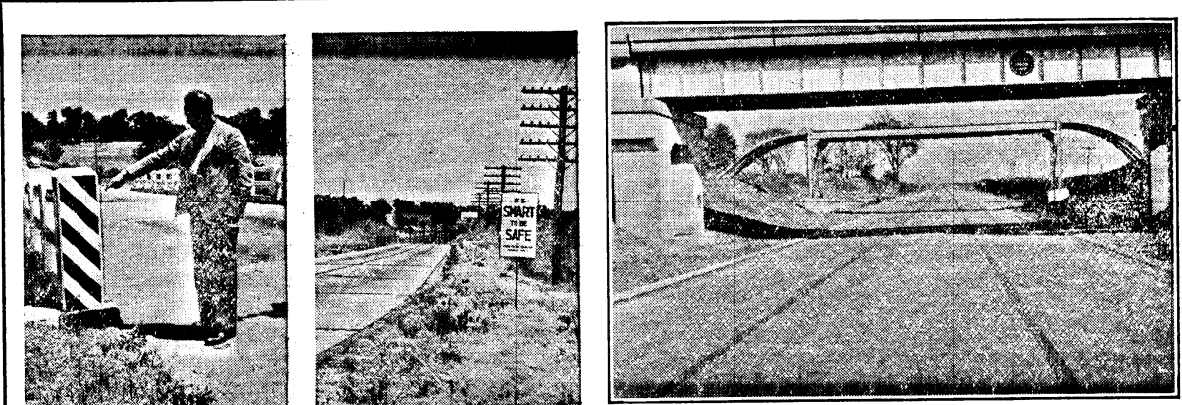
Scenes along Highways in Crawford and Chase counties. River scene is also in Chase county.



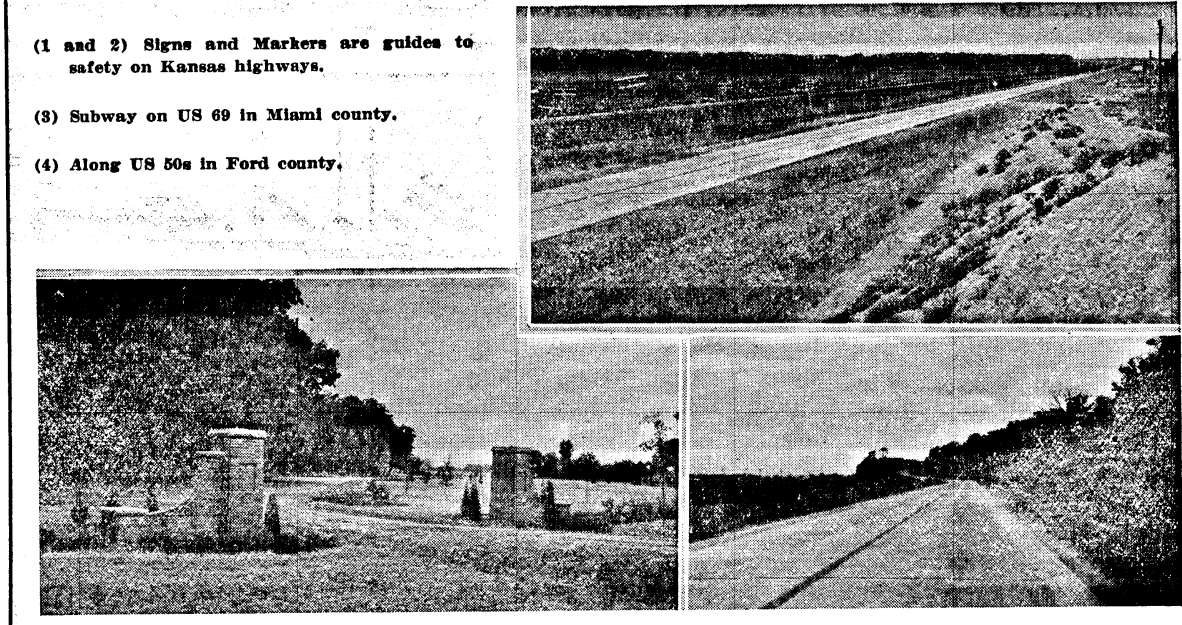
(1) Typical Kansas Secondary road. (2) Whiting Lake in Jackson county. (3) White posts and bridge on K-10 Shawnee county. (4) Wabanssee county Sand-Gravel road. (5) Slab on US 40, showing center marking for safety.



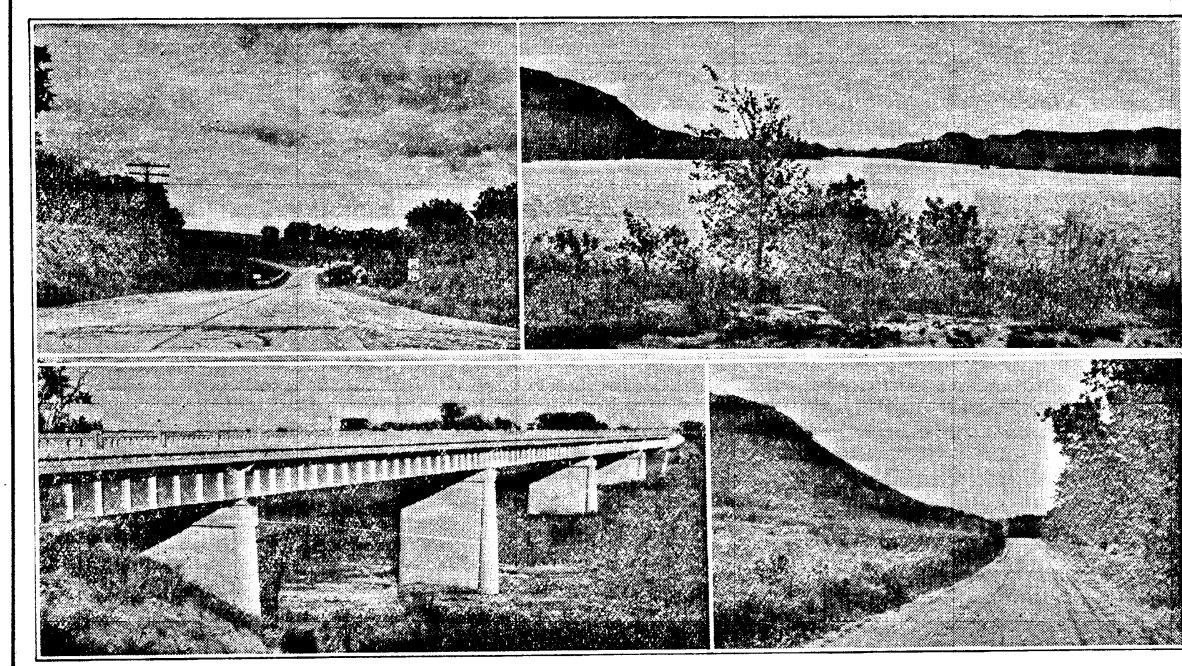
(1) Subway on US 75 Oage county. (2) Multiple-Lane road in Wyandotte county. (3) View on US 36 in Rawlins county. (4) Viaduct on US 109 Miami county. (5) Republican river bridge on US 81, Cloud county. (6) US 24 Shawnee county.



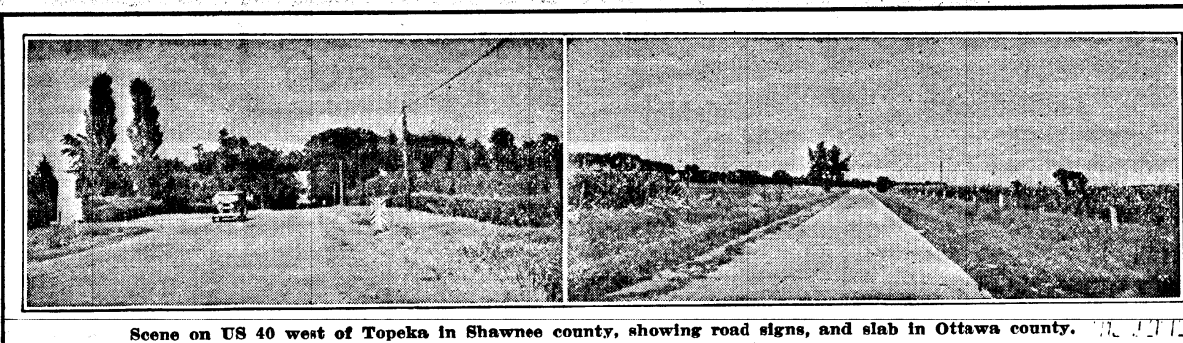
(1 and 2) Signs and Markers are guides to safety on Kansas highways. (3) Subway on US 69 in Miami county. (4) Along US 60s in Ford county.



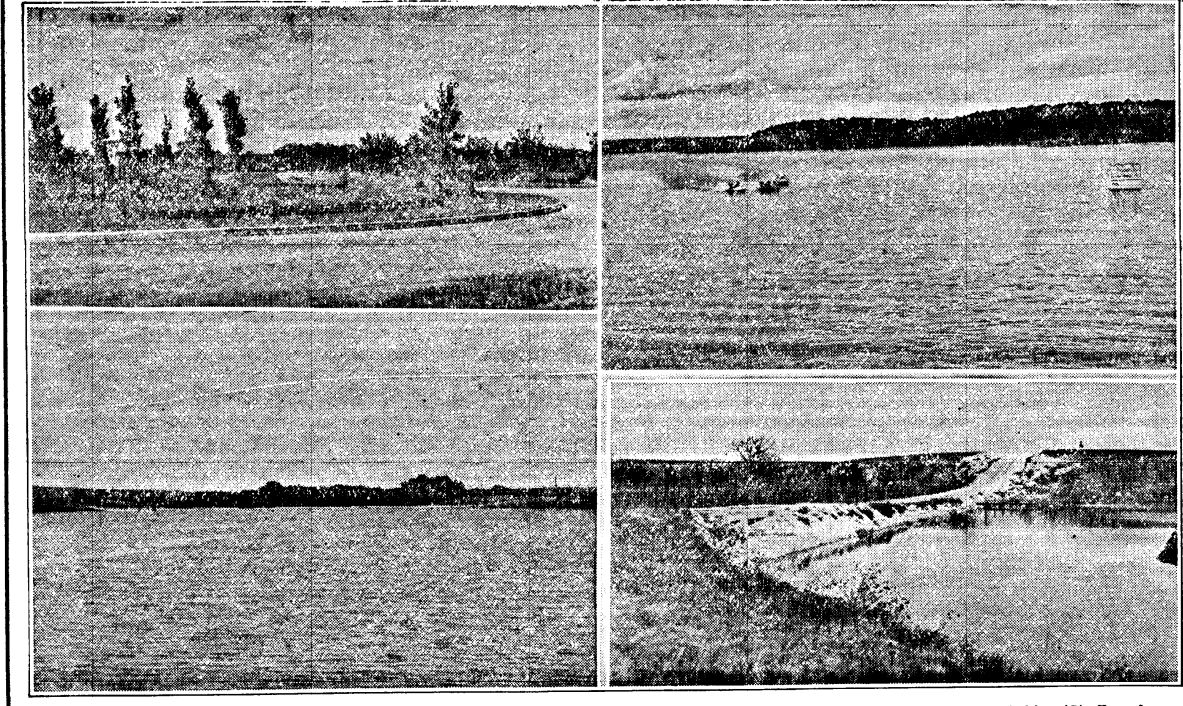
(1) Roadside park on US 81 in Saline county. (2) Slab on US 40, showing center marking for safety.



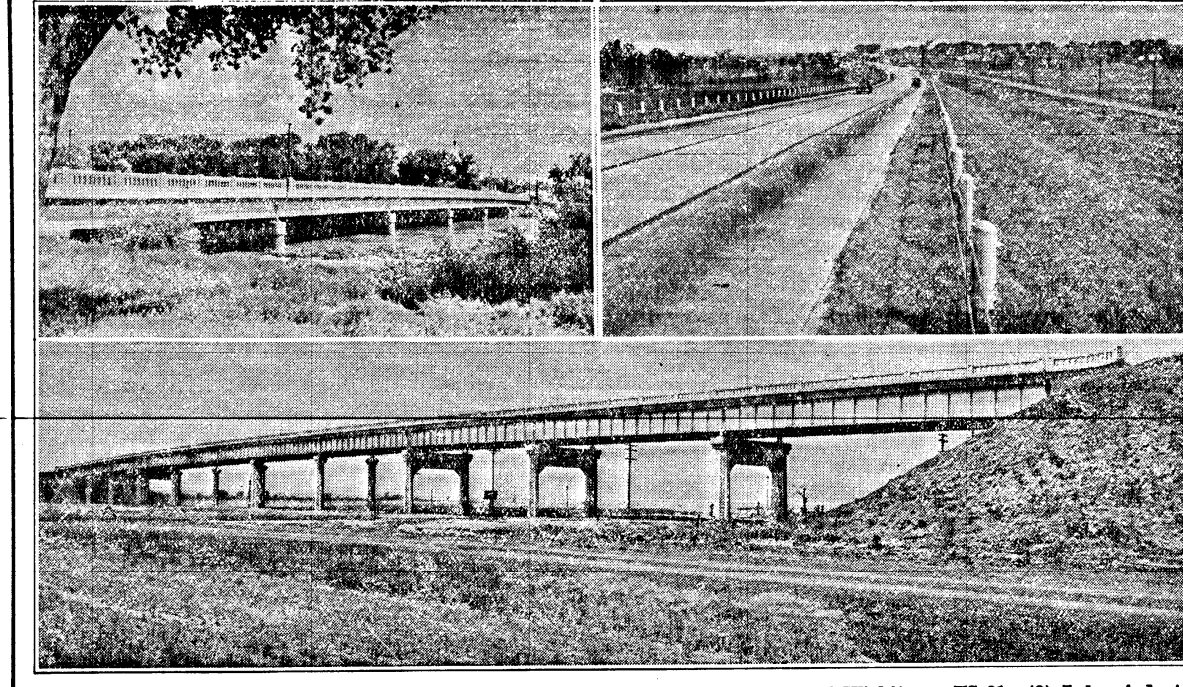
(1) View on US 40 in Pottawatomie county. (2) State lake in Scott county, US 83. (3) Bridge on US 24 in Osborne county. (4) Elkhorn road in Ellsworth county.



Scene on US 40 west of Topeka in Shawnee county, showing road signs, and slab in Ottawa county.

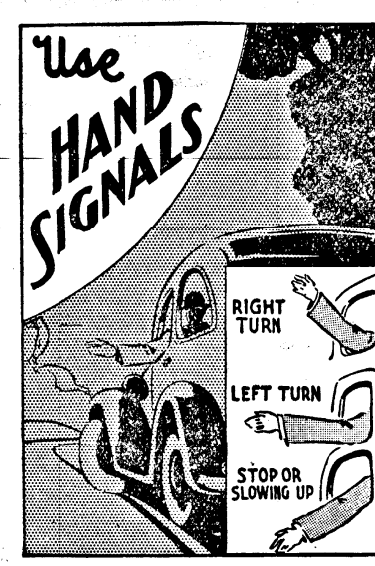


(1) Beautiful park on Tomahawk road in Johnson county. (2) Deer Creek Lake, Chautauqua county, on K-11. (3) Jemutag Lake on US 83 Decatur county. (4) Road hill which forms dam and lake in Ellis county.



(1) Arkansas river bridge on US 288 at Dodge City. (2) Multiple-Lane slab north of Wichita on US 81. (3) Lebo viaduct in Coffey county, carries US 50s over Santa Fe tracks.

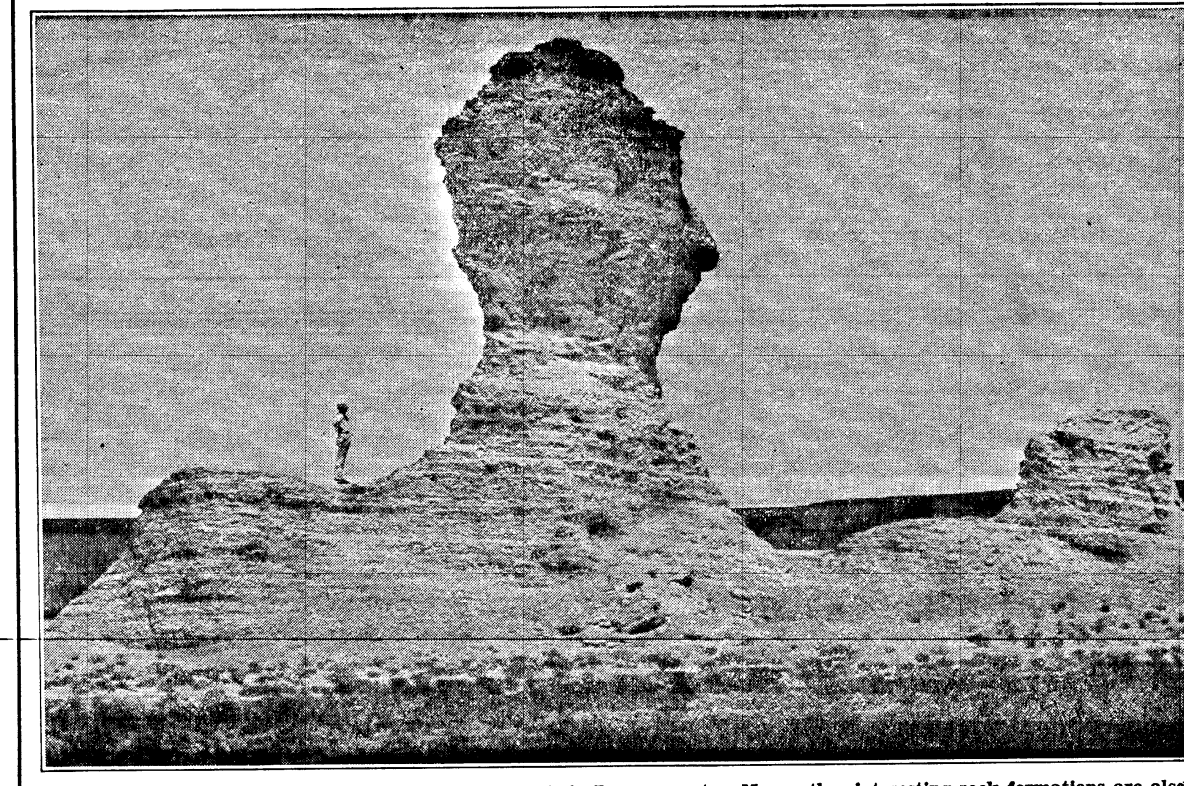
## IT'S SMART TO BE SAFE



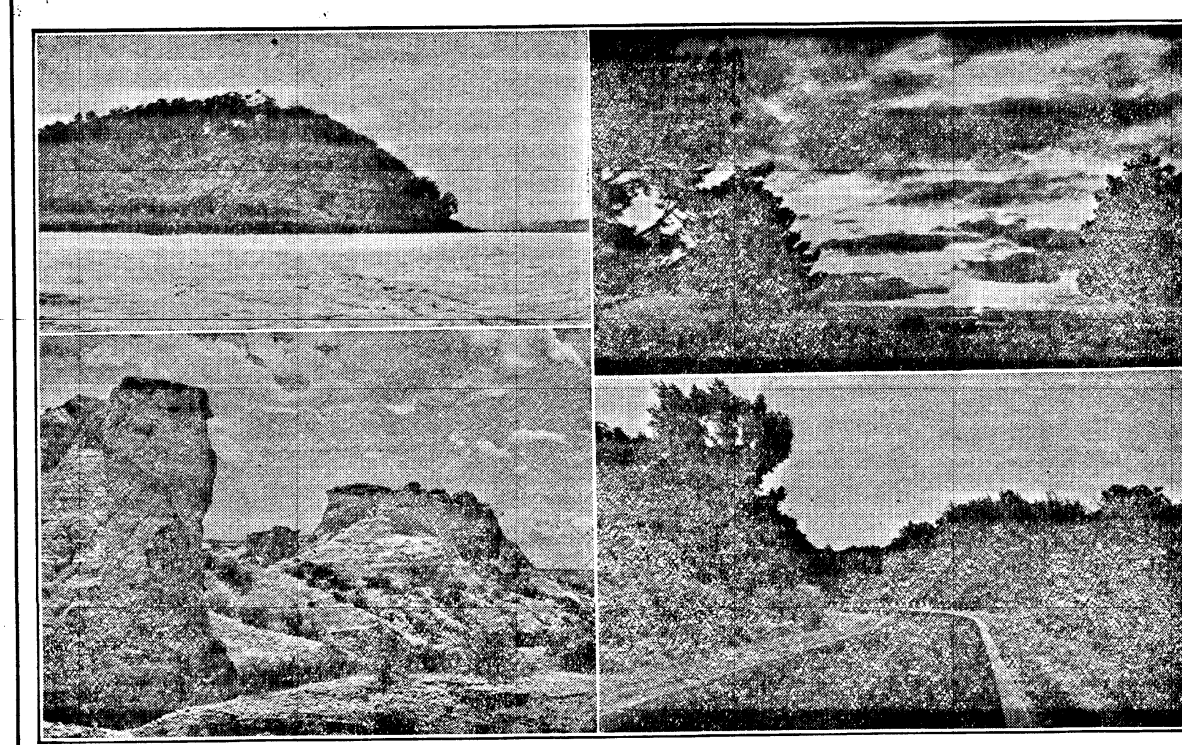
KANSAS welcomes you to her many miles of highway. We are confident you will enjoy motoring here, that Kansas people will be glad to meet you, and that you will be treated courteously.

- We ask your cooperation in observing the following traffic rules:
- Drive to the right; pass to the left.
  - Never pass on a hill or a curve.
  - Obey all traffic signals and road signs.
  - Look carefully for trains before crossing railroad tracks.
  - Be considerate of pedestrians.
  - Dim or depress your headlights.
  - Be certain your brakes are adequate.
  - Drive at a reasonable rate of speed; one at which the car is under control in any emergency.
  - Use standard arm signals.
  - Be polite to the other driver.

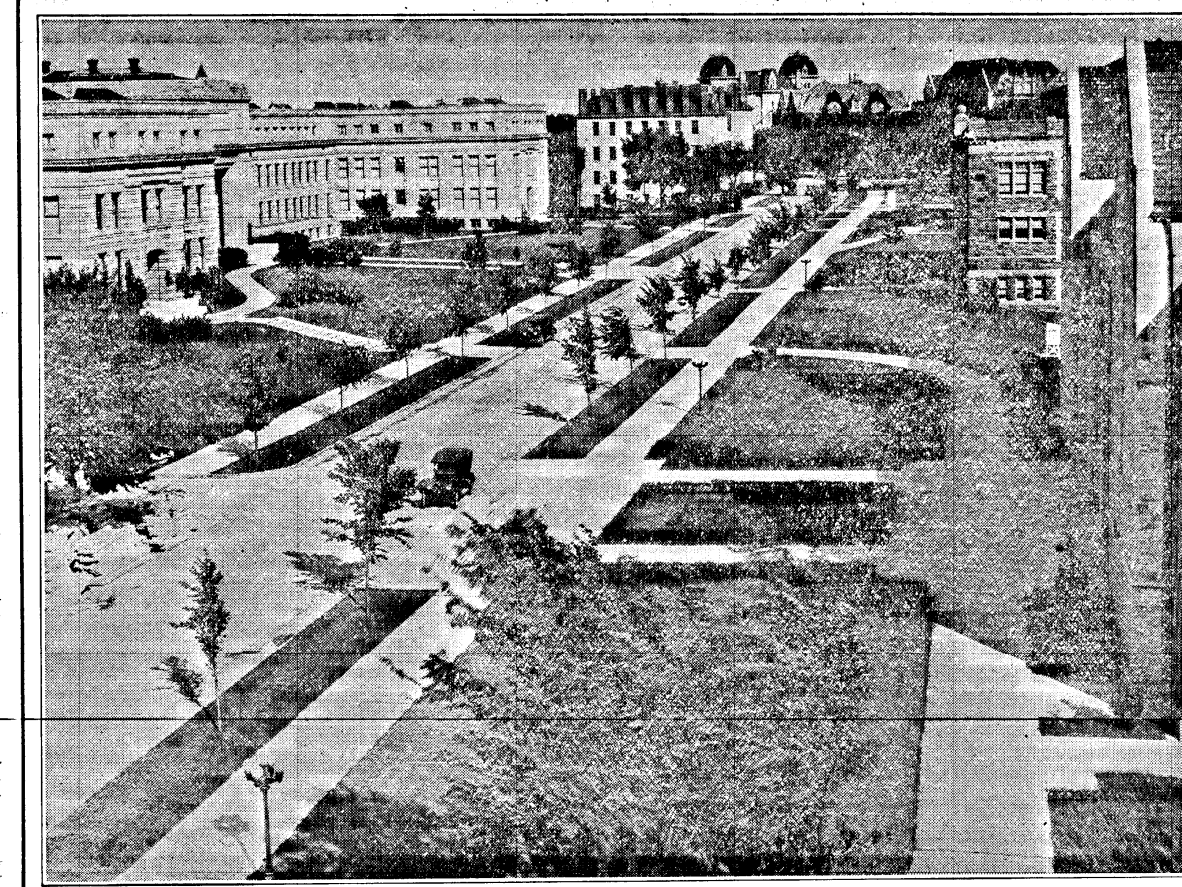
Thank You!



The Sphinx—Most unusual rock formation in Kansas is in Logan county. Many other interesting rock formations are also found in the Mountains Rock group in this area. Kansas has a tribe of Indians on a reservation north of Topeka in Jackson county; a herd of buffalo on a reserve near Dodge City in Ford county; a Garden of the Gods in Ellsworth county near Carlsbad; the Wagon Wheel in Brown county, on highway 36, and the Rock City of eroded pyramids and balanced rocks near Minneapolis in Ottawa county, off US 81. These and many other features are to be found in Kansas, all most interesting and beautiful.



(1) Lake in Scott county. (2) A scene along highway K-15 in Clay county. (3) A typical rock formation in Smoky Bluffs, Logan county. (4) K-10 in Johnson county.



Kansas University—Building and Grounds showing beautiful walks, trees and general surroundings from a central view of the campus. The picture shows the Administration building at the left foreground and extending back, the Chemistry building with many chimneys, Fraser Hall with two towers, and the front of the Auditorium in the immediate right foreground.

# KANSAS

**DO YOU KNOW?**

KANSAS makes every effort to provide safe and dependable all-year highways for the tourist. For the convenience of the traveling public it has the second largest system in the country, having 132,192 miles of maintained roads.

KANSAS is the geographical center of the nation, the exact center being in Smith county, and the geodesic capital of North America, its center being located in Osborne county, Kansas, larger than England and Wales, has an area of approximately 80,000 and is almost a perfect rectangle, being 200 miles from north to south and 400 miles from east to west.

The natural grandeur of scenic KANSAS, picturesque to the beauty-seeking eye, is magnetic with its Garden of the Gods; its Sun Spring of flowing mineral water; its Rock City, of eroded pyramids and balanced stones, found in hills, valleys, fertile fields, pasture lands, rolling prairies and wide-open plains which stretch westward to the foothills of the Rockies.

Four score years before the Pilgrims landed at Plymouth Rock, seekers for the rumored fabulous Seven Cities of Cibola carved their way into Kansas territory from the lower Mississippi, and from that day to the present time Kansas has worked for a commonwealth of peace and security. This is shown through a study of the possessions and potentialities of the state.

KANSAS is first in the production of wheat, growing over one-half of all the hard winter wheat in the United States.

It ranks first among the states in the number of eggs shipped to the large markets, shipping more than a billion and a half eggs to large markets a year.

The flour milling industry in Kansas is the largest in the country, averaging 13 million barrels of flour a year.

KANSAS livestock and not wheat is the chief source of farm income, the state having the second largest livestock market in the United States.

KANSAS has the largest broom corn market in the country, which centers in a half dozen southwestern counties.

KANSAS averages more than a million acres in legumes each year.

KANSAS fattens more than 300,000 foreign southwestern cattle on its beautiful Bluestem pastures each year.

Eighty per cent of KANSAS farms produce surplus milk or cream which result in the second largest creamery and the second largest cheese factory in the United States, although, lard is one of the biggest revenue producers among farm products.

The mineral output in KANSAS is larger in value than all of the gold produced in the United States, including Alaska.

**DO YOU KNOW?**

KANSAS produces 90 percent of all apple seedlings grown in the United States and is specially noted for the flavor and quality of its Jonathan apples which are grown without irrigation.

KANSAS is the first in native born citizens.

KANSAS is credited with more wealth per capita than is New York.

KANSAS is first in number of college students per 1,000 people.

The first permanent settlement in Kansas was made in 1827 at Fort Leavenworth.

The French named KANSAS for the Kansas Indian. At Fort Riley, is located the largest cavalry school in the world.

KANSAS' land surface slopes from 750 feet at the Missouri river to 4,000 feet above sea level at the Colorado line.

KANSAS has a herd of buffalo on a reservation near Dodge City on highway 508.

KANSAS has extensive beds of rock salt, 300 feet thick and extending beneath several counties. This supply is sufficient for the world's demand for the next 250,000 years at the present rate of consumption.

KANSAS ranks fourth in the production of crude oil, producing 58,400,000 barrels in 1936. According to government reports the entire western half of the state is potential oil territory.

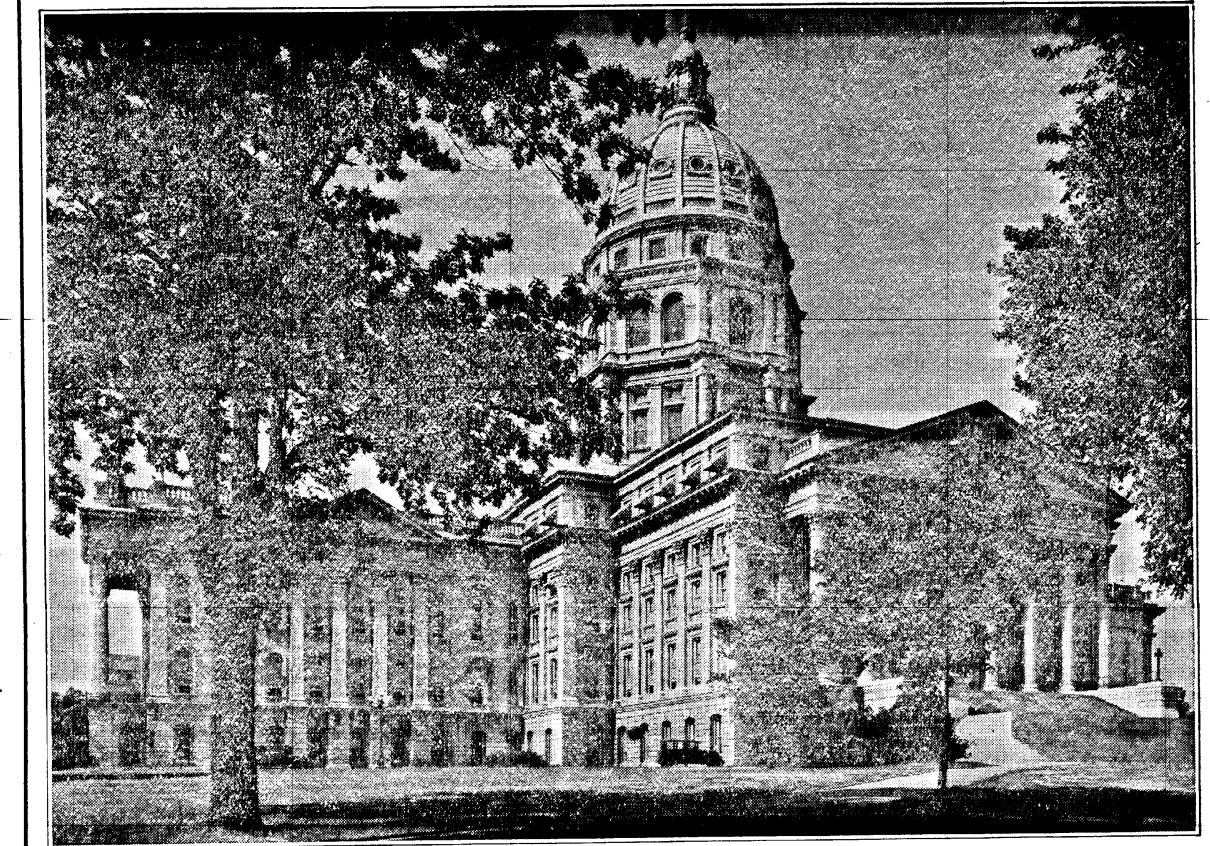
Southeast KANSAS has a greater variety of natural resources than any other section of the United States.

KANSAS is also rich in gas, coal, lime, cement, building stone, lead, zinc and clays for brick, tile, pottery and moulding.

KANSAS supplies more volcanic ash than any other state, used for abrasives, scouring soaps, tooth powder, etc., yet never had a volcano.

If you want to live, live in Kansas. Kansas people live longer than any other people in the country. People of the age of 75 and older constitutes 2.2 percent of the state's population.

The history of KANSAS is 66 years older than any of the original 13 colonies, beginning almost 400 years ago with the arrival of Coronado. Many historians treat the Coronado exploration as a detached incident of the history of the state, but, other Spaniards continued to come to Kansas and were still coming when Pike entered in 1806 as the first American explorer to march across the state from east to west. So, it is a far cry from the trails of the Indian and the explorer to the modern multiple-lane hard surfaced highways of today which take the traveler by the beautiful scenery of expansive farms and ranches, timbered hills, rivers, lakes, and surface formations of the most interesting type.



Kansas State Capitol Building at Topeka—Showing North and East Wings

This is your copy of the  
Kansas Highway Map  
(Corrected to February, 1937)

FROM  
KANSAS STATE HIGHWAY COMMISSION  
TOPEKA, KANSAS

To \_\_\_\_\_

16-7718-a 5-87-3M

<p>WALTER A. HUXMAN Governor</p> <p>EVAN GRIFFITH Director of Highways</p> <p>JOSEPH J. POJNER Secretary to the Commission</p> <p>February, 1937</p>	<p>STATE HIGHWAY COMMISSION</p> <p>CHESTER W. DAVIS GUS BENGTSON H. J. MORRISON</p> <p>CHAS. WELLS LEIGH ABBEY FRANK MCCOY</p> <p>A. B. NUSS State Highway Engineer</p>
--	---