

KANSAS INVITES YOU

SOME 80 years before the Pilgrims landed at Plymouth Rock, Coronado and his Conquistadors traversed Kansas in search of the fabulous Seven Cities of Cibola. In the intervening four centuries Kansas has been the scene of stirring events. For many years the hunting grounds of peaceful and savage Indians alike, Kansas was explored by Spanish and French adventurers. Later, when eastern Indian tribes were moved to Kansas, missionaries, trappers, and traders came also.

Then, when the cry of "gold" resounded across the nation, hordes of men on foot, on horses, and in prairie schooners trekked westward through Kansas along the Oregon and Santa Fe trails, and others leading toward the setting sun. Starting at the eastern state border, the Pony Express galloped to the new country in the west. A more stable population settled along these roads, tilled the soil and built their homes.

Although only one major battle of the Civil War was fought in Kansas, many of the events leading to the strife transpired within its borders. The struggle between Free-state men and Slavery forces, prior to the admission of Kansas to the Union on January 29, 1861, was so bitter that the state became known as "Bleeding Kansas."

Following the war, cowboys from the Southwest drove great herds of cattle to Abilene, Newton, Wichita, Ellsworth, and Dodge City. Inexpensive land and land-grants to Union soldiers started an influx of settlers. A prairie commonwealth sprang up.

Progressing steadily to an important place in the nation, Kansas has shed her pioneer cloak for the apparel of achievement.

The Kansas of today is networked with modern highways, more than 8,000 miles being all-weather roads. Every town and community can be reached by a good road, and tourists travelling across the state will find highways leading directly to the points they wish to reach.

Kansas offers an abundance of scenic vistas of unsurpassed beauty. It is far from the flat and featureless land it is generally presumed to be by those unfamiliar with its picturesque and varied landscape.

Kansas is both the geographic center of the nation (Smith county) and the geodetic capital of the North American continent (Osborne county).

Kansas is fourth in agriculture with a well-balanced output, 47.1 percent of the farm income coming from crops and 52.9 percent from livestock products.

It is the largest producer of hard winter wheat in the world; the largest wheat producing state in the Union. Normally, one-fifth of all the hard winter wheat grown in the United States is produced in Kansas and 90 states

have a smaller total acreage in all kinds of crops than Kansas has in wheat alone.

Kansas is first among the states in flour milling production; second in meat packing.

Kansas ranks eighth among the states in mineral output, producing eight times as much mineral wealth annually as Alaska and surpassing such well-known mining states as Colorado, Montana, Utah, and Arizona.

It is first in the production of volcanic ash although the state never had a volcano; second in zinc; fourth in oil; ninth in natural gas; and tenth in cement.

There is enough salt underlying Kansas to last the United States for the next 250,000 years at the present rate of consumption and it is third among the states in salt production.

Southeast Kansas contains a greater variety of mineral resources than any other equal area in the nation, being favored by eight—coal, clay, shale, limestone, gas, zinc, lead and oil—and in this region there is the largest concentration of excavating machinery in the world.

Kansas ranks first in number of eggs shipped to the large markets; it plants more corn than 42 other states and grows corn in all its 105 counties.

It holds almost a complete monopoly on the growing of apple seedlings, producing more than 90 percent of the nation's entire output. It is first in the production of alfalfa seed; third in production of flax seed; second in grain sorghums; fourth in yield per acre of sweet potatoes.

Kansas has the largest wheat storage capacity in the nation. It has more land in farms than any other state except Texas—which is three times as large.

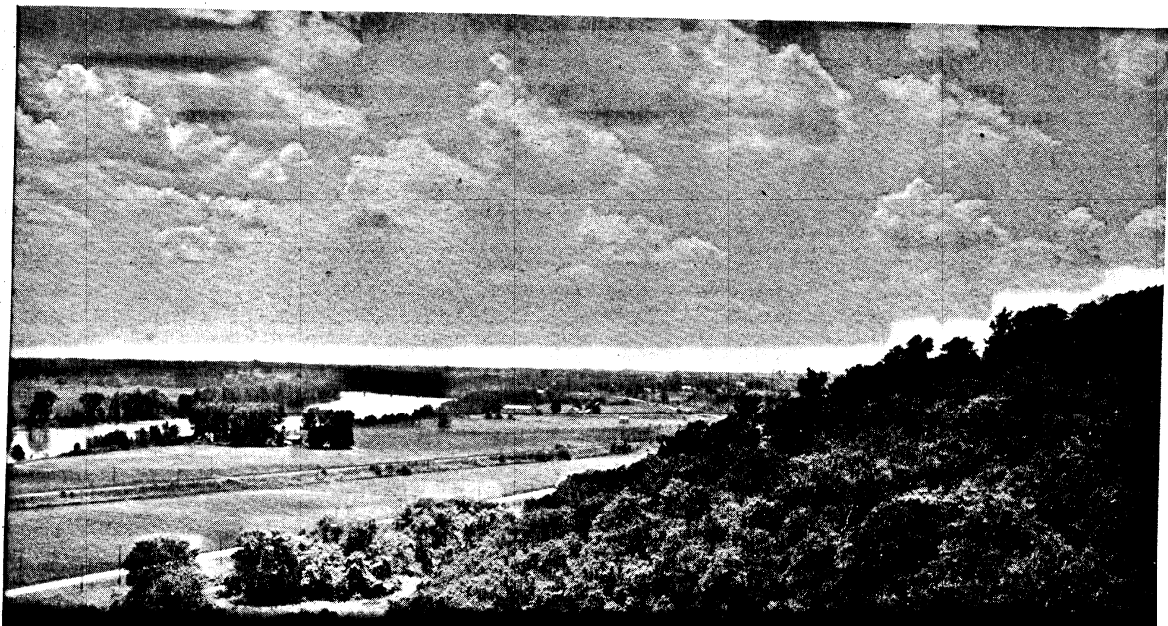
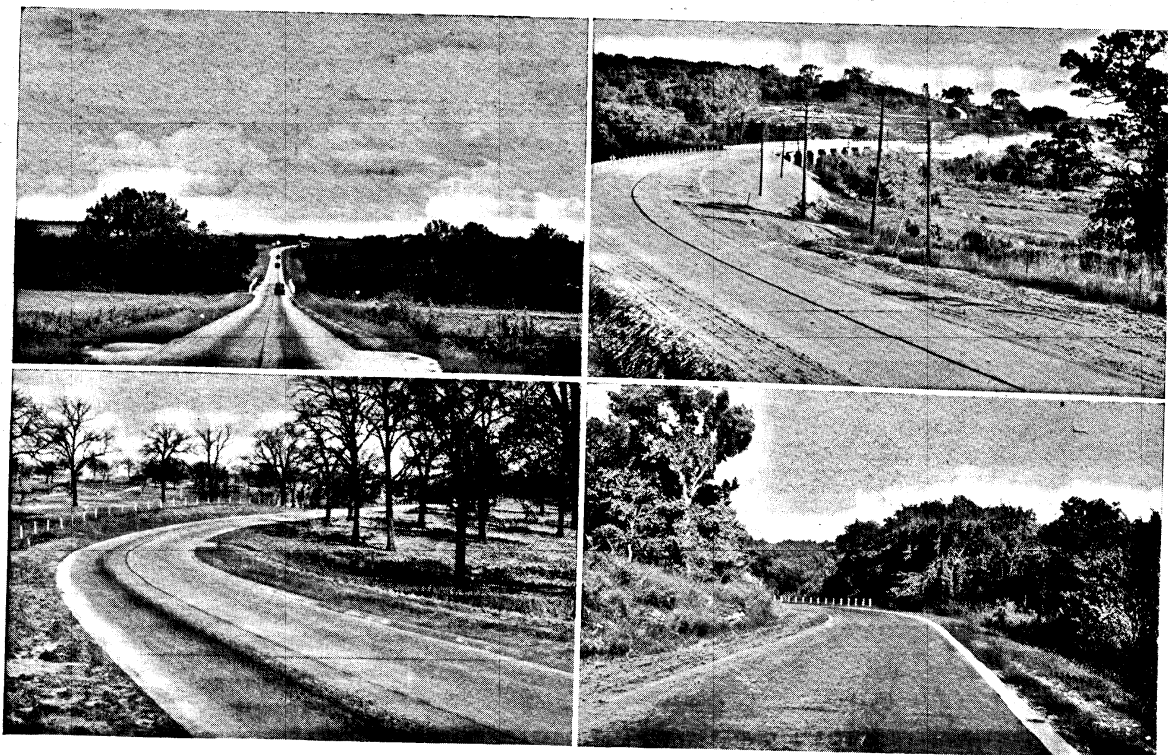
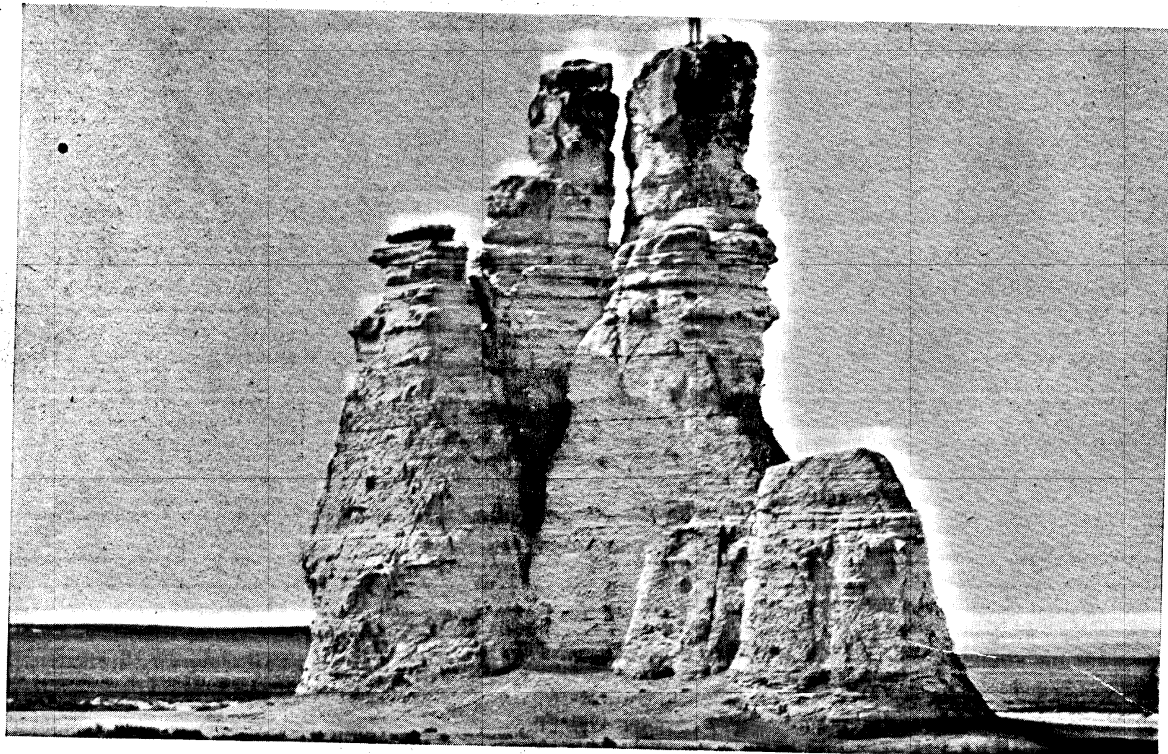
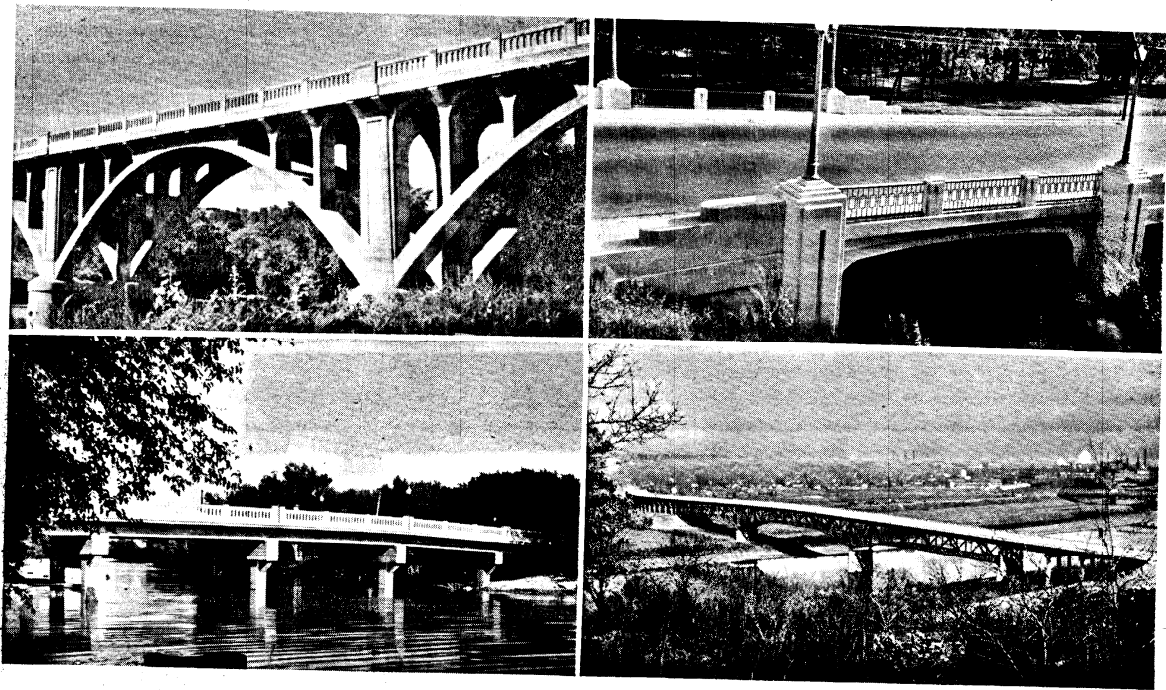
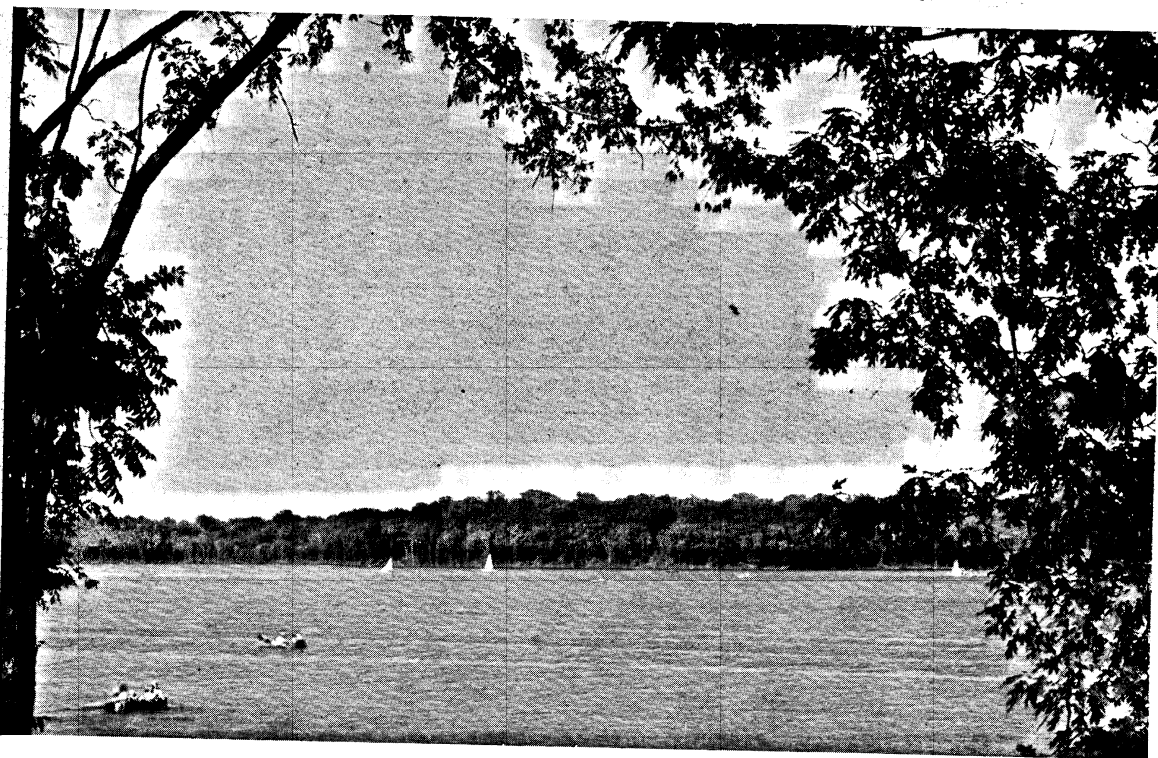
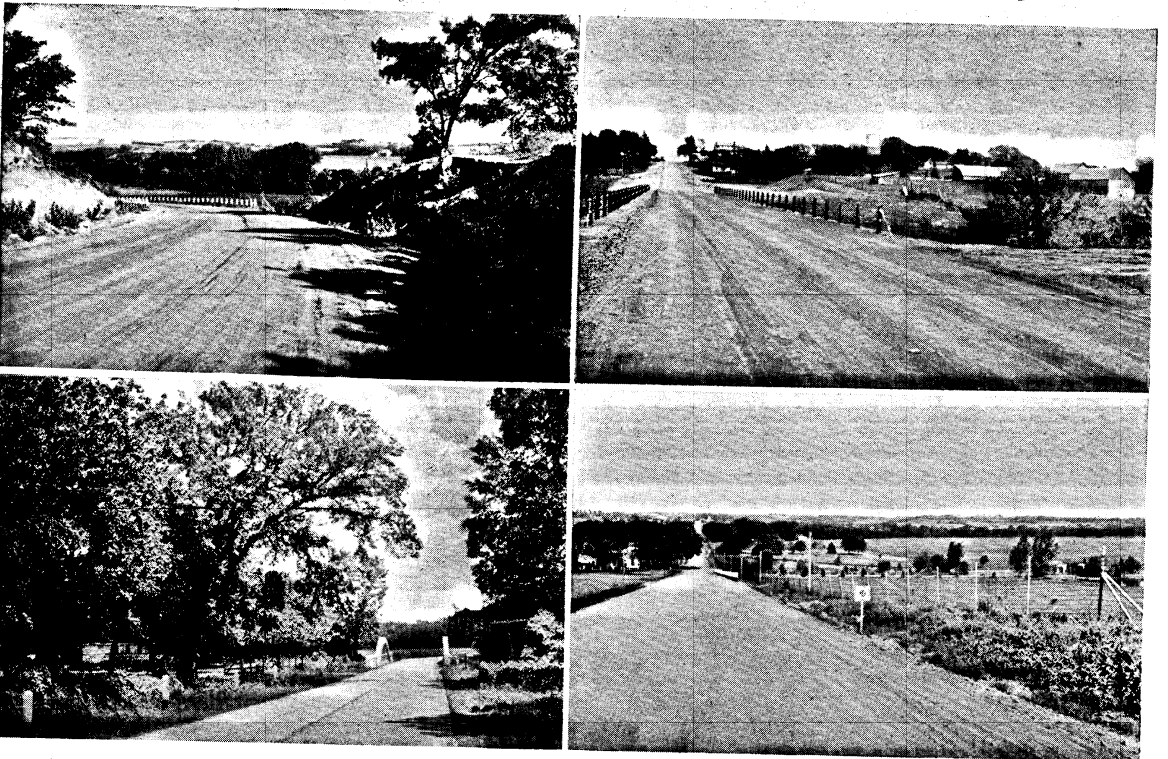
It is first among the states in the amount of farm acreage operated by owners and leads all states in having the smallest per capita mortgage foreclosures.

It ranks third in the production of beef cattle for slaughter; has more pure-bred Shorthorns than 42 other states; more pure-bred Poland Chinas than 35 others; more Holsteins than any state west of the Mississippi; and is fifth in the nation in Ayrshires.

Ninety-three percent of the population is native-born and only 12 percent illiterate. It has the highest percentage of college students per thousand of population and the largest percentage—70 percent—of any state of its farm boys enrolled in high schools.

Kansas launched the first state-wide park and public fishing ground movement in the United States and now has more than 30 state parks and lakes.

People are happy in Kansas because the economic structure of the state rests not upon one resource alone. Its agriculture is varied; its mineral wealth inestimable; its industries thriving.



BELIEVE IN SIGNS

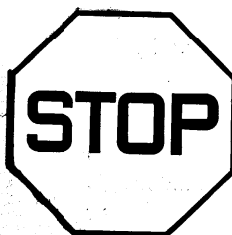
They are Placed on Kansas Highways for You



All round signs mean Railroad Crossings



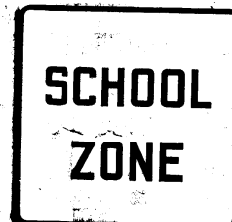
All diamond signs mean Slow



All octagonal signs mean Stop



U. S. Highway Marker



All square signs mean Caution



State Highway Marker

IDENTIFICATION FOR CARELESS DRIVERS

If you do not heed warning signs and signals
If you pass cars on hills or curves
If your brakes and tires are poor
If you mix gasoline with alcohol

Fill out the blank below

Name _____ Address _____

In case of injury or death notify _____

Descriptions of pictures read from left to right, starting at the upper left-hand corner.

ROCK CITY, southwest of Minneapolis, Ottawa County, is near US 81. Erosion caused this unusual sandstone formation. TYPICAL HIGHWAY BRIDGES as built by the Kansas State Highway Department. Those shown are at Hays, Topeka, Ellis, and Kansas City. ALL WEATHER ROADS lead to every part of Kansas. Typical of the smooth oil, concrete, and sand-gravel roads are those pictured.

CASTLE ROCK is a chalk spire in eastern Gove County, about 21 miles south-east of US 40 at Quinter. It rises about 70 feet above the surrounding terrain. Similar erosional forms may be found in Logan County.

One of the many beauty spots of Kansas is the LEAVENWORTH COUNTY STATE LAKE, northwest of Tonganoxie on K 16. Fishing, swimming, boating, and camping facilities are provided. Other state lakes and parks are in various parts of Kansas. HARD-SURFACED HIGHWAYS traverse Kansas and invite sure, safe travel. At the lower right is a view of the Kaw River from the bluffs along K 32 between Kansas City and Lawrence.

This is your copy of the Kansas Highway Map

FROM
KANSAS STATE HIGHWAY COMMISSION
TOPEKA, KANSAS

To _____

16-3094

PRINTED BY KANSAS STATE PRINTING PLANT
W. C. AUSTIN, STATE PRINTER, TOPEKA

H. D. Barnes
State Highway Engineer
April, 1936

STATE HIGHWAY COMMISSION
Chester W. Davis
Earl C. Tope
Lorah Abbey
E. C. Bray

Director of Highways

KANSAS STATE HIGHWAY MA

Alfred M. Lanson
Governor

Harry Dabney
Director of Highways

THE CAPITOL, TOPEKA

