



---

# WELCOME

## PLEASE SIGN IN

---

**I-135 / SE 36<sup>th</sup> Street  
Interchange Reconstruction**  
*Harvey County*



# Project Overview



## INTRODUCTION

This project is part of KDOT's Eisenhower Legacy Transportation Program, known as IKE. It is a roughly \$10 billion investment in the future of Kansas. This program and the transportation improvements it will deliver play a key role in our state's economic recovery, putting Kansans to work and improving quality of life.

## PREVIOUS PUBLIC INPUT

In January of 2011, a public meeting was held to introduce the I-135 & SE 36th Street Interchange Improvements project. Input received indicated the public was concerned about detours during construction as well as bicycle and pedestrian connections. As a result, today's reconstruction project includes a sidewalk and a phased construction schedule to reduce detours.

## NEXT STEPS

Final designs will be completed in fall of 2023. Once the project design is advanced, it would be eligible for the IKE Construction Pipeline. Because the bridge is nearing the end of its useful life, construction letting is expected early next year. KDOT Right-of-Way will contact landowners to acquire the needed temporary easements to help with construction, and utilities will be relocated in advance of construction.

**I-135 / SE 36<sup>th</sup> Street  
Interchange  
Reconstruction**  
*Harvey County*



# Project Location



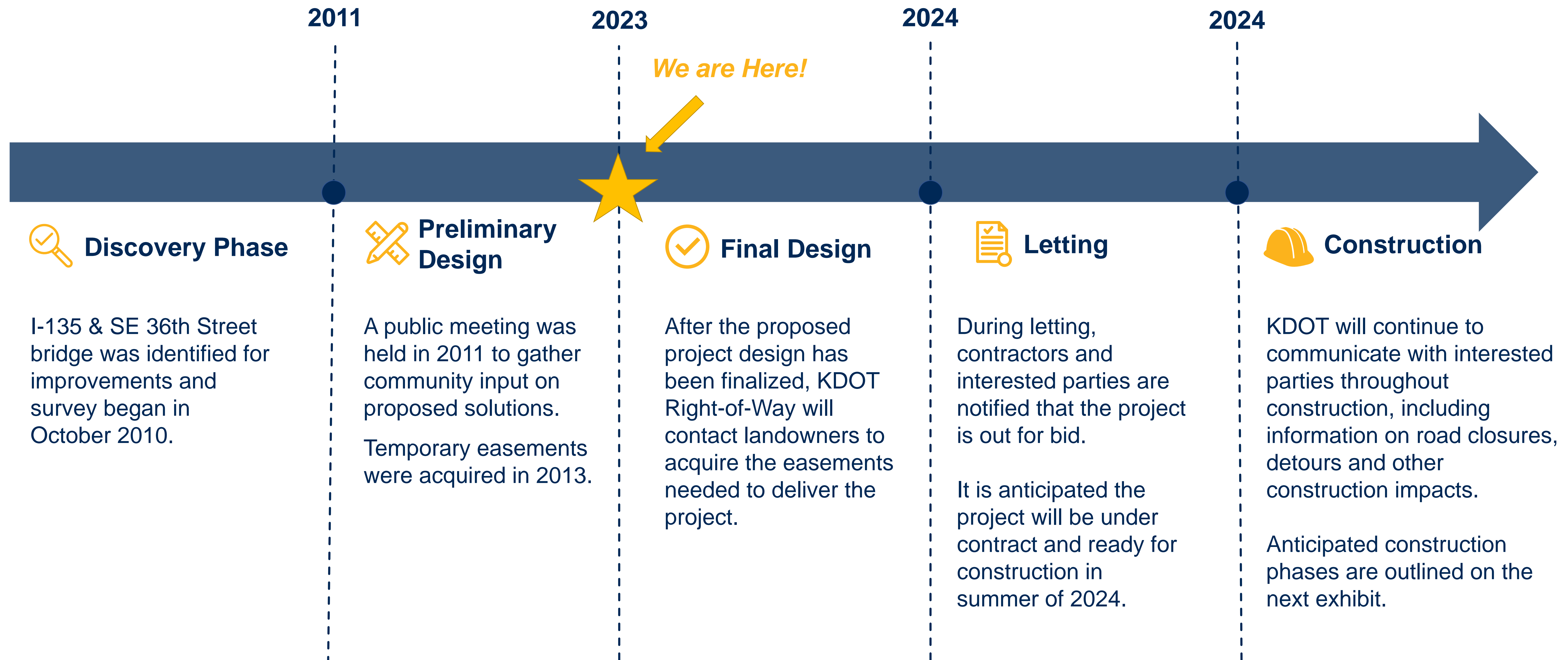
*The I-135 / SE 36<sup>th</sup> Street Interchange is located within the city limits of Newton.*



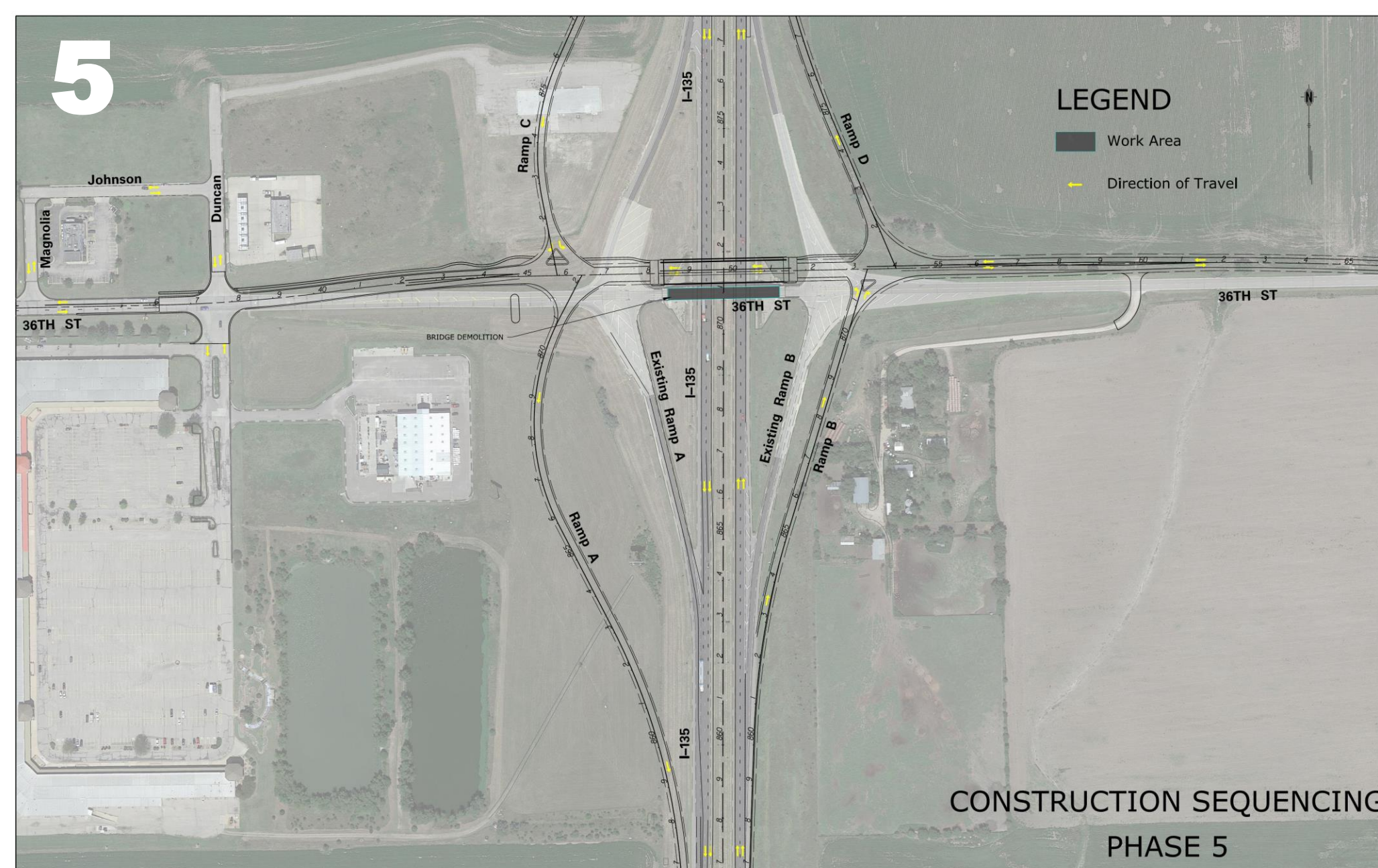
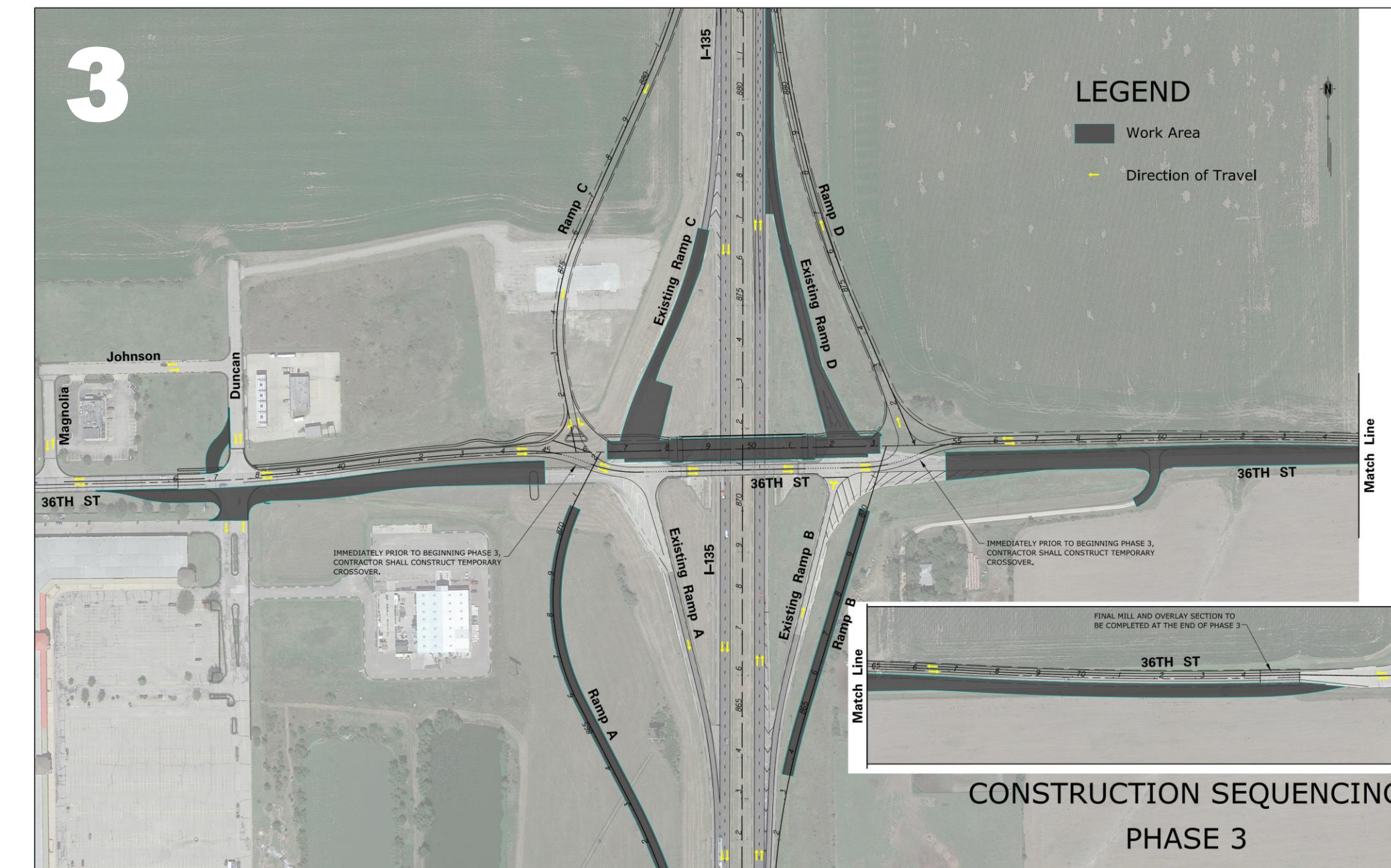
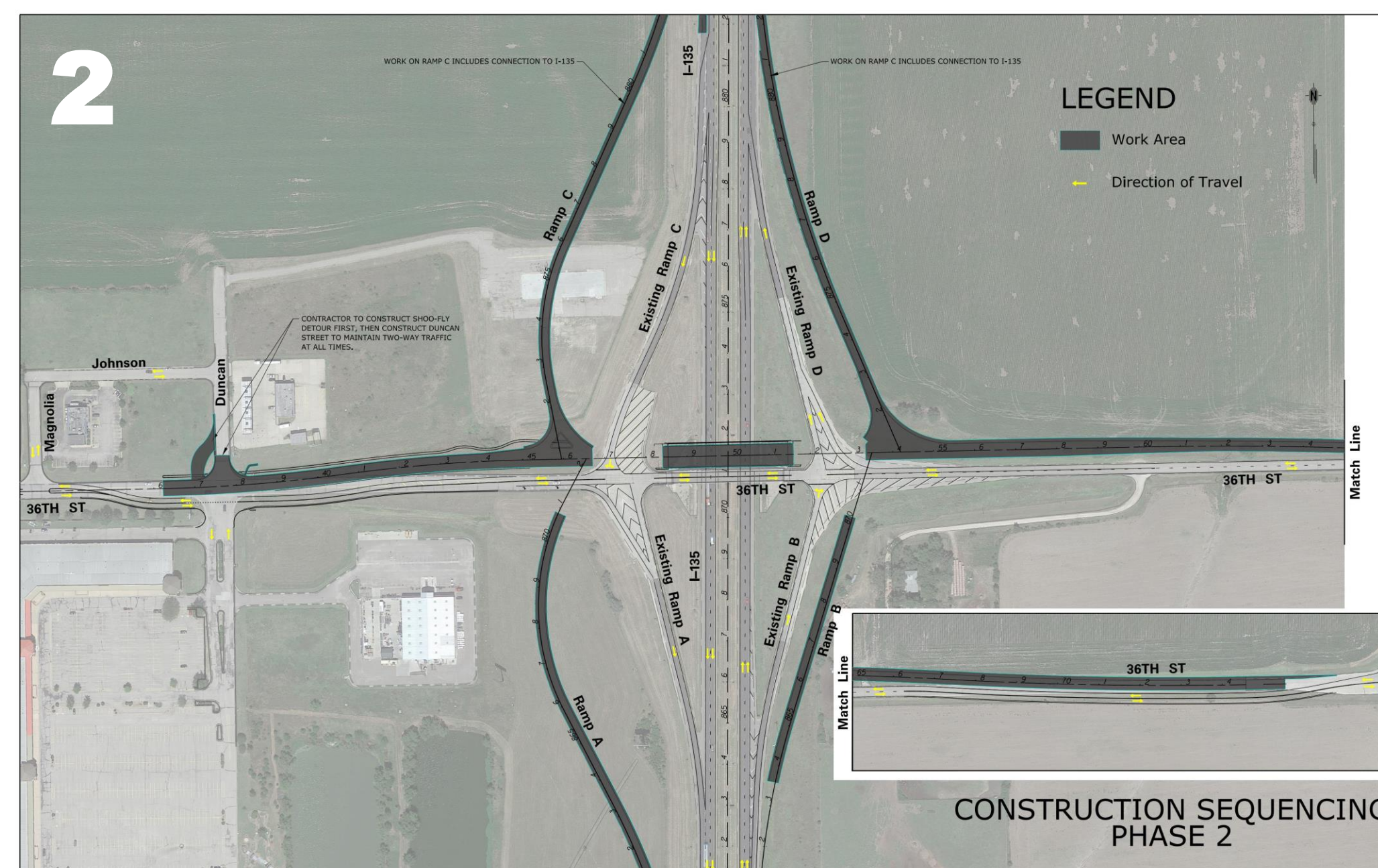
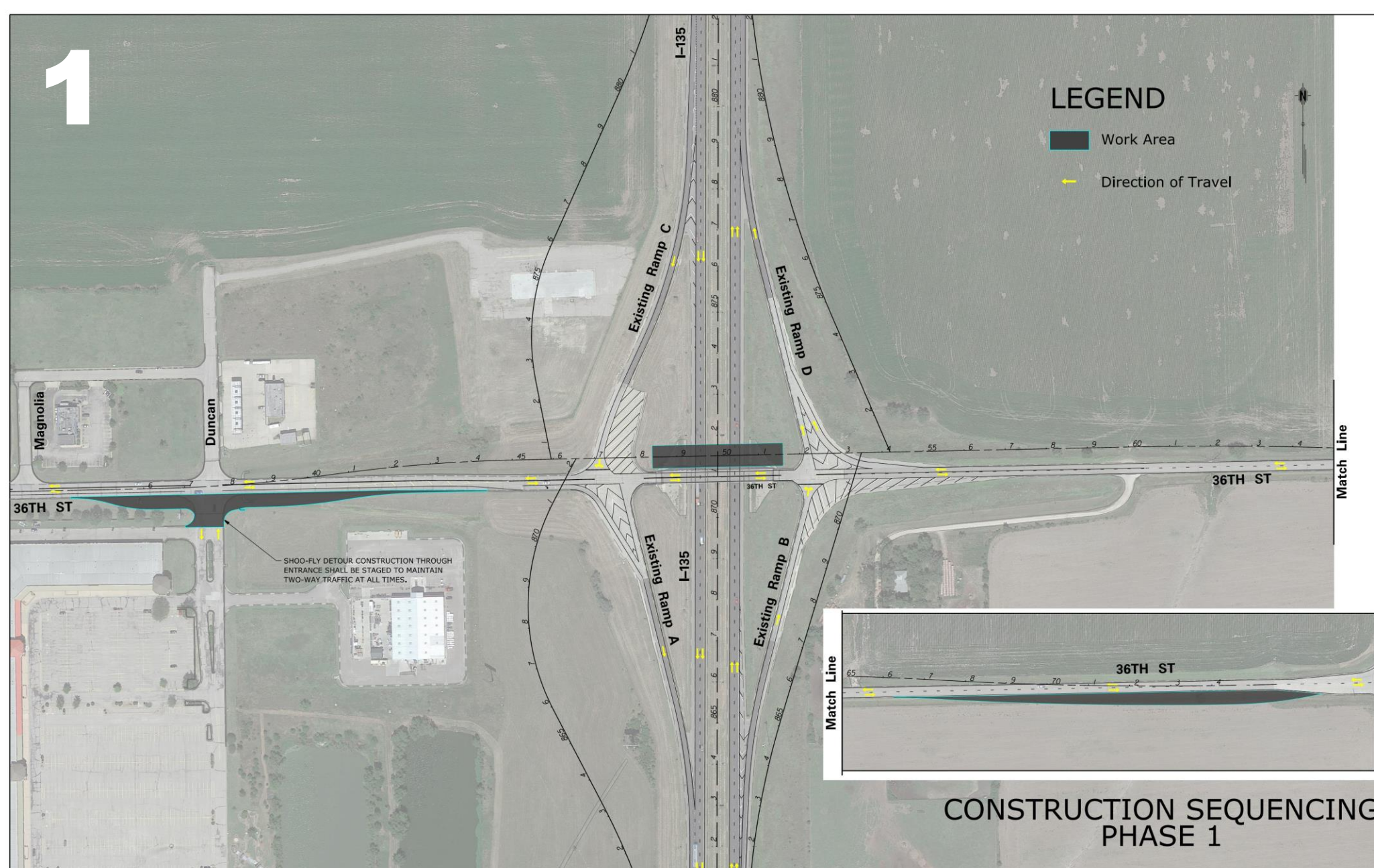
# Project Timeline



Anticipated project schedule – subject to change.



# Construction Phasing



	Phase 1	Phase 2	Phase 3	Phase 4	Phase 5	Phase 6
Work Summary	<ul style="list-style-type: none"> <li>Construction of new 36<sup>th</sup> Street bridge</li> </ul>	<ul style="list-style-type: none"> <li>Construction of new ramps on north side of interchange</li> </ul>	<ul style="list-style-type: none"> <li>Removal of existing ramps on north side of interchange</li> <li>Construction of remaining segments on 36<sup>th</sup> Street</li> </ul>	<ul style="list-style-type: none"> <li>Construction of new ramps on south side of interchange</li> </ul>	<ul style="list-style-type: none"> <li>Removal of existing 36<sup>th</sup> Street bridge</li> </ul>	<ul style="list-style-type: none"> <li>Removal of existing ramps on south side of interchange</li> </ul>
Traffic Management	<ul style="list-style-type: none"> <li>Four-lanes on I-135</li> <li>Two-way on 36<sup>th</sup> Street</li> <li>Existing ramps open</li> </ul>	<ul style="list-style-type: none"> <li>Four-lanes on I-135</li> <li>Two-way traffic on 36<sup>th</sup> Street</li> <li>Existing ramps open</li> </ul>	<ul style="list-style-type: none"> <li>Four-lanes on I-135</li> <li>Two-way traffic on 36<sup>th</sup> Street</li> <li>New north ramps open</li> <li>Existing south lanes open</li> </ul>	<ul style="list-style-type: none"> <li>Four-lanes on I-135</li> <li>Two-way traffic on 36<sup>th</sup> Street</li> <li>New north ramps open</li> <li>Existing south ramps open</li> </ul>	<ul style="list-style-type: none"> <li>I-135 lanes closed</li> <li>New ramps open to carry I-135 traffic</li> </ul>	<ul style="list-style-type: none"> <li>Four-lanes on I-135</li> <li>Two-way traffic on 36<sup>th</sup> Street</li> <li>New ramps open</li> </ul>

# Share Your Thoughts



*Your input is important!  
There are multiple ways to share  
your thoughts about the project  
either in-person or online  
through Oct. 3, 2023.*

## **1 REVIEW THE DESIGN**

*Review the planned interchange reconstruction and other potential improvements presented on the following tables.*

## **2 ASK THE PROJECT TEAM**

*Several members of the project team are available to provide information and answer questions.*

## **3 SUBMIT A COMMENT**

*Provide additional input or questions via a comment sheet. Comments may also be provided on the project website:  
[ike.ksdot.gov/i135-36th-street-interchange](http://ike.ksdot.gov/i135-36th-street-interchange)*

