



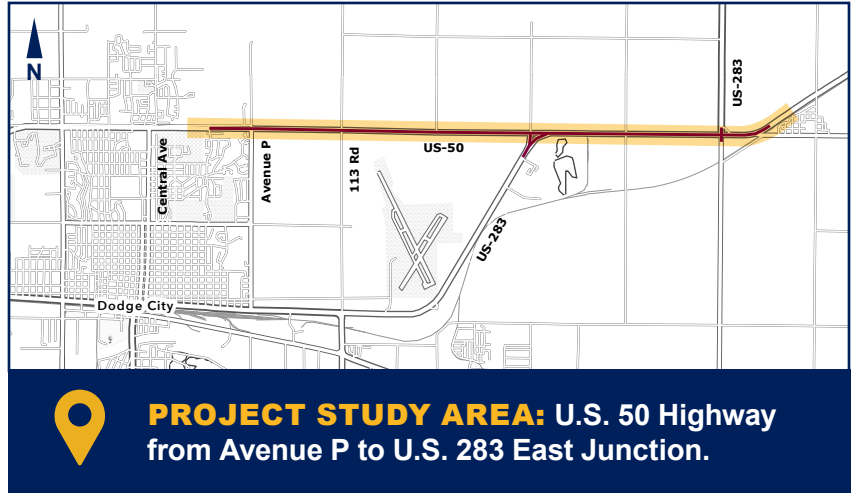
ABOUT THE PROJECT

The Kansas Department of Transportation (KDOT) is in the early stages of exploring the expansion of U.S. 50 from the east city limits of Dodge City (Avenue P) to the U.S. 283 East Junction. This improvement project aims to enhance the current roadway, considering various options such as potential modifications to road design and infrastructure upgrades. Dodge City has seen remarkable growth in the past years, with safety as the City's largest concern.

Recognizing the importance of road safety, this project prioritizes measures to mitigate these risks and create a more efficient commuting experience for all. The proposed benefits of the project could include an expanded roadway transforming the road from two to four lanes. Additionally, the plan involves improving the intersection for drivers creating an overall reduction in accidents. Alternative intersection designs, such as R-cuts and roundabouts, are under consideration for the project area.

Public communication will be integral to ongoing efforts to keep the community well-informed about updates and progress. Prior to construction, residents will also be able to provide insights and feedback on the proposed alternative routes.

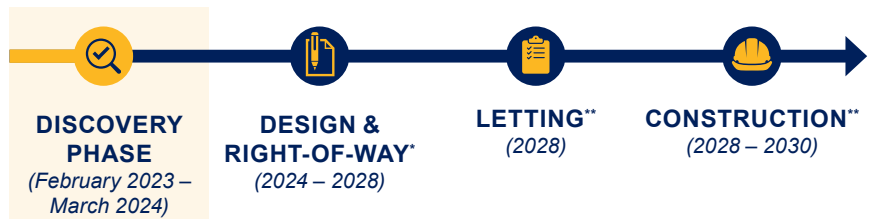
i The latest project information is available on the project webpage:
ike.ksdot.gov/us50-expansion-dodge-city-east



AT A GLANCE

Cost Estimate	\$16 Million
Distance	4.99 Miles
Scope	KDOT is exploring expanding U.S. 50 to four-lanes from east of Dodge City Avenue P to U.S. 283 East Junction.
Status	Discovery Phase

NEXT STEPS



WE ARE HERE

* Pending approval for the IKE Construction Pipeline.
** This project is not yet funded for construction. A construction timeline would be provided once selected for the IKE Construction Pipeline.

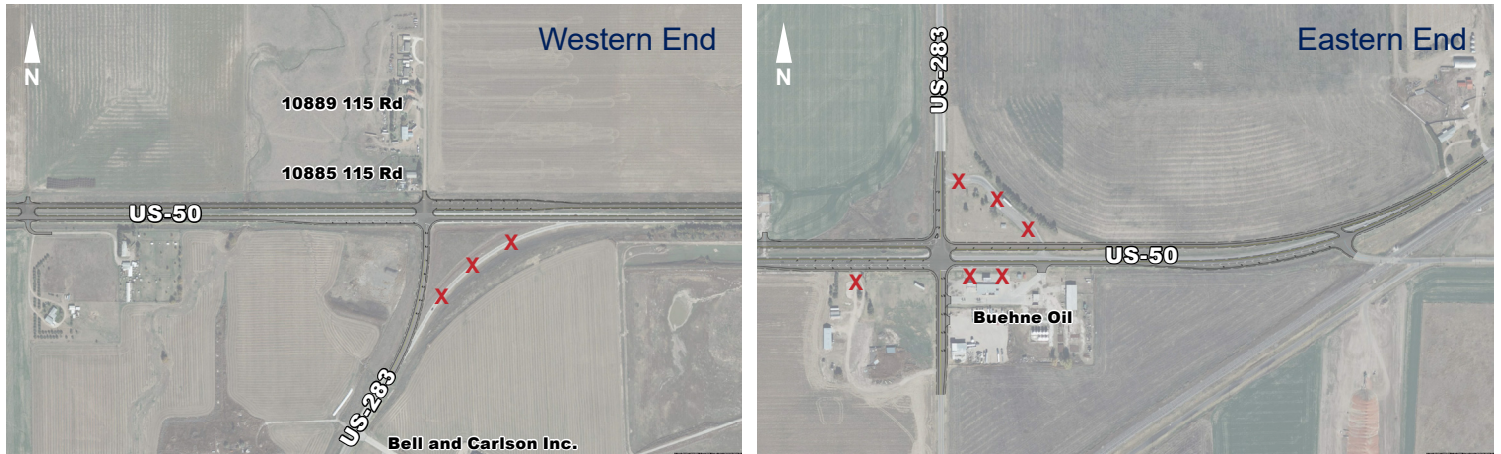
Project Contact Information:

Ron Hall
SW District Engineer
Ron.Hall@ks.gov
620.765.7074

Yazmin Moreno
Public Affairs Manager
Yazmin.Moreno@ks.gov
620.765.7080

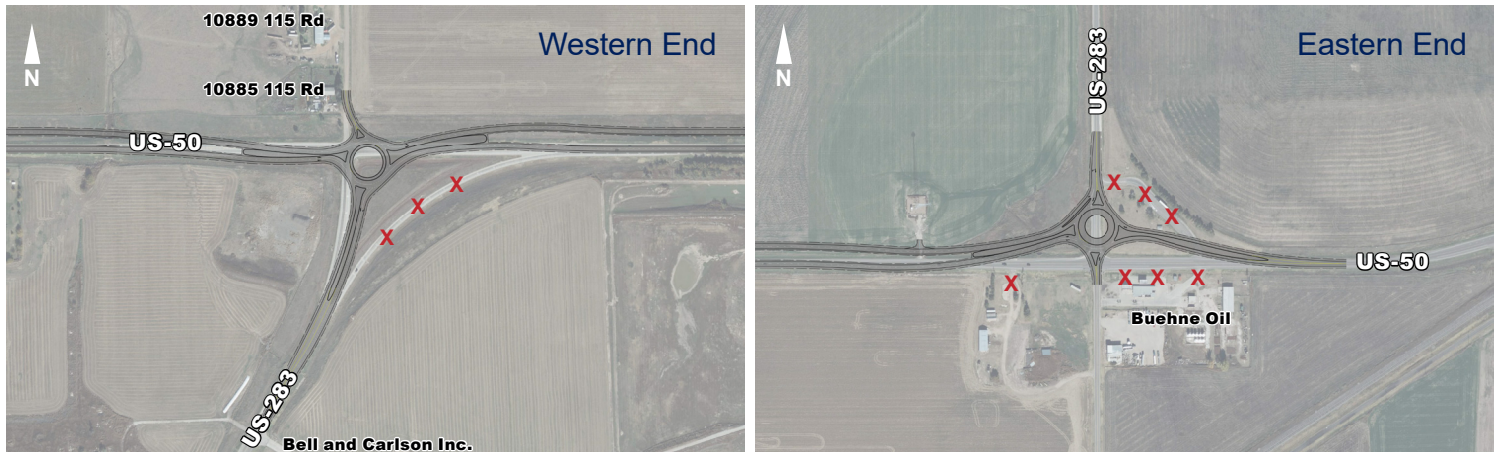
ALTERNATIVE 1: TRADITIONAL 4-WAY INTERSECTION

X = Loss of Access



Similar to the existing junctions, this alternative features 4-way, signalized interchanges.

ALTERNATIVE 2: ROUNDABOUTS



Roundabouts are circular intersections designed to direct movement counterclockwise.

ALTERNATIVE 3: R-CUTS



Restricted Crossing U-Turn (RCUT) modifies how side road traffic crosses or turns left at the highway by re-routing left-turn and through vehicles from the side road.