


CENTENNIAL
B R I D G E

WELCOME



**SCAN THE QR CODE WITH
YOUR SMART PHONE TO
VIEW THE PROJECT WEBSITE**





A VITAL CONNECTION

THE CURRENT BRIDGE:

- Serves an important transportation role.
- Has outlived its functional lifespan.
- Only has two lanes — one in each direction.
- Does not have a combined use pedestrian and bicycle path.
- Is vulnerable to flood damage from erosion, debris and barge collisions.
- Creates logistical challenges for Fort Leavenworth.





THE NEW BRIDGE

BENEFITS INCLUDE:

- The new bridge will not be tolled.
- Doubling the number of traffic lanes.
- Improving flood resilience in the area.
- Providing combined use pedestrian and bicycle accommodations.
- Resolving Missouri River navigation challenges.

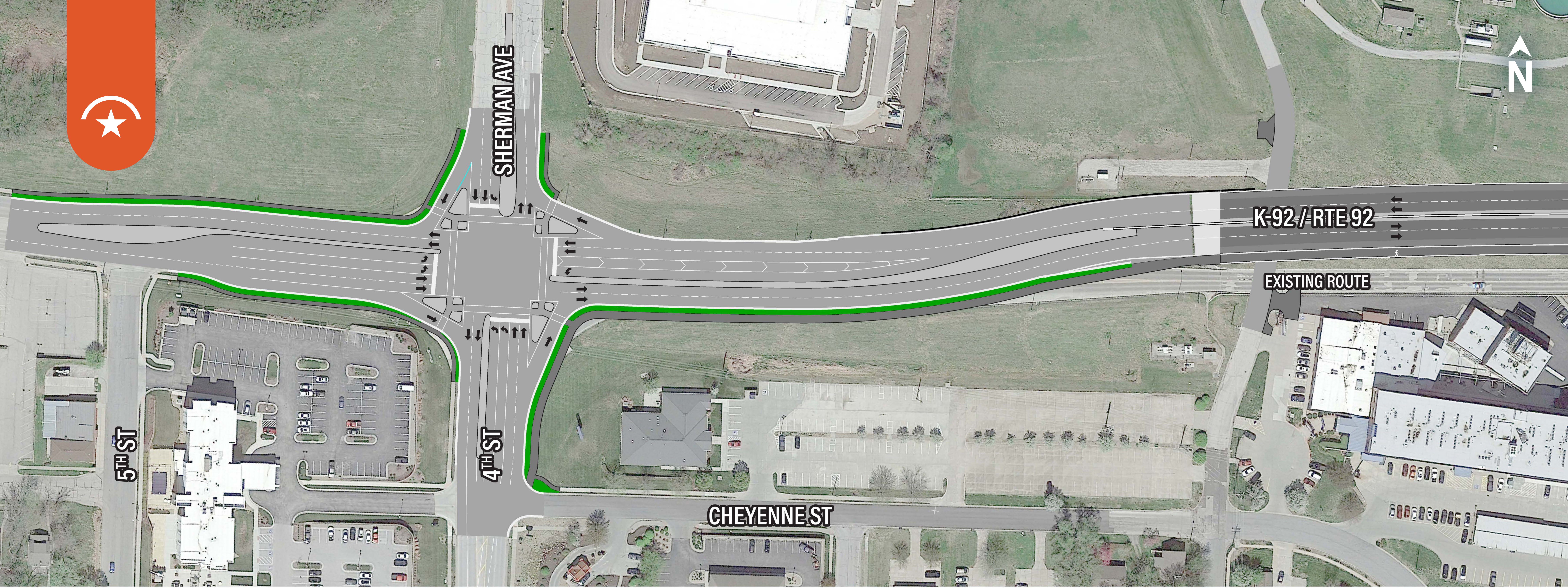


BRIDGE FEATURES

EXPANDING IN NEW DIRECTIONS BY:

- Increasing from two to four total traffic lanes (two in each direction).
- Providing a combined use pedestrian and bicycle path.
- Improving navigation clearance for river traffic.

Please note that design and aesthetic features may change due to permitting or construction needs.



KANSAS ROADWAY IMPROVEMENTS

SHERMAN AVE INTERSECTION:

- Will maintain traffic through construction.
 - With the exception of limited, temporary closures, the existing bridge will remain open as the new bridge is constructed.
- Enhanced intersection at 4th Street.
- Right-In Right-Out at 5th Street.



MISSOURI ROADWAY IMPROVEMENTS

ROUNDBABOUT OPTIMIZATION:

- Additional lanes west of roundabout.
- New westbound bypass lane.
- Traffic maintained through roundabout during construction.



AESTHETIC CONCEPTS

STRUCTURE CONSIDERATIONS

- Design incorporates characteristics of the current bridge, including arches and Centennial blue railings and light poles.
- Variable height arched railing over railroad.
- Designed using stakeholder input.

Please note that design and aesthetic features may change due to permitting or construction needs.

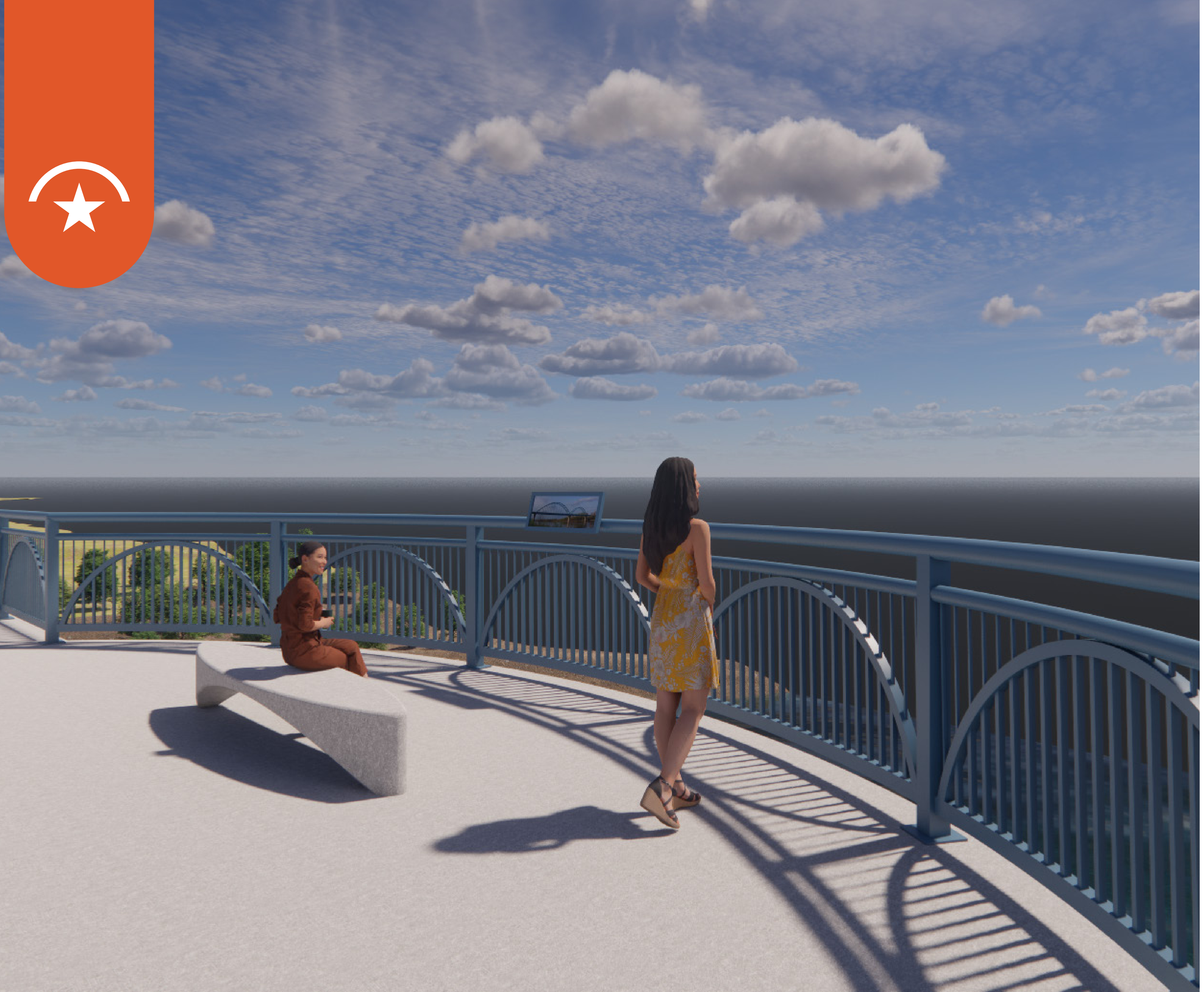


AESTHETIC CONCEPTS

RAILING, FENCING & LIGHTING FEATURES:

- Designed in collaboration with stakeholders.
- Meet Kansas, Missouri, Federal Highway Administration and railroad safety standards.
- Incorporate aspects of the current Centennial Bridge.

Please note that design and aesthetic features may change due to permitting or construction needs.



AESTHETIC CONCEPTS

OVERLOOK

- Two overlooks with seating areas.
- Scenic views face south toward the City of Leavenworth.

Please note that design and aesthetic features may change due to permitting or construction needs.



AESTHETIC CONCEPTS

BRIDGE PIER

Please note that design and aesthetic features may change due to permitting or construction needs.



MONUMENT

HIGHLIGHTING THE CITY OF LEAVENWORTH

Please note that design and aesthetic features may change due to permitting or construction needs.



CONSTRUCTION

ANTICIPATED IMPACTS DURING CONSTRUCTION:

- Ft. Leavenworth Sherman Gate Closure (1 year)
- Camp Ground Closure (1 to 2 years)
- Potential Riverfront Drive improvements



2023

FEBRUARY

★ Public Meeting

AUGUST

Environmental (NEPA) Public Hearing

OCTOBER

Field Review & City/State Agreement

2024

JANUARY

Begin Right-of-Way Activities

2025

2025

Continue Right-of-Way Activities

2026

APRIL

★ Complete Right-of-Way Activities

JUNE

★ Design Complete

AUGUST

Bid Letting*

2027

EARLY 2027

★ Construction Begins*

2028

2029

2029

Construction Complete*

★ New Centennial Bridge Opens*

Old Centennial Bridge Demolished*

★ Key milestones

*Tentative date pending approval for construction.











ENVIRONMENTAL

An Environmental Assessment (EA) is required by NEPA (National Environmental Policy Act) and is administered by the Federal Highway Administration.

THE EA PROCESS:

- Gathers information on existing conditions:
 - Natural Resources
 - Human Environment
 - Physical Resources
- Considers a range of reasonable alternatives.
- Analyzes potential impacts of alternatives on existing conditions.
- Complies with other applicable environmental laws and executive orders.
- The EA also documents impacts to Section 4(f) resources, including Riverfront Park and the Centennial Bridge. FHWA is seeking comments on the EA and Section 4(f) Evaluation.

ENVIRONMENTAL STUDIES

-  Threatened/endangered species
-  Wetlands and streams
-  Water quality
-  Air quality
-  Historic and cultural sites
-  Social and economic resources
-  Noise environs
-  Community impacts



IMPACT SUMMARY

RESOURCE	MEASURE	NO-BUILD ALTERNATIVE	PREFERRED ALTERNATIVE
Residential Land Use	Acres Impacted	0	0
Parks and Recreation and Section 4(f) / 6(f)	Number of Facilities	0	2; Riverfront Park and Centennial Bridge
Historical Sites and Districts	Number of Sites/Districts	0	1; Centennial Bridge
Wetlands and Waters of the United States	Acres Impacted	0	2.93 acres of wetlands and 2.75 acres of stream
Floodplains and Floodways	Resource Impacted	No	Yes
Threatened and Endangered Species	Number of Species Impacted	0	4; not likely to adversely affect
Noise	Quantity	0	No significant change in dBA to noise receptors
Visual	Overall Impacts	No	No adverse effects



ENVIRONMENTAL

WHAT ARE SECTION 4(F) RESOURCES?

Section 4(f) resources are significant historic sites and public lands such as parks, recreational areas, and wildlife and waterfowl refuges.

HOW WILL THE PROPOSED PROJECT AFFECT SECTION 4(F) RESOURCES?

- Riverfront Park: de minimis (negligible)
- Abernathy Historic Building: No impact
- Centennial Bridge: Adverse Effect

FHWA is seeking public review and comment on the impacts to Section 4(f) resources, detailed in the Environmental Assessment and Section 4(f) Evaluation document available here at the public meeting, at newcentennialbridge.ksdot.gov, and at the Leavenworth Public Library.


CENTENNIAL
B R I D G E

**THANK YOU
FOR COMING!**

