



# WELCOME

## PLEASE SIGN IN

# U.S. 56 RECONSTRUCTION PROJECT IN DOUGLAS COUNTY OPEN HOUSE

# U.S. 56 Reconstruction Project



## Project Description

The U.S. 56 Reconstruction Project will enhance safety and travel on the 3.5-mile corridor between Baldwin City and the U.S. 59 interchange in Douglas County. Current roadway design has limited sight distance for passing vehicles, narrow shoulders, and steep slopes off the roadway. Reconstruction efforts will include cutting down the roadway's profile to increase sight distance and passing opportunities for drivers, widening the shoulders to 10 feet, and flattening slopes next to the roadway. These design efforts will improve traffic flow and safety for road users along this section of U.S. 56.

## At-A-Glance

<b>Cost Estimate</b>	\$16.4 Million
<b>Distance</b>	3.5 Miles
<b>Scope</b>	Roadway reconstruction based on 44-foot roadway with 10-foot shoulders, add acceleration and deceleration lanes as warranted, replace culvert.
<b>Status</b>	Final Design Phase

## Project Area

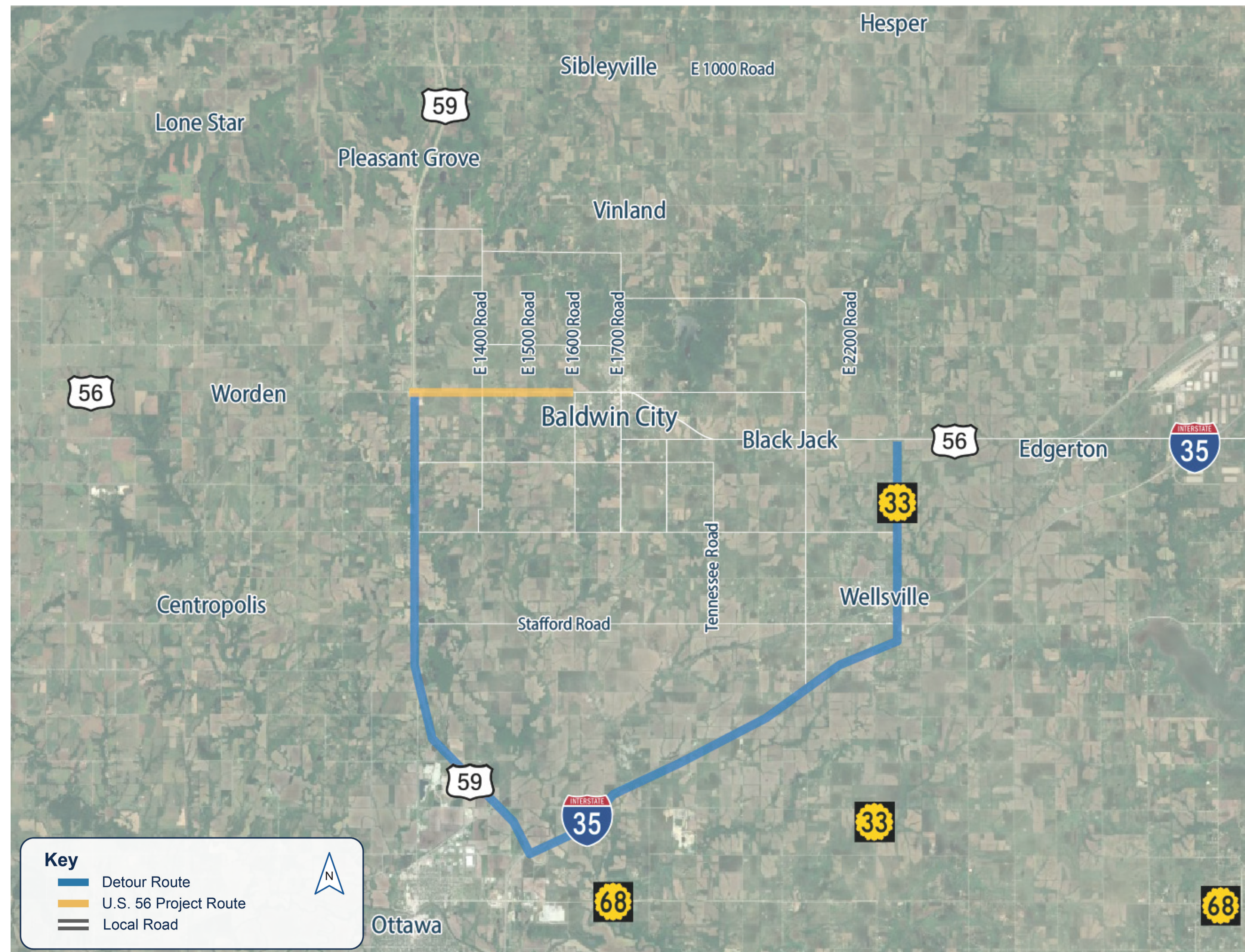


# U.S. 56 Reconstruction Project

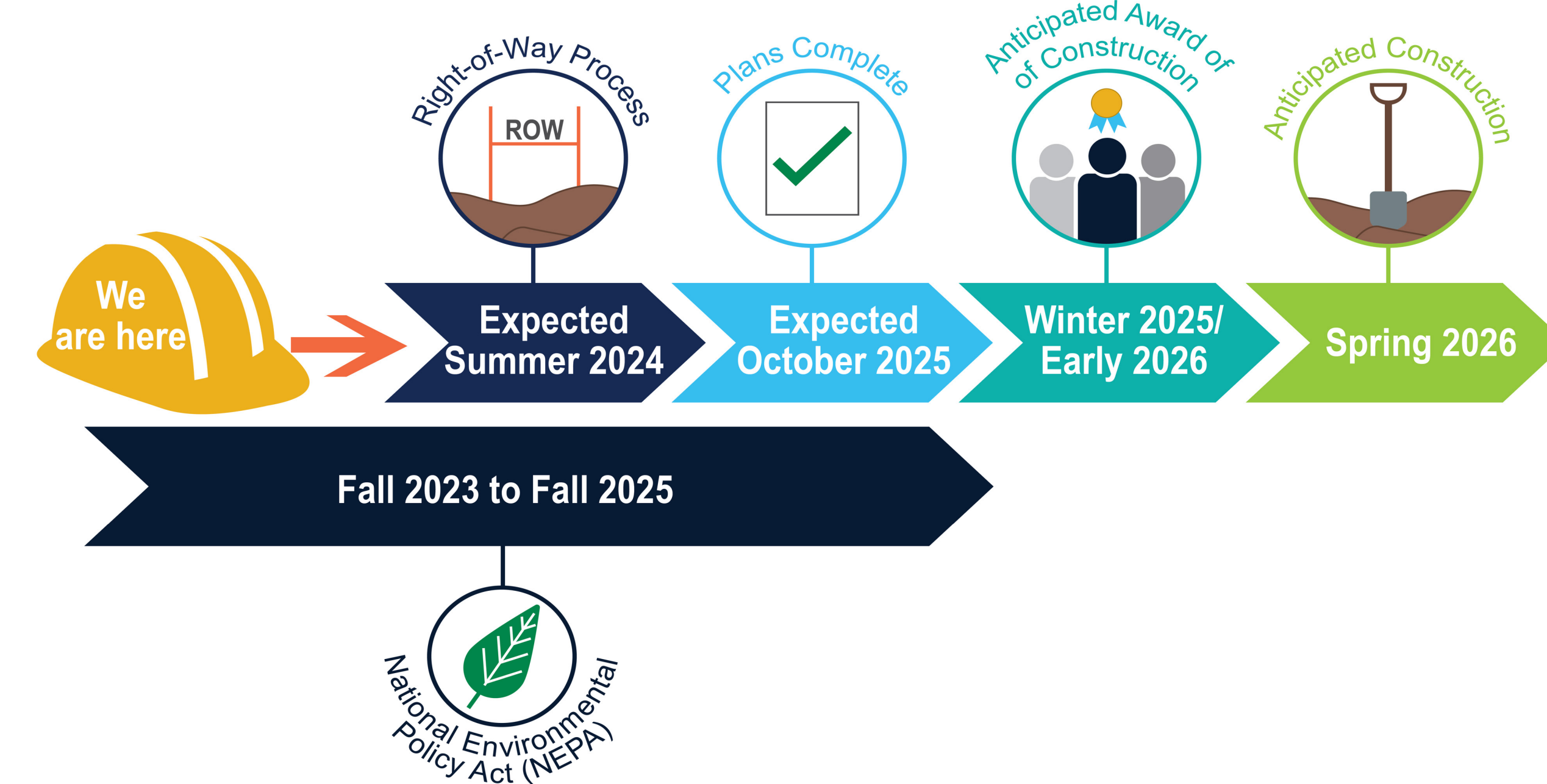


## Expected Detour

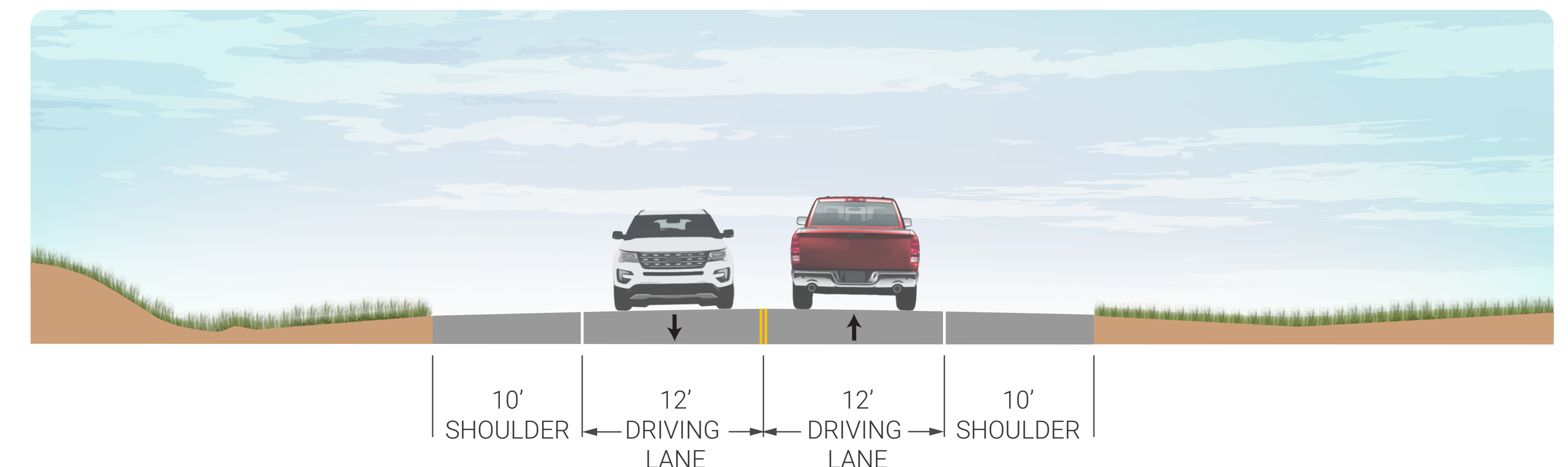
The signed detour will run from U.S. 59 south to I-35 and then direct roadway users north to K-33 to get back to U.S. 56. Alternate detours utilizing other roadways are available, but will not be signed.



## Project Timeline



## Future Section



# U.S. 56 Reconstruction Project



## Frequently Asked Questions (FAQs)

Q1. Why is KDOT planning this project?

A1. KDOT identified these improvements to this corridor that increase roadway width, remove hills to improve sight distance, and flatten slopes adjacent to the roadway.

Q2. Why are you widening the roadway?

A2. Widening the roadway will offer increased road safety along this highway section and improve traffic flow.



Q3. Is this project in the IKE Construction Pipeline?

A3. This project is not currently in the IKE Construction Pipeline.

Q4. How will this impact the Maple Leaf Festival?

A4. Project work will require this section of U.S. 56 to fully close for one construction season. Maple Leaf Festival attendees who use U.S. 56 to travel to Baldwin City can follow the marked detour routes or use other routes that are not marked.

