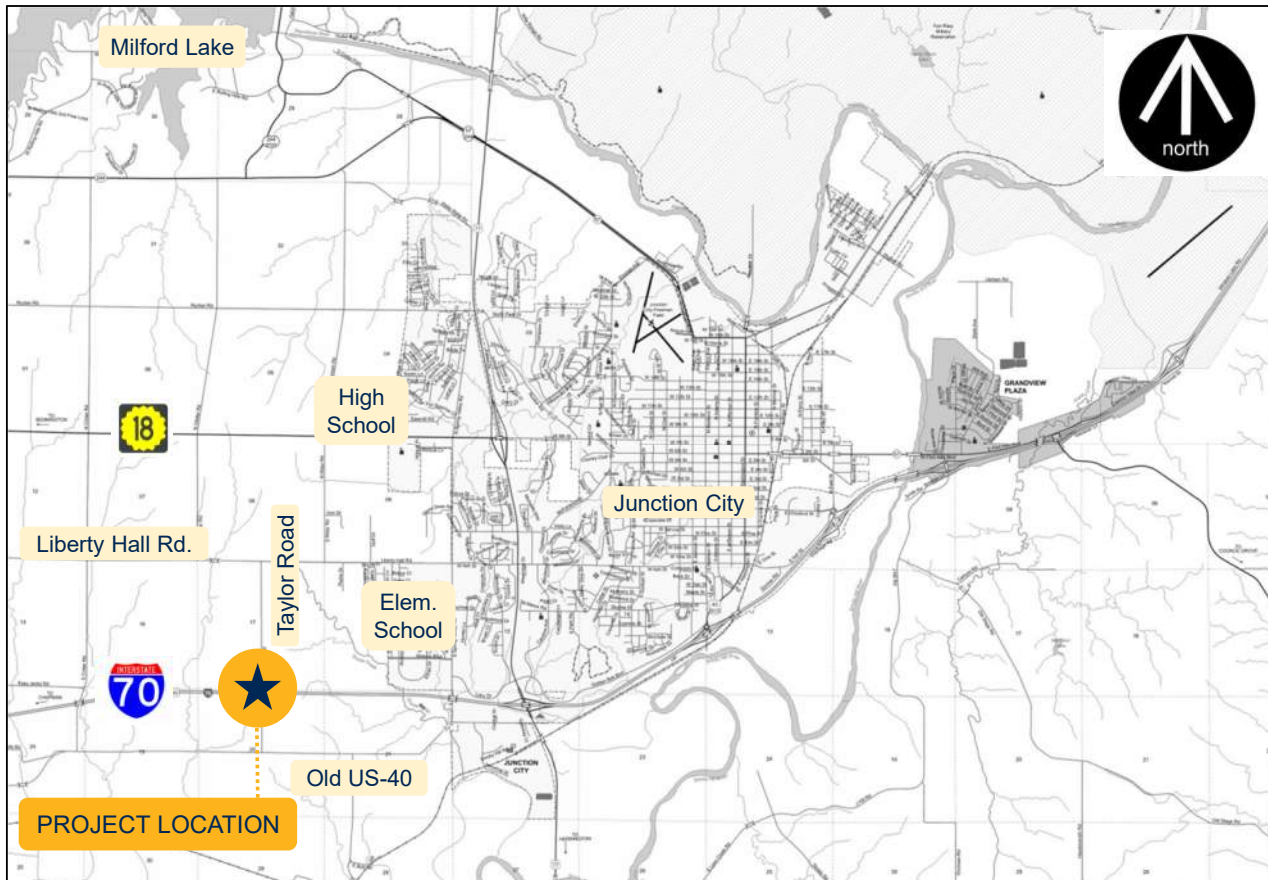


# LOCATION & SCHEDULE



## Project Timeline

2021 <i>Fall</i>	<b>LOCAL CONSULT MEETINGS</b>  Projects were selected for engineering design based on performance factors and public input.
2023 <i>January</i>	<b>BEGIN CONCEPT STUDY</b>  Initial survey, traffic counts, and concepts were developed by the project team.
2023 <i>July</i>	<b>PUBLIC MEETING</b>  Local input is sought to understand issues and priorities that impact project implementation.
2023 <i>Summer</i>	<b>FINALIZE STUDY</b>  Based on Engineering review and input from the public, final recommendations are made, and preliminary design begins.
2025-2026	<b>RIGHT OF WAY ACQUISITION</b>  Using the preliminary design plans, needed right of way will be identified and acquired in accordance with state and federal requirements.
2027-2028	<b>POSSIBLE CONSTRUCTION</b>  Construction of the project is contingent on KDOT funding and local investments.

I-70 & Taylor Road  
KDOT Proj. 70-31 KA-6541-01  
Geary County



# BACKGROUND



## EXISTING CONDITIONS



## PROJECT ELEMENTS

- Bridge Replacement
- Possible Interchange Access
- Connect to Local Streets
- Lighting (for Interchange Option)



*This project was identified as the top priority for District 2 through Fall 2021 Local Consult Process.*

**PURPOSE AND NEED:** To replace existing bridge, provide safe access to I-70, and support locally driven development patterns.

I-70 & Taylor Road  
KDOT Proj. 70-31 KA-6541-01  
Geary County





# DESIGN ALTERNATIVE ONE



## BRIDGE REPLACEMENT ONLY – NO NEW I-70 ACCESS



*Taylor Road to be closed during construction.  
I-70 to remain open at all times.*

### LEGEND

- RED** Access Road with Future Interchange Accommodation
- GREEN** No Future Interchange Accommodation

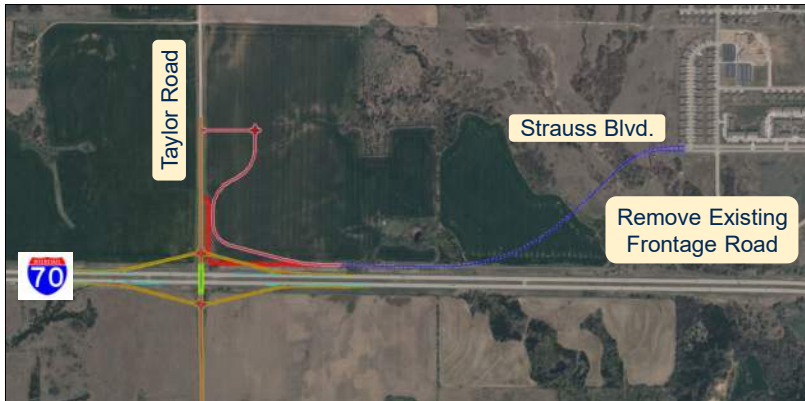
I-70 & Taylor Road  
KDOT Proj. 70-31 KA-6541-01  
Geary County



# DESIGN ALTERNATIVE TWO



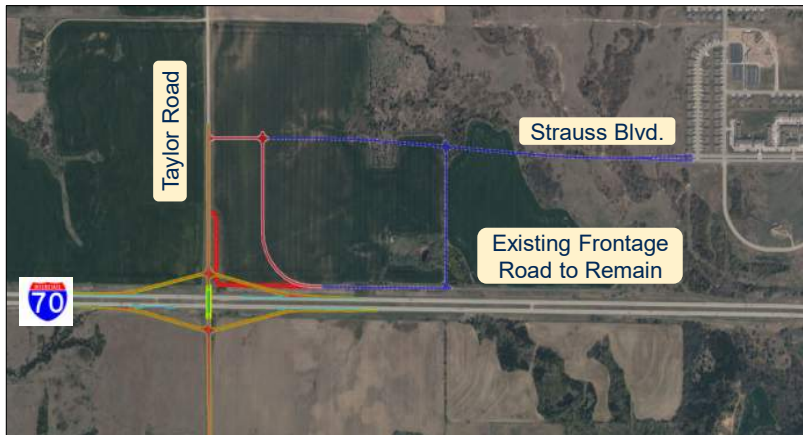
## NEW INTERCHANGE AT I-70 AND TAYLOR ROAD



2A: Frontage Road Near Taylor Road; Sweeping Connection



2B: Backage Road Near Taylor Road; Sweeping Connection



2C: Backage Road with Future Strauss Blvd. Extension (Grid Pattern)



2D: Remove Existing Frontage Road with Future Strauss Blvd. Extension

**LEGEND**  
RED Access Road with Project  
BLUE Access Road By Others

I-70 & Taylor Road  
KDOT Proj. 70-31 KA-6541-01  
Geary County





# NEXT STEPS



<i>JULY 2023:</i>	<i>PUBLIC OPEN HOUSE</i>
<i>SUMMER 2023:</i>	<i>FINALIZE STUDY</i>
<i>2025-2026:</i>	<i>RIGHT OF WAY ACQUISITION</i>
<i>2027:</i>	<i>FINAL DESIGN</i>
<i>2027-2028:</i>	<i>POSSIBLE CONSTRUCTION*</i>

*\*Construction of the project is contingent on KDOT funding.*

I-70 & Taylor Road  
KDOT Proj. 70-31 KA-6541-01  
Geary County

