



Project Overview

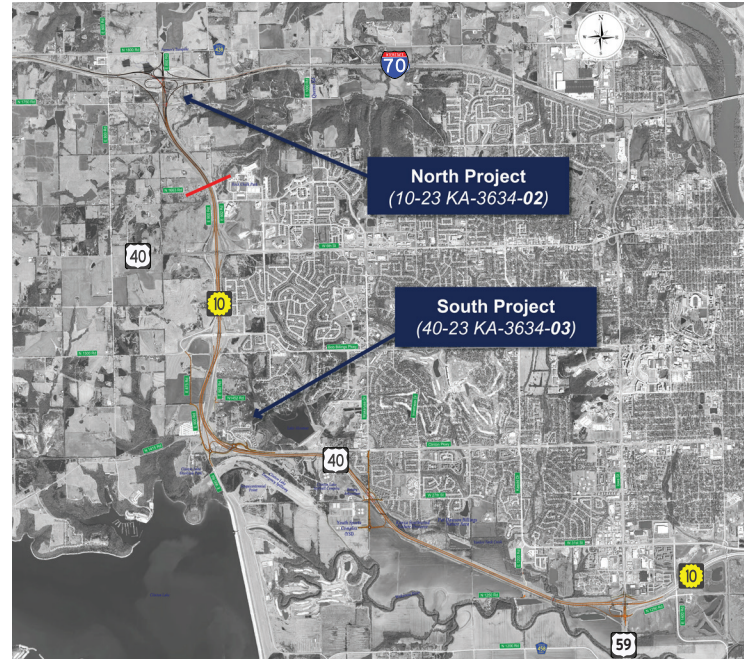
The K-10/South Lawrence Trafficway (SLT) is a vital corridor serving the local community and regional commuters. The K-10/SLT project is focused on improving safety and mobility for the K-10/SLT corridor and surrounding highway system, including alleviating strain on the City of Lawrence street network.

The entire West Leg of the K-10/SLT will be widened from two to four lanes. Construction will be divided into two projects, north and south. Construction has begun on the south project which includes expanding K-10/SLT from a two-lane road to a median divided, four-lane highway and reconstructing the Wakarusa Drive, Clinton Parkway, and U.S. 59 interchanges.

Project Improvements

Improvements to the K-10/SLT south project include:

- Widen K-10/SLT to a four-lane, median separated highway. The SLT corridor will be a fully access controlled highway.
- Improve U.S. 59 and Clinton Parkway interchanges.
- Maintain Bob Billings Parkway and 6th Street interchanges.
- Add new interchange at Wakarusa Drive. The existing intersection will be eliminated and access to Wakarusa Drive and 27th Street will now be through a grade-separated interchange, which means K-10 will go over Wakarusa Drive and 27th Street. Traffic traveling along K-10/SLT will no longer be signal controlled. Access to and from the local streets will be on ramps.



Project location map.

i Project Details

Cost Estimate	Approximately \$264 million (\$170.6M for the south project, \$93M for the north)
Distance	9 miles
Scope	Add two lanes to K-10/SLT to create a four-lane divided highway and other roadway improvements.
Status	South project construction starting

Project Contacts

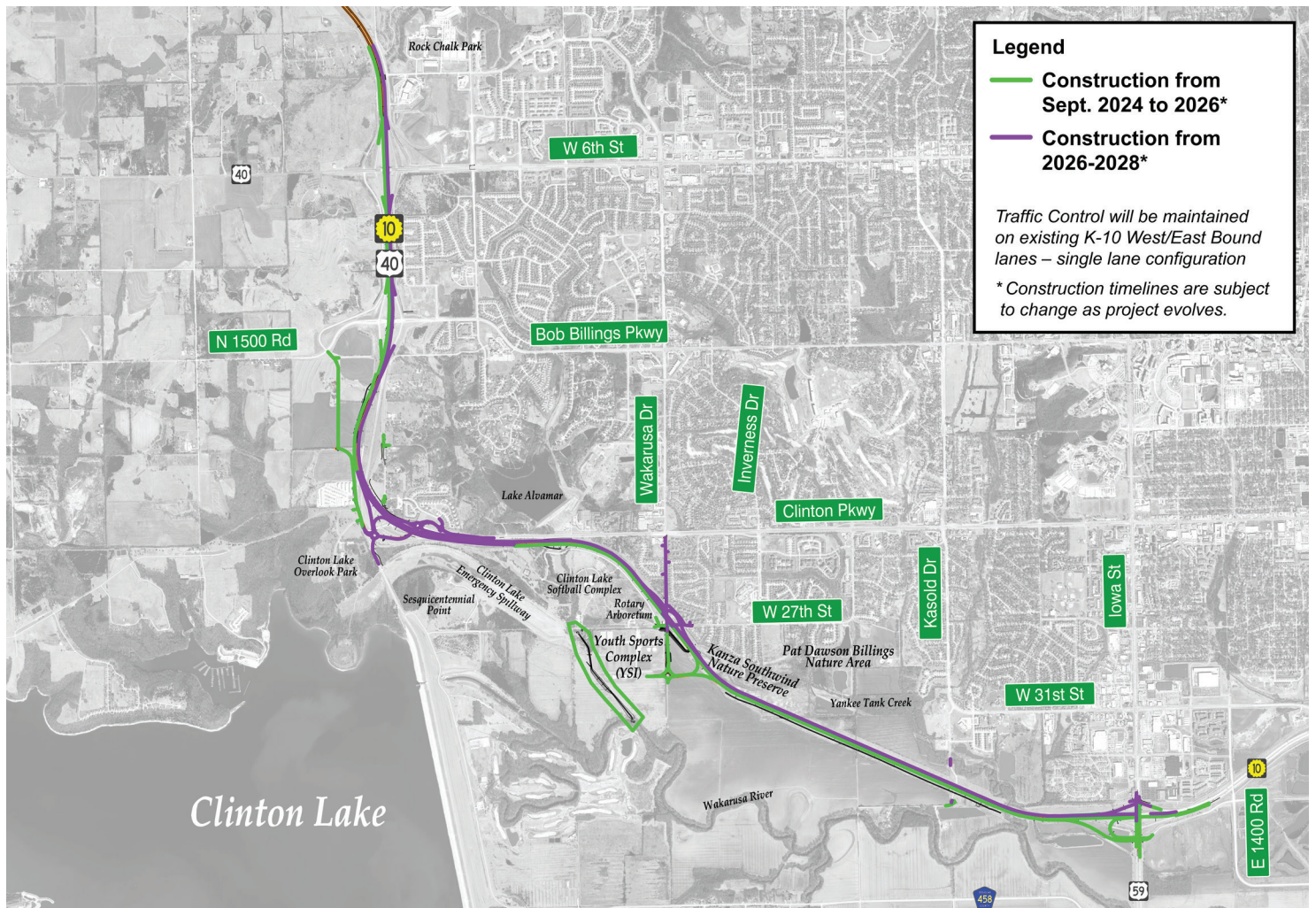
Steven Cross, P.E.
KDOT Project Manager
✉ Steven.Cross@ks.gov
☎ 785-296-3901

Kate Craft
Public Information Officer
✉ Kate.Craft@ks.gov
☎ 785-296-0192



SLT South Project Construction

Construction for the south project, which extends on K-10/SLT from U.S. 40/6th Street south and east to U.S. 59, began in the fall of 2024. Greater impacts to traffic will begin in early 2025. The map below shows the anticipated construction phasing.



Stay Informed

Stakeholders can sign up for project updates at the project website or follow the project team on social media.

Facebook: NEKansasKDOT **X/Twitter:** <https://x.com/NEKansasKDOT>

Website: <https://slt-ks.ksdot.gov/>