

# I-70 Polk-Quincy Viaduct: The West Project 70-89 KA-1266-04

Community Open House  
May 4<sup>th</sup>, 2023



 **STREETLIGHT DATA**  
Big Data for Mobility



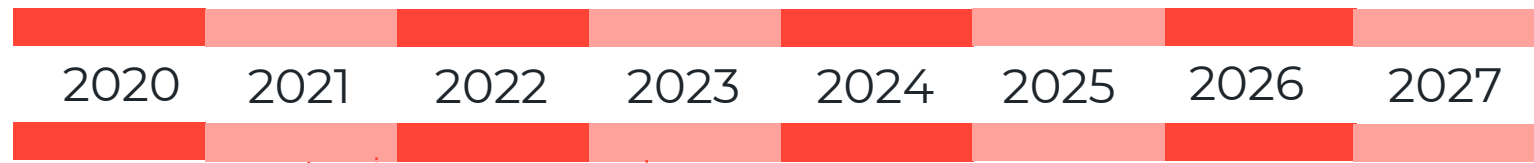
YOUR  
STORIES  
OUR  
HISTORY | **KANSAS  
HISTORICAL  
SOCIETY**



U.S. Department of Transportation  
**Federal Highway Administration**



# Project Timeline



- July**
  - Plans to Utilities
  - Selected for Construction Pipeline
- Jan** Bid Demolition Project
- May 4** Community Open House
- Oct**
  - Right of Way Acquisition Begins
  - Environmental Assessment shows Finding of No Significant Impact
- Oct** PQV Project Letting
- April** Pre-Construction Community Open House
- CONSTRUCTION**
  - Construction Begins Spring 2025
  - Construction Ends Fall 2027
  - \*Dates tentative, based on weather and other factors that can affect the construction cycle.

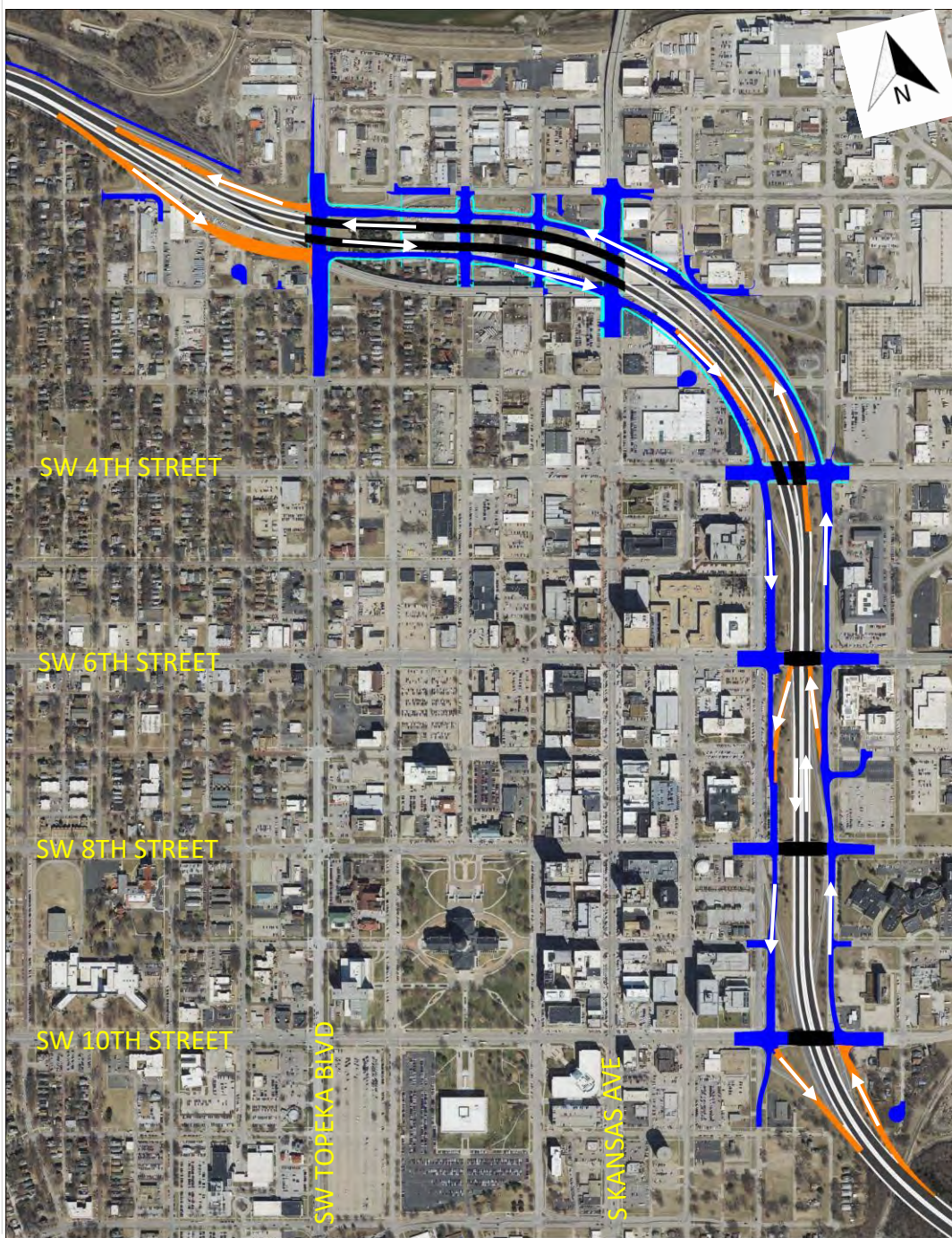
## Project History

- Concept Study in 2011
- Field Check Design in the KDOT TWORKS program – stopped in 2015
- **I-70 Polk Quincy from MacVicar to 6<sup>th</sup> Street**
  - Selected for Development Pipeline “IKE” – Eisenhower Legacy Transportation Program - 2020
  - Selected for Construction Pipeline “IKE” – Eisenhower Legacy Transportation Program – 2021
- Viaduct bridge condition prioritized the west project for selection
- KDOT did a maintenance project on the existing viaduct in 2023 to keep it operating short term






# Project Overview

## 2 Split Diamond



- Split Diamond Interchange at Topeka Blvd. / Kansas Ave. (West project)
- Split Diamond Interchange at 8th Street / 10th Street (East project)

### Legend

-  Frontage Roads or City Streets
-  I-70 Ramps
-  I-70 Highway and Viaduct Bridges

# Design Concept



## I-70 TOPEKA Polk-Quincy Viaduct



**LEGEND**

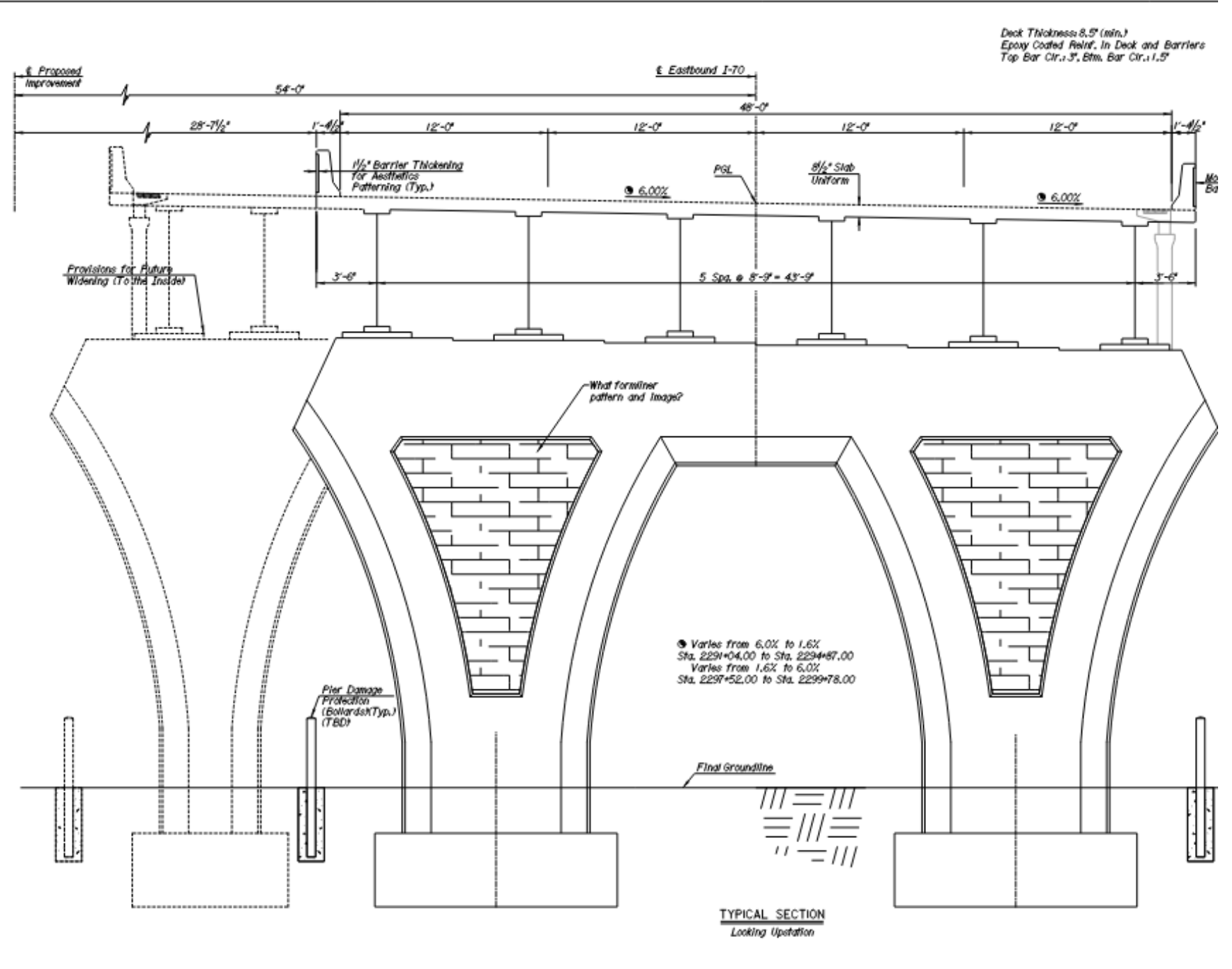
- PROPOSED BRIDGE
- PROPOSED ROADWAY
- PROPOSED RAMP
- PROPOSED SIDEWALK

# Bridge Section

# Expandable to Inside



## I-70 TOPEKA Polk-Quincy Viaduct

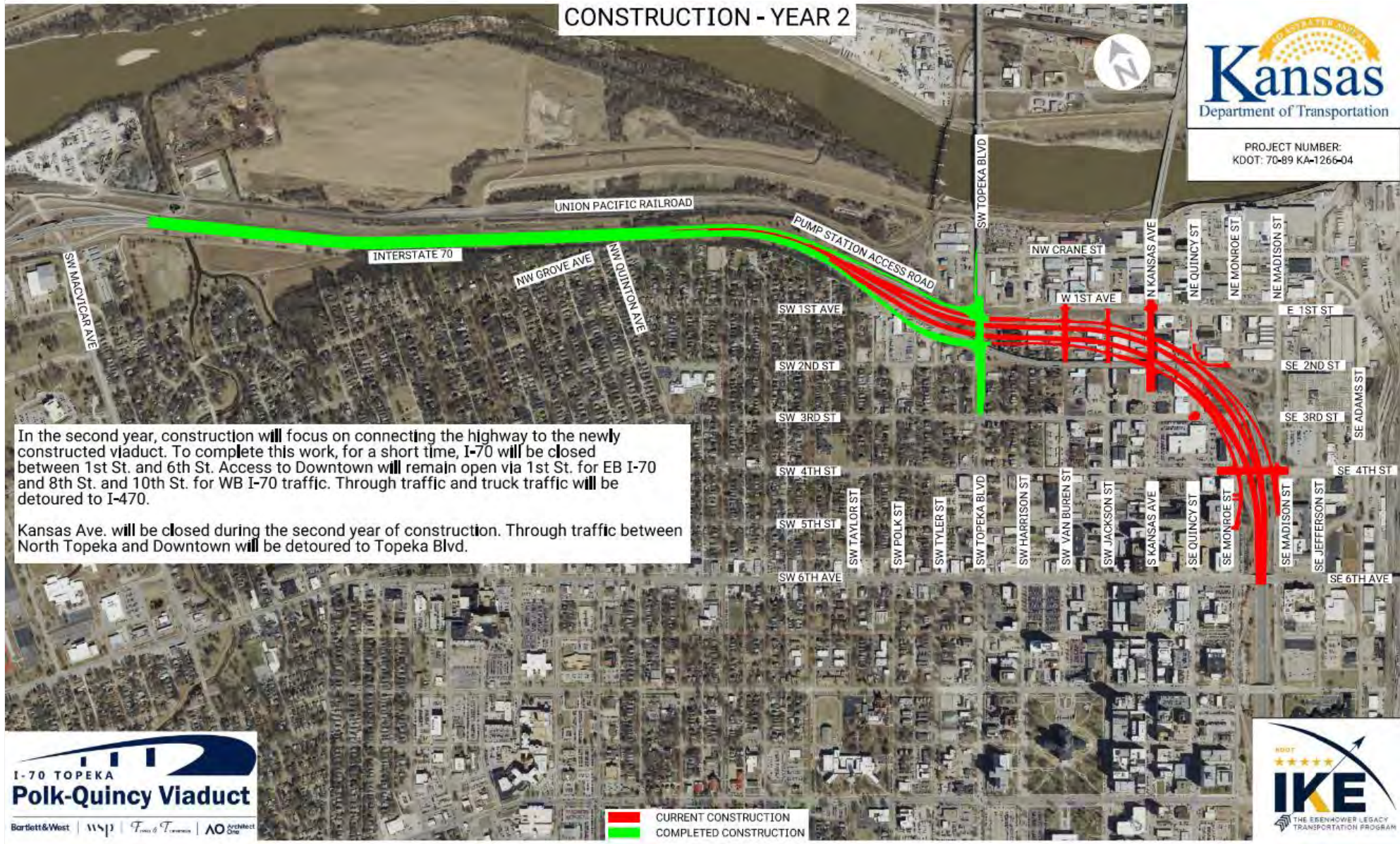


# Initial Construction Sequencing





# Initial Construction Sequencing



In the second year, construction will focus on connecting the highway to the newly constructed viaduct. To complete this work, for a short time, I-70 will be closed between 1st St. and 6th St. Access to Downtown will remain open via 1st St. for EB I-70 and 8th St. and 10th St. for WB I-70 traffic. Through traffic and truck traffic will be detoured to I-470.

Kansas Ave. will be closed during the second year of construction. Through traffic between North Topeka and Downtown will be detoured to Topeka Blvd.

**I-70 TOPEKA  
Polk-Quincy Viaduct**

Bartlett&West | wsp | Finney & Thompson | AO Architect One

KDOT  
★★★★★  
**IKE**  
THE EISENHOWER LEGACY  
TRANSPORTATION PROGRAM

**I-70 TOPEKA  
Polk-Quincy Viaduct**

Bartlett&West | wsp | Finney & Thompson

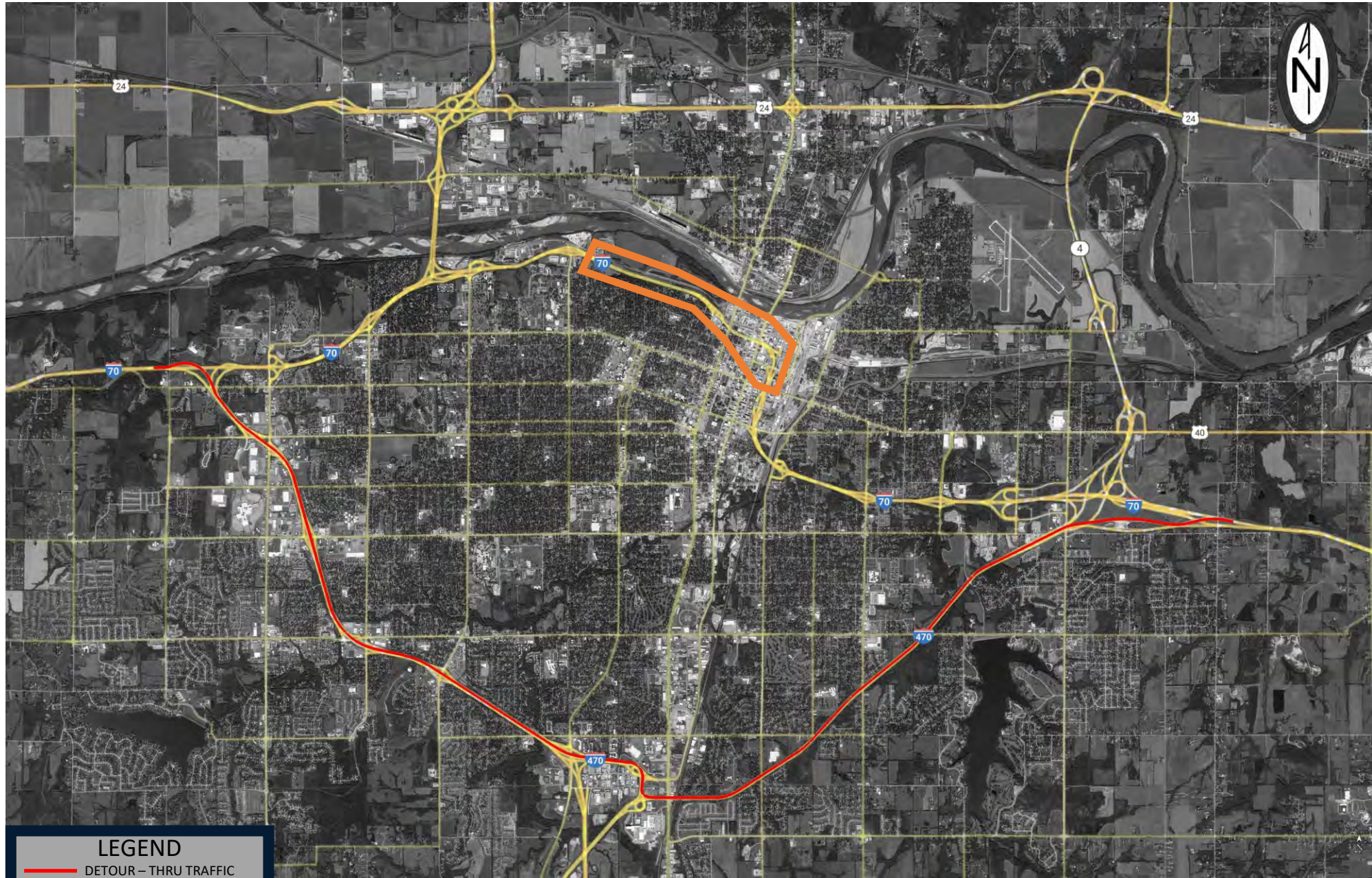
KDOT  
★★★★★  
**IKE**  
THE EISENHOWER LEGACY  
TRANSPORTATION PROGRAM

## Construction Schedule

- Downtown access via I-70 from MacVicar to Topeka Boulevard at all times
  - Provides access to downtown from the West
  - Helps reduce detour traffic through City streets on MacVicar and 6<sup>th</sup> Street
- I-70 thru traffic will be detoured to I-470 at the beginning of the project
- I-70 closure is minimized to Year 2
  - Closure from early spring to late fall of 2026
  - Eastbound I-70 lanes open first with head-to-head traffic
- Investigating innovative approach to project bidding to minimize closure time and traffic impacts

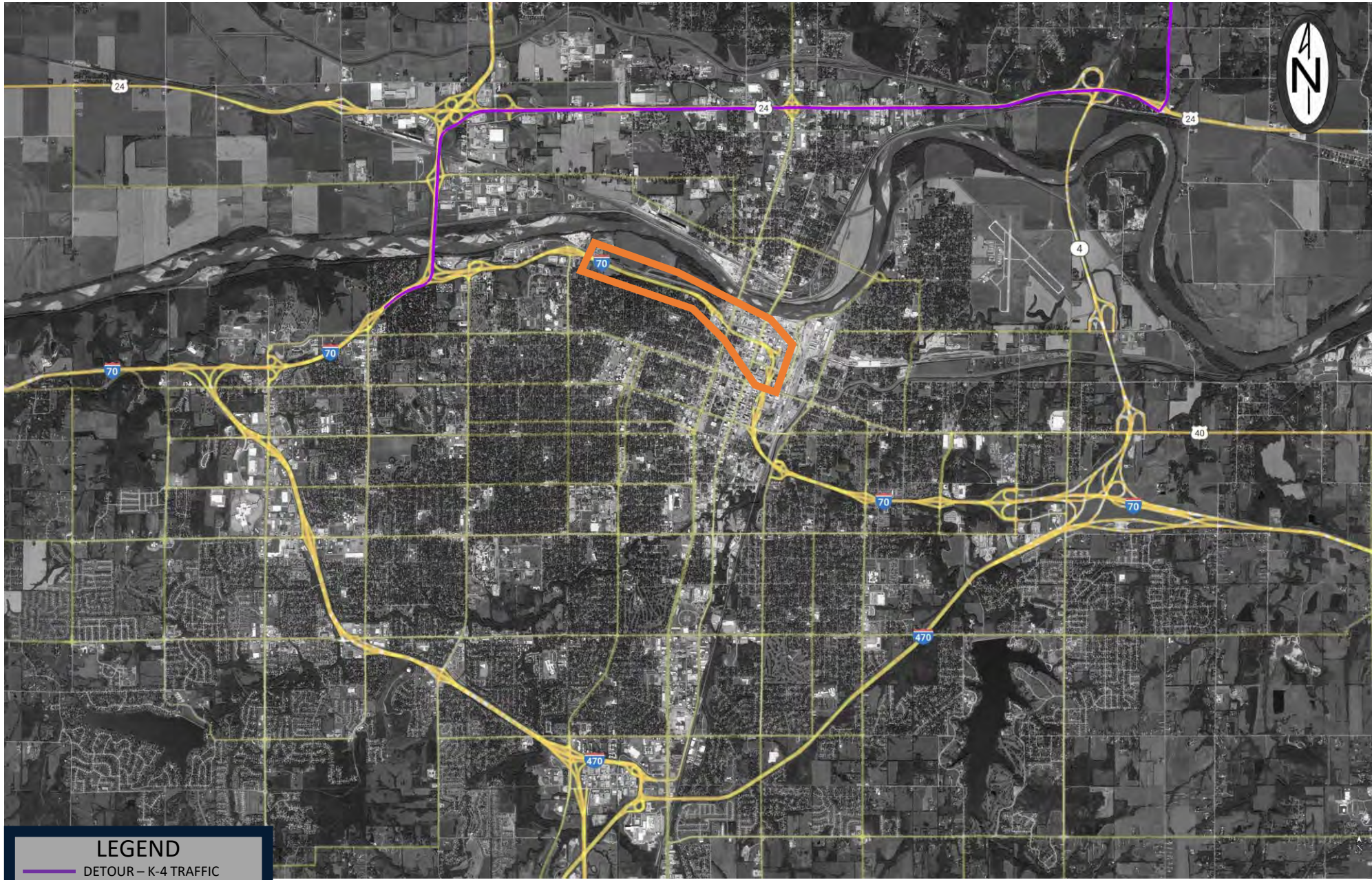


# Detour for I-70 Thru Traffic



LEGEND	
	DETOUR - THRU TRAFFIC
	PROJECT LIMITS

# Detour for EB I-70 Traffic to K-4



**LEGEND**  
— DETOUR – K-4 TRAFFIC  
— PROJECT LIMITS

# Detour for EB I-70 Truck Traffic



**LEGEND**  
— DETOUR – TRUCK TRAFFIC  
— PROJECT LIMITS

## Demolition Project

- KDOT March 2022 Letting
- Buildings demolished starting in September 2022
- Allows Kansas State Historic Preservation Office investigation to be completed
- Jackson Street to remain open throughout
- Completed by the end of 2024



I-70 TOPEKA  
**Polk-Quincy Viaduct**

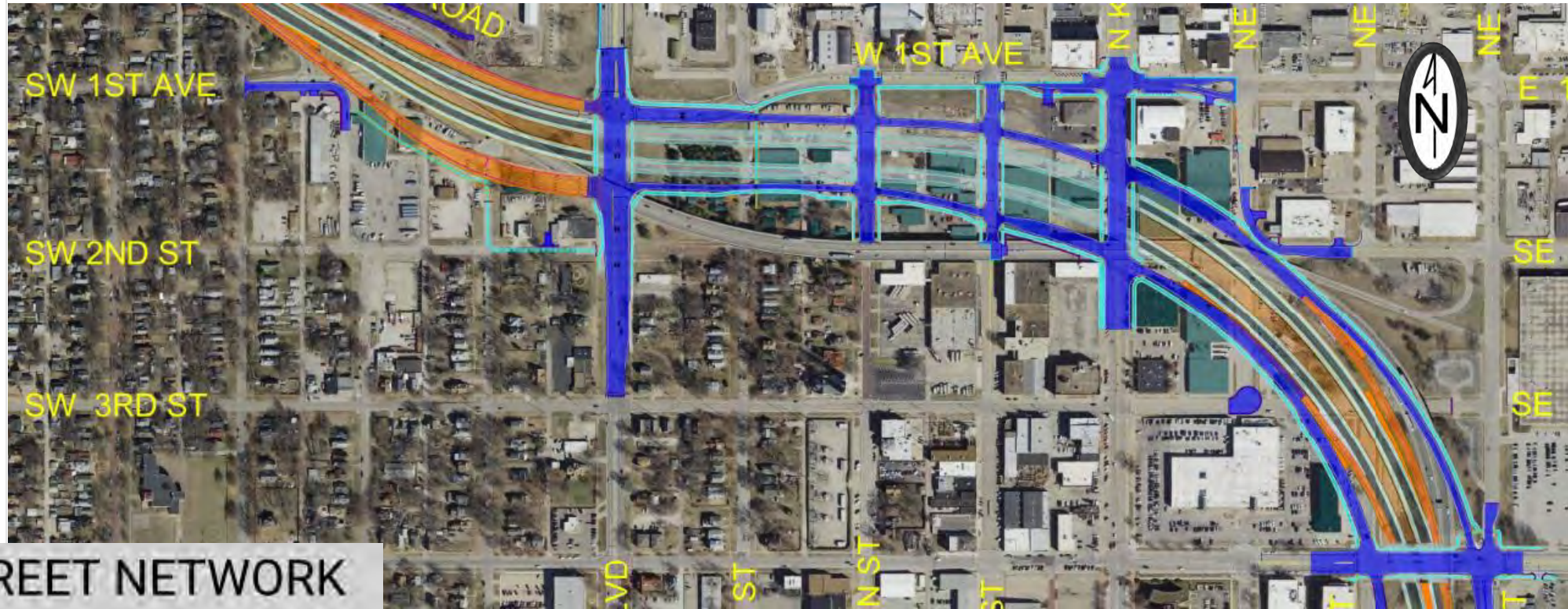
—  
Right-of-Way


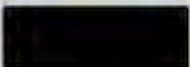

- KDOT has acquired most properties
- A few remain in the acquisition process



**Sidewalks/  
Shared Use Paths  
Bike Lanes**

- On-street bike lanes on Van Buren and 4<sup>th</sup> Street
- Shared use path:
  - Eastbound – Topeka Blvd. to 4<sup>th</sup> Street
  - Westbound – 4<sup>th</sup> Street to Kansas to 1<sup>st</sup> Street to Topeka Blvd.
  - Both sides of Kansas Avenue, Harrison Street connection



	CITY STREET NETWORK
	PROPOSED STRUCTURES
	PROPOSED SIDEWALKS



## Schedule

- **Plans to Right-of-Way** \_\_\_\_\_ **Spring 2021**
- **Demo –06 Phase** \_\_\_\_\_ **March 2022 letting**
- **Demolition Begins** \_\_\_\_\_ **September 2022**
- **Utility Relocation**
  - **Design / Coordination** \_\_\_\_\_ **All of 2022**
  - **Relocation** \_\_\_\_\_ **Mid 2023 to Summer 2024**
- **Final Design** \_\_\_\_\_ **2021-2024**
- **Plans to Traffic Engineering** \_\_\_\_\_ **October 2022**
- **Plans Complete** \_\_\_\_\_ **July 2024**
- **Letting** \_\_\_\_\_ **October 2024**

