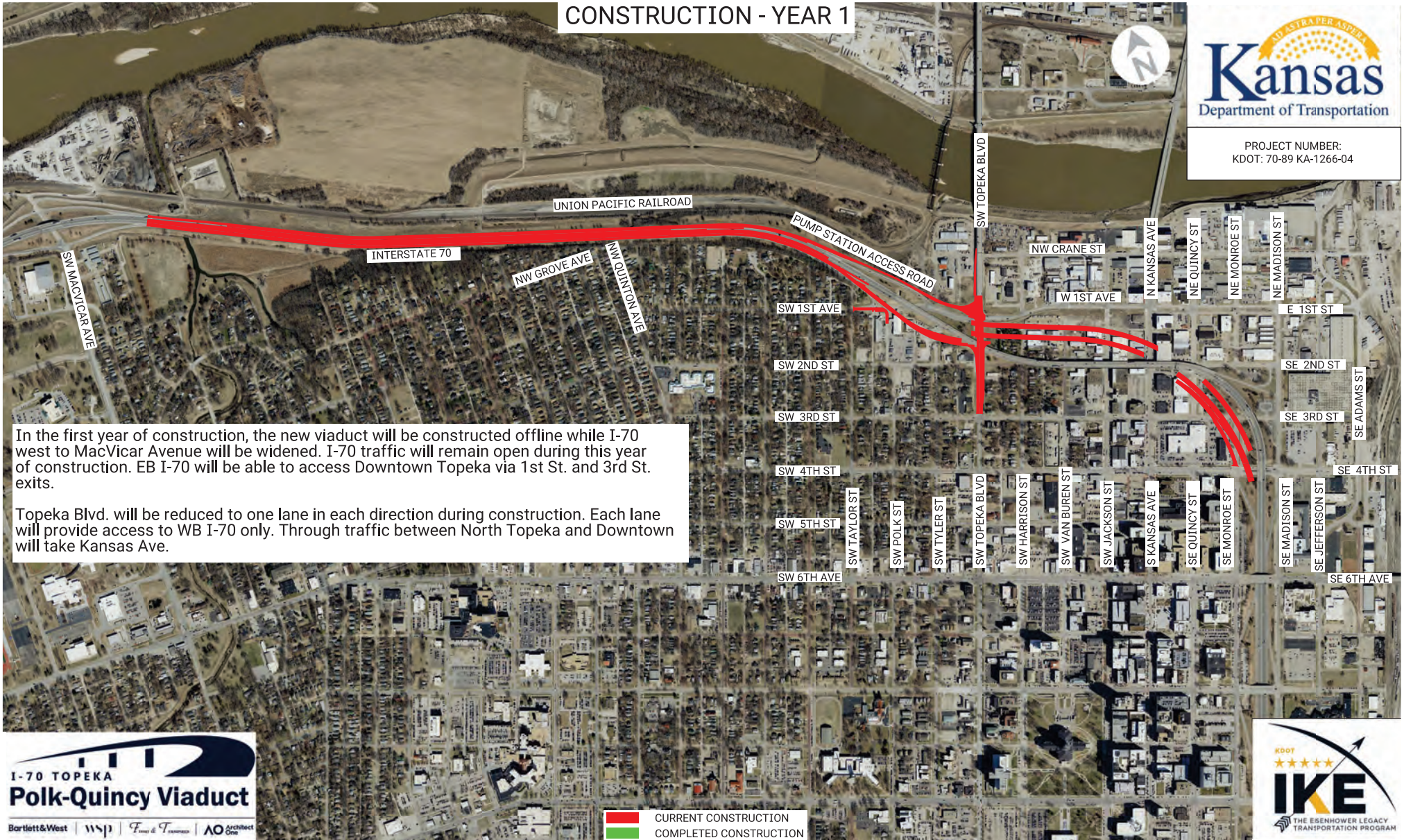


# CONSTRUCTION - YEAR 1



PROJECT NUMBER:  
KDOT: 70-89 KA-1266-04



In the first year of construction, the new viaduct will be constructed offline while I-70 west to MacVicar Avenue will be widened. I-70 traffic will remain open during this year of construction. EB I-70 will be able to access Downtown Topeka via 1st St. and 3rd St. exits.

Topeka Blvd. will be reduced to one lane in each direction during construction. Each lane will provide access to WB I-70 only. Through traffic between North Topeka and Downtown will take Kansas Ave.

**I-70 TOPEKA**  
**Polk-Quincy Viaduct**

Bartlett & West | WSP | Fernald & Thompson | AO Architect One

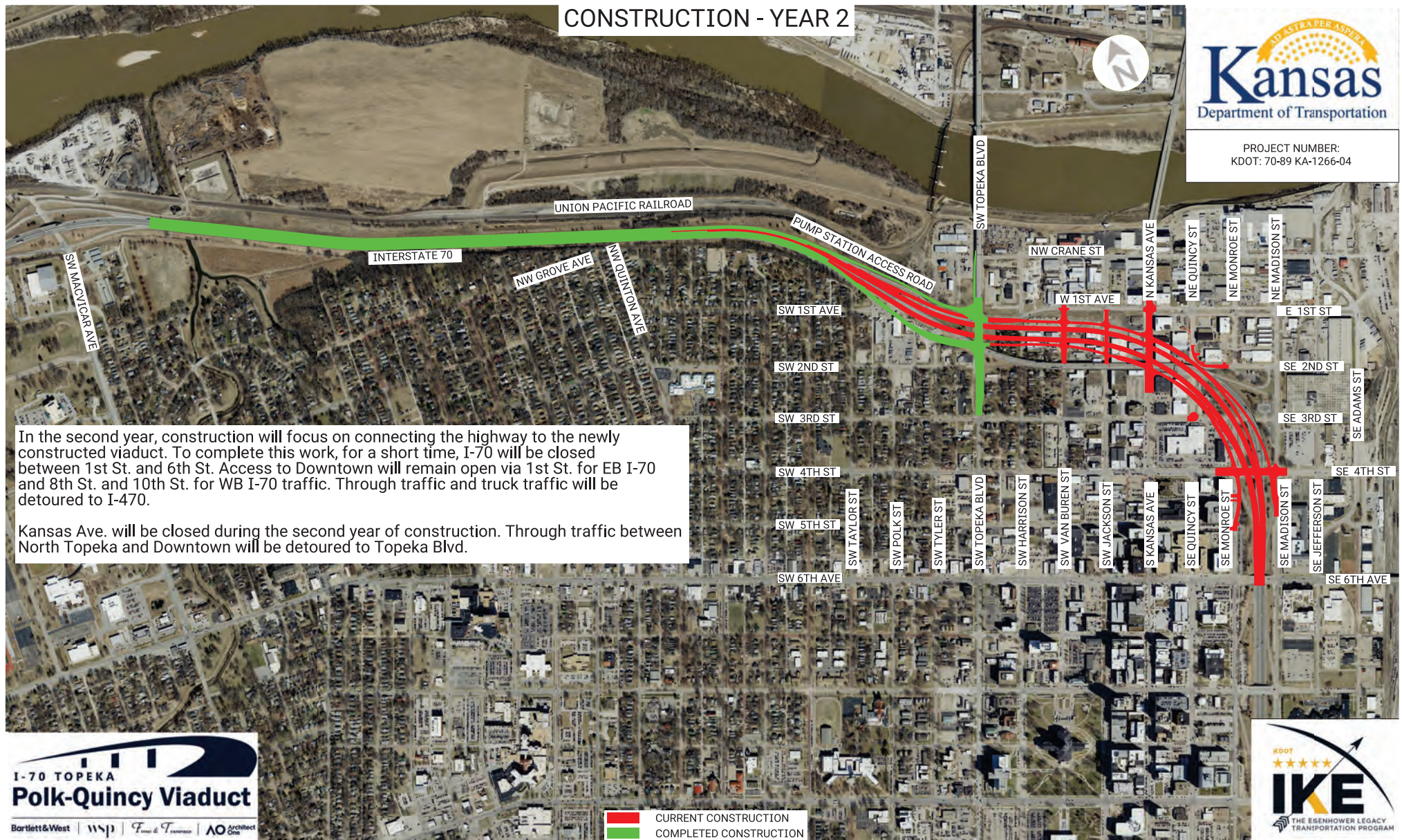
█ CURRENT CONSTRUCTION  
█ COMPLETED CONSTRUCTION



# CONSTRUCTION - YEAR 2



PROJECT NUMBER:  
KDOT: 70-89 KA-1266-04





In the second year, construction will focus on connecting the highway to the newly constructed viaduct. To complete this work, for a short time, I-70 will be closed between 1st St. and 6th St. Access to Downtown will remain open via 1st St. for EB I-70 and 8th St. and 10th St. for WB I-70 traffic. Through traffic and truck traffic will be detoured to I-470.

Kansas Ave. will be closed during the second year of construction. Through traffic between North Topeka and Downtown will be detoured to Topeka Blvd.

**I-70 TOPEKA**  
**Polk-Quincy Viaduct**

Bartlett & West | WSP | Fernald & Thomas | AO Architect One

 CURRENT CONSTRUCTION  
 COMPLETED CONSTRUCTION

