

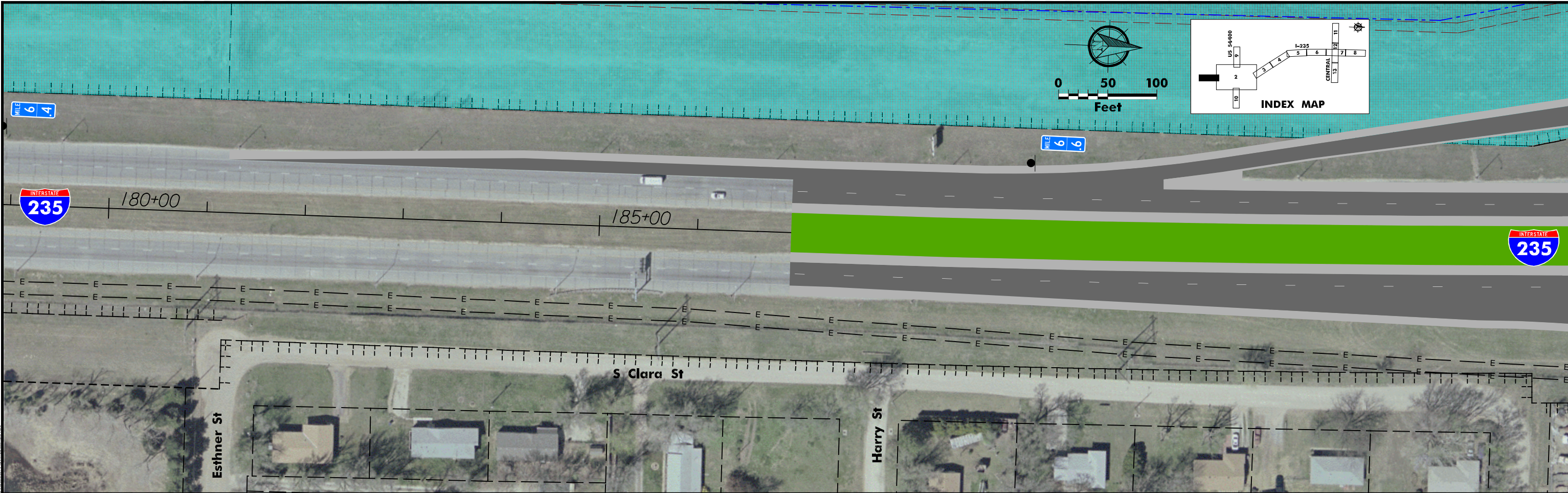
PREFERRED CONCEPT MAPS

**For Existing Condition Maps,
see Technical Memoranda**

Volume #1

Existing Conditions

submitted June 2006



07/12/07



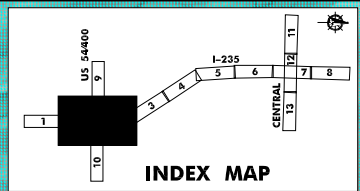
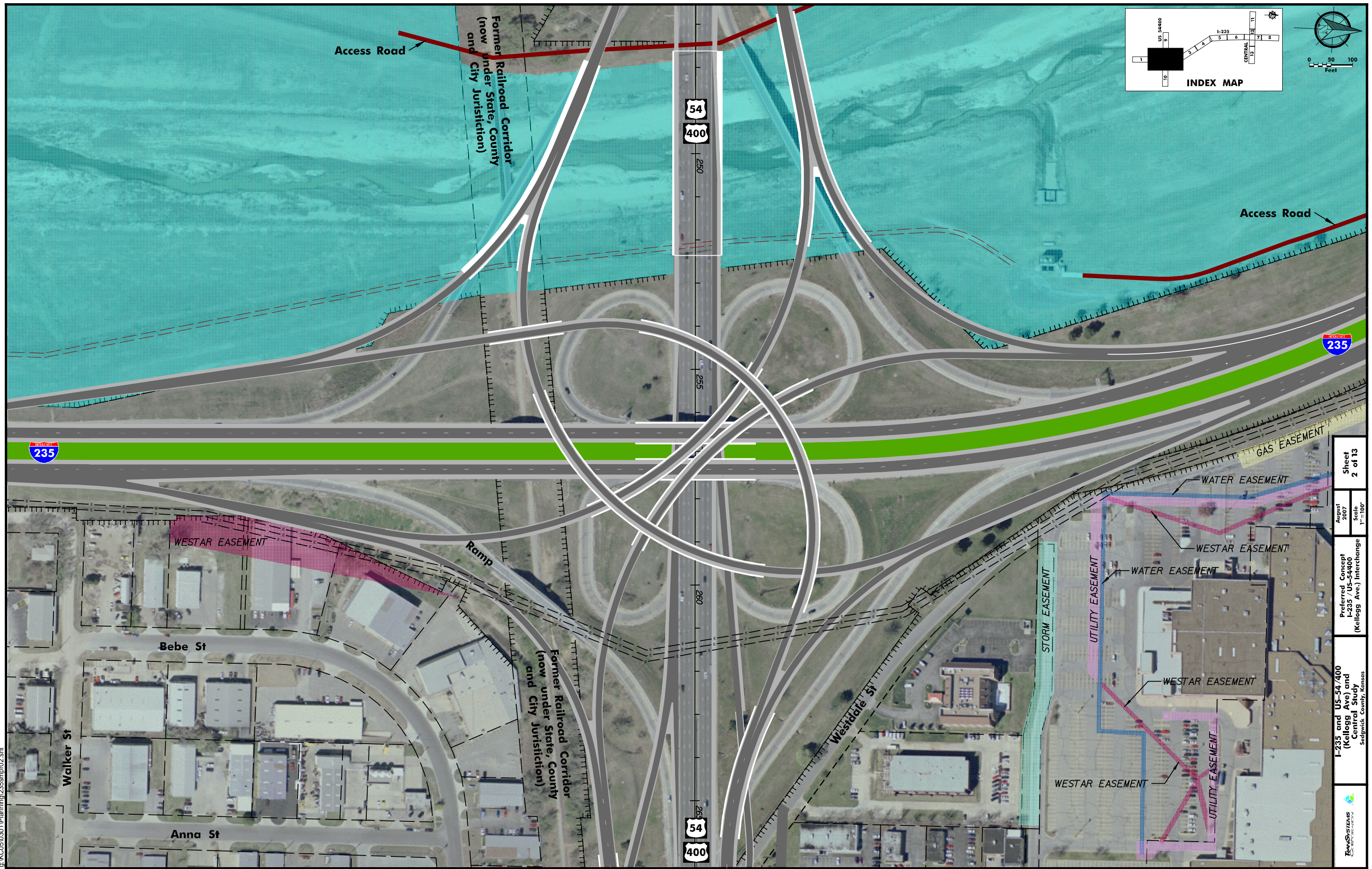
I-235 and US-54/400
 (Kellogg Ave) and
 Central Study
 Sedgewick County, Kansas

Preferred Concept
 I-235

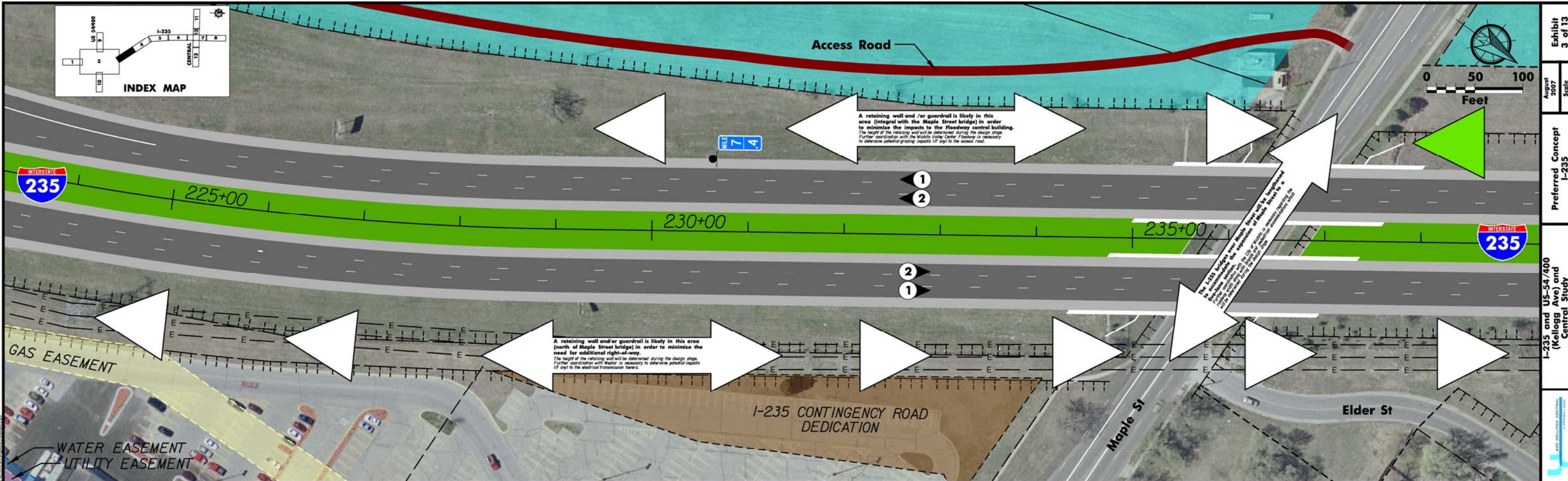
August
 2007
 Scale
 1" = 50'

Sheet
 1 of 13

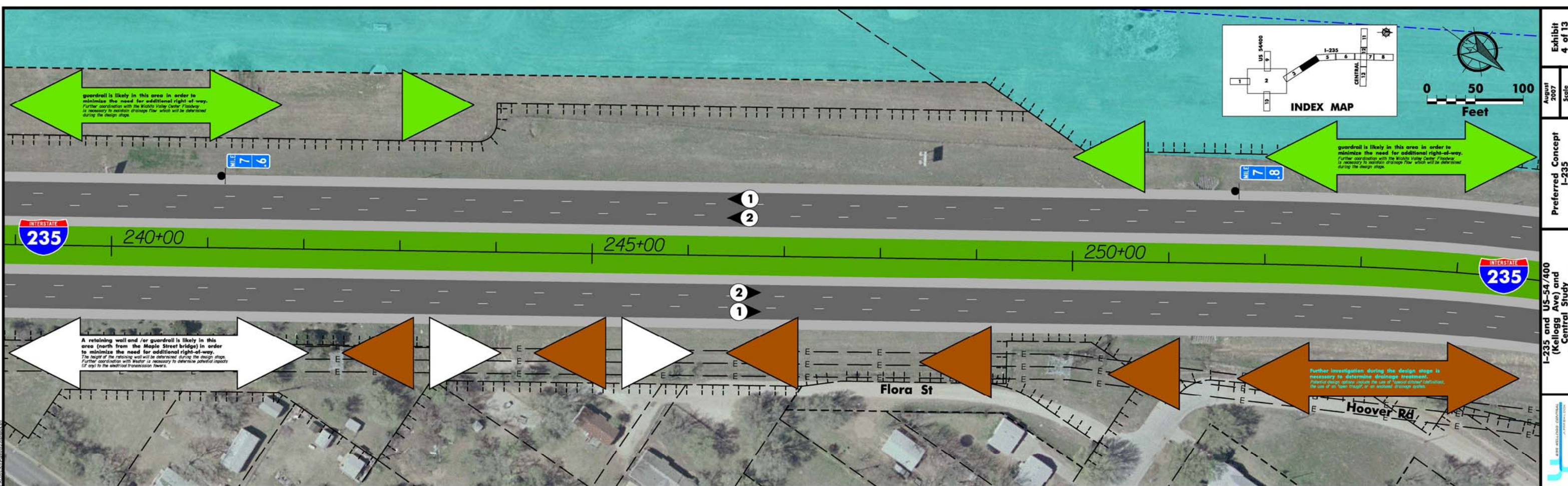
g:\K005\0301\Planning\235smp\02_sht



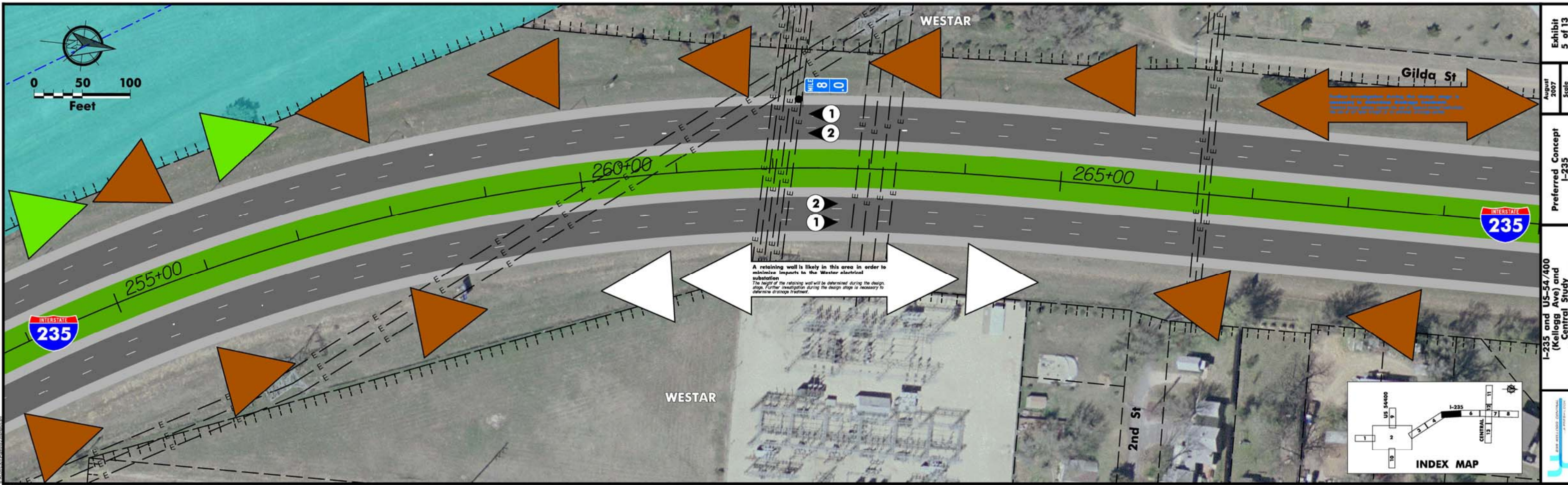
	I-235 and US-54/400 (Kellogg Ave) and Central Study Sedgewick County, Kansas	
	Preferred Concept I-235 / US-54/400 (Kellogg Ave.) Interchange	August 2007
	Scale 1" = 100'	



August 2007
Scale 1" = 50'
Exhibit 3 of 13
Preferred Concept I-235
I-235 and US-54/400 (Kellogg Ave) and Central Study
Sedgewick County, Kansas



August 2007
Scale 1" = 50'
Exhibit 4 of 13
Preferred Concept I-235
I-235 and US-54/400 (Kellogg Ave) and Central Study
Sedgewick County, Kansas

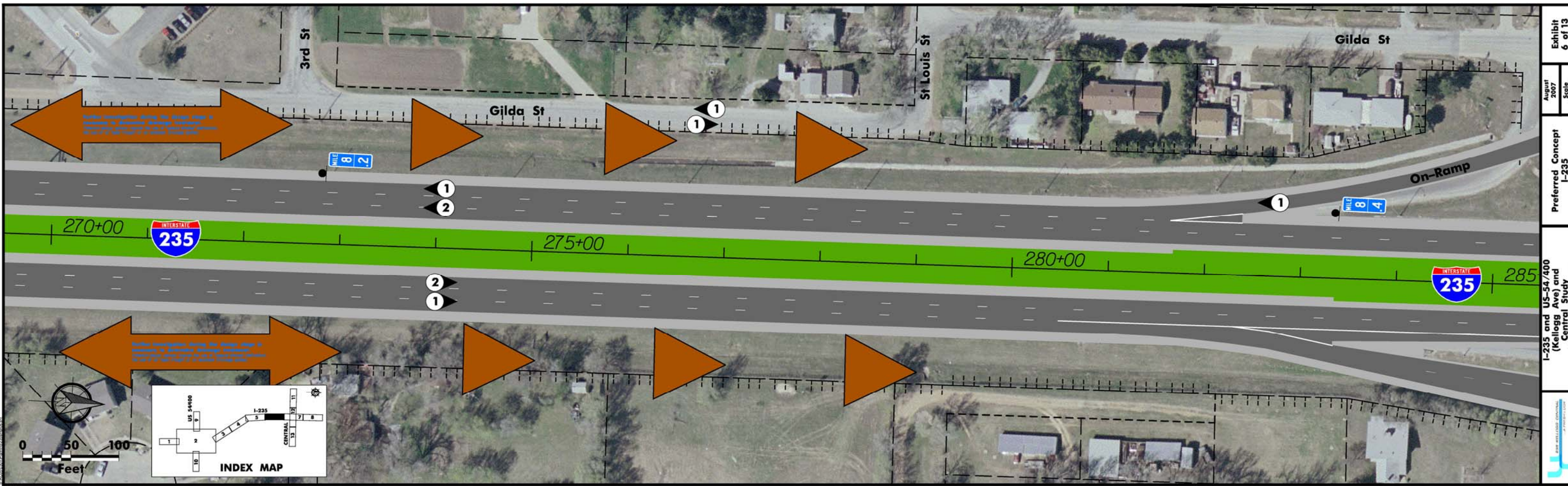


August 2007
Scale 1" = 50'

Preferred Concept
I-235

I-235 and US-54/400 (Kellogg Ave) and Central Study
Sedgwick County, Kansas

Exhibit 5 of 13

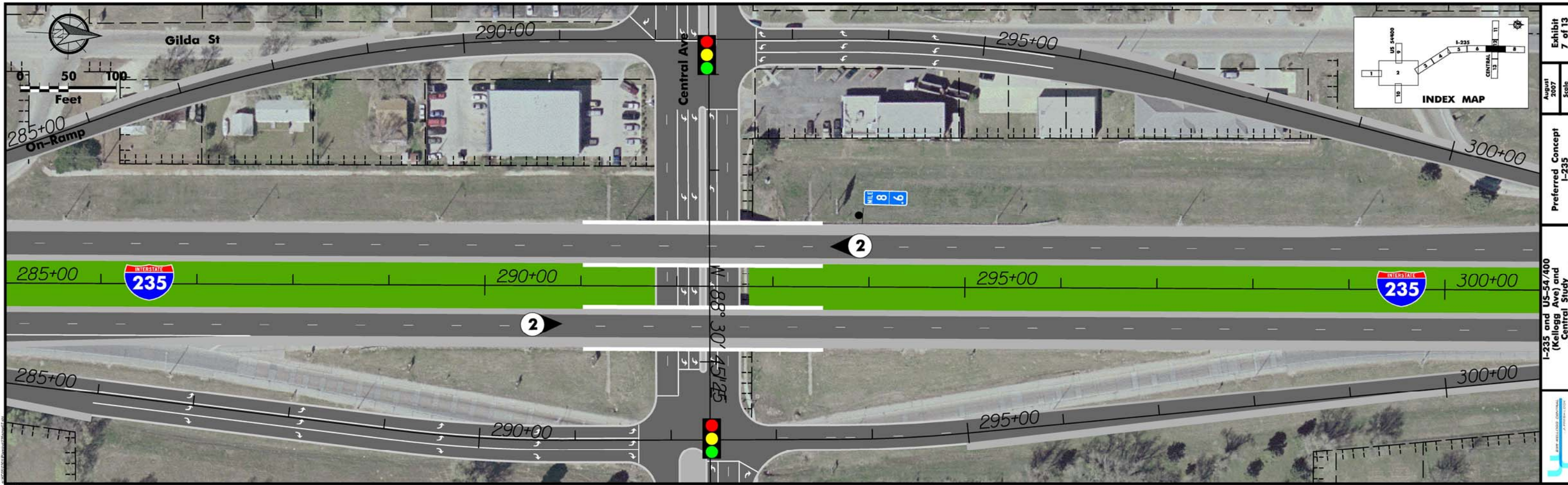


August 2007
Scale 1" = 50'

Preferred Concept
I-235

I-235 and US-54/400 (Kellogg Ave) and Central Study
Sedgwick County, Kansas

Exhibit 6 of 13



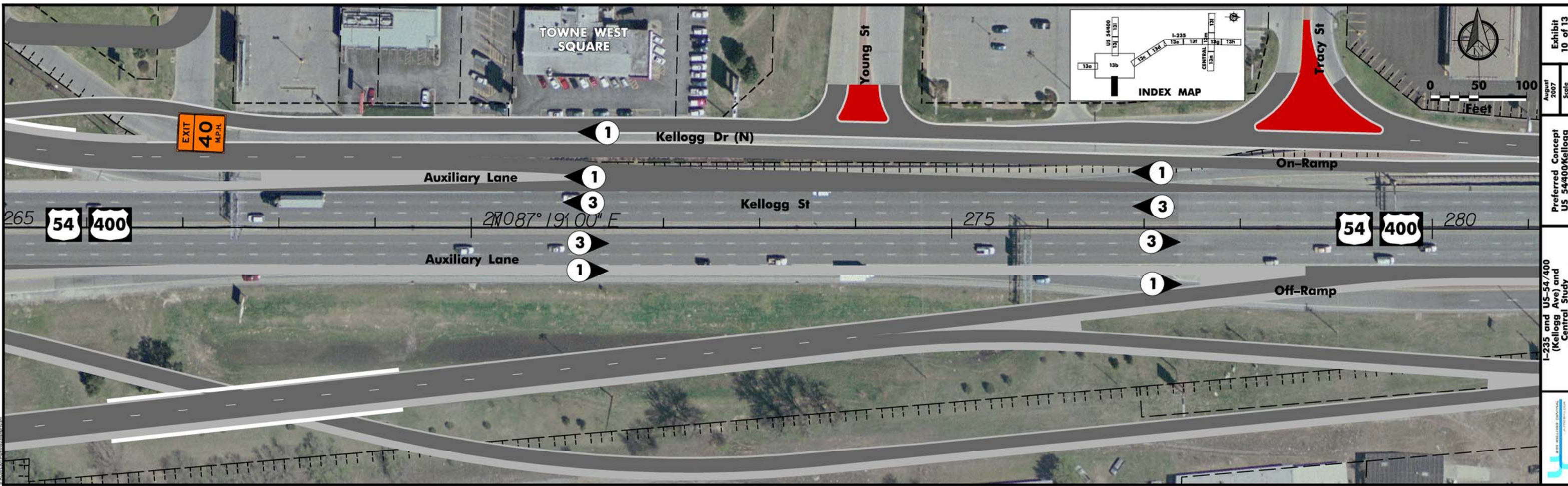
August 2007
 Scale 1" = 50'
 Preferred Concept I-235
 I-235 and US-54/400 (Kellogg Ave) and Central Study
 Sedgewick County, Kansas



August 2007
 Scale 1" = 50'
 Preferred Concept I-235
 I-235 and US-54/400 (Kellogg Ave) and Central Study
 Sedgewick County, Kansas



August 2007
 Scale 1" = 50'
 Preferred Concept US 54/400/Kellogg
 I-235 and US-54/400 (Kellogg Ave) and Central Study Sedgwick County, Kansas
 Exhibit 9 of 13



August 2007
 Scale 1" = 50'
 Preferred Concept US 54/400/Kellogg
 I-235 and US-54/400 (Kellogg Ave) and Central Study Sedgwick County, Kansas
 Exhibit 10 of 13



Exhibit 11 of 13
 August 2007
 Scale 1" = 50'
 Preferred Concept
 Central Avenue
 I-235 and US-54/400
 (Kellogg Ave) and
 Central Study
 Sedgewick County, Kansas

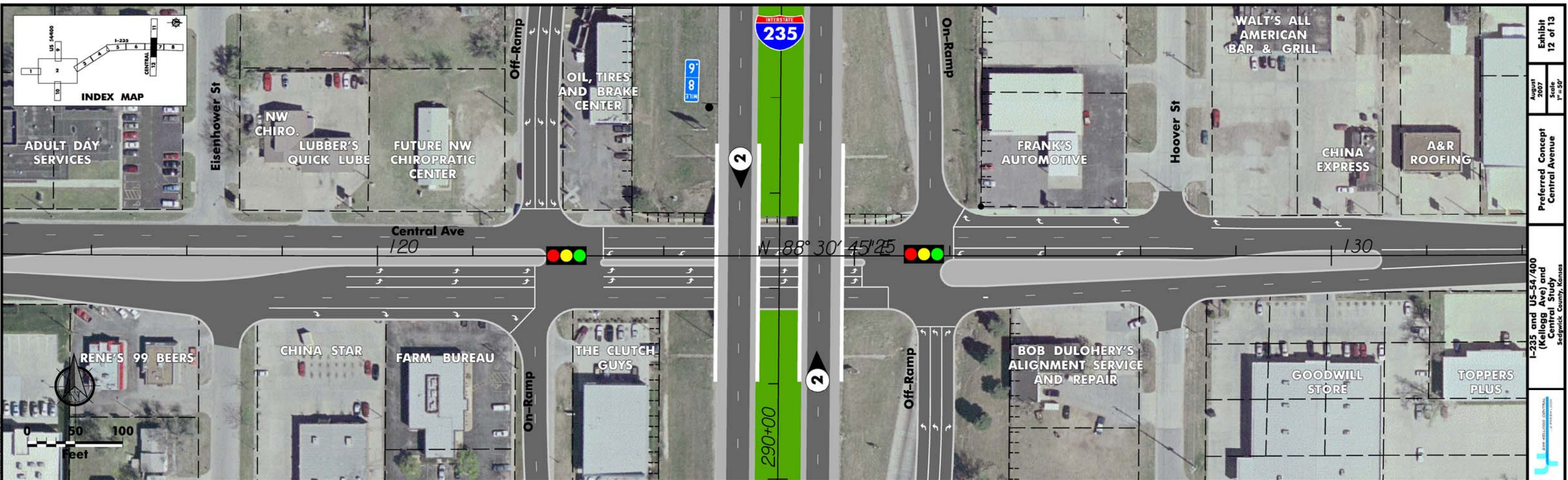
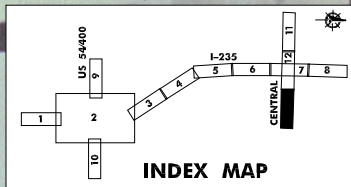


Exhibit 12 of 13
 August 2007
 Scale 1" = 50'
 Preferred Concept
 Central Avenue
 I-235 and US-54/400
 (Kellogg Ave) and
 Central Study
 Sedgewick County, Kansas



WICHITA MUGGER

FURNITURE FACTOR OUTLET

CITY OF WICHITA POLICE DEPARTMENT SUBSTATION WEST

CHERRY ORCHARD FURNITURE

WICHITA DOG & CAT HOSPITAL

Flora St

Elder St

Doris St

Clara St

Central Ave

135

N 88° 09' 47" E

140

2

2

