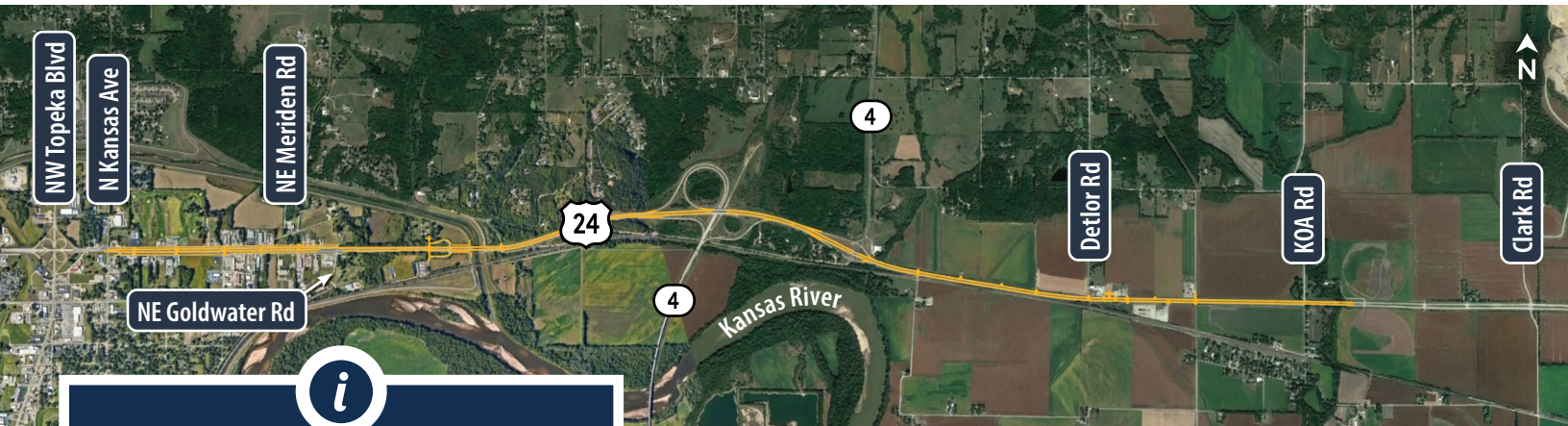


U.S. 24 Improvements Kansas Avenue to Muddy Creek

Shawnee and Jefferson counties



U.S. 24 Pavement Replacement with Added Benefits

The Kansas Department of Transportation (KDOT) is moving forward on the U.S. 24 pavement replacement project, with added safety, access, and anticipated economic development benefits.

The overall project area is 5.5 miles along U.S. 24, beginning just west of N. Kansas Avenue and continuing east to Muddy Creek in Jefferson County.

Major urban intersections in the project:

- U.S. 24 and N. Kansas Avenue (signalized intersection)
- U.S. 24 and N.E. Meriden Road (two offset intersections)
- U.S. 24 and N.E. Goldwater Road

Planned improvements are in alignment with the City of Topeka Comprehensive Plan 2040. This section along U.S. 24 is expected to remain primarily as commercial and industrial land uses.

Project Benefits

Project Update | November 2024

Anticipated Safety Benefits

The existing crash records and traffic safety study completed in December 2018 found the overall crash rate along the Shawnee County portion of U.S. 24 was 6% higher than statewide comparisons. The fatal crash rate in this area was 150% higher. About three-fourths of crashes were vehicle-to-vehicle crashes and about half of those were side impact (or T-bone) crashes.



- **Planned Safety Improvements** – Access management improvements are expected to **reduce conflict points along U.S. 24 by approximately 70%**, which should result in reduced crash frequency and severity.
- **Streamlined Access** – A series of median treatments have been designed to continue to allow access to the businesses along U.S. 24 while maintaining traffic flow.
- **Economic Development Opportunities** – In addition to important safety benefits, planned frontage road improvements could encourage additional investments into this important corridor. Currently there are several parcels that could be developed for commercial, industrial, or residential uses.

Next Steps



Construction began in July 2023 and is expected to last four construction seasons.

Project Contacts:

Kate Craft
Public Information Officer

 Kate.Craft@ks.gov
 785-817-9366

Steve Baalman, P.E.
Topeka Metro Engineer

 Steve.Baalman@ks.gov
 785-296-2291



For more information, please visit
ike.ksdot.gov/us-24-shawnee-county.

This information can be made available in alternative accessible formats by contacting 785.296.3585 Voice/Hearing Impaired-711.



U.S. 24 Improvements Kansas Avenue to Muddy Creek

Shawnee and Jefferson counties



Project Timeline

Construction began in July 2023 and is expected to last four construction seasons.

2023-2024 CONSTRUCTION PHASE 1: Frontage roads along U.S. 24

- Reconstruct existing adjacent frontage roads
- Maintain two lanes on U.S. 24 each direction



2024 CONSTRUCTION PHASE 2: U.S. 24 from west of Kansas Avenue to Goldwater Road

- Utilizes frontage roads as the shoo-fly detour during construction of U.S. 24
- Frontage road detours will be split with westbound traffic using the north frontage road, and eastbound traffic using the south frontage road
- Kansas Avenue traffic will be detoured during this season



2025 CONSTRUCTION PHASE 3 & 4: Eastbound U.S. 24 construction from Goldwater Road to Muddy Creek

- Kaw Road south of U.S. 24 will be detoured during this season
- Select U.S. 24 and K-4 ramps will be closed and detoured during this season



2026 CONSTRUCTION PHASE 5: Westbound U.S. 24 construction from Goldwater Road to Muddy Creek

- Select U.S. 24 and K-4 ramps will be closed and detoured during this season

